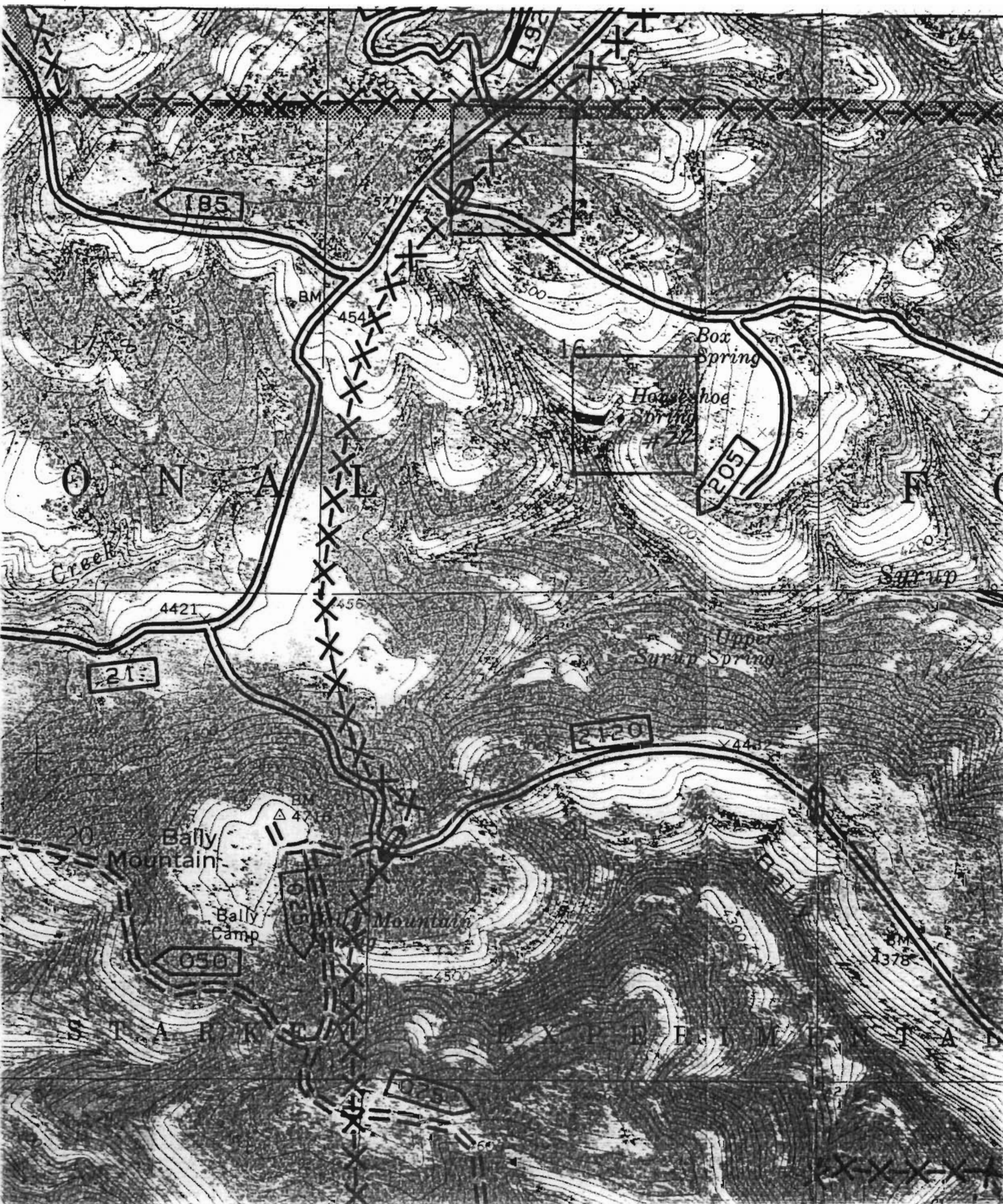


CERTIFICATE NO. 71511

Unnamed Pond #24
3S 34E 16 NE NW R-79605



185

195

205

215

2120

050

050

Box Spring

Househoe Spring #24

Upper Spring

Bally Mountain

Bally Camp

Mountain

Oona Creek

S T A R K E T P E E M T A D

BM

454

500

4421

456

4

5

4200

420

450

460

441

BM 1375

4500

4300

60

2

Bally Camp

Mountain

"K" pond #20
3S 34 E 33 SE NW
P. 79605
4378

S T A R K L A N D T A D

050

025

71541

Meadow

Creek

2105

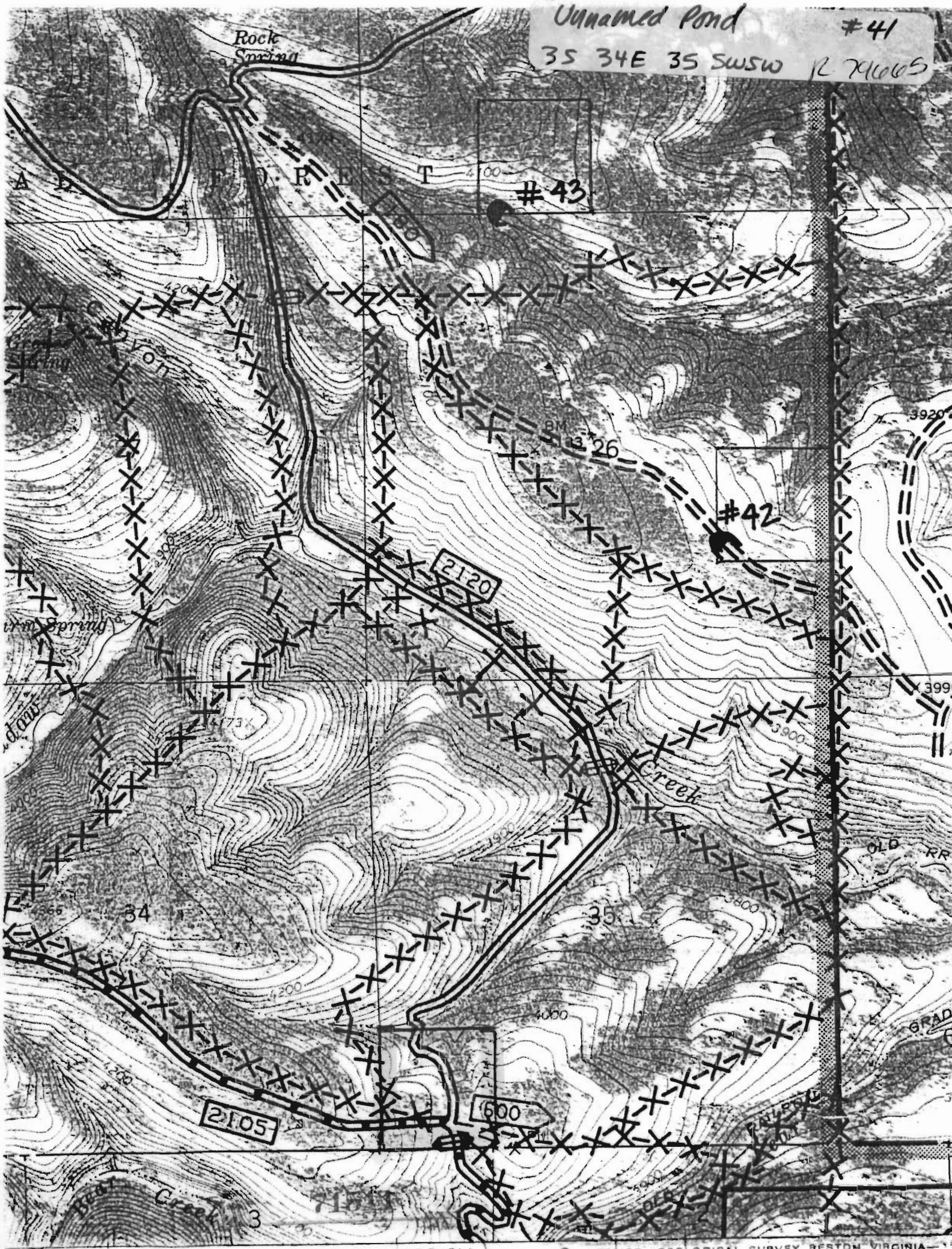
32

5

4



Unnamed Pond #41
35 34E 35 SWSW R 71005



Rock Spring

#43

#42

2120

2105

600

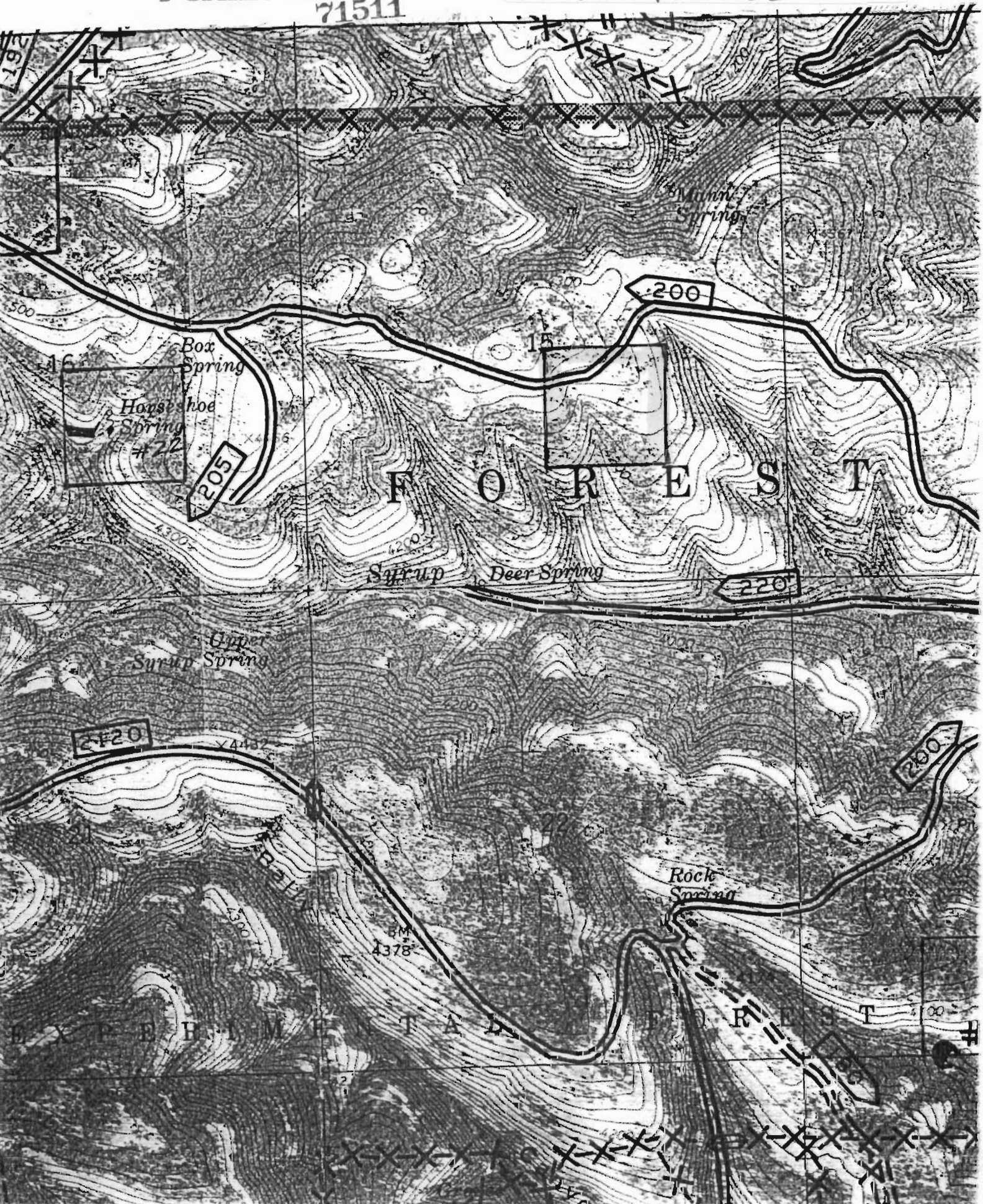
34

35

Creek

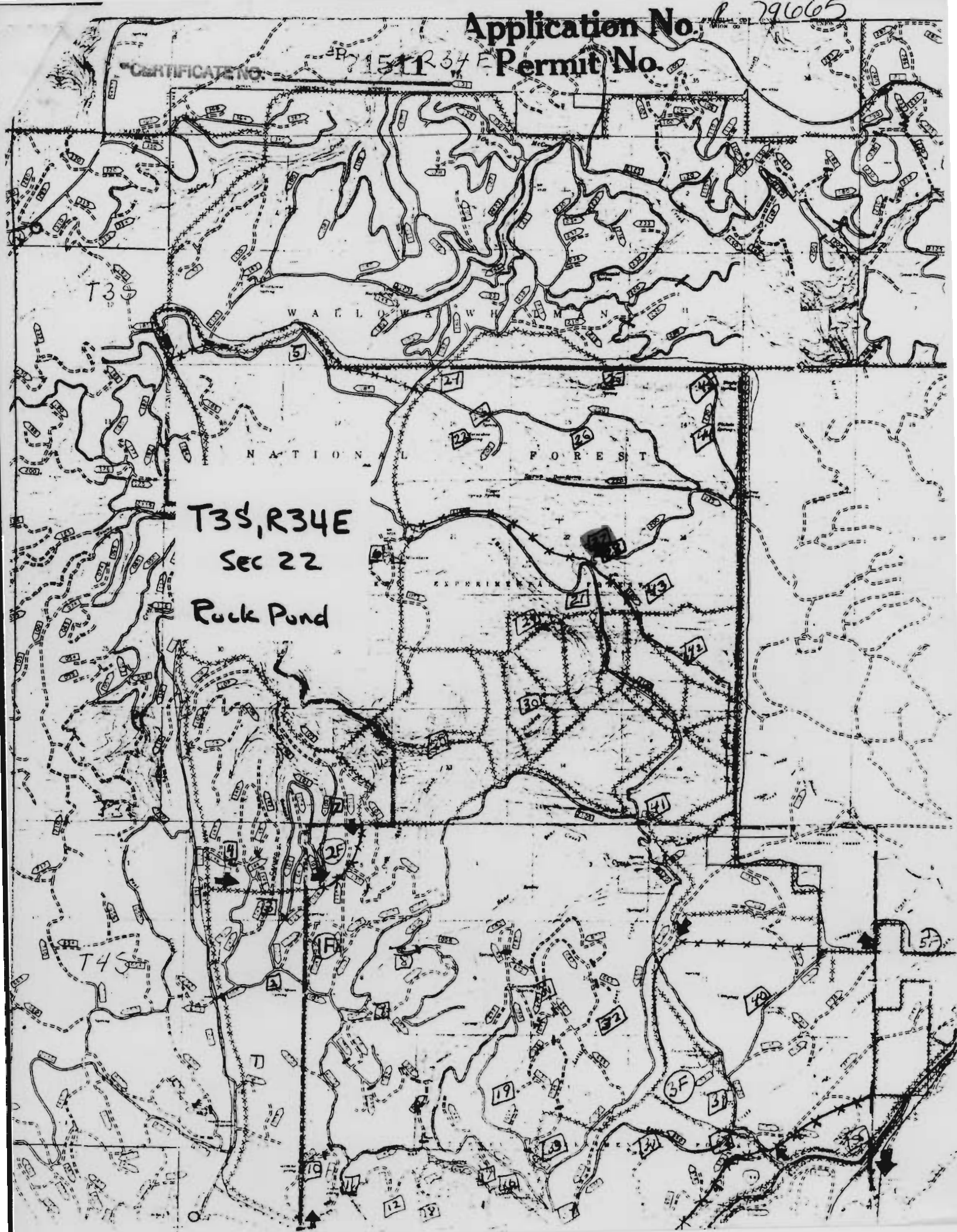
3

Application No. R. 79665 Unnamed Pond #26
Permit No. 71511 35 34 E 15 NWSE



Application No. 79665
Permit No. 1511 R 34 E

CERTIFICATE NO.



T3S, R34E
Sec 22
Rock Pond

T3S

T4S

NATIONAL FOREST

EXPERIMENTAL

W A T L O W A W H M A N H

CERTIFICATE NO. 71511

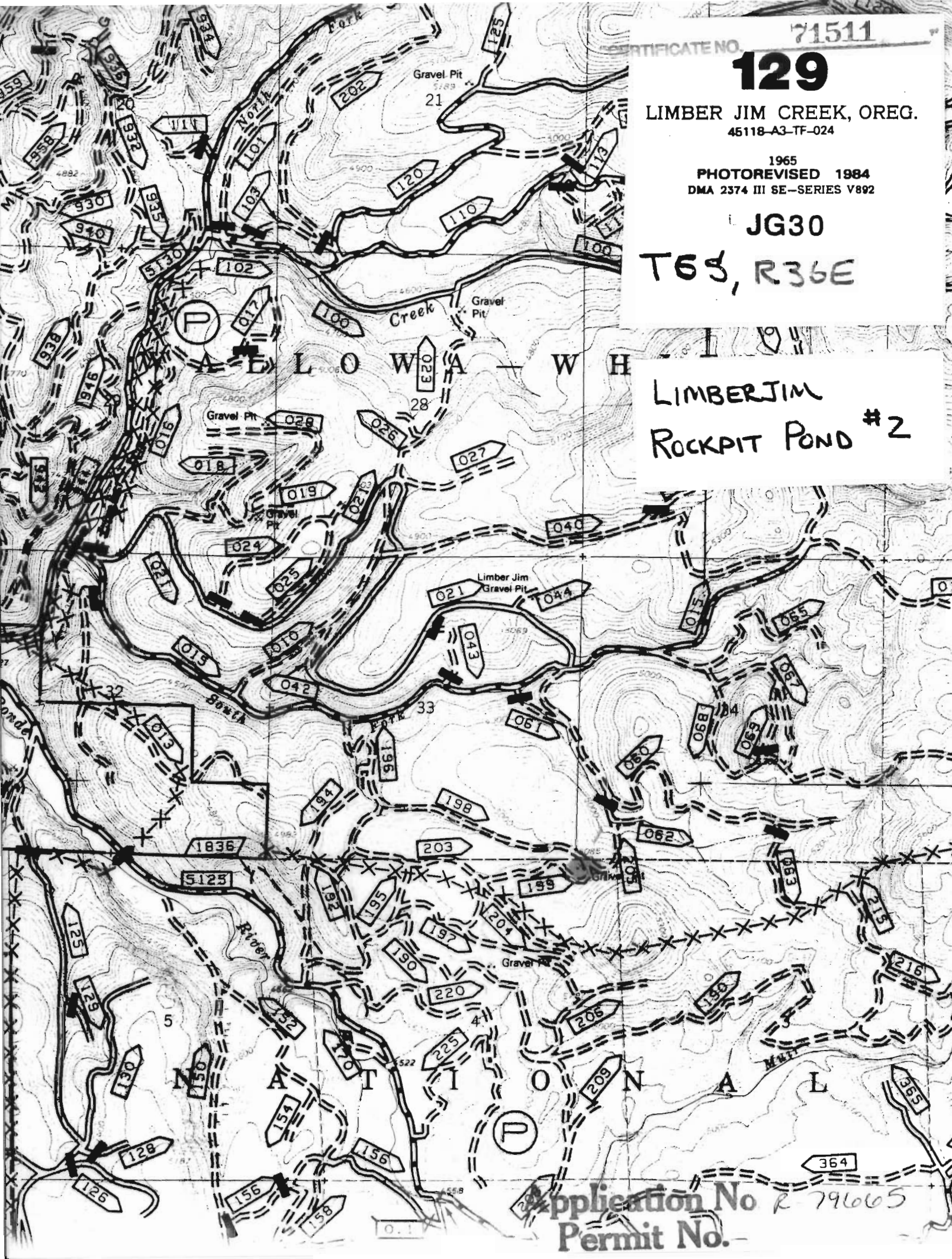
129

LIMBER JIM CREEK, OREG.
45118-A3-TF-024

1965
PHOTOREVISED 1984
DMA 2374 III SE-SERIES V892

JG30
T6S, R36E

LIMBERJIM
ROCKPIT POND #2



Application No R 79665
Permit No.