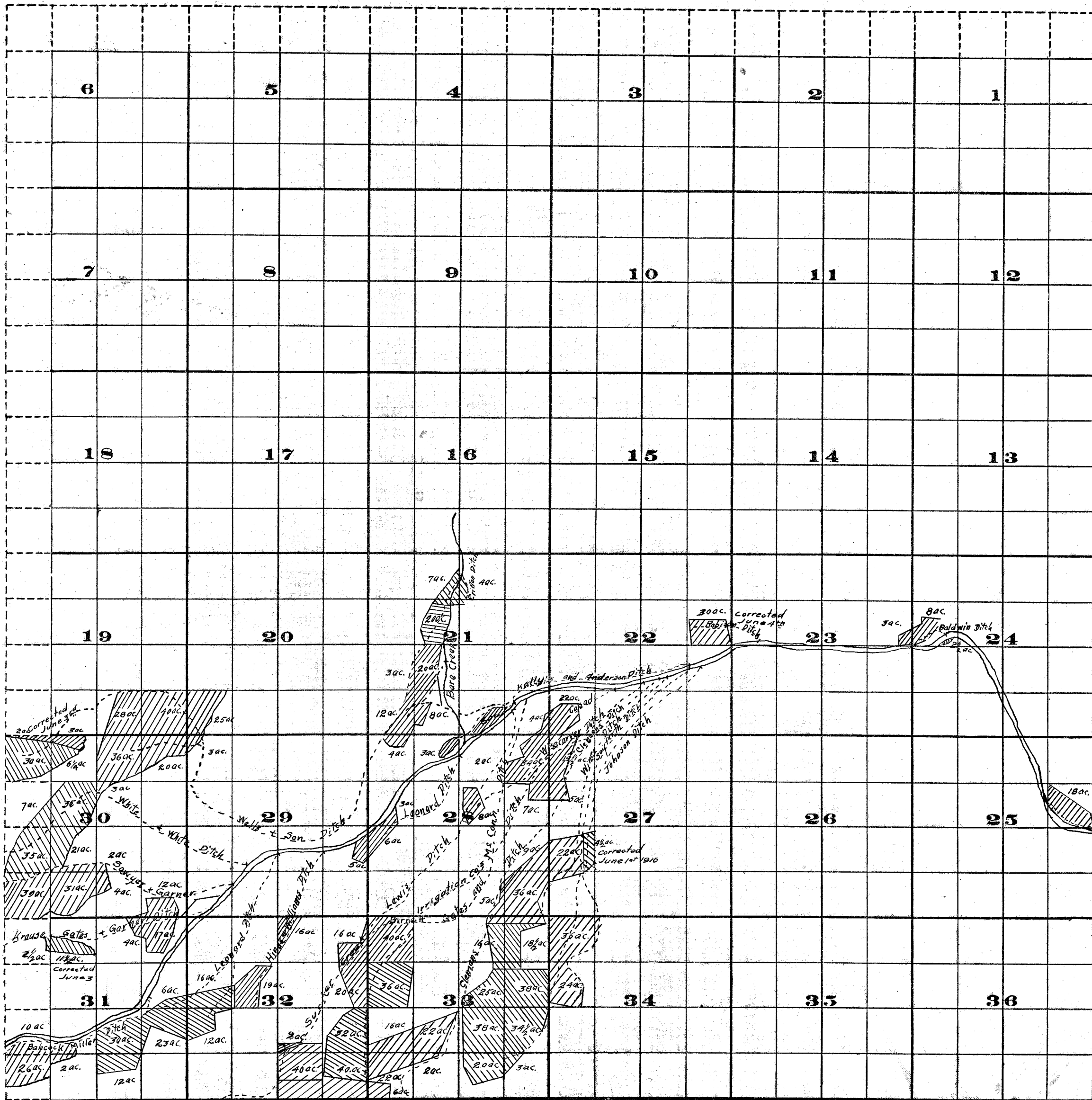


Township 39.5, Range 7 W. W. M.



FROM OFFICE OF THE STATE ENGINEER, SALEM, OREGON

Scale of Feet.

Survey by J.S. Mc Mahon,
 March 1910.
 J. H. Lewis, State Engineer.

Sucker Creek Adjudication

Examined June 15th 1910.

18+0 20