

A & T FILMED 3/23/93

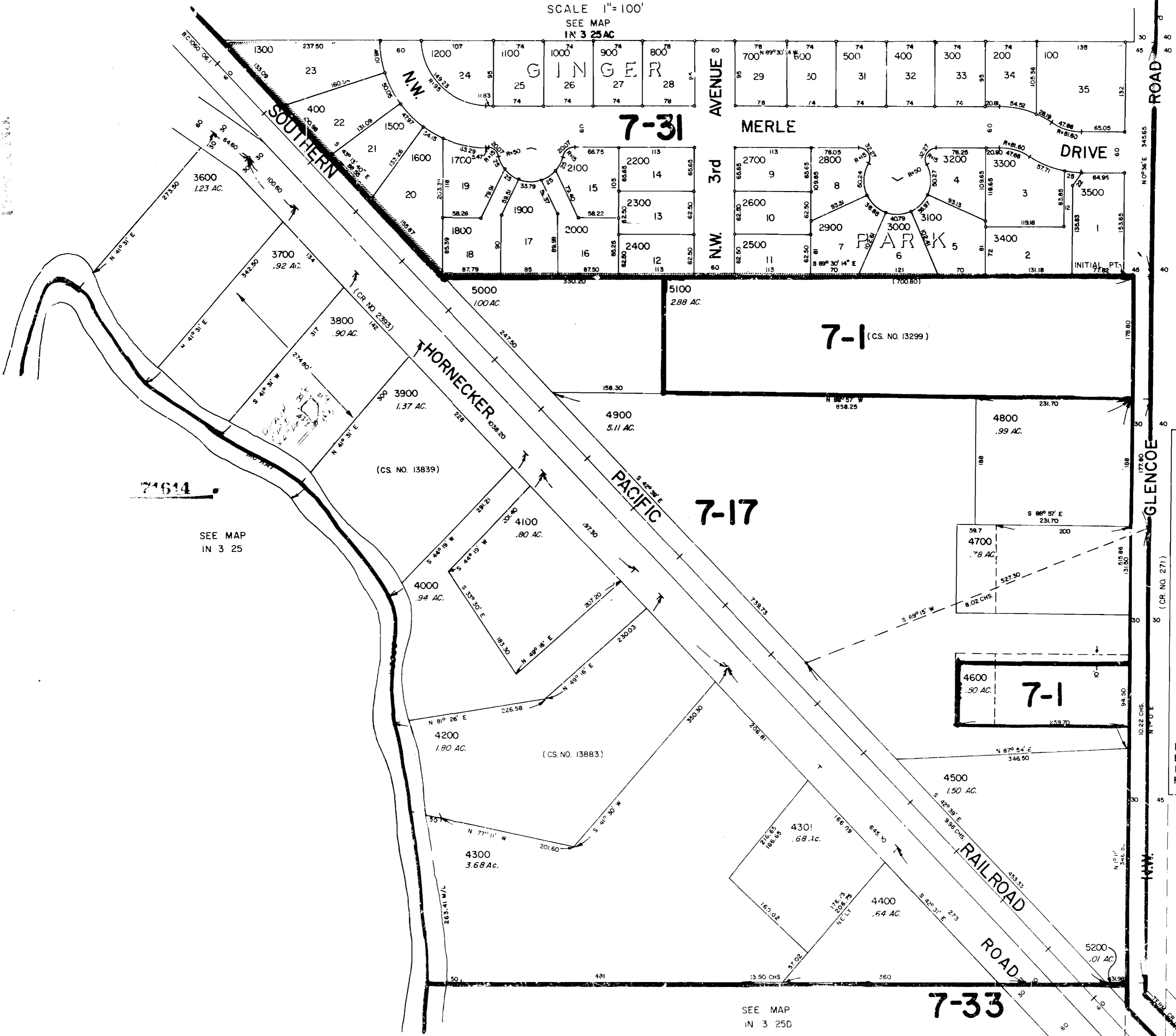
NW 1/4 SE 1/4 SECTION 25 T1N R3W W.M.

WASHINGTON COUNTY OREGON

IN 3 25DB HILLSBORO

SCALE 1"=100'

SEE MAP IN 3 25AC



71614

SEE MAP IN 3 25

(CS. NO. 13883)

7-17

7-1 (CS. NO. 13299)

7-1

7-33

SEE MAP IN 3 25D

SEE MAP IN 3 25DA

FOR ASSESSMENT PURPOSES ONLY. DO NOT RELY ON FOR ANY OTHER USE.

N.E. SHANNON STREET

HILLSBORO IN 3 25DB

R. Kauffman 4/5/80