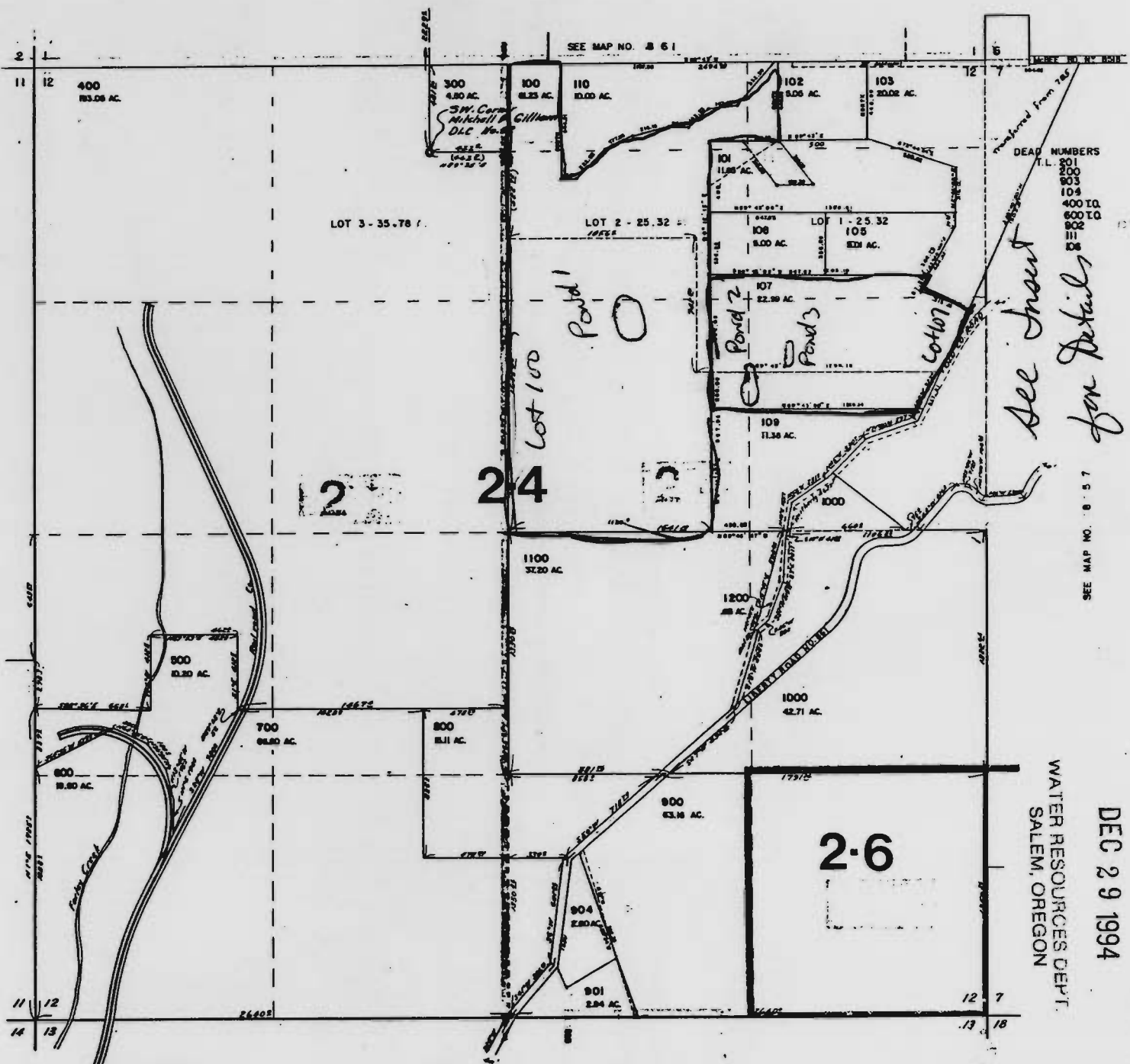


8412

CERTIFICATE NO.

71634

SEE MAP NO. 11 9 8 1 SEE



DEAD NUMBERS

T.L.	201
	200
	903
	104
	400 TO
	600 TO
	800 TO
	900 TO

*See front for details*

SW #6

Application No. R-79863  
Permit No.

RECEIVED

DEC 29 1994

WATER RESOURCES DEPT.  
SALEM, OREGON