

RECEIVED

DEC 29 1994

WATER RESOURCES DEPT.
SALEM, OREGON

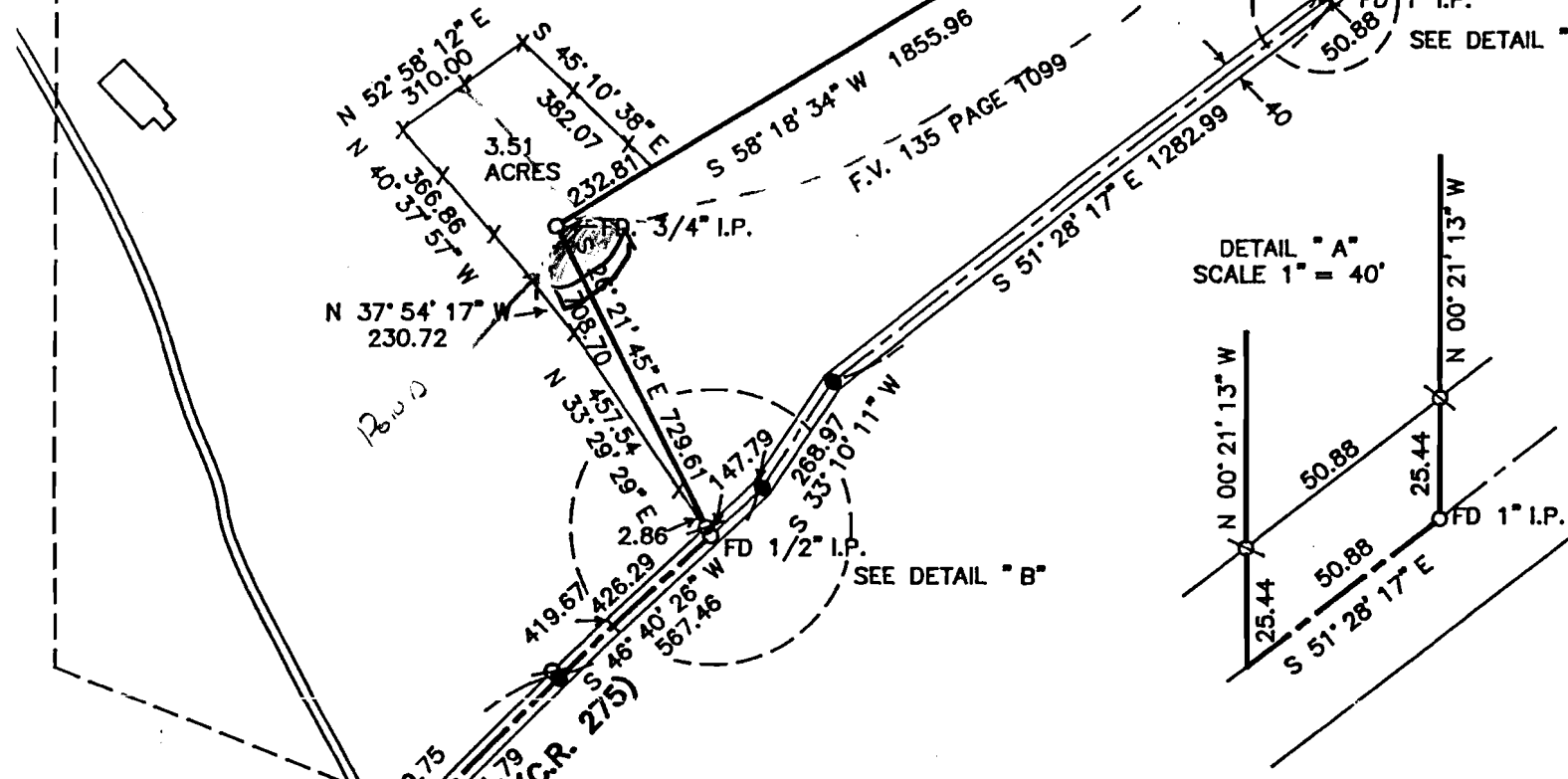
RECEIVED

JAN 29 1996

WATER RESOURCES DEPT.
SALEM, OREGON
BRASS CAP AT THE
N 1/4 CORNER OF
SECTION 36.

1157
25
36

TAX LOT 500 MAP 2 4-36



IRRIGATED AREA APPROX 12 ACRES

REGISTERED
PROFESSIONAL
LAND SURVEYOR

OREGON
JULY 13, 1879
JOHN M. PETERSON
1856



DEVELOPMENT &
CONSTRUCTION
SERVICES

434 S. FIRST AVE., SUITE 400
HILLSBORO, OREGON 97123

(503) 648-4959

JOB # 9101015

71638