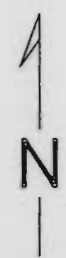
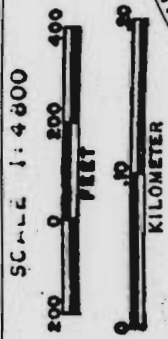
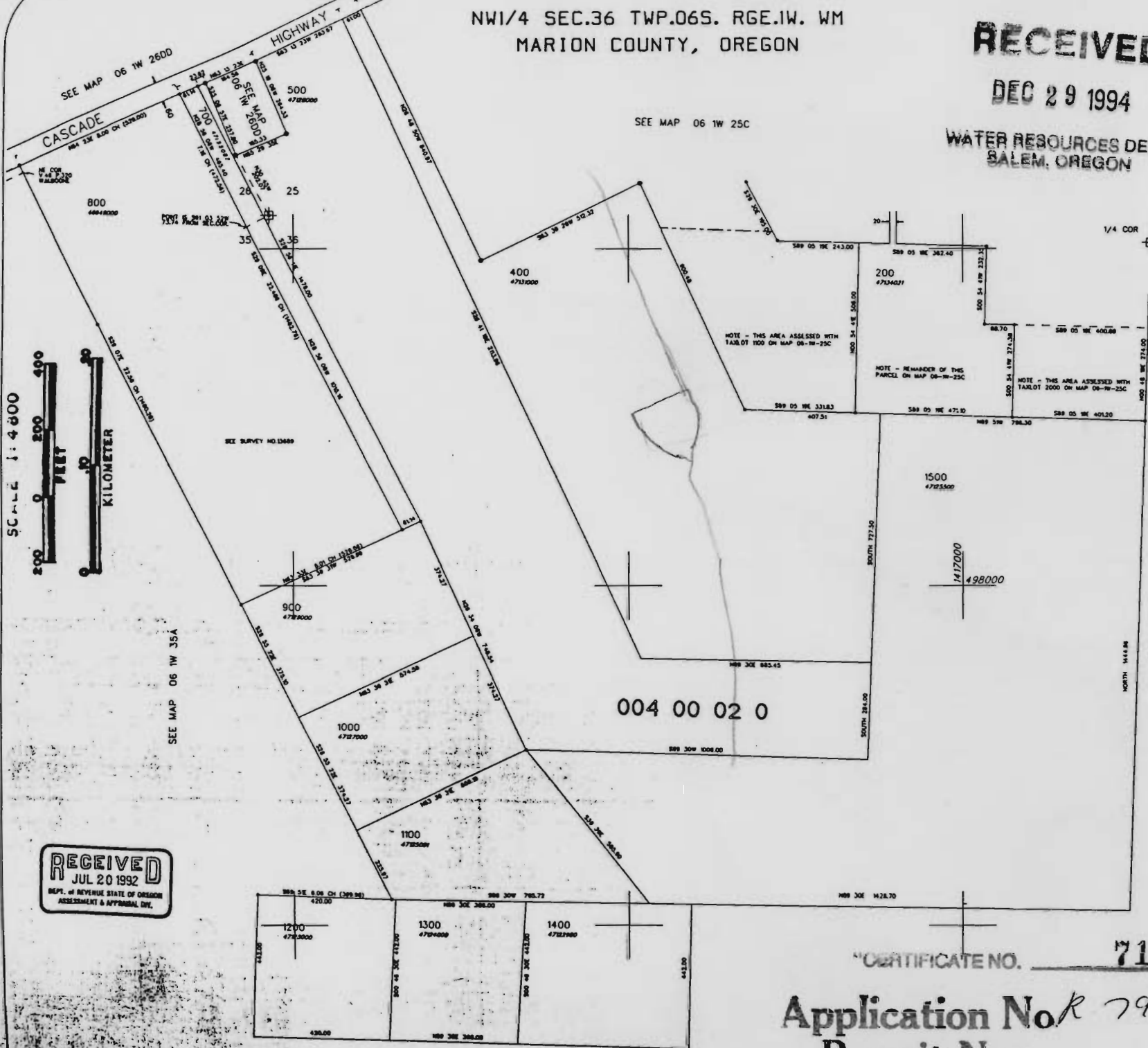


NW1/4 SEC.36 TWP.06S. RGE.1W. WM  
MARION COUNTY, OREGON

RECEIVED

DEC 29 1994

WATER RESOURCES DEPT.  
SALEM, OREGON



1"=200'  
29-JUN-92

SEE MAP 06 1W 35A

SEE MAP 06 1W 36A

RECEIVED  
JUL 20 1992  
DEPT. OF REVENUE STATE OF OREGON  
ASSESSMENT & APPRAISAL DIV.

"CERTIFICATE NO. 71639"

Application No. *R 79868*  
Permit No.