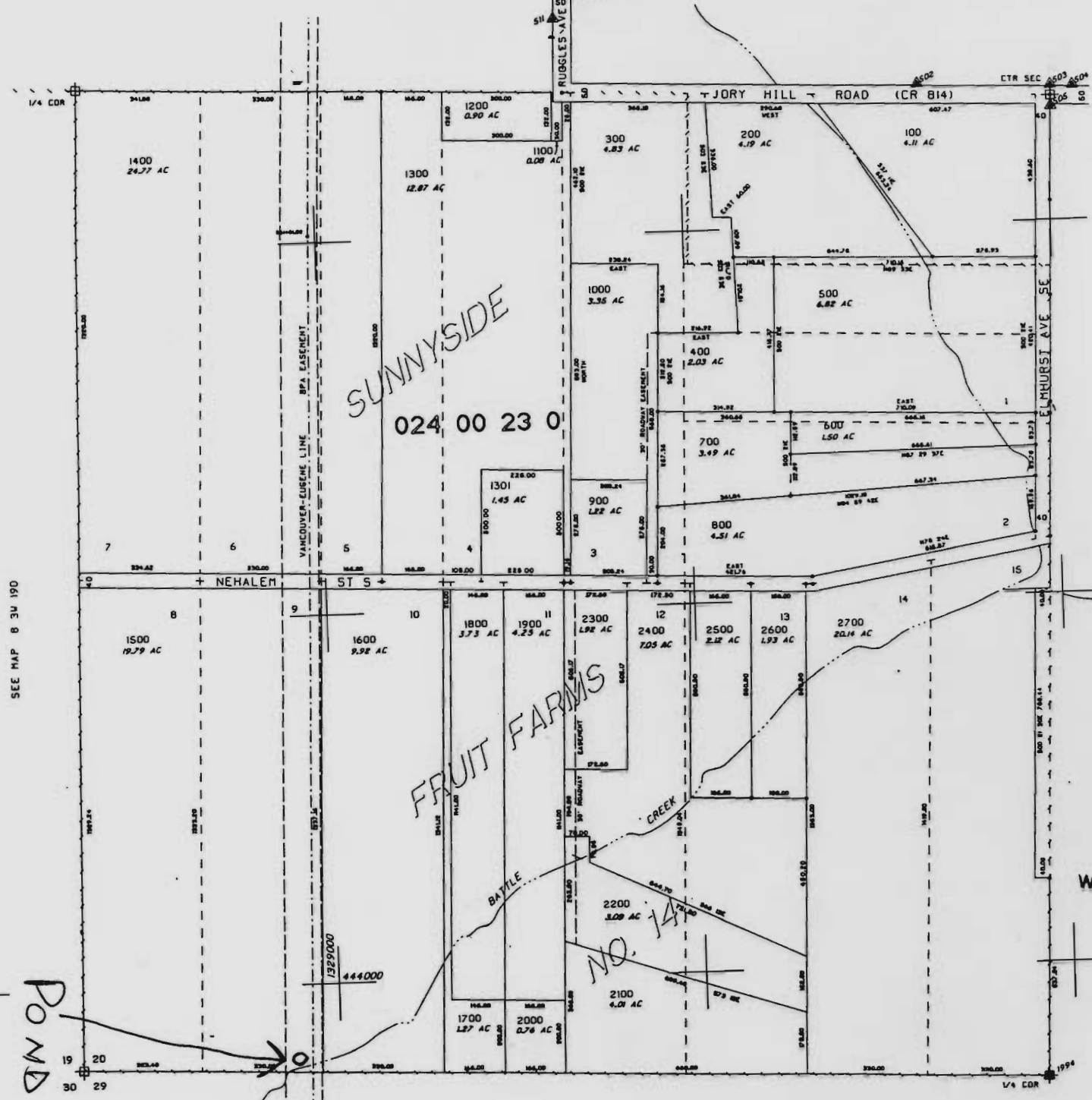
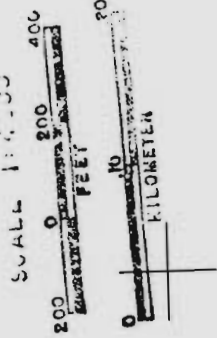


SW1/4 SEC 20 T.03. N.3W. W.1
 MARION COUNTY, OREGON
 SEE MAP 8 34 208



SEE MAP 8 34 200
 1"=200'
 10-NOV-81
 CERTIFICATE NO. 71845

RECEIVED
 DEC 29 1994
 WATER RESOURCES DEPT.
 SALEM, OREGON

Application No R 79875
 Permit No.