

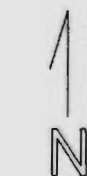
8 2w 18

RECEIVED

DEC 29 1994

WATER RESOURCES DEPT.  
SALEM, OREGON

NOTE: ADDED WITH TABLET ON  
OR MAP 8 2w 18



1"=400'  
22-JAN-82

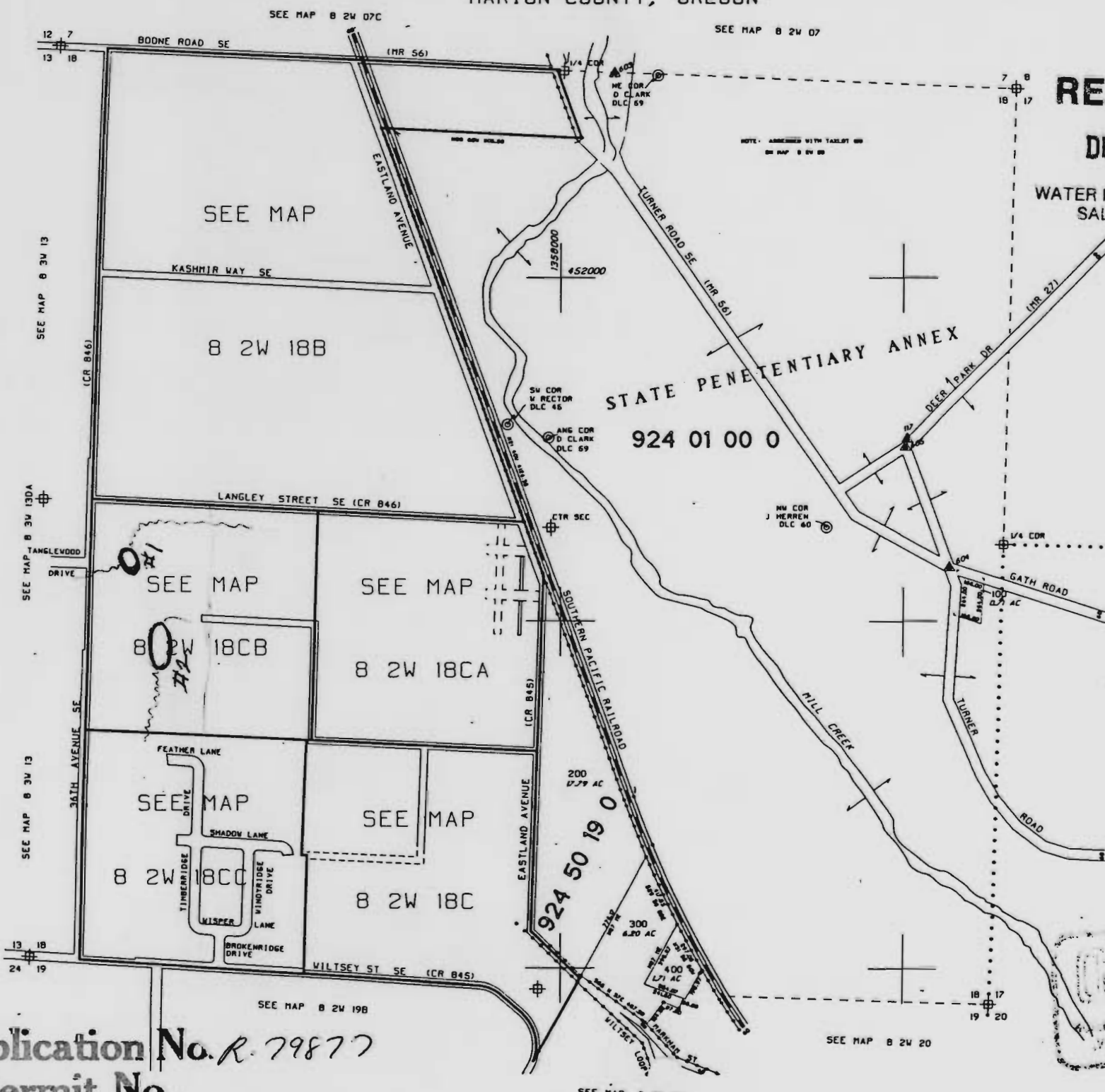
SEE MAP 8 2w 17

300



71647

400  
300  
200  
100  
0  
KILOMETER



SEE MAP 8 2w 07c

SEE MAP 8 2w 07

12 7  
13 18

7 8  
18 17

BOONE ROAD SE

(MR 56)

ME COR  
D CLARK  
DLC 59

SEE MAP

KASHMIR WAY SE

8 2w 18B

STATE PENITENTIARY ANNEX

924 01 00 0

SW COR  
V RECTOR  
DLC 45

ANG COR  
D CLARK  
DLC 59

NW COR  
J HERREN  
DLC 60

1/4 COR

GATH ROAD

SEE MAP 8 3w 13

SEE MAP 8 3w 13DA

SEE MAP 8 3w 13

13 18  
24 19

SEE MAP 8 2w 19B

SEE MAP 8 2w 20

SEE MAP 8 2w 19A

Application No. R. 79877  
Permit No.