

H 13-1

Application No. R-80013
Permit No.

71702

F 66
RECEIVED

DEC 30 1994

WATER RESOURCES DEPT
SALEM, OREGON

10⁰
15³
F78

Oats 20⁷
Pond 15.0
1400
Oats, wheat
& barley
mix

19⁶
20⁵
Barley 15.0
F67
cut 2.0
198
grass
hay 5.0

Grass
Hay 6³

11²

Hay
10²
7. Corn

Pasture

13⁰ 13⁰
F68 F116

F160

1975

19025

71702

CATE NO.

1
10.4

HEL/NW

HEL/NW

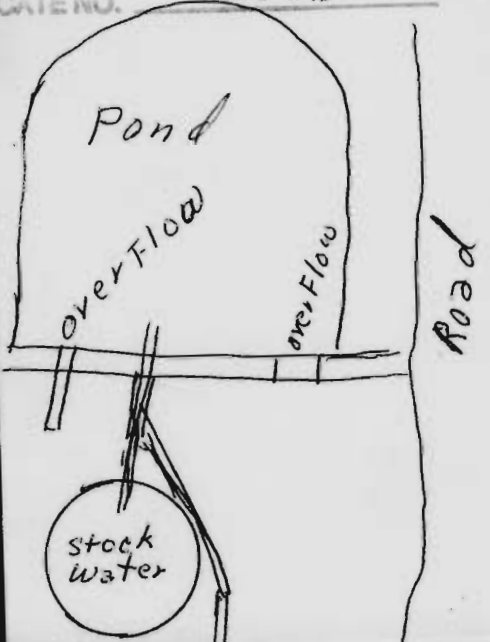
NHEL

FEB - 1 1996

WATER 15.1
OREGON

2
14.0

Stock water tank No 5007



NHEL/PC

4 1/2 acres ALFALFA

NHEL

NHEL/PC

3
19.7

NHEL
4
6.6

Irrigation Pipe Line

2
15.3

3
20.2

4
19.1

4 1/2 acre alfalfa

NHEL/PC

NHEL

5
14.0

5
22.5

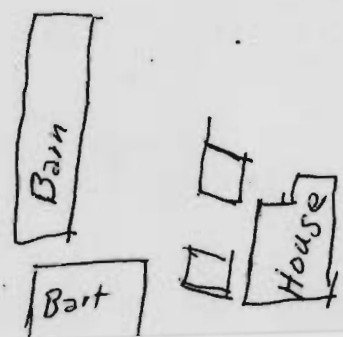
Rail Road tracks

Received
Dec 30 1994
Water Resources Dep.
Salem Ore

See Map H 13

RECEIVED

Application NO R9003



3