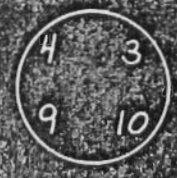


JAN 3 1995

WATER RESOURCES DEPT
SALEM, OREGON

See
map
K8L

T2140



T2404

T2405

T2408

T2012

See
map
K8L

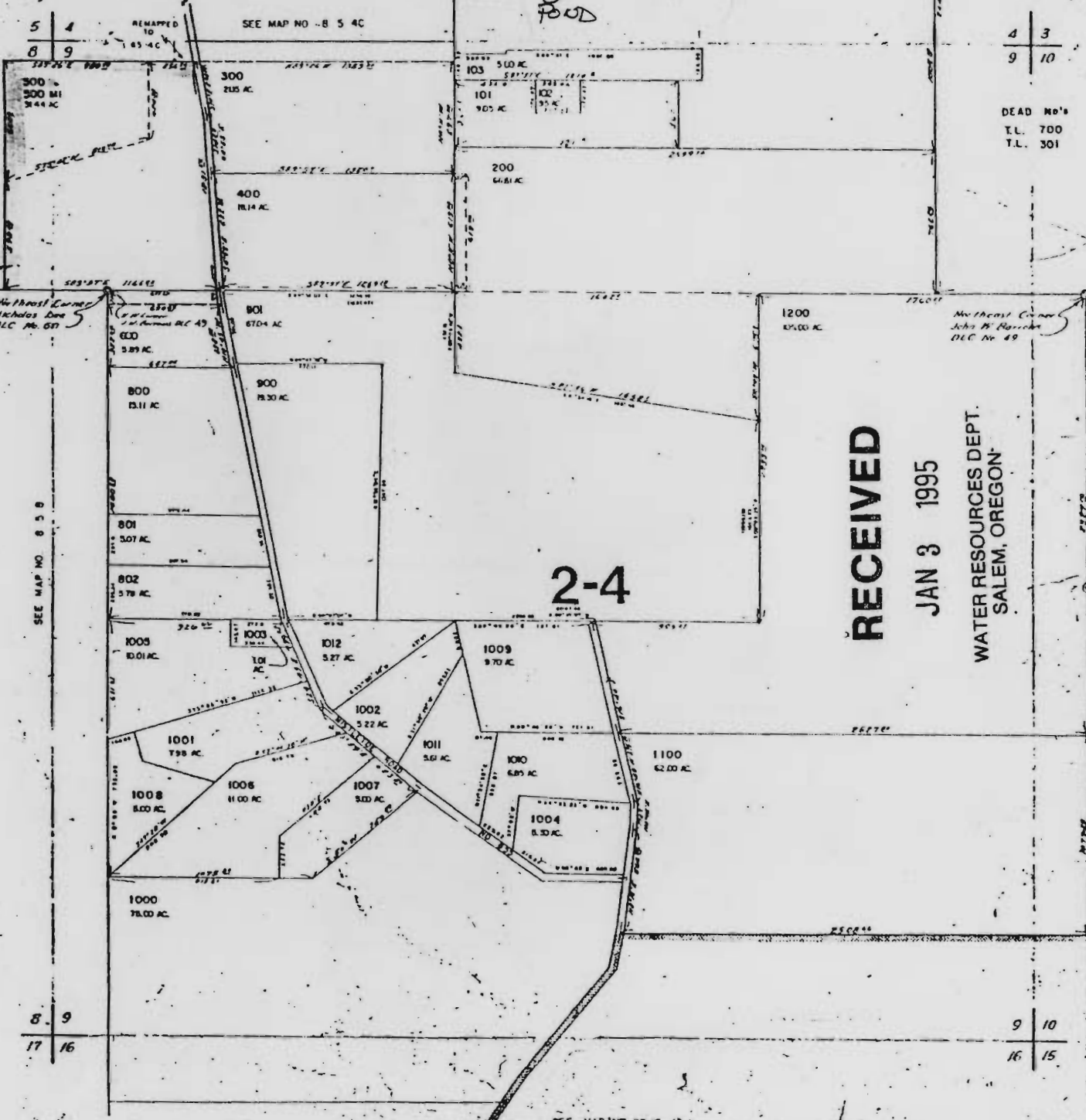
T2392

NOT TO SCALE

WHEATSTONE
ROAD

SCALE 1"=400'

POD



4	3
9	10

DEAD No's
T.L. 700
T.L. 301

RECEIVED
JAN 3 1995
WATER RESOURCES DEPT.
SALEM, OREGON

Application No. R-8881
Permit No.

CERTIFICATE NO. 71709

Southwest Corner
Primeria F. Hader
DLC No. 48

Northwest Corner
Nicholas Doe
DLC No. 67

Northwest Corner
John B. Harrison
DLC No. 49

SE Corner
Chas. No. 69

SW Corner
Henry H. Hader
DLC No. 68

