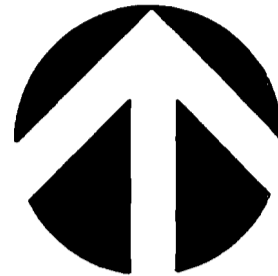


CHATNICKA HEIGHTS No 7

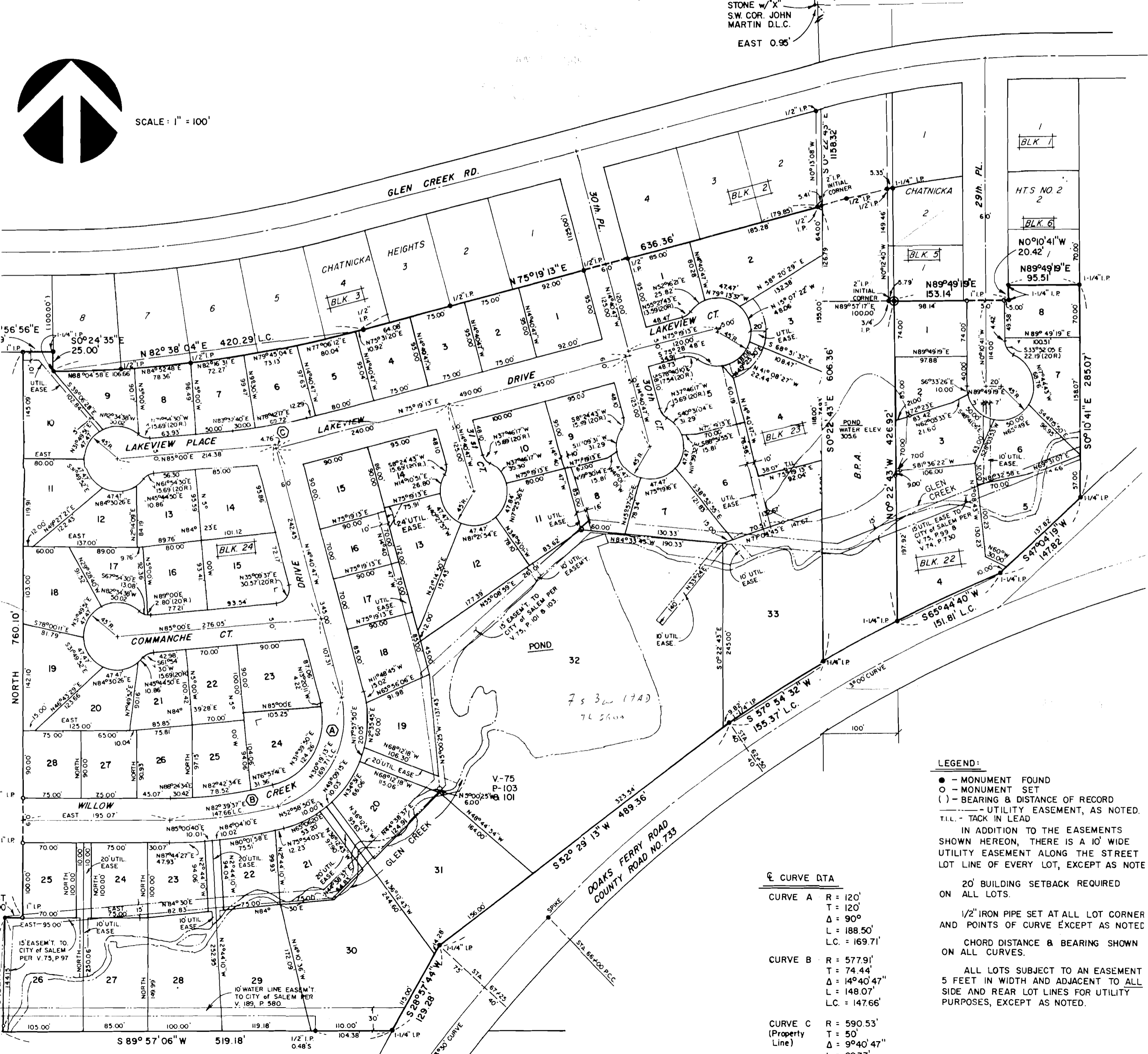
71710

IN N.E. 1/4, SECTION 19 & N.W. 1/4, SECTION 20, TOWNSHIP 7 SOUTH,
RANGE 3 WEST OF THE WILLAMETTE MERIDIAN, POLK COUNTY, OREGON

STONE w/"X"
S.W. COR. JOHN
MARTIN D.L.C.
EAST 0.95'



SCALE: 1" = 100'



LEGEND:

- - MONUMENT FOUND
- - MONUMENT SET
- () - BEARING & DISTANCE OF RECORD
- UTILITY EASEMENT, AS NOTED.
- T.I.L. - TACK IN LEAD
- IN ADDITION TO THE EASEMENTS SHOWN HEREON, THERE IS A 10' WIDE UTILITY EASEMENT ALONG THE STREET LOT LINE OF EVERY LOT, EXCEPT AS NOTE
- 20' BUILDING SETBACK REQUIRED ON ALL LOTS.
- 1/2" IRON PIPE SET AT ALL LOT CORNER AND POINTS OF CURVE EXCEPT AS NOTED
- CHORD DISTANCE & BEARING SHOWN ON ALL CURVES.
- ALL LOTS SUBJECT TO AN EASEMENT 5 FEET IN WIDTH AND ADJACENT TO ALL SIDE AND REAR LOT LINES FOR UTILITY PURPOSES, EXCEPT AS NOTED.

€ CURVE DATA

CURVE A	R = 120'
	T = 120'
	Δ = 90°
	L = 188.50'
	LC = 169.71'
CURVE B	R = 577.91'
	T = 74.44'
	Δ = 14°40'47"
	L = 148.07'
	LC = 147.66'
CURVE C	R = 590.53'
(Property Line)	T = 50'
	Δ = 9°40'47"