

8 2w 18

SEE MAP 8 2w 07c

SEE MAP 8 2w 07

RECEIVED

DEC 29 1994

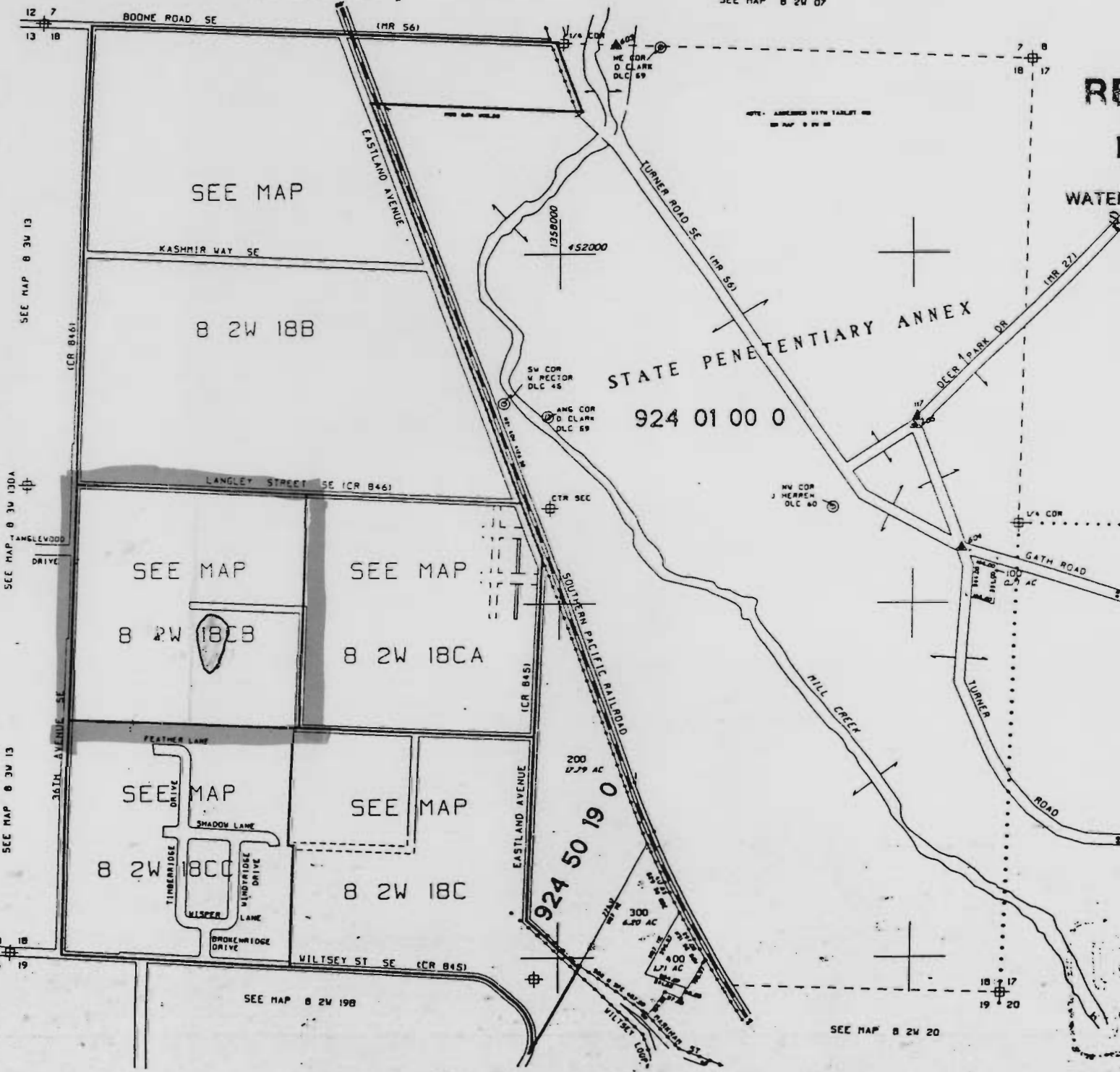
WATER RESOURCES DEPT.  
SALEM, OREGON

CERTIFICATE NO.

21719

"Permit No.

Application No. R-8005)

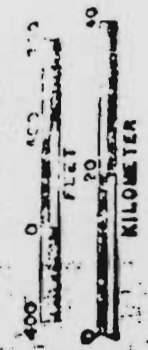


STATE PENITENTIARY ANNEX

924 01 00 0

924 50 19 0

1"=400'  
22-JAN-82



SEE MAP 8 3w 13

SEE MAP 8 3w 13DA

SEE MAP 8 3w 13

13 18  
24 19

SEE MAP 8 2w 19B

SEE MAP 8 2w 20

SEE MAP 8 2w 19A