

SEC 19 T9S R1W

Application No R-80034  
Permit No.

CERTIFICATE NO. 71222

Reentrant Cor at  
J.M. Pritchard DLC #43

SE Cor of  
J.M. Pritchard DLC  
1W

RECEIVED

JAN 30 1995

WATER RESOURCES DEPT.  
SALEM, OREGON

20048-2  
EE. HATCH  
206-544  
471-415  
660' 40 1/4 WEST

Sec. NIEL DLC

EE. HATCH  
206-544  
20048  
641-016 LE

29.90 Ac  
GL5

2990'  
518'

POND 2

CUIVERT

37.8 Ac  
621'

19.95 Sch  
N 56° 30' E  
Meander May 1852

(1303.59)

(4816)  
3.76 ch  
581° E

LINN COUNTY

SOUTH

DINE

ANTHAM

NORTH

Harold & Audrey CHRISTENSEN

H U Z M A

AISANDNER  
405-227  
20058  
00007

7.50 ch (495)

5.75 ch (322)

18.00 ch (490)

5.75 ch (322)

18.00 ch (490)

5.75 ch (322)

18.00 ch (490)

5.75 ch (322)

18.00 ch (490)

5.75 ch (322)

18.00 ch (490)

5.75 ch (322)

18.00 ch (490)

5.75 ch (322)

18.00 ch (490)

5.75 ch (322)

18.00 ch (490)

5.75 ch (322)

18.00 ch (490)

5.75 ch (322)

18.00 ch (490)

5.75 ch (322)

18.00 ch (490)

5.75 ch (322)

18.00 ch (490)

5.75 ch (322)

18.00 ch (490)

5.75 ch (322)

18.00 ch (490)

5.75 ch (322)

18.00 ch (490)

5.75 ch (322)

18.00 ch (490)

5.75 ch (322)

18.00 ch (490)

5.75 ch (322)

18.00 ch (490)

5.75 ch (322)

18.00 ch (490)

5.75 ch (322)

18.00 ch (490)

5.75 ch (322)

18.00 ch (490)

5.75 ch (322)

18.00 ch (490)

5.75 ch (322)

18.00 ch (490)

5.75 ch (322)

18.00 ch (490)

5.75 ch (322)

18.00 ch (490)

5.75 ch (322)

18.00 ch (490)

5.75 ch (322)

18.00 ch (490)

5.75 ch (322)

18.00 ch (490)

5.75 ch (322)

18.00 ch (490)

5.75 ch (322)

18.00 ch (490)

5.75 ch (322)

18.00 ch (490)

5.75 ch (322)

18.00 ch (490)

5.75 ch (322)

18.00 ch (490)

5.75 ch (322)

18.00 ch (490)

5.75 ch (322)

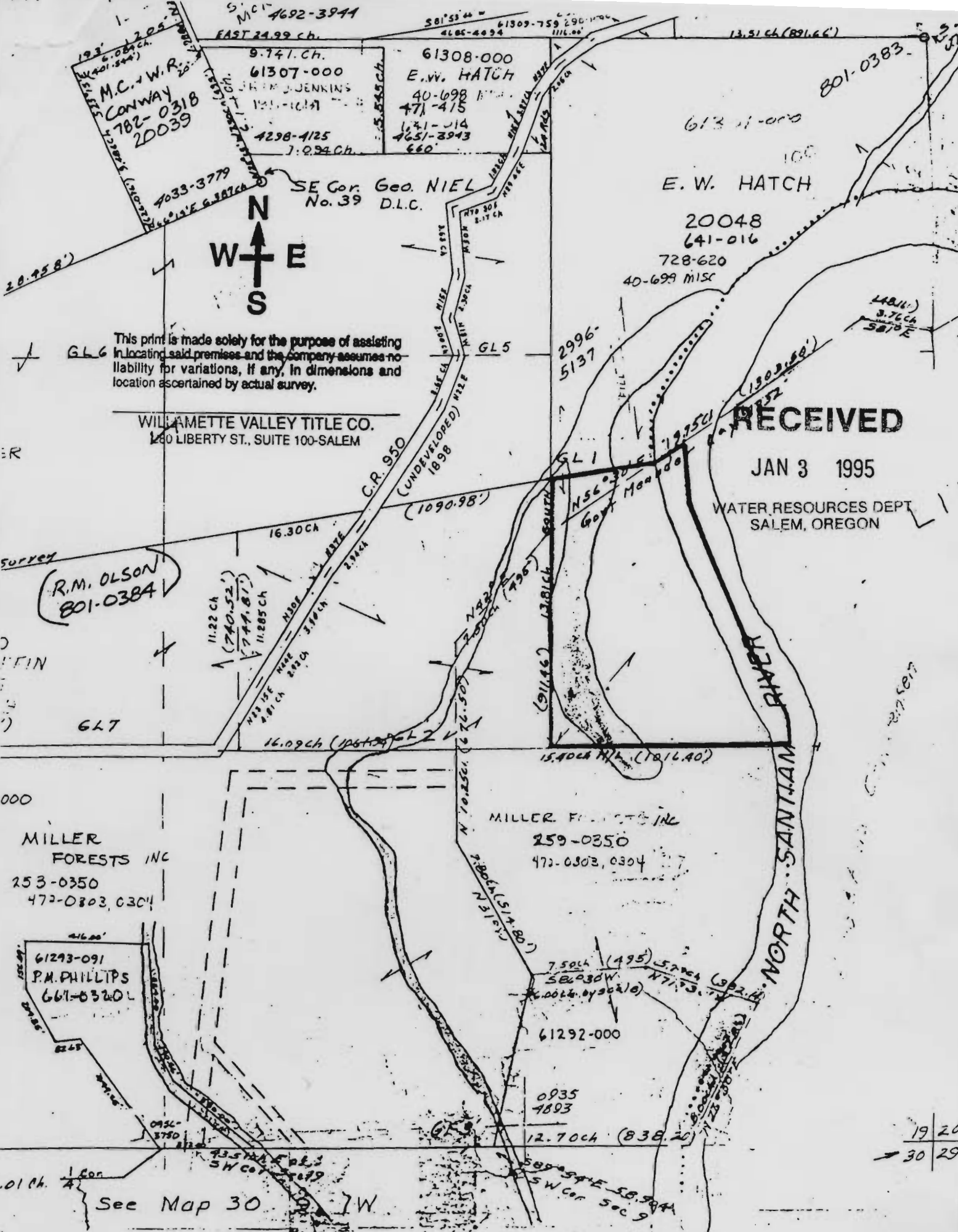
18.00 ch (490)

5.75 ch (322)

18.00 ch (490)

5.75 ch (322)

18.00 ch (490)



**RECEIVED**

JAN 3 1995

WATER RESOURCES DEPT.  
SALEM, OREGON

This print is made solely for the purpose of assisting in locating said premises and the company assumes no liability for variations, if any, in dimensions and location ascertained by actual survey.

WILLAMETTE VALLEY TITLE CO.  
1280 LIBERTY ST., SUITE 100-SALEM