

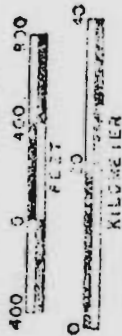
COLUMBIA COUNTY

1" = 400'

8 INDEX
CLATSKANIE

7 4 16

SCALE 1:9600



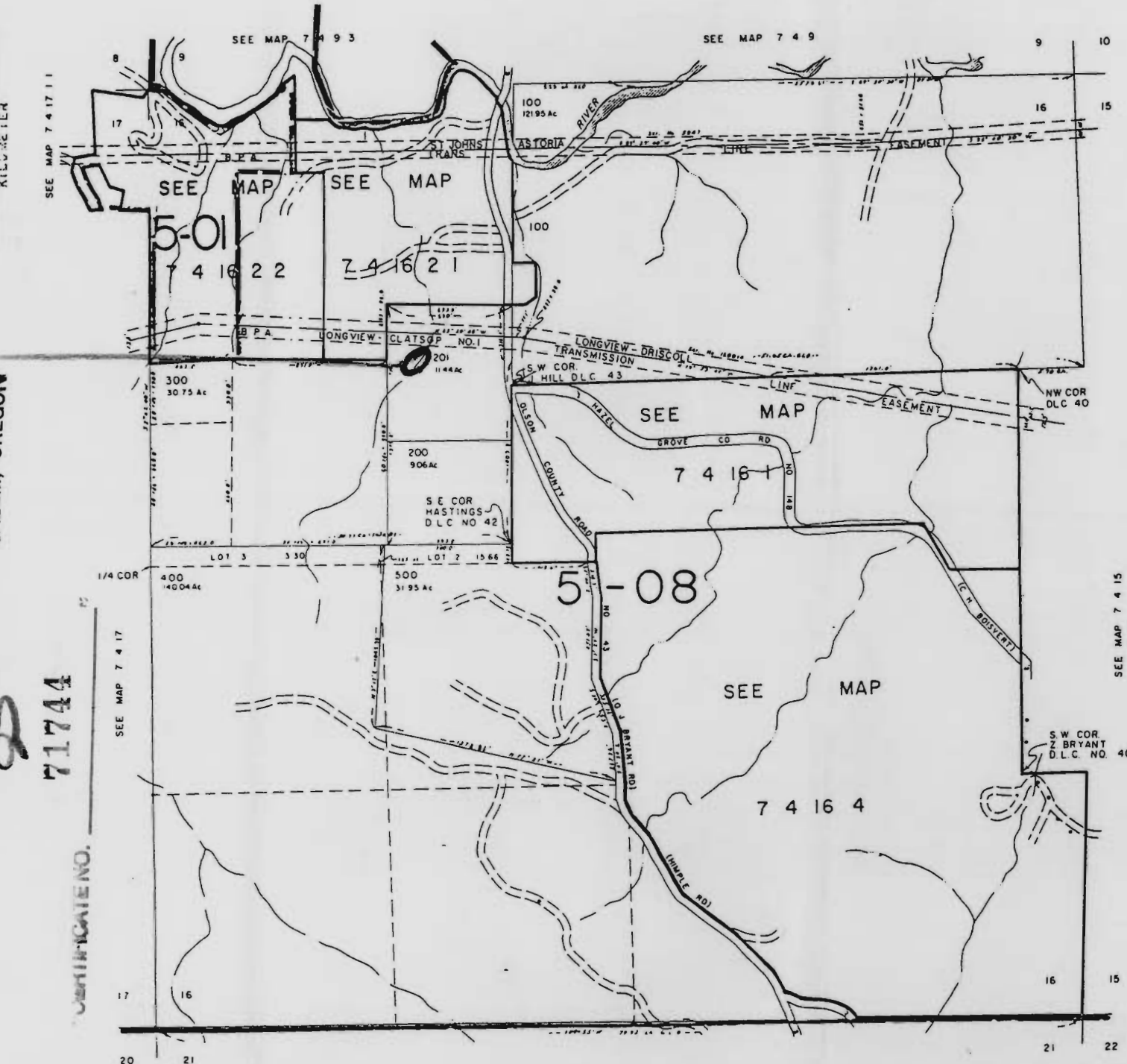
RECEIVED

JAN - 5 1995

RECEIVED DEC 30 1994
WATER RESOURCES DEP.
SALEM, OREGON

71744

INVESTIGATE NO.



Application No. R-8058
Permit No.

7 4 16
& INDEX