

SECTION 24 T.26S. R.4W. W.M.  
DOUGLAS COUNTY

REVISED ON  
9 - 3 - 93

26 4 24  
& INDEX

THIS MAP WAS PREPARED FOR  
ASSESSMENT PURPOSE ONLY.

72766  
CATE NO.

1"=400'

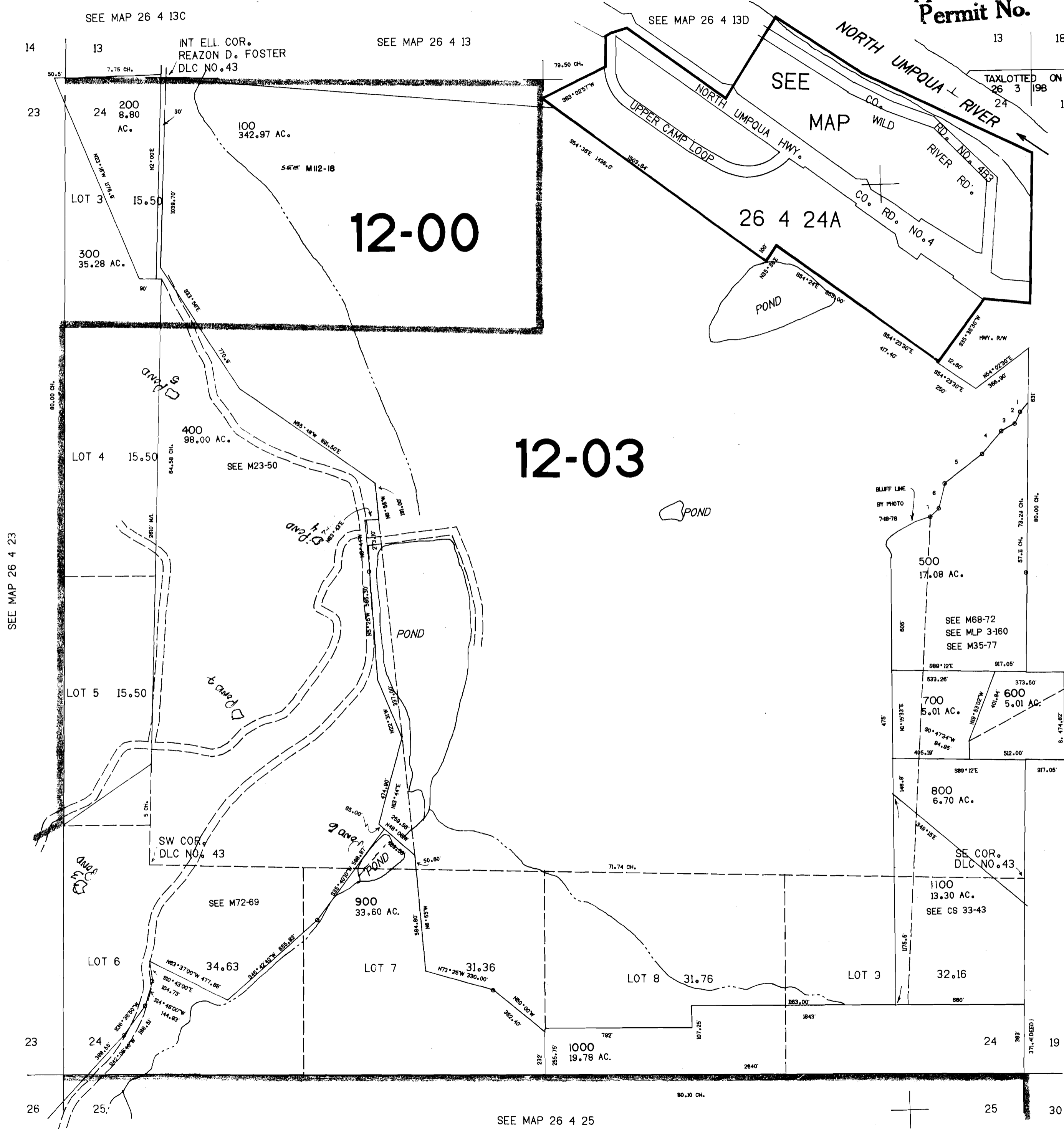
Application No. R-80054  
Permit No.

CANCELLED NO.'S

606.000

PARCEL 200  
1. 843°16'W 64.80'  
2. 931°56'W 87.50'  
3. 882°45'W 80.00'  
4. 940°35'W 84.80'  
5. 850°55'W 254.40'  
6. 82°26'W 130.50'  
7. 848°36'W 65.70'

SEE MAP 26 3 19B



SEE MAP 26 4 25

26 4 24  
& INDEX