

SECTION 26 T.27S. R.6 W. W.M.
DOUGLAS COUNTY

1" = 400'

"CERTIFICATE NO. 71793"

27 6 26
& INDEX

REVISED ON
6-7-94

SEE MAP 27 6 23

RECEIVED
APR - 3 1995
WATER RESOURCES DIV.
SALEM, OREGON

NW COR.
JOHN KELLY
DLC NO. 41

CANCELLED NO.S
1502

4-02

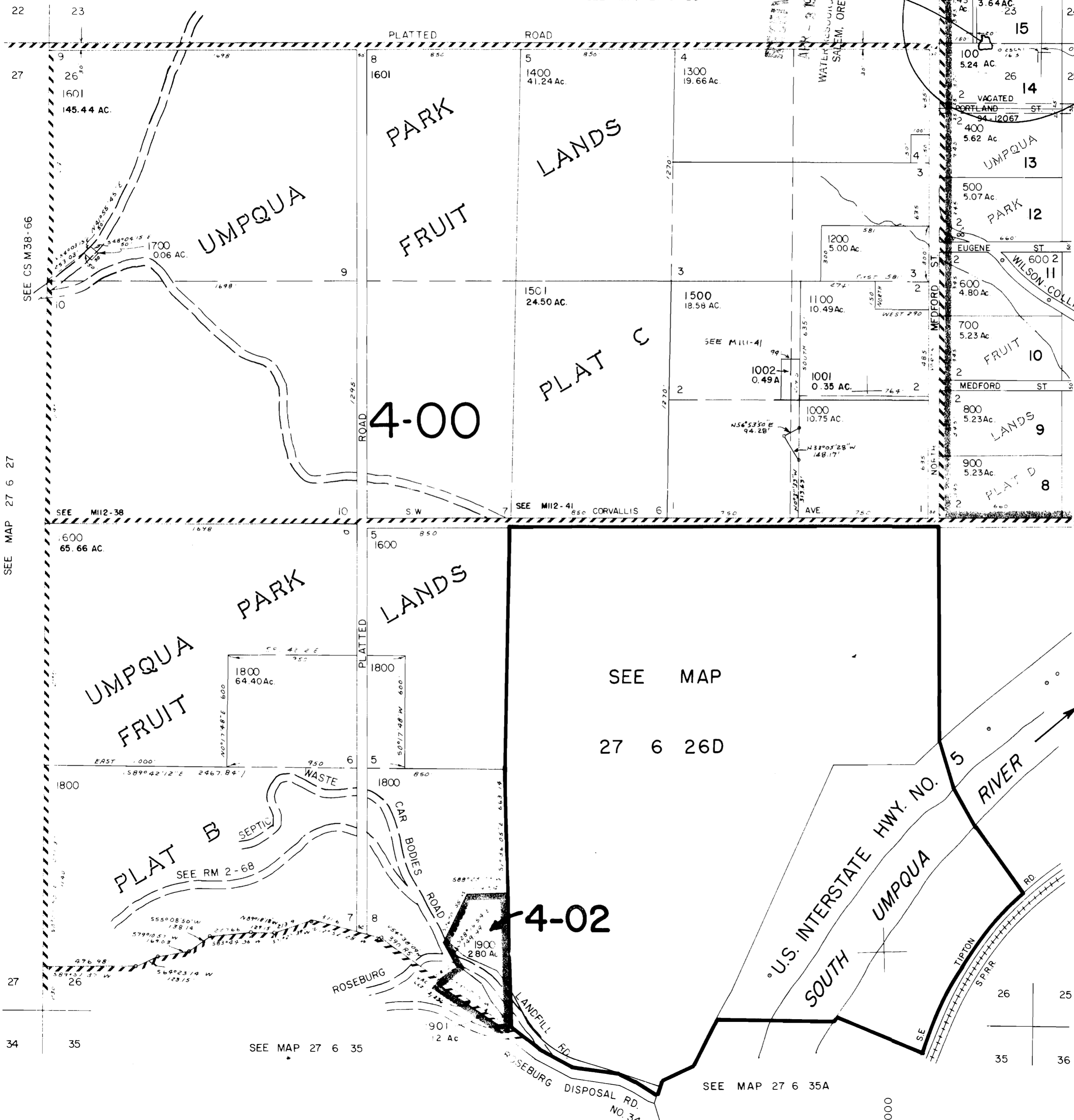
SEE MAP 27 6 25BC

SEE MAP 27 6 25C

SEE MAP 27 6 25BB

570,0

Application No. R-80152
Permit No.



22

27

SEE MAP 27 6 27

27

34

23

26

35

SEE MAP 27 6 35

SEE MAP
27 6 26D

SEE MAP 27 6 35A

26 25
35 36

27 6 26
& INDEX