

NE 1/4 SECTION 36 T2S RIW W.M.

2S 1 36 A

WASHINGTON COUNTY OREGON

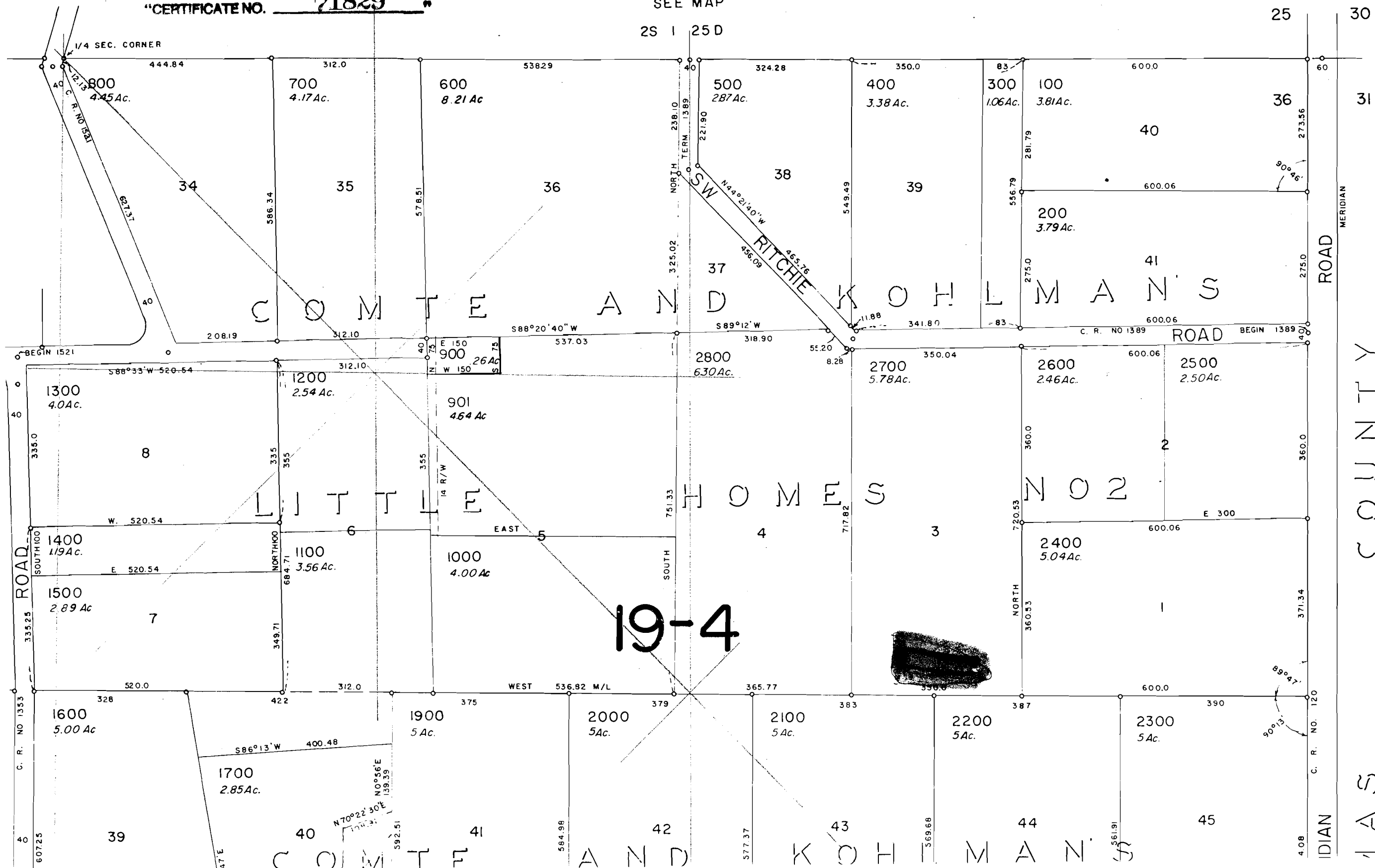
SCALE 1"=200'

Permit No. R-80216

"CERTIFICATE NO. 71829"

SEE MAP

2S 1 25 D



COMTE AND KOHLMAN'S  
LITTLE HOMES NO. 2  
LOTS 1-8, 34-41  
COMTE AND KOHLMAN'S  
LITTLE HOMES NO. 1  
LOTS 1-9, 39-45

ROAD

COUNTY

INDIAN

19-4

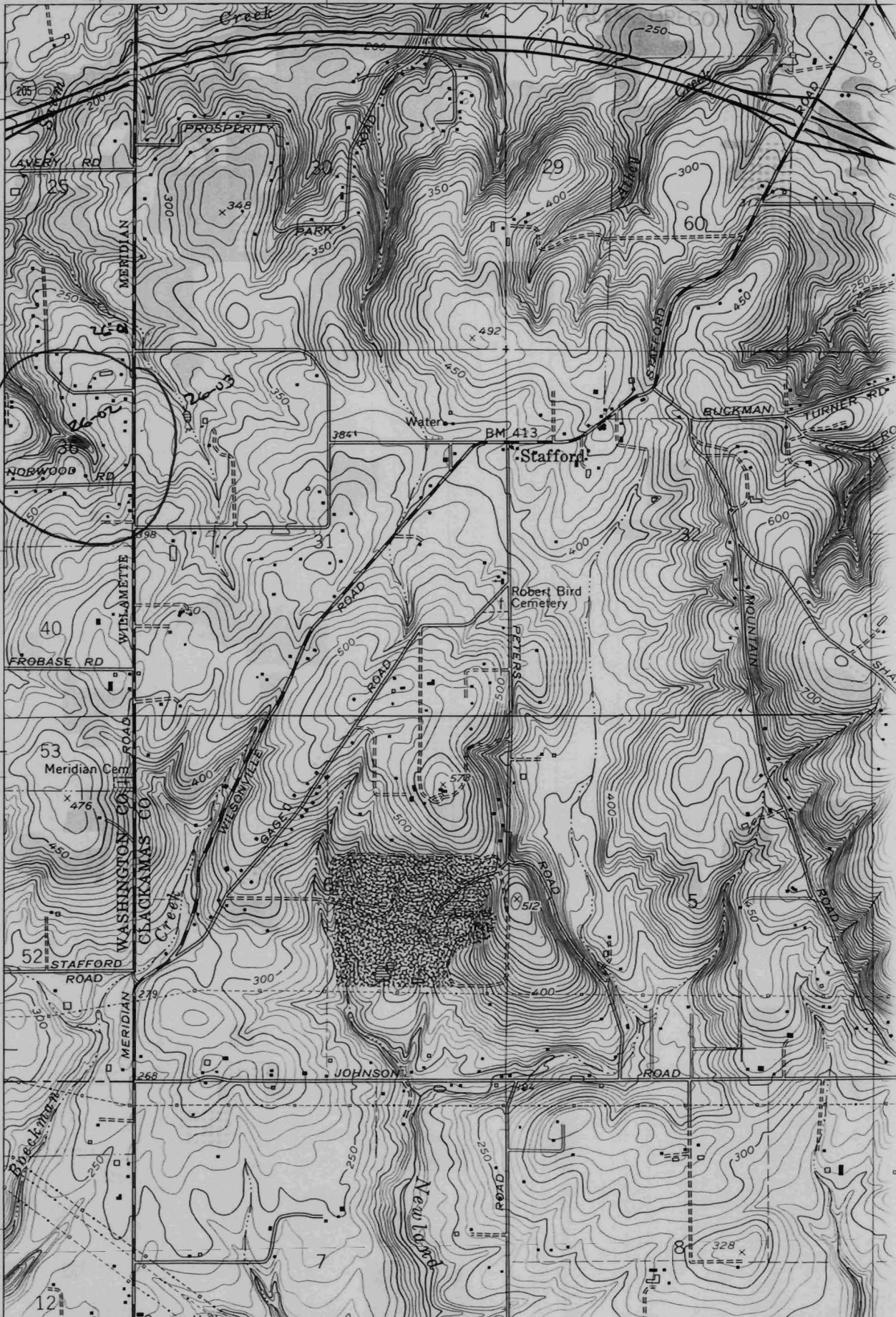
1961 Canby Quad  
Photo revised 1970 + 1975



UNITED STATES  
DEPARTMENT OF THE INTERIOR  
GEOLOGICAL SURVEY

122° 45' R.1.W. R.1.E. 521 000m.E. 522 TER RES SUR 42'30" 523  
45° 22'30"

5024000m.N.  
PORTLAND 13 MI. TO INTERSTATE 5  
0.4 MI. TO INTERSTATE 5  
5023  
5022  
T. 2 S.  
T. 3 S.  
5021  
5020  
20'  
5019



"CERTIFICATE NO. 71829"  
Application No. R-80214  
Permit No.