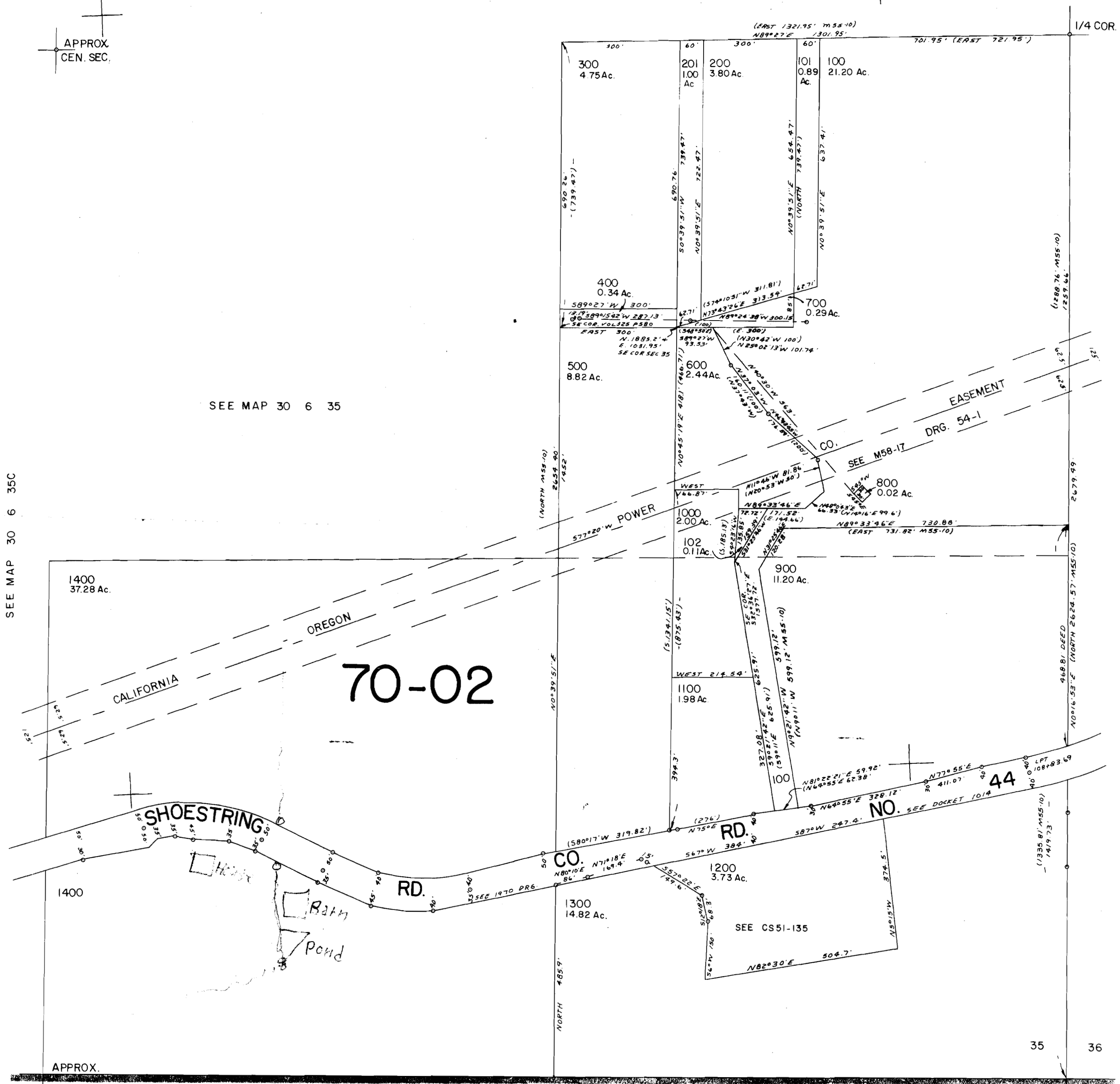
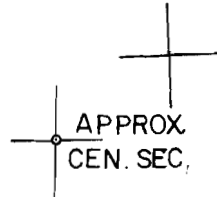


This map was prepared for assessment purpose only.

SE 1/4 SEC. 35 T.30S. R.6W. W.M.  
DOUGLAS COUNTY

30 6 35D

1" = 200'



SEE MAP 30 6 35

SEE MAP 30 6 35C

SEE MAP 30 6 36C

70-02

CALIFORNIA

OREGON

SHOESTRING RD.

RD.

CO.

NO.

44

"CERTIFICATE NO. 71835"

SEE MAP 31 6 2

Application No. R-80223  
Permit No.

2

1

APPROX.

1/4 COR.

35

36

REC

DEC 1992

468,000

30 6 35D