

SW1/4 SEC. 10 T.26S. R.3W. W.M.
DOUGLAS COUNTY

REVISED ON
10-11-93

26 3 10C

1"=200'

RECORDED

JAN - 8 1995

WATER RESOURCES DIVISION
SALEM, OREGON

CEN. SEC.

SEE MAP 26 3 10

SEE MAP 26 3 10A

SEE CS51-271

SEE M36-43

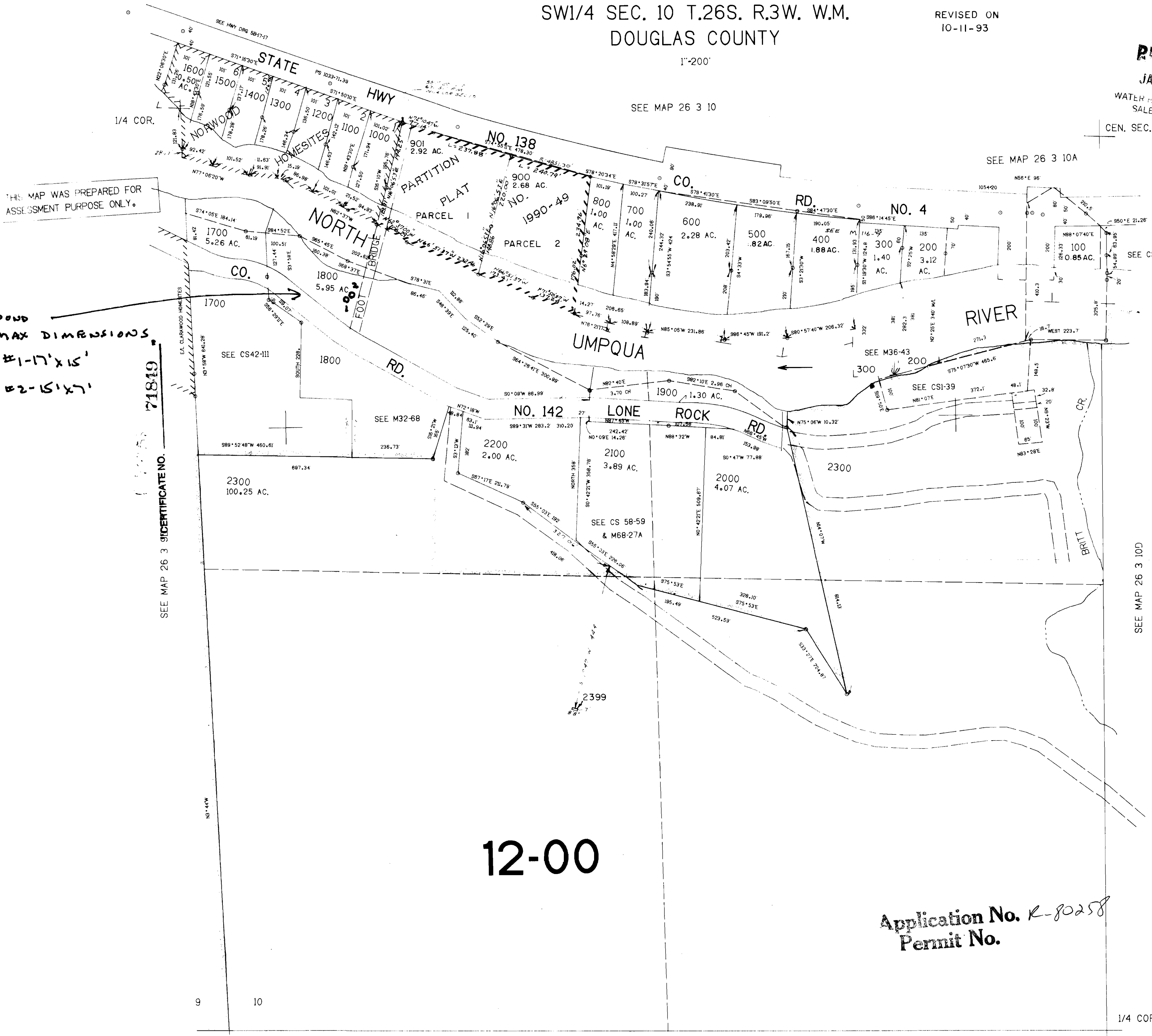
SEE CSI-39

SEE MAP 26 3 10D

THIS MAP WAS PREPARED FOR
ASSESSMENT PURPOSE ONLY.

POUND
MAX DIMENSIONS
#1-17'x15'
#2-15'x7'

71819
SEE MAP 26 3 9 CERTIFICATE NO.



12-00

Application No. R-80258
Permit No.

SEE MAP 26 3 15

611.000

26 3 10C