

SECTION 10 T.30S. R.4W. W.M.
DOUGLAS COUNTY

REVISED ON
1-10-92

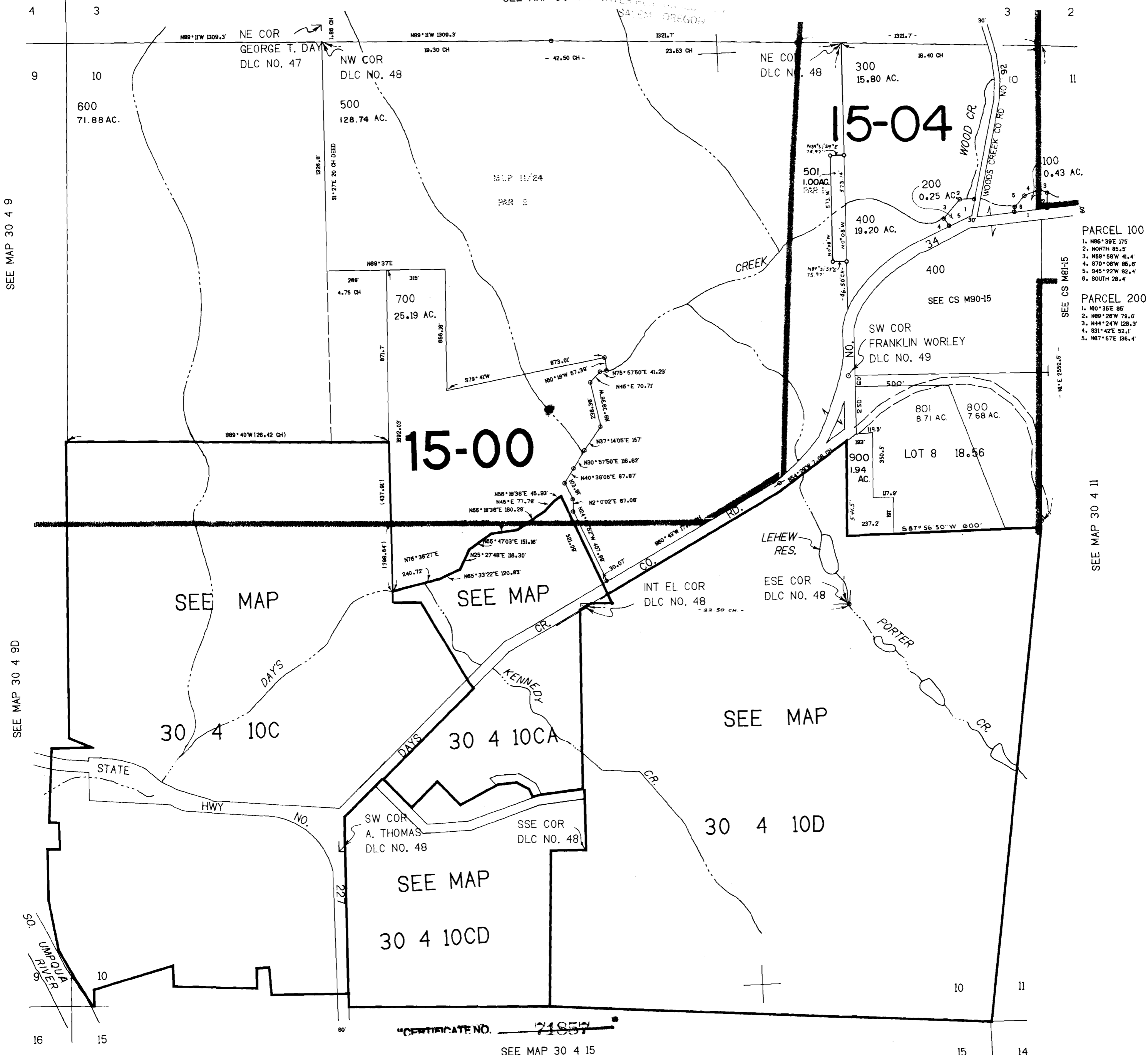
30 4 10
& INDEX

THIS MAP WAS PREPARED FOR
ASSESSMENT PURPOSE ONLY.

1"=400'

JAN - 3 1995

SEE MAP 30 4 3 WATER RES. SALEM OREGON



- PARCEL 100
1. N86°39'E 175'
 2. NORTH 85.5'
 3. N69°58'W 41.4'
 4. S70°08'W 86.6'
 5. S45°22'W 82.4'
 6. SOUTH 28.4'

- PARCEL 200
1. N30°35'E 85'
 2. N89°26'W 78.6'
 3. N44°24'W 128.3'
 4. S31°42'E 52.1'
 5. N67°57'E 138.4'

SEE MAP 30 4 9

SEE MAP 30 4 9D

SEE CS M81-15

SEE MAP 30 4 11

CERTIFICATE NO. 71857

SEE MAP 30 4 15

App. # R-80267

486000

30 4 10
& INDEX