

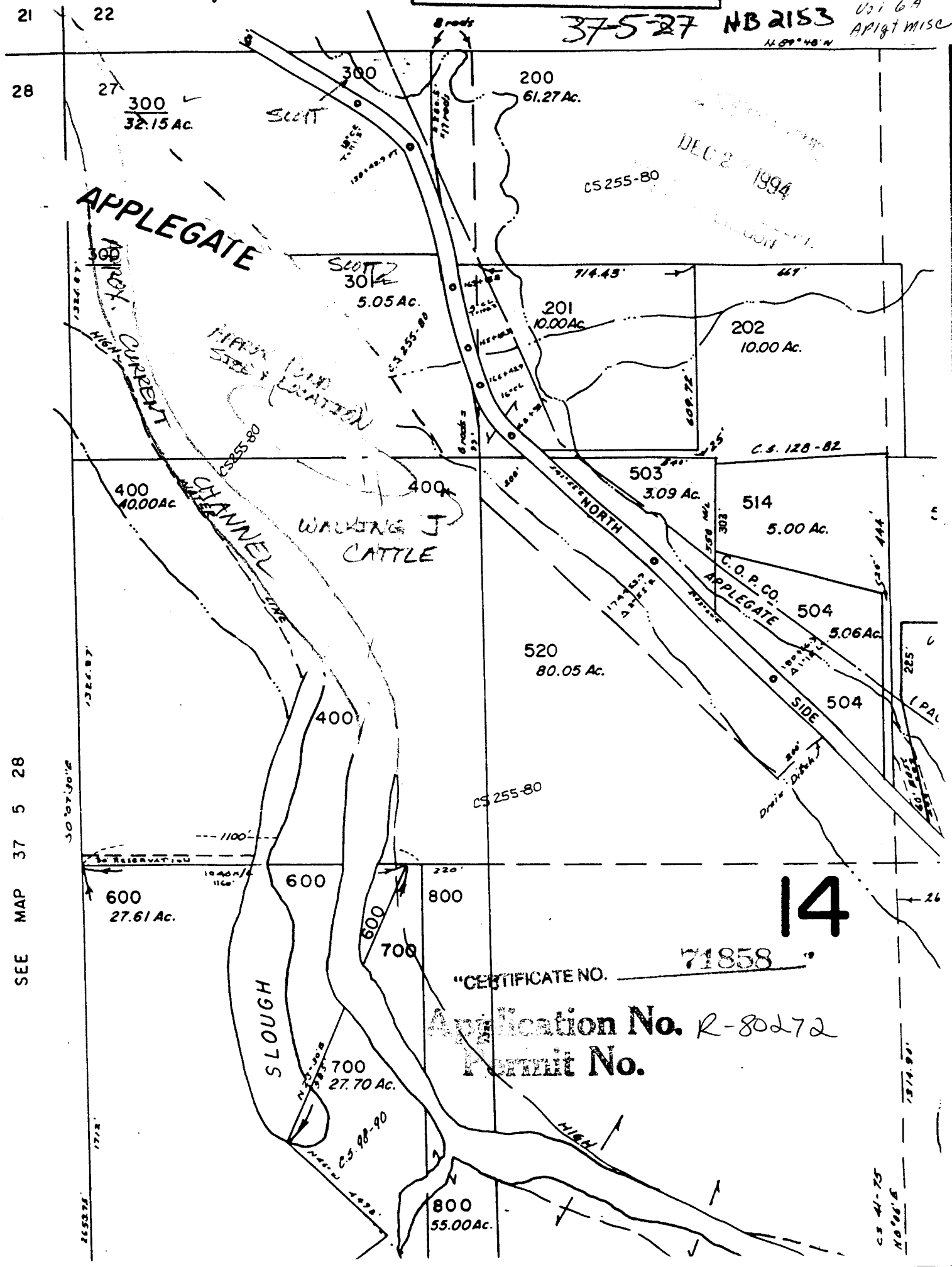
5 from prop. line
to drill well

Nahl 846-6526

This map was prepared for
assessment purpose only.

SEE MA R80272
1-1-43
U2169
AP187 MISC

375-27 NB 2153
N 69° 48' W



DEC 2 1994

CS 255-80

C.S. 128-82

C.O.P.CO.
APPLEGATE

14

"CERTIFICATE NO. 71858"

Application No. R-80272
Permit No.

SEE MAP 37 5 28

30° 07' 30" E

RESERVATION

600 27.61 Ac.

700 27.70 Ac.

800 55.00 Ac.

C.S. 41-75
N 0° 06' E