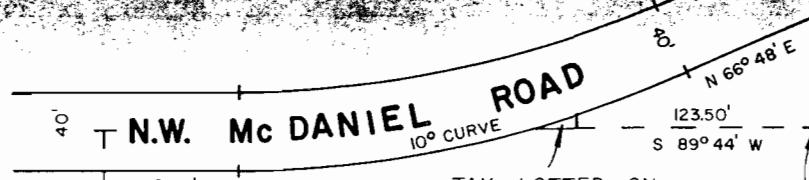


SE 1/4 SW 1/4 SECTION 27 T1N R1W W.M.

WASHINGTON COUNTY OREGON

SCALE 1"=100'

IN 1 27CD



TAX LOTTED ON MAP IN 1 27CA

100
5.73 AC.

SEE MAP
IN 1 27CA

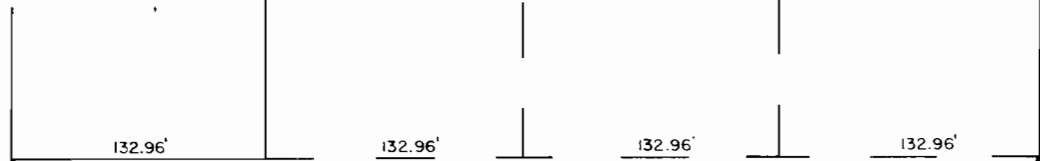
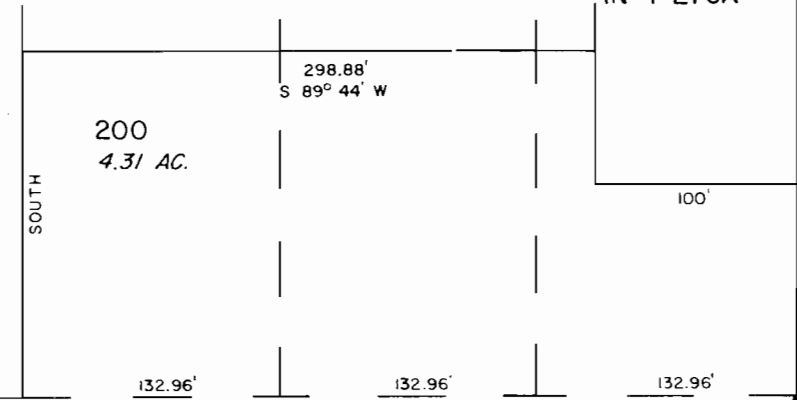
SEE MAP
IN 1 27DB

"CERTIFICATE NO. 71865"

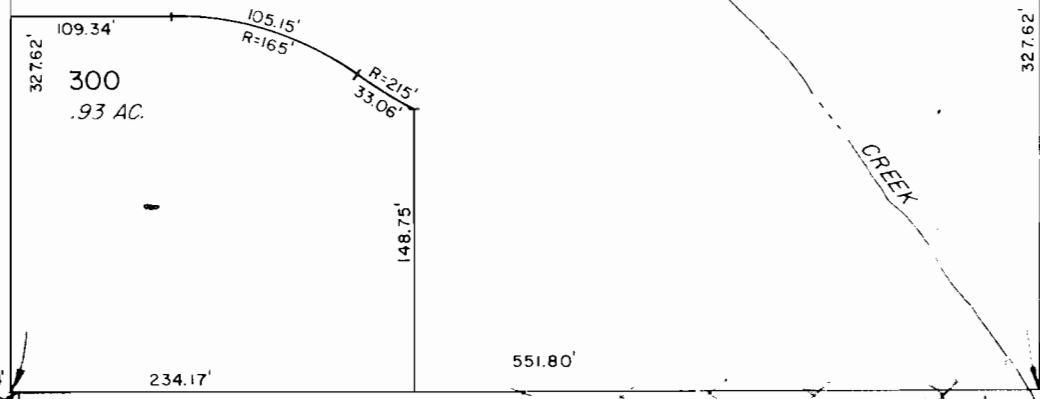
Map No. R 80 279
Permit No.

SEE MAP
IN 1 27CA

50'
AVENUE

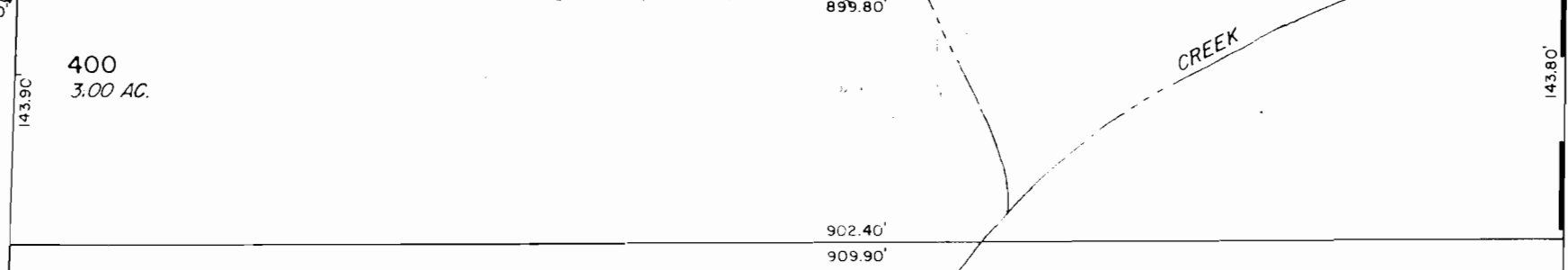


N.W.
KATHLEEN
DRIVE



SEE MAP
IN 1 27CC

50'
40'
50'



51-50

SEE MAP
IN 1 27DC

N.W.
MAPLE HILL
LANE

(CR. NO. 1055)

150'
N 0° 21' W

S 0° 21' W
150'

EAST LINE J.A. FLIPPIN DLC. 55

CREEK

CREEK

N 89° 44' E
372.32'

675.24'
SOUTH