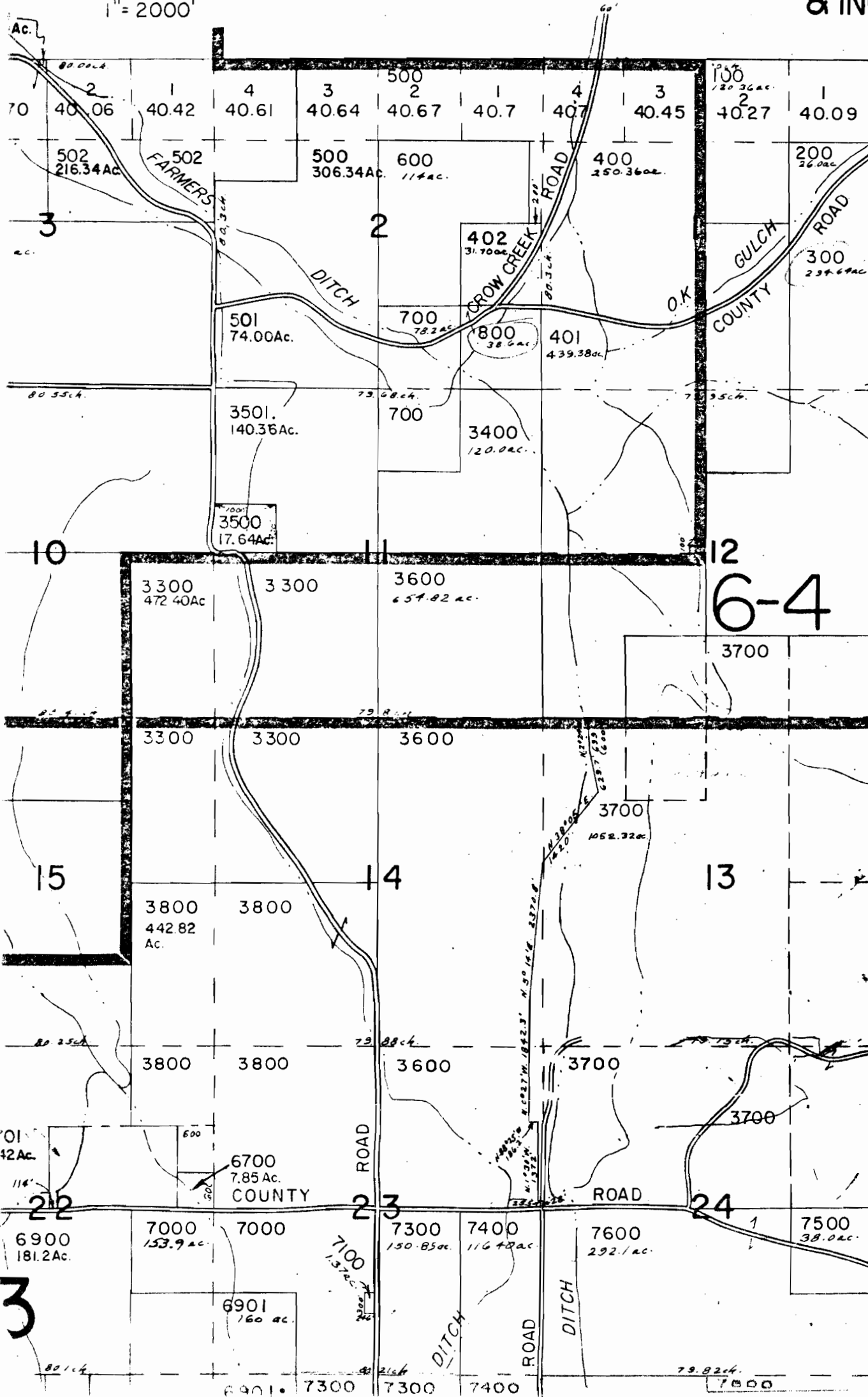


117° 07' 30" 2870000 FEET 492 493 5' 49

1" = 2000'



- CANCELLED  
NO. 5800
- 5900
  - 7200
  - 9200
  - 9600
  - 9601
  - 9602
  - 9603
  - 9604
  - 9605
  - 9606
  - 10800
  - 5501
  - 5502
  - 5503
  - 5504
  - 5600
  - 5601
  - 3701
  - 3702
  - 3703
  - 3704
  - 3705
  - 3706
  - 4503
  - 10901
  - 5700
  - 6000 THRU
  - 6013
  - 6100 THRU
  - 6104
  - 6200 THRU
  - 6207
  - 8203
  - 2100
  - 2401
  - 5507
  - 1405
  - 5505
  - 5506
  - 5508
  - 5511
  - 5512
  - 5202
  - 6702
  - 6703
  - 4704
  - 2403
  - 8905
  - 8906

6-4

SEE MAP 2S 46

2601  
DETAIL  
Sec. 17

Beg. S 617.33' from  
E 1283.64' from  
NW Cor. Section