

"CERTIFICATE NO. 71924"

PLAT NO. R-80355

SE1/4 NW1/4 SEC. 13 T.19 S. R. 3 W.W.M.
LANE COUNTY

19-03 13
11-24 .1000

FOR ASSESSMENT
AND TAXATION
USE ONLY

19 03
CRESW

1" = 100'

SEE MAP 19 03 13 21

APPROX. 1/16 COR.

0-02

APPROX. 1/16 CO

1000
12.30 AC.

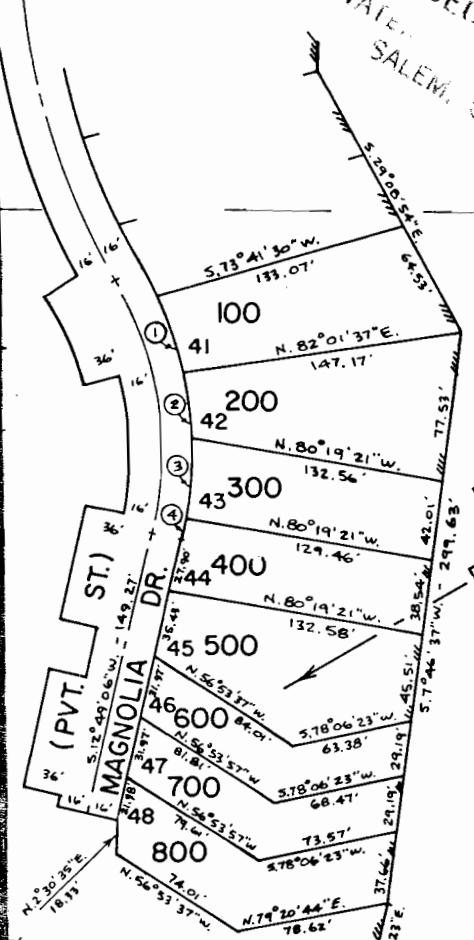
PARSON'S

BUTLER'S

040-11

ROAD

RIVER



EMERALD VALLEY
PHASE I

P.U.D. 040-11

- 1. LC = 5.18° 46' 55" E.
- 2. LC = 5.7° 38' 55" E.
- 3. LC = 5.3° 34' 25" W.
- 4. LC = 5.11° 19' 03" W.

TAX LOTTED ON
MAY 15 05 15 21

900
5.00 AC.

SEE MAP 19 03 13

TH = 25.75 CH = 1649.5' (PLAT)

1101
1.46 AC.

1102
1.00 AC.

(DEED)

(DEED)

(DEED)