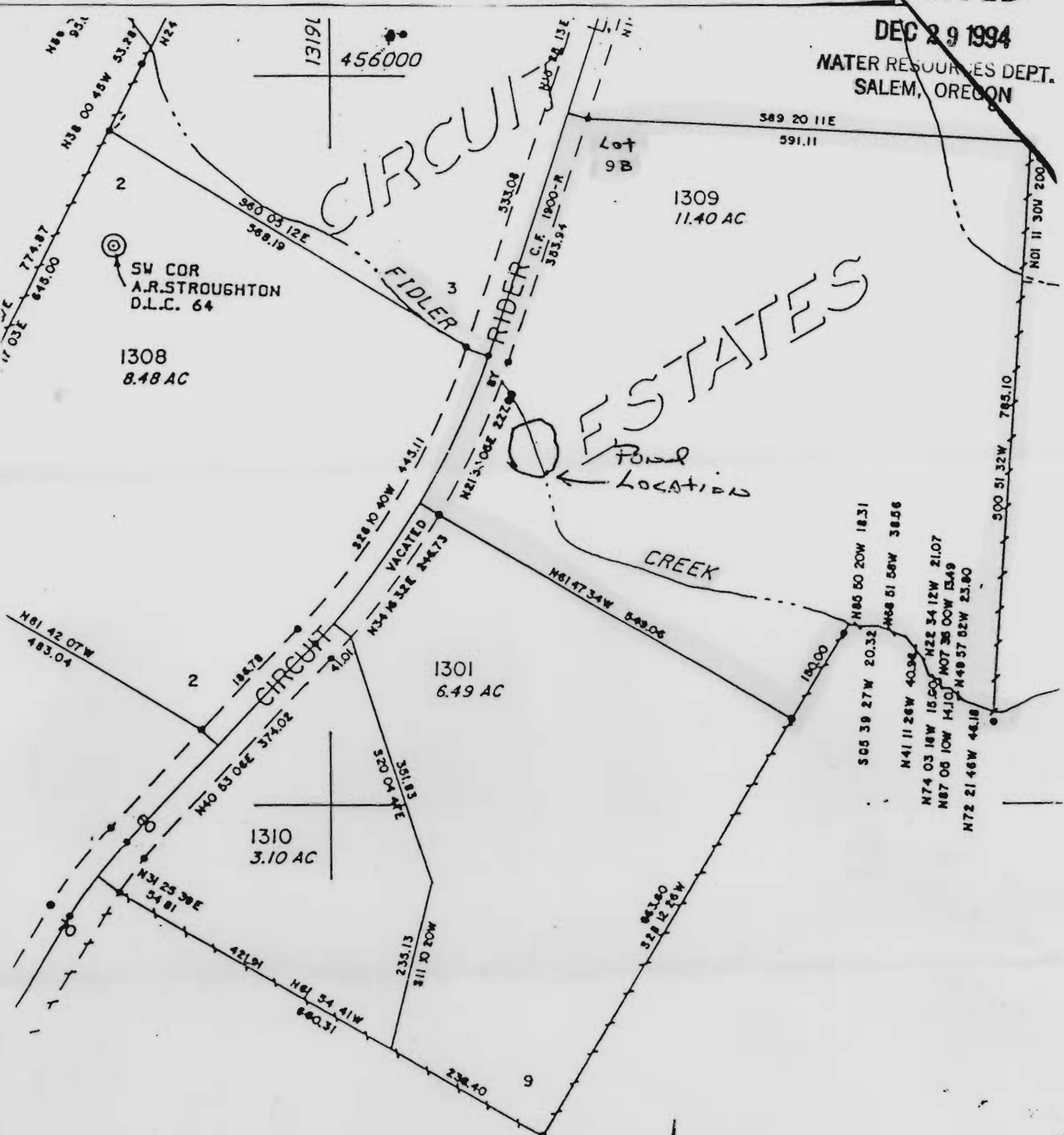


RECEIVED

DEC 29 1994
WATER RESOURCES DEPT.
SALEM, OREGON



"CERTIFICATE NO. **71941** " SEE MAP 8 4W 13B

This map is made solely for the purpose of assisting in locating said premises and the Company assumes no liability for variations, if any, in dimensions and location ascertained by actual survey.

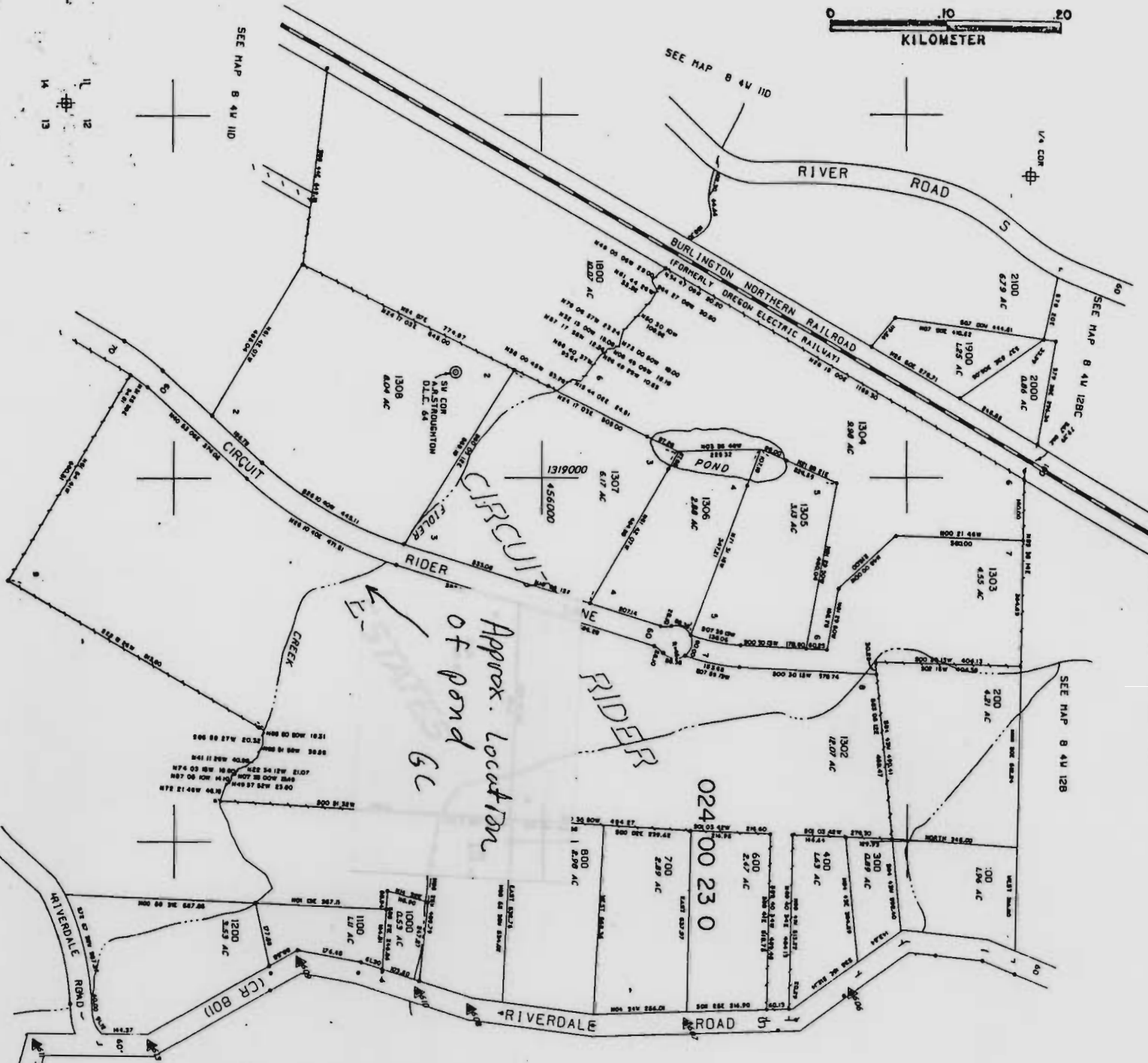
TICOR TITLE INSURANCE CO.

Application No. R-80 377
Permit No.

SCALE 1" = 400'

200 0 200 400
FEET

0 10 20
KILOMETER

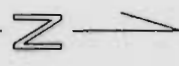


SEE MAP 8 4W 120
Application No. R-80377
Permit No.

CERTIFICATE NO.

71941

1-200
26-MAY-82



CTR. SEC. 
 DELETED TAX LOT NUMBERS
 500
 1400
 1500
 1600
 1700
 1300

8 TW 12C

SEE MAP 8 4W 13B

SEE MAP 8 4W 110

SEE MAP 8 4W 110

SEE MAP 8 4W 128C

SEE MAP 8 4W 128

12
13

8 4W 12C