

SEE SEC 2 3 22

29.2

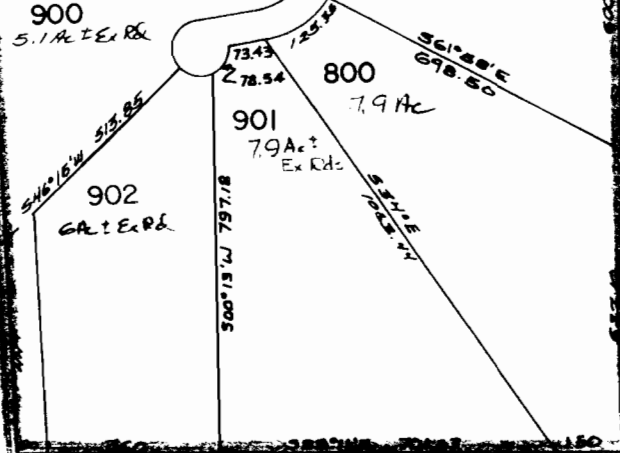
COUNTY

WASHINGTON

RECEIVED MAR 1 1 1991

71950

R-80390



2200
77.56 Ac

2100
80.6 Ac

2323
2000
63.8 Ac
TAX LOT #

1600
29.2 Ac

CSP-3141

N89°21'E
680

N89°32'E
680

1700
19 Ac

1800
12.4 Ac

CSP-4066

1900
11.2 Ac

HILL

N85°15'W
FINNIGAN

SEE SEC 2 3 26

2 3 23

Reservations

- ①
- ②
- ③

22

23

27

26

23

24

26

25