

55-06

0.52 Ac.

302  
5.00 Ac.  
21670

202  
8.92 Ac.  
21740

201  
9.76 Ac.  
31467

1800  
40.91 Ac.  
31703  
31747

1900  
0.93 Ac.  
31587

2001  
30.40 Ac.

2000  
5.89 Ac.  
31787

2001

PB

PB

LOEB  
Hartman 2001

31600

32000

SEE MAP 5 3E 11

1/4 Cor.

627.25

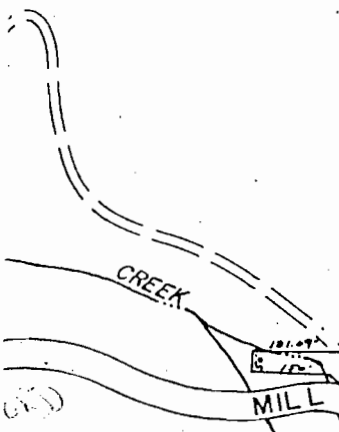
RD.

6000 CA.

MILL

GRAYS

RD. 648



D

10

11

15

14

PB

JUL 1 1 1990

on No. R-80398

Permit No.

5 3E 10

CERTIFICATE NO.

71956

BOOK 41

SEE MAP 5 3E 14

1/4 Cor

600  
40.00Ac.

CANYON

CR

80.00 h

700  
200.00Ac.



14

13

WEST

23

24

71956

"CERTIFICATE NO. \_\_\_\_\_"

Application No. R-80398

Permit No.

10 4-4

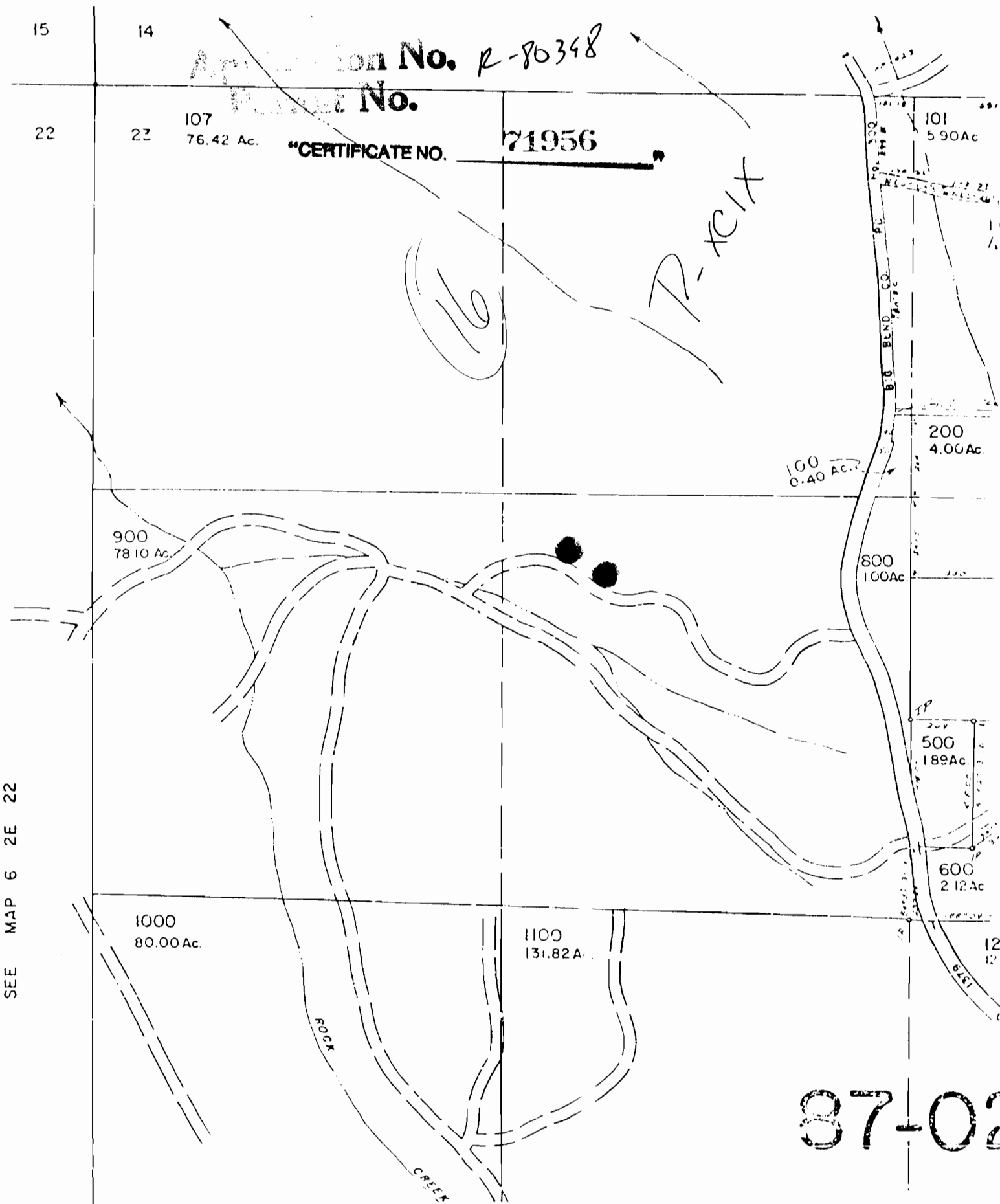
Application No. R-80348

Parcel No.

"CERTIFICATE NO. 71956"

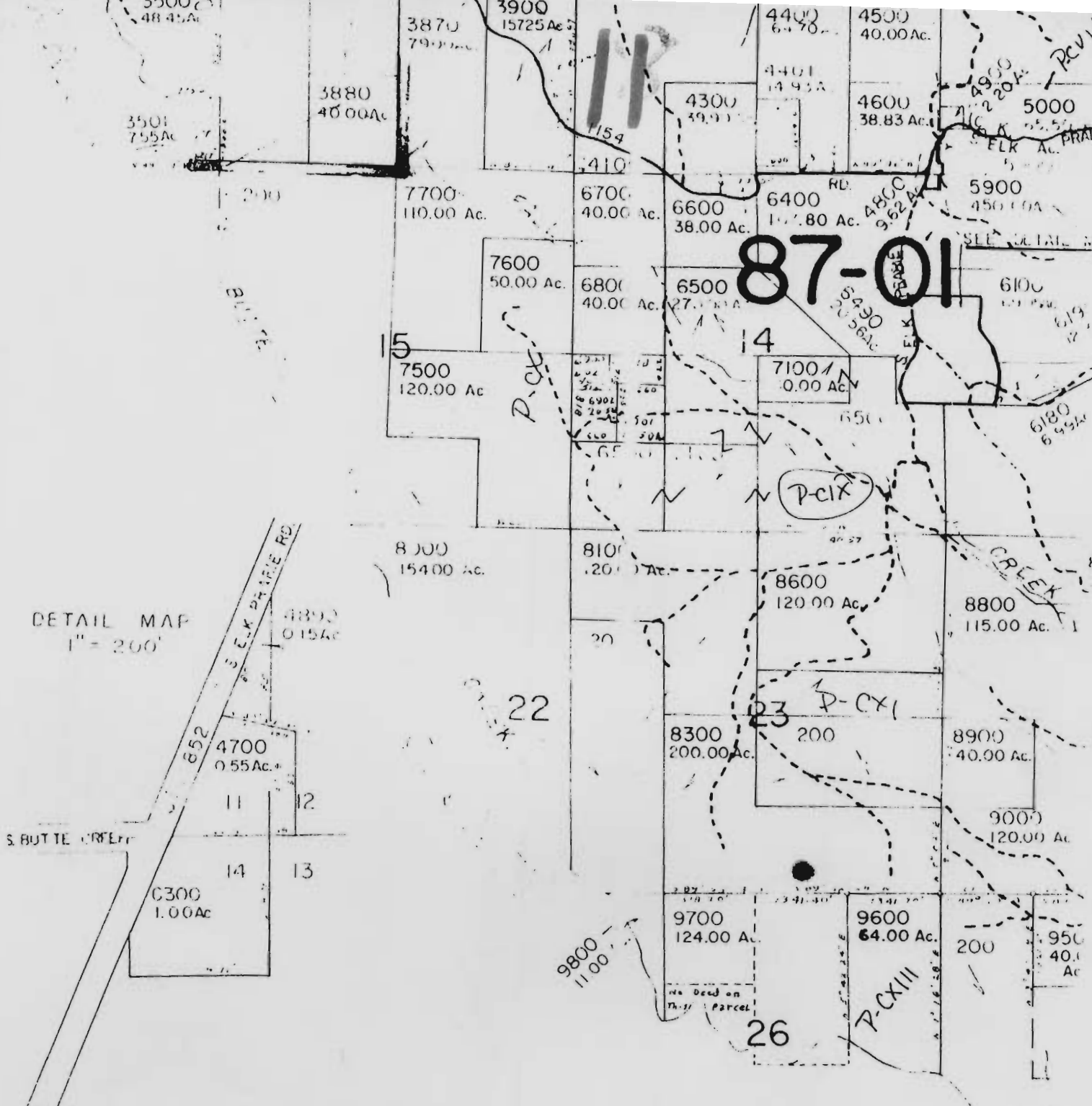
6

P-XIX



SEE MAP 6 2E 22

87-02



DETAIL MAP  
1" = 200'

"CERTIFICATE NO. 71956"

Application No. R-80398  
Permit No.

RECEIVED

DEC 23 1994  
WATER RESOURCES DEPT.  
SALEM, OREGON

This map is made solely for the purpose of assisting in locating said premises and the Company assumes no liability for variations, if any, in dimensions and location ascertained by actual survey.

WATER RESOURCES DEPT. SALEM, OREGON