

Legal 8-5-27  
#700

Jenetta M. Bond

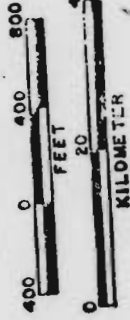
POLK COUNTY

SCALE 1" = 400'

SEE MAP NO B 5 22

8527

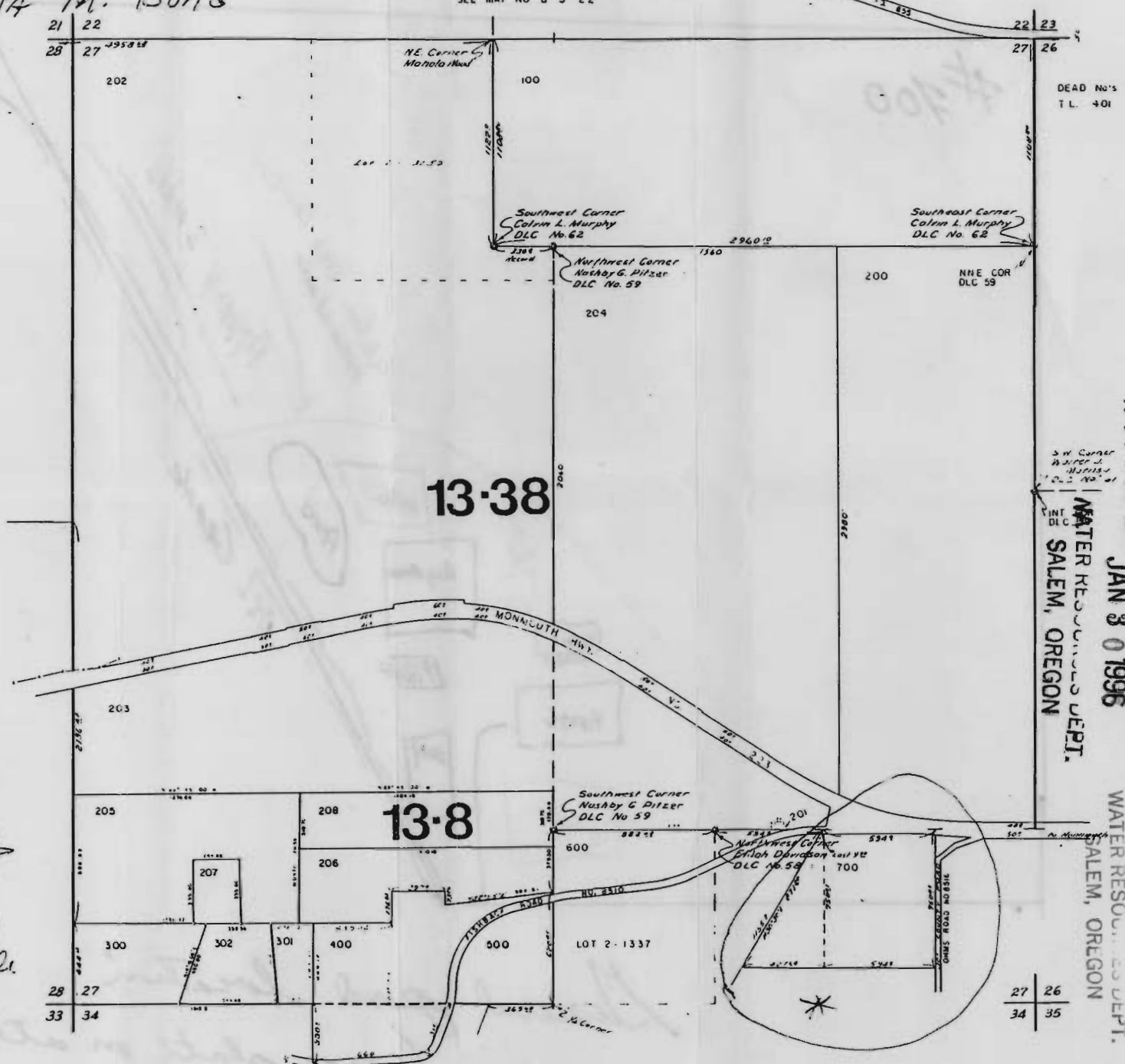
SCALE 1:9600



SEE MAP NO B 5 28

Application No. R-80453  
Permit No. 71991

CERTIFICATE NO.



DEAD No's  
T.L. 401

SW Corner  
Nashby G. Dizer  
DLC No. 59

WATER RESOURCES DEPT.  
SALEM, OREGON

JAN 30 1996

WATER RESOURCES DEPT.  
SALEM, OREGON

SEE MAP NO B 5 22

DEC 30 1994

21 22  
28 27

27 26  
34 35

SEE MAP NO B 5 34

Platt  
see pond location on other side of this  
↓

RECEIVED

RECEIVED