

NW COR.
DLC 54

SECTION 32 T.27S. R.7W. W.M. DOUGLAS COUNTY

REVISED ON
7-20-94

JUN 28 1995

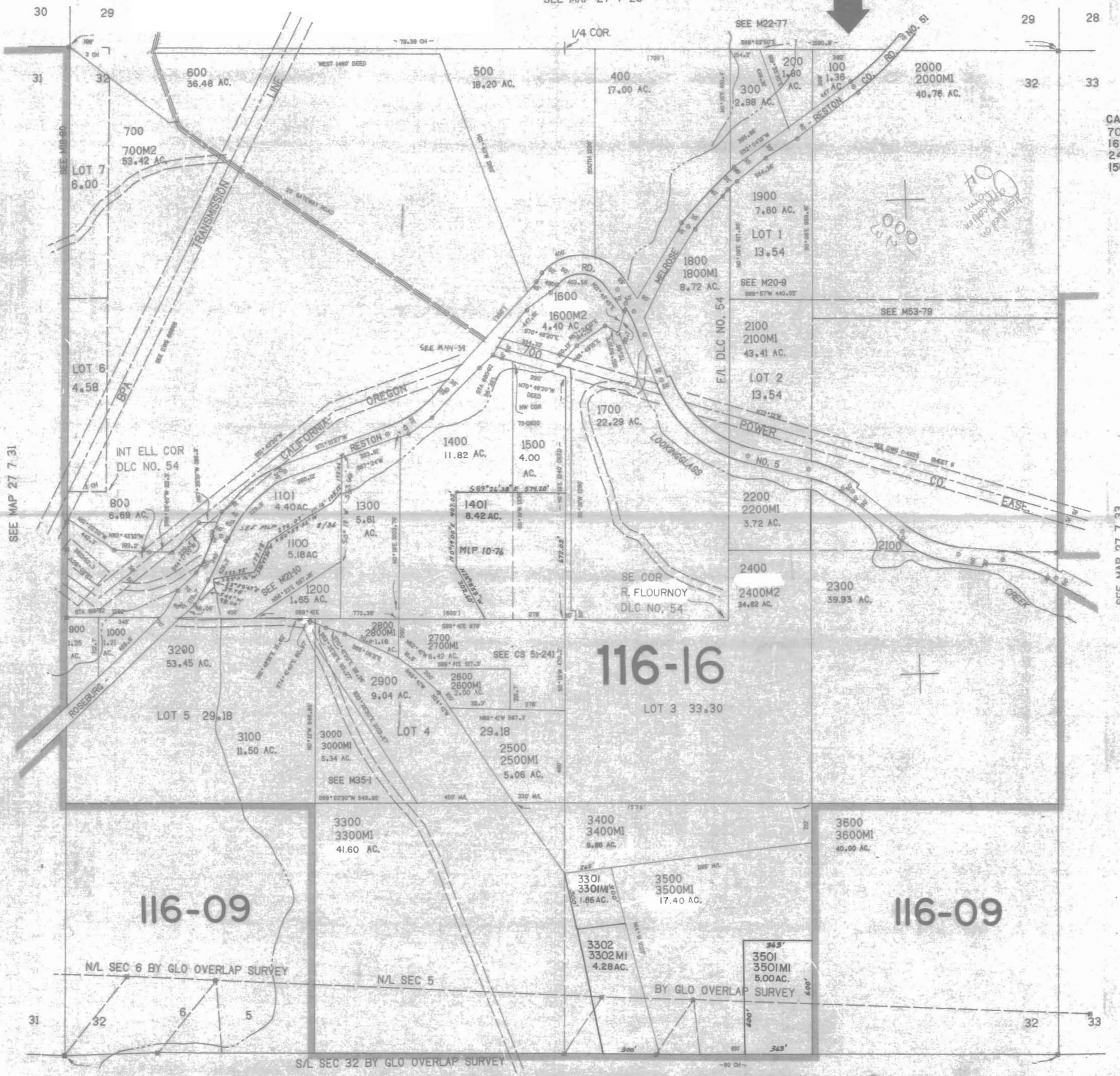
27 7 32

THIS MAP WAS PREPARED FOR
ASSESSMENT PURPOSE ONLY.

1"=400'

SEE MAP 27 7 29

R-80496
"CERTIFICATE NO. 72020"



CANCELLED NO'S
700MI
1600MI
2400MI
150I

SEE MAP 27 7 31

SEE MAP 27 7 33

565.000

SEE MAP 28 7 6

SEE MAP 28 7 5

Application No. R-80496
Permit No.

27 7 32