

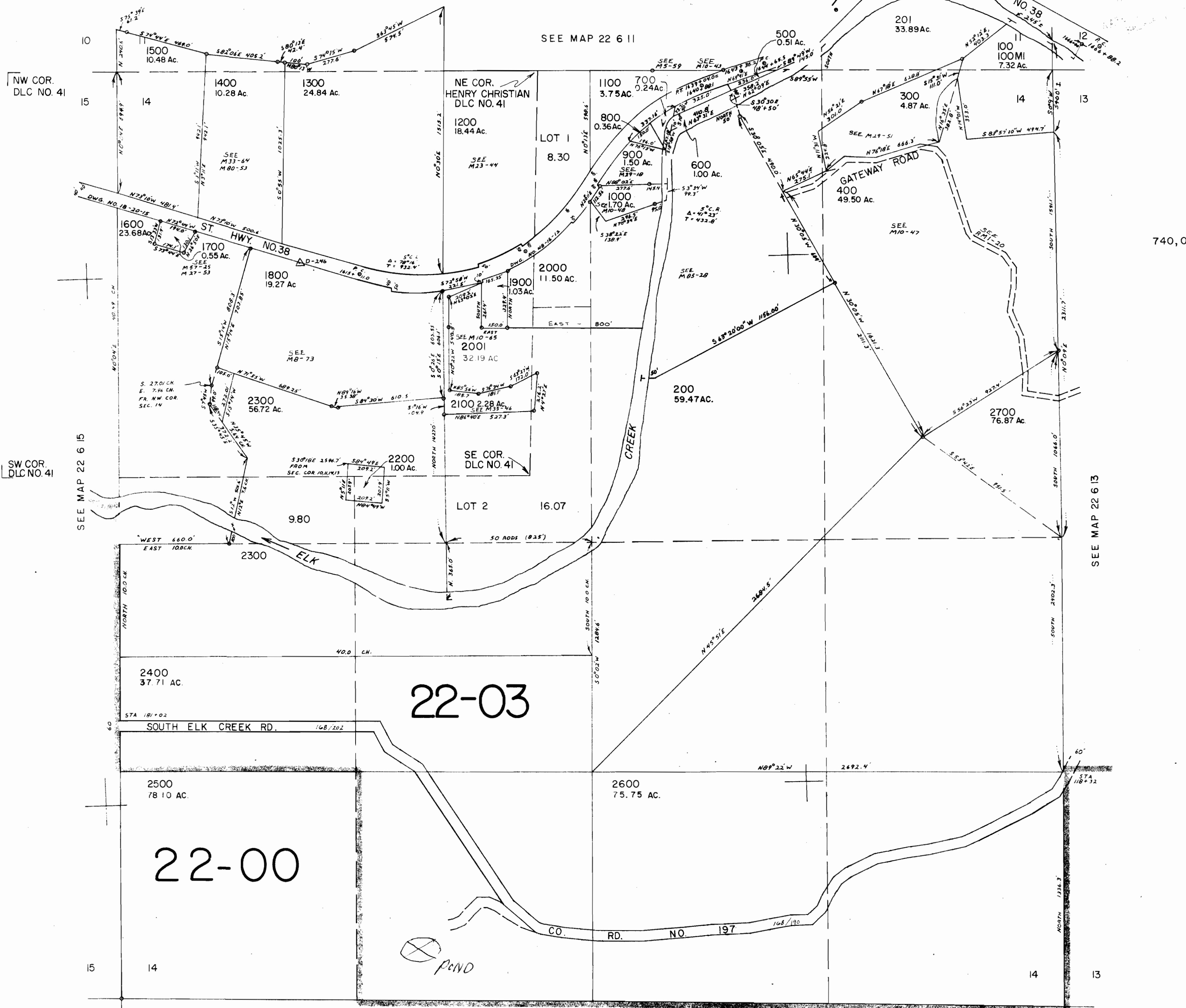
THIS MAP WAS PREPARED FOR ASSESSMENT PURPOSE ONLY.

SECTION 14 T.22S. R.6W. W.M. DOUGLAS COUNTY

Application No. R-80501 Permit No.

22 6 14

1"=400'



"CERTIFICATE NO. 72025" SEE MAP 22 6 R-80501

22 6 14