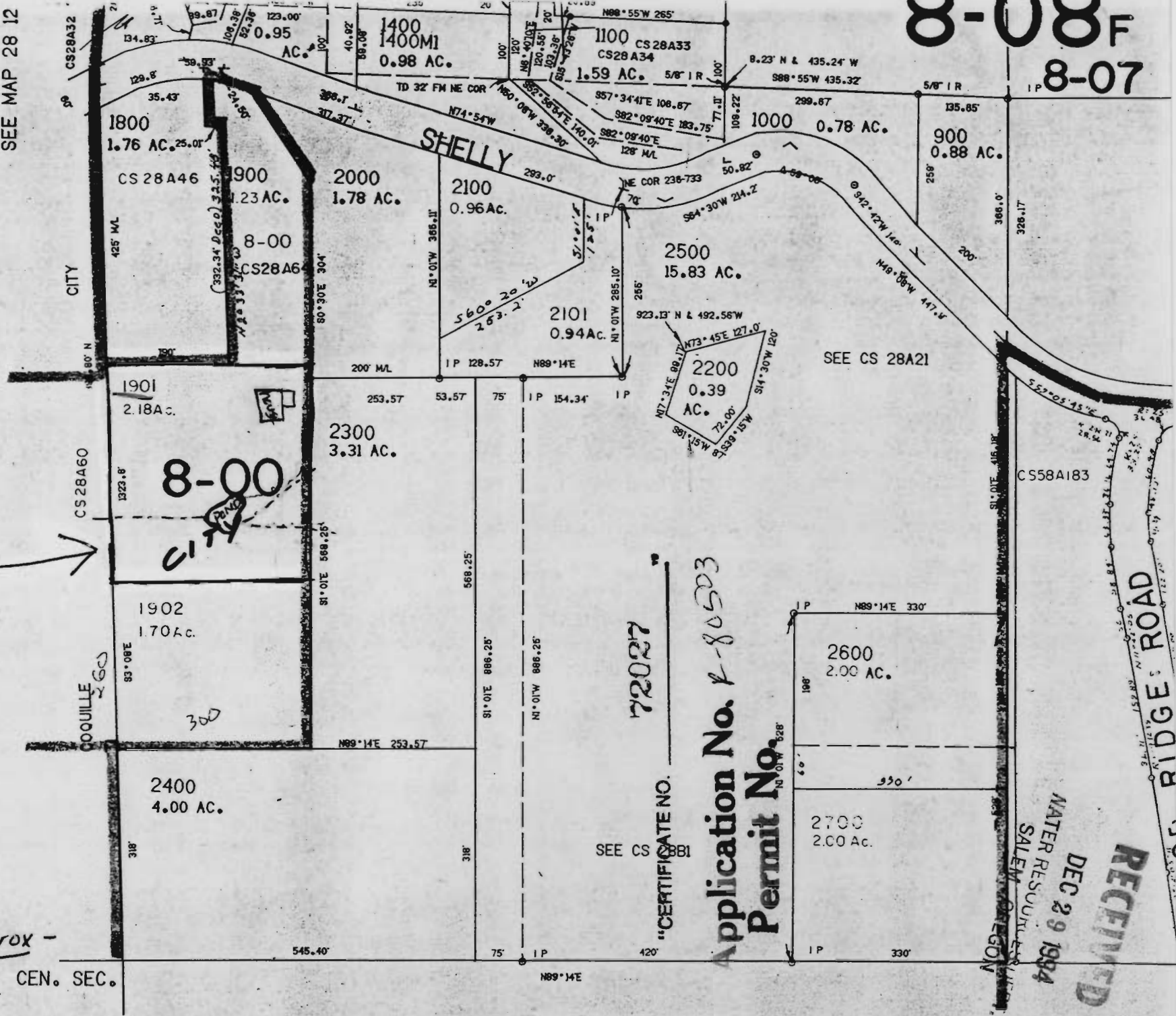


Earl & Karen Holley
 P.O. Box 397
 Cogville, OR 97143

SEE MAP 28 12

8-08F
 8-07



Scale is approx -
 $\frac{3}{4}'' = 200'$ CEN. SEC.

72027
 Application No. 8-80503
 Permit No. 828

SEE CS 28B1

SEE CS 28A21

RECEIVED
 DEC 29 1984
 WATER RESOURCES
 SALEM, OREGON

SEE MAP 28 12 6D