

This map was prepared for assessment purpose only.

NW1/4 SEC. 23 T.26S. R 5 W. WM.
DOUGLAS COUNTY

REVISED ON
10-25-93

26 5 23B

1" = 200'

Application No. *2-86508*
Permit No.

"CERTIFICATE NO. 72029"

ROBERT GLASSER
1381 Echo Dr
ROSEBURG OR

SEE MAP 26 5 14

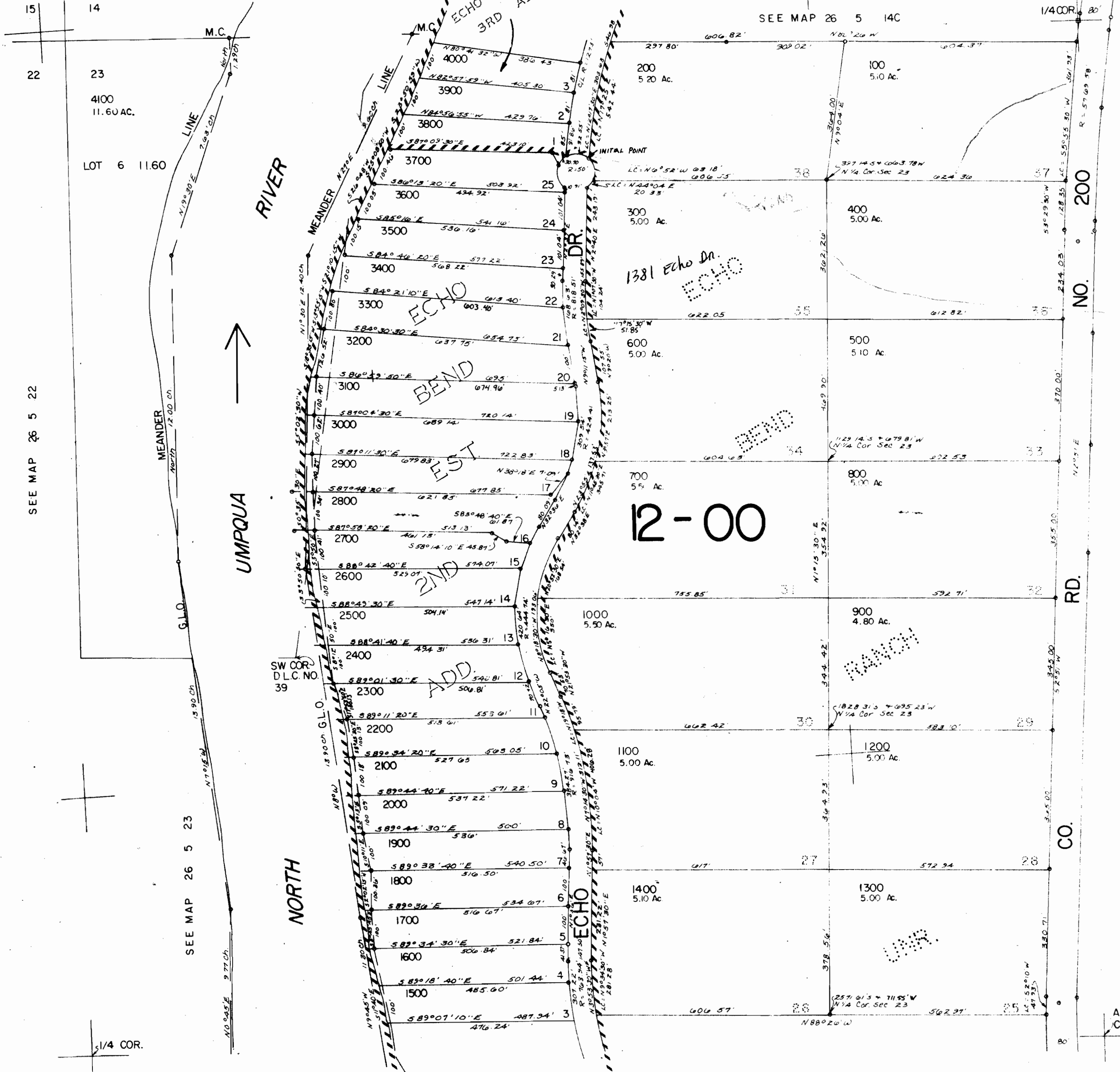
SEE MAP 26 5 14C

1/4 COR. 80'

RECEIVED

DEC 10 1994

CLERK OF COURTS DEPT.
SALEM, OREGON



SEE MAP 26 5 22

SEE MAP 26 5 23

SEE MAP 26 5 23C

NO. 200

RD.

CO.

26 5 23B

SEE MAP 26 5 23A

606

APPROX. GEN. SEC.

1,266,000