

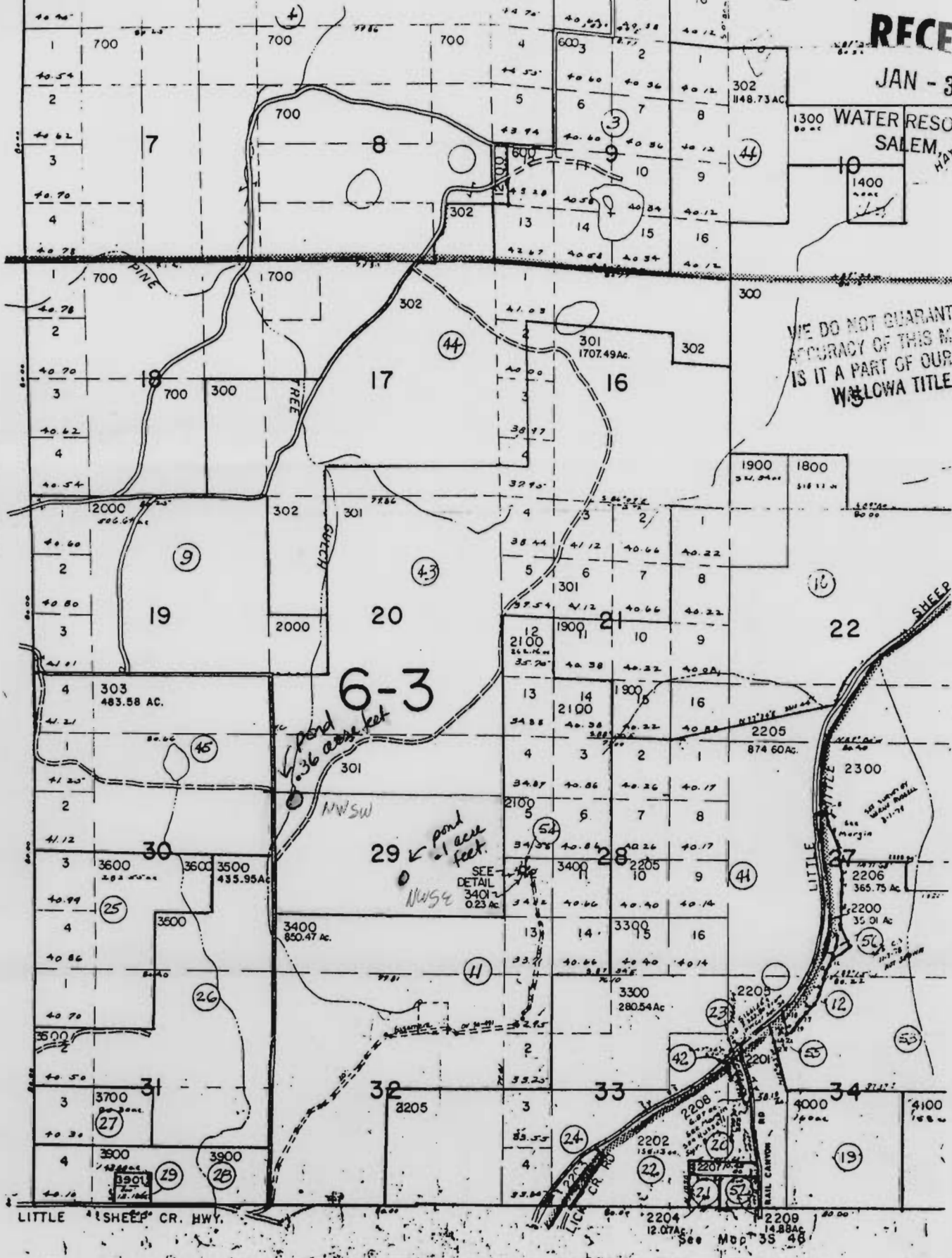
RECEIVED

JAN - 3 1995

WATER RESOURCES DEPT
SALEM, OREGON

WE DO NOT GUARANTEE THE
ACCURACY OF THIS MAP AND
IS IT A PART OF OUR RECORD
WILLOWA TITLE CO.

See Map 2S 45

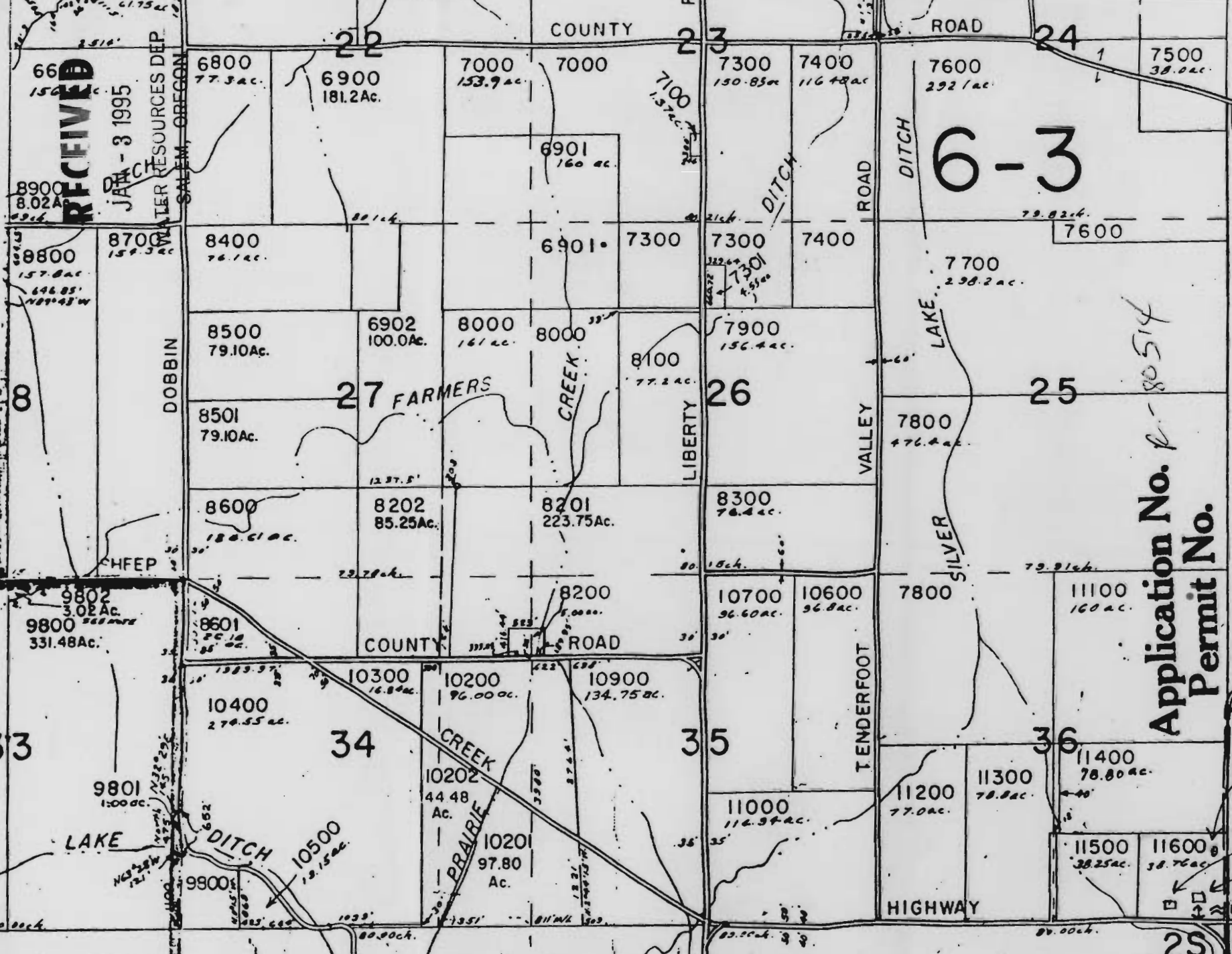


Township 2 South
 Range 46 East, Willamette Meridian
 Section 29: S1/2 N1/2 S1/2
 Tax Identification #: 2546 Part of

2546
 Application No. R-80514
 Permit No.
 TR # 301 - Ref # 3463

CERTIFICATE NO.

72035



RECEIVED
 JAN - 3 1995
 WATER RESOURCES DEPT.
 SALEM, OREGON

2601
 DETAIL -
 Sec. 17
 Beg S 617.33' f
 E 1283.64' From
 NW Cor. Sec. 17
 1. S 46° 46' E 1031'
 2. S 0° 23' E 410'
 3. N 89° 27' E 750'
 4. N 17° 23' W 740'
 5. N 65° 40' W 217'
 6. S 75° 56' W 10.50'

INSERT
 Sec. 16
 1" = 1000'



Application No. R-80514
 Permit No.

25' 45'
 & INDEX
 72035

CERTIFICATE NO.

8900 8.02 Ac.
 8800 157.8 Ac.
 8700 159.3 Ac.

9802 3.02 Ac.
 9800 331.48 Ac.
 8601 20.18 Ac.

9801 15.00 Ac.
 9800 19.15 Ac.

8400 76.1 Ac.
 8500 79.10 Ac.
 8501 79.10 Ac.
 8600 180.61 Ac.

8800 157.8 Ac.
 8700 159.3 Ac.

8900 8.02 Ac.
 8800 157.8 Ac.
 8700 159.3 Ac.

6800 77.3 Ac.
 6900 181.2 Ac.

8400 76.1 Ac.

8500 79.10 Ac.

8501 79.10 Ac.

8600 180.61 Ac.

9802 3.02 Ac.
 9800 331.48 Ac.

8601 20.18 Ac.

10400 270.55 Ac.

10300 16.84 Ac.

10200 96.00 Ac.

10202 44.48 Ac.

10201 97.80 Ac.

10500 19.15 Ac.

10300 16.84 Ac.

10200 96.00 Ac.

7000 153.9 Ac.

6901 160 Ac.

6901 160 Ac.

8000 161 Ac.

8000 161 Ac.

8201 223.75 Ac.

8202 85.25 Ac.

8200 7.00 Ac.

10300 16.84 Ac.

10200 96.00 Ac.

10202 44.48 Ac.

10201 97.80 Ac.

10500 19.15 Ac.

10300 16.84 Ac.

10200 96.00 Ac.

7300 150.85 Ac.

7300 150.85 Ac.

7300 150.85 Ac.

7900 156.4 Ac.

7900 156.4 Ac.

8300 70.4 Ac.

10700 96.60 Ac.

10600 96.8 Ac.

11000 116.94 Ac.

11200 77.0 Ac.

11300 78.8 Ac.

11400 78.80 Ac.

11500 38.25 Ac.

11600 38.76 Ac.

11700 38.76 Ac.

7400 116.48 Ac.

7400 116.48 Ac.

7400 116.48 Ac.

7400 116.48 Ac.

7400 116.48 Ac.

7400 116.48 Ac.

7400 116.48 Ac.

7400 116.48 Ac.

7400 116.48 Ac.

7400 116.48 Ac.

7400 116.48 Ac.

7400 116.48 Ac.

7400 116.48 Ac.

7400 116.48 Ac.

7400 116.48 Ac.

7600 292.1 Ac.

7600 292.1 Ac.

7600 292.1 Ac.

7600 292.1 Ac.

7600 292.1 Ac.

7600 292.1 Ac.

7600 292.1 Ac.

7600 292.1 Ac.

7600 292.1 Ac.

7600 292.1 Ac.

7600 292.1 Ac.

7600 292.1 Ac.

7600 292.1 Ac.

7600 292.1 Ac.

7600 292.1 Ac.

7500 38.0 Ac.

7500 38.0 Ac.

7500 38.0 Ac.

7500 38.0 Ac.

7500 38.0 Ac.

7500 38.0 Ac.

7500 38.0 Ac.

7500 38.0 Ac.

7500 38.0 Ac.

7500 38.0 Ac.

7500 38.0 Ac.

7500 38.0 Ac.

7500 38.0 Ac.

7500 38.0 Ac.

7500 38.0 Ac.

7700 258.2 Ac.

7700 258.2 Ac.

7700 258.2 Ac.

7700 258.2 Ac.

7700 258.2 Ac.

7700 258.2 Ac.

7700 258.2 Ac.

7700 258.2 Ac.

7700 258.2 Ac.

7700 258.2 Ac.

7700 258.2 Ac.

7700 258.2 Ac.

7700 258.2 Ac.

7700 258.2 Ac.

7700 258.2 Ac.

7800 476.4 Ac.

7800 476.4 Ac.

7800 476.4 Ac.

7800 476.4 Ac.

7800 476.4 Ac.

7800 476.4 Ac.

7800 476.4 Ac.

7800 476.4 Ac.

7800 476.4 Ac.

7800 476.4 Ac.

7800 476.4 Ac.

7800 476.4 Ac.

7800 476.4 Ac.

7800 476.4 Ac.

7800 476.4 Ac.

11100 160 Ac.

11100 160 Ac.

11100 160 Ac.

11100 160 Ac.

11100 160 Ac.

11100 160 Ac.

11100 160 Ac.

11100 160 Ac.

11100 160 Ac.

11100 160 Ac.

11100 160 Ac.

11100 160 Ac.

11100 160 Ac.

11100 160 Ac.

11100 160 Ac.