

RECEIVED

JUL - 5 1905

WATER RESOURCES DEPT.  
SALEM, OREGON

20 02 31

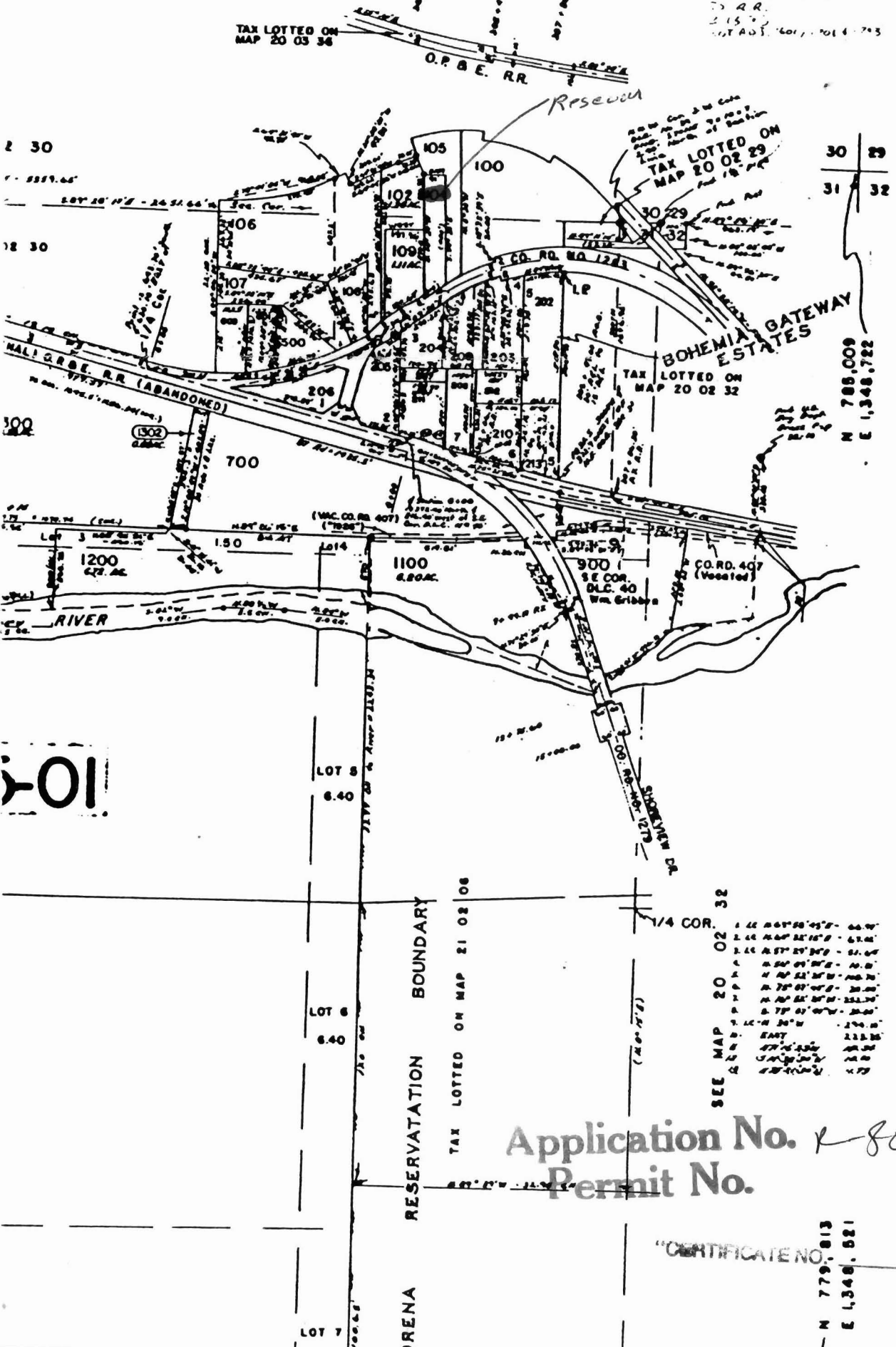
7-25-74  
400  
75 A.R.  
215  
NOT A.D.S. 601, 604, 713

INTY

TAX LOTTED ON  
MAP 20 03 36

TAX LOTTED ON  
MAP 20 02 29

TAX LOTTED ON  
MAP 20 02 32



30 29  
31 32

N 788,009  
E 1,348,722

103

LOT 8  
6.40

LOT 6  
6.40

LOT 7

RESERVATION BOUNDARY

TAX LOTTED ON MAP 21 02 06

1/4 COR.

SEE MAP 20 02 32

1.22	66°58'45" E	66.7'
2.12	66°58'15" E	67.0'
3.12	67°27'30" E	67.0'
4.04	69°30" E	67.0'
5.04	69°30" E	67.0'
6.75	69°30" E	67.0'
7.75	69°30" E	67.0'
8.75	69°30" E	67.0'
9.75	69°30" E	67.0'
10.75	69°30" E	67.0'
11.75	69°30" E	67.0'
12.75	69°30" E	67.0'
13.75	69°30" E	67.0'
14.75	69°30" E	67.0'
15.75	69°30" E	67.0'
16.75	69°30" E	67.0'
17.75	69°30" E	67.0'
18.75	69°30" E	67.0'
19.75	69°30" E	67.0'
20.75	69°30" E	67.0'
21.75	69°30" E	67.0'
22.75	69°30" E	67.0'
23.75	69°30" E	67.0'
24.75	69°30" E	67.0'
25.75	69°30" E	67.0'
26.75	69°30" E	67.0'
27.75	69°30" E	67.0'
28.75	69°30" E	67.0'
29.75	69°30" E	67.0'
30.75	69°30" E	67.0'
31.75	69°30" E	67.0'
32.75	69°30" E	67.0'

Application No. R-80751  
Permit No.

"CERTIFICATE NO.

72082

N 779,813  
E 1,348,521