

This map was prepared for assessment purpose only.

NW 1/4 SEC.32 T.2 S. R.45E. W.M.
WALLOWA COUNTY

1"=200'

CERTIFICATE NO. 72087 DEC 2 1994

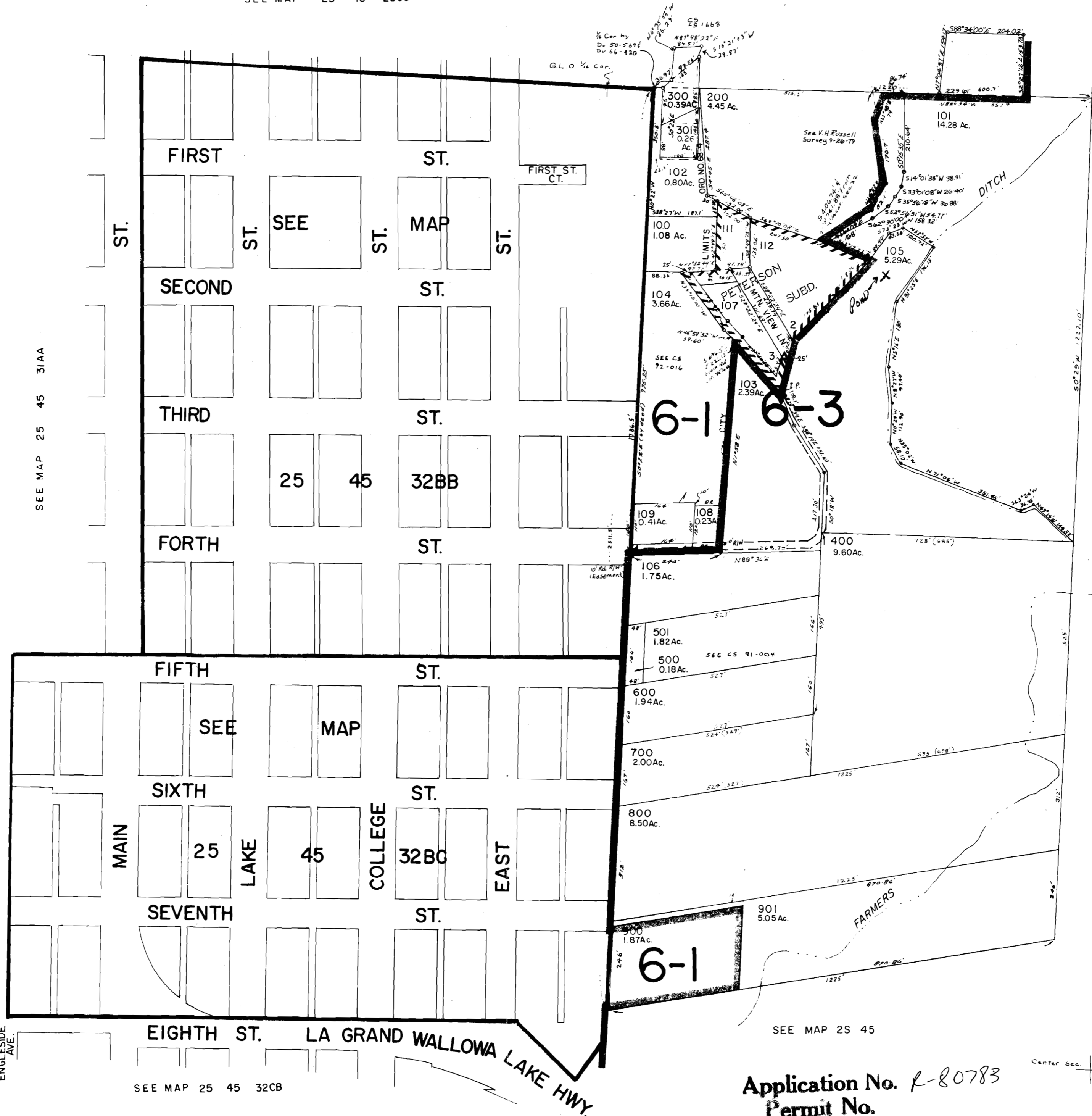
2S 45 32B
JOSEPH

WA. DEPT.
SALEM, OREGON

SEE MAP 25 45 29CC

SEE MAP 2S 45 29

CANCELLED NO'S
902
110
302
113



SEE MAP 25 45 31

SEE MAP 25 45 31AA

SEE MAP 2S 45

SEE MAP 2S 45

SEE MAP 25 45 32CB

Application No. R-80783
Permit No.

Center Sec. +

2S 45 32B
JOSEPH