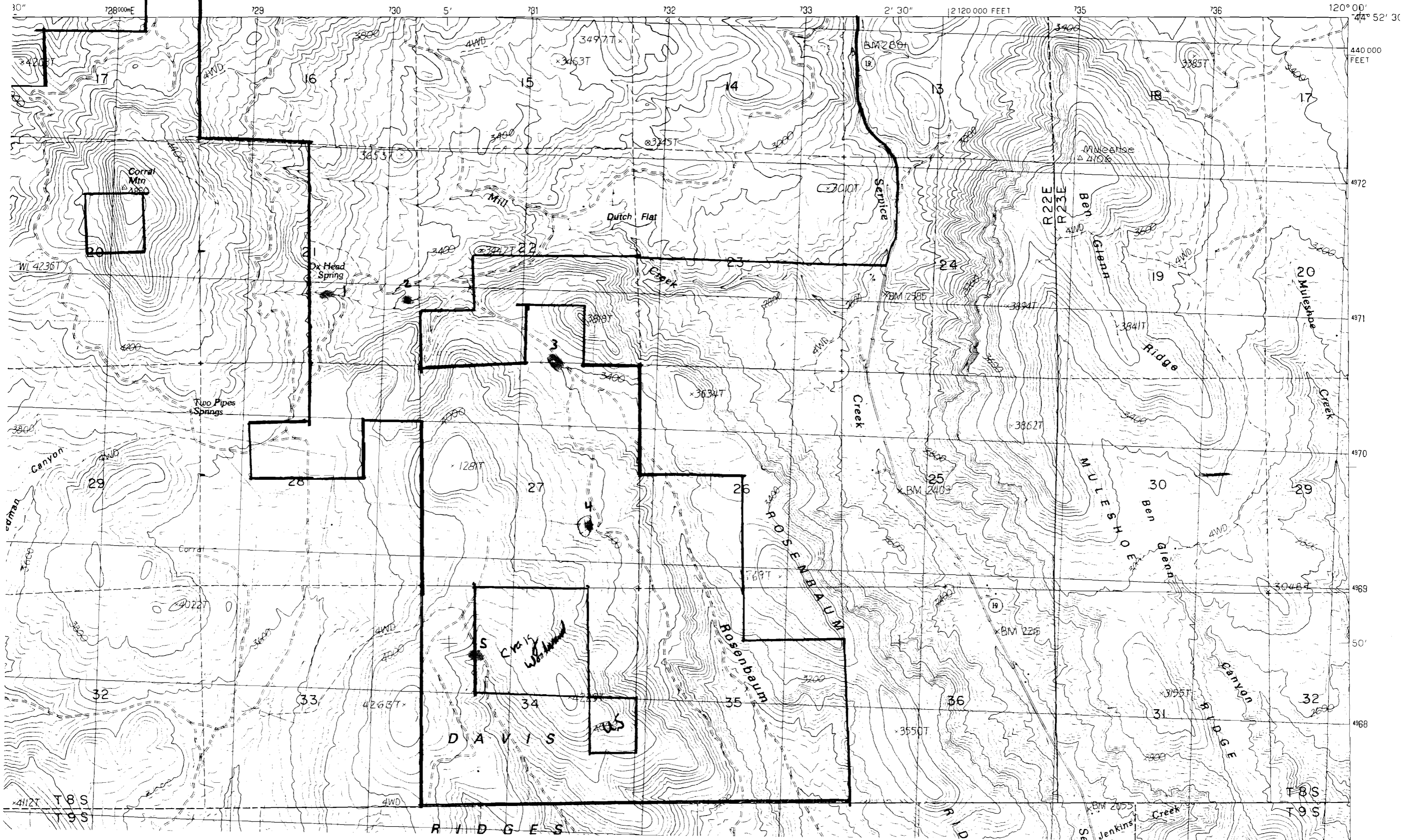


UNITED STATES  
PARTMENT OF THE INTERIOR  
GEOLOGICAL SURVEY

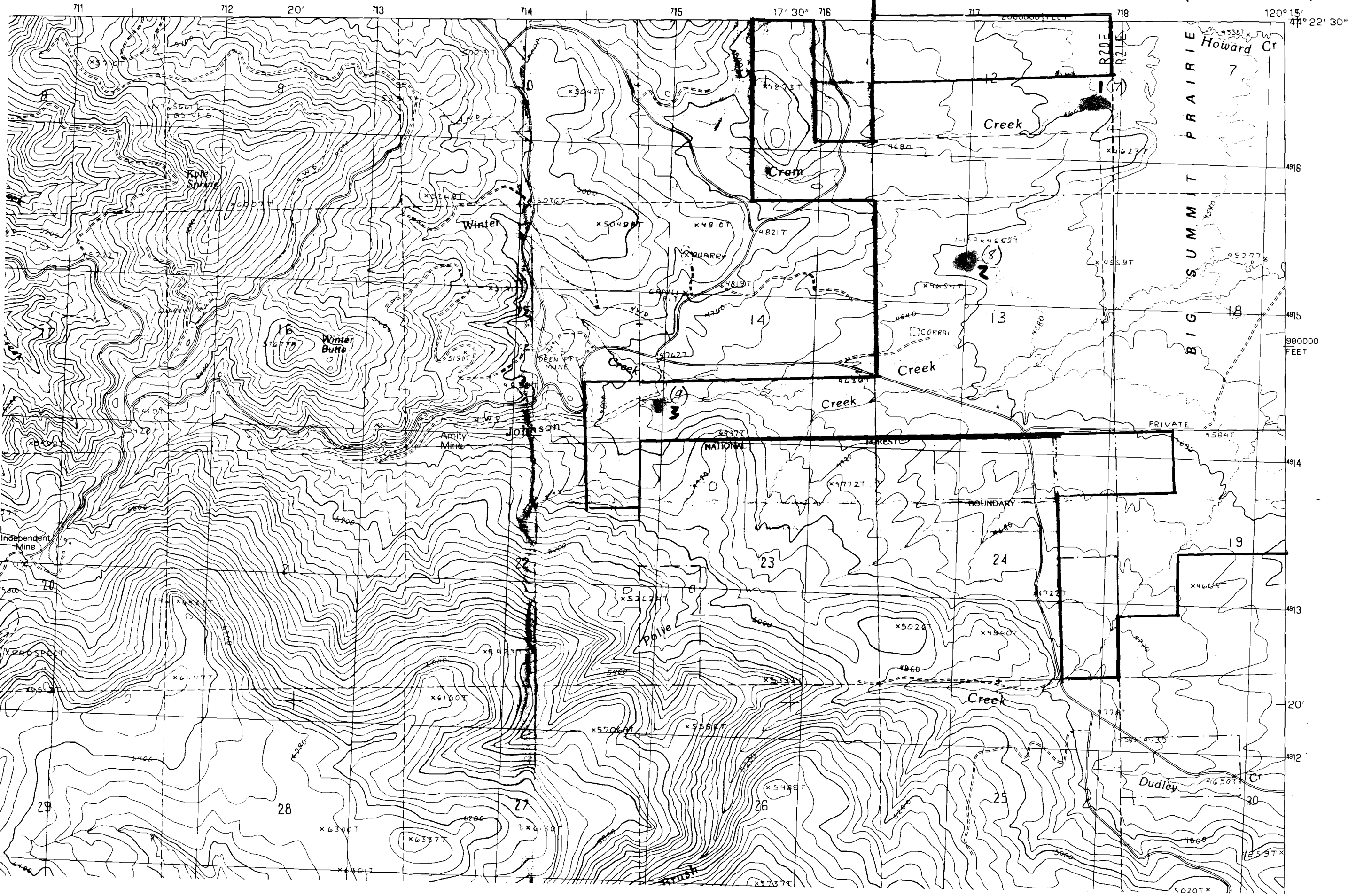
SERVICE CREEK QUADRANGLE  
OREGON—WHEELER CO.  
7.5 MINUTE SERIES (TOPOGRAPHIC)



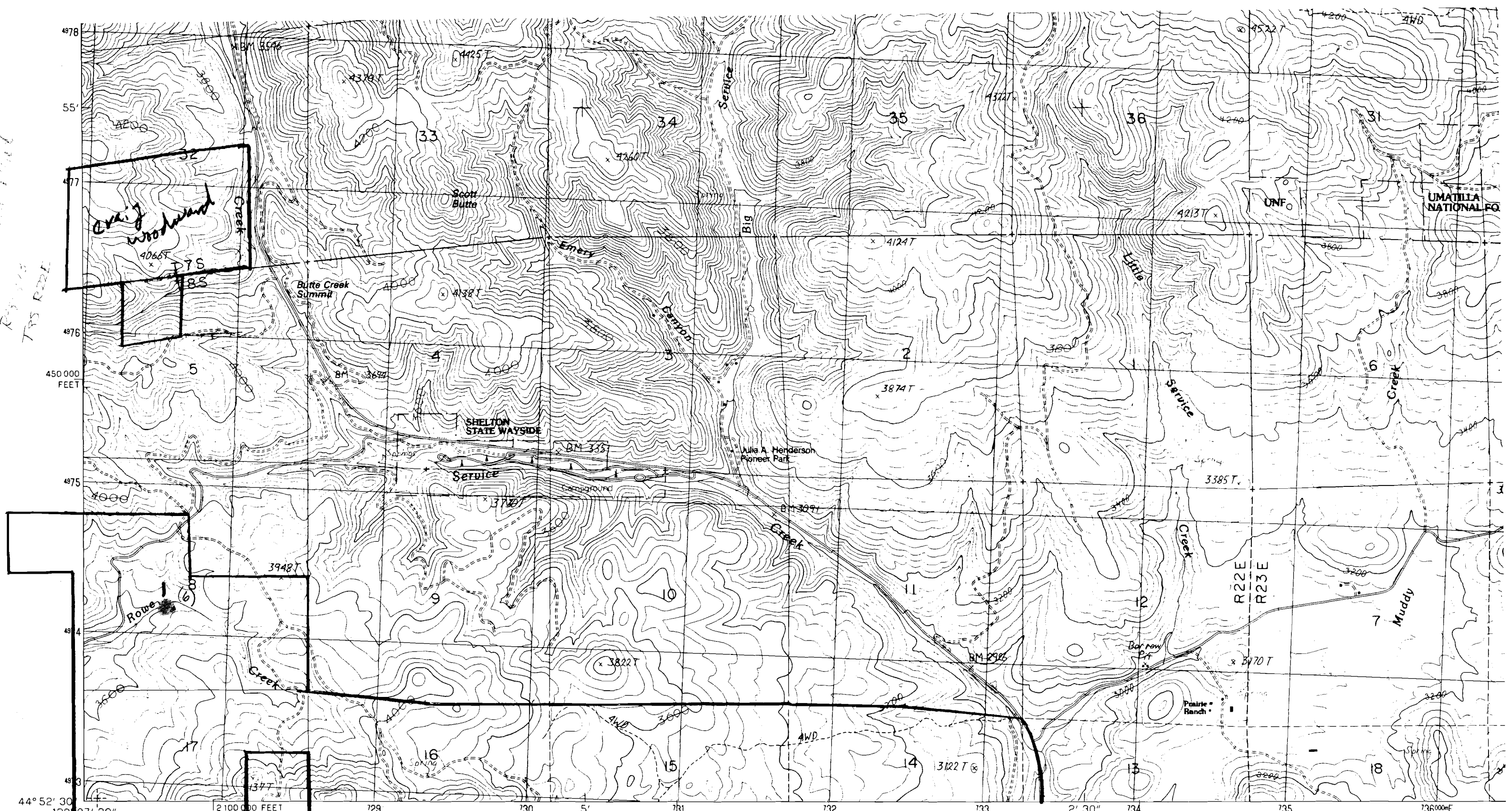
DR

T 145 R 20E

LOOKOUT MOUNTAIN QUADRANGLE  
OREGON-CROOK CO.  
7.5 MINUTE SERIES (TOPOGRAPHIC)

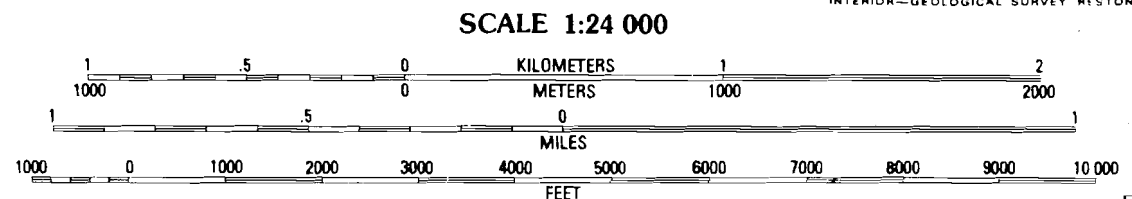


From Umatilla National Forest  
 Review  
 TBS ROAD



PRODUCED BY THE UNITED STATES GEOLOGICAL SURVEY  
 CONTROL BY USGS NOS/NOAA  
 COMPILED FROM AERIAL PHOTOGRAPHS TAKEN 1963  
 FIELD CHECKED 1966  
 LIMITED REVISION FROM AERIAL PHOTOGRAPHS TAKEN 1985  
 FIELD CHECKED 1986 MAP EDITED 1987  
 PROJECTION LAMBERT CONFORMAL CONIC  
 GRID: 1000-METER UNIVERSAL TRANSVERSE MERCATOR ZONE 10  
 10,000-FOOT STATE GRID TICKS OREGON NORTH ZONE  
 UTM GRID DECLINATION 2°05' EAST  
 1980 MAGNETIC NORTH DECLINATION 19°00' EAST  
 VERTICAL DATUM NATIONAL GEODETIC VERTICAL DATUM OF 1929  
 HORIZONTAL DATUM 1927 NORTH AMERICAN DATUM  
 To place on the predicted North American Datum of 1983,  
 move the projection lines as shown by dashed corner ticks  
 (20 meters north and 88 meters east)  
 There may be private inholdings within the boundaries of  
 any Federal and State Reservation shown on this map  
 Public Land Survey System is shown as published in 1966

**PROVISIONAL MAP**  
 Produced from original  
 manuscript drawings. Infor-  
 mation shown as of date of  
 field check.



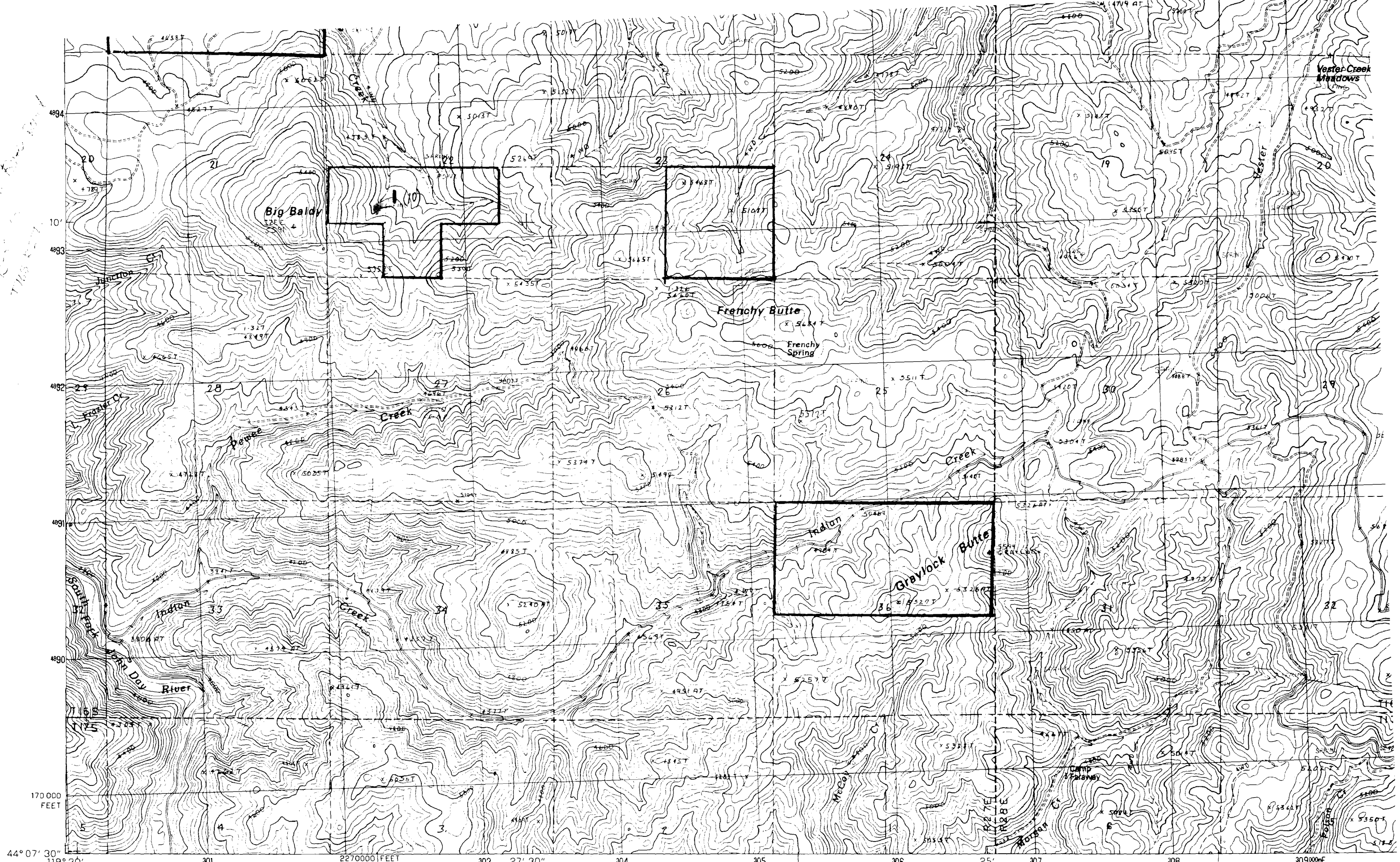
To convert meters to feet multiply by 3.2808  
 To convert feet to meters multiply by 0.3048



1	2	3	1 Fossil North
			2 Salmon Fork
			3 Lone Rock
4	5	4 Fossil South	
		5 Wheeler Point	
		6 Rowe Creek	
6	7	7 Service Creek	
		8 Massacre Mtn.	

**ROAD LEGEND**  
 Improved Road .....  
 Unimproved Road .....  
 Trail .....  
 Interstate Route (circle with red border)  
 U.S. Route (circle with black border)  
**KINZUA, (**  
**PROVISIONAL EI**

THIS IS THE CORRECT LOCATION



44° 07' 30" 119° 30' 301 2270000 FEET 303 27' 30" 304 305 306 25' 307 308 3090000E

PRODUCED BY THE UNITED STATES GEOLOGICAL SURVEY CONTROL BY USGS AND NOS/NOAA COMPILED FROM AERIAL PHOTOGRAPHS TAKEN 1984 FIELD CHECKED 1986 MAP EDITED 1990 PROJECTION LAMBERT CONFORMAL CONIC GRID: 1000-METER UNIVERSAL TRANSVERSE MERCATOR ZONE 11 10,000-FOOT STATE GRID TICKS

SCALE 1:24 000



ROAD LEGEND