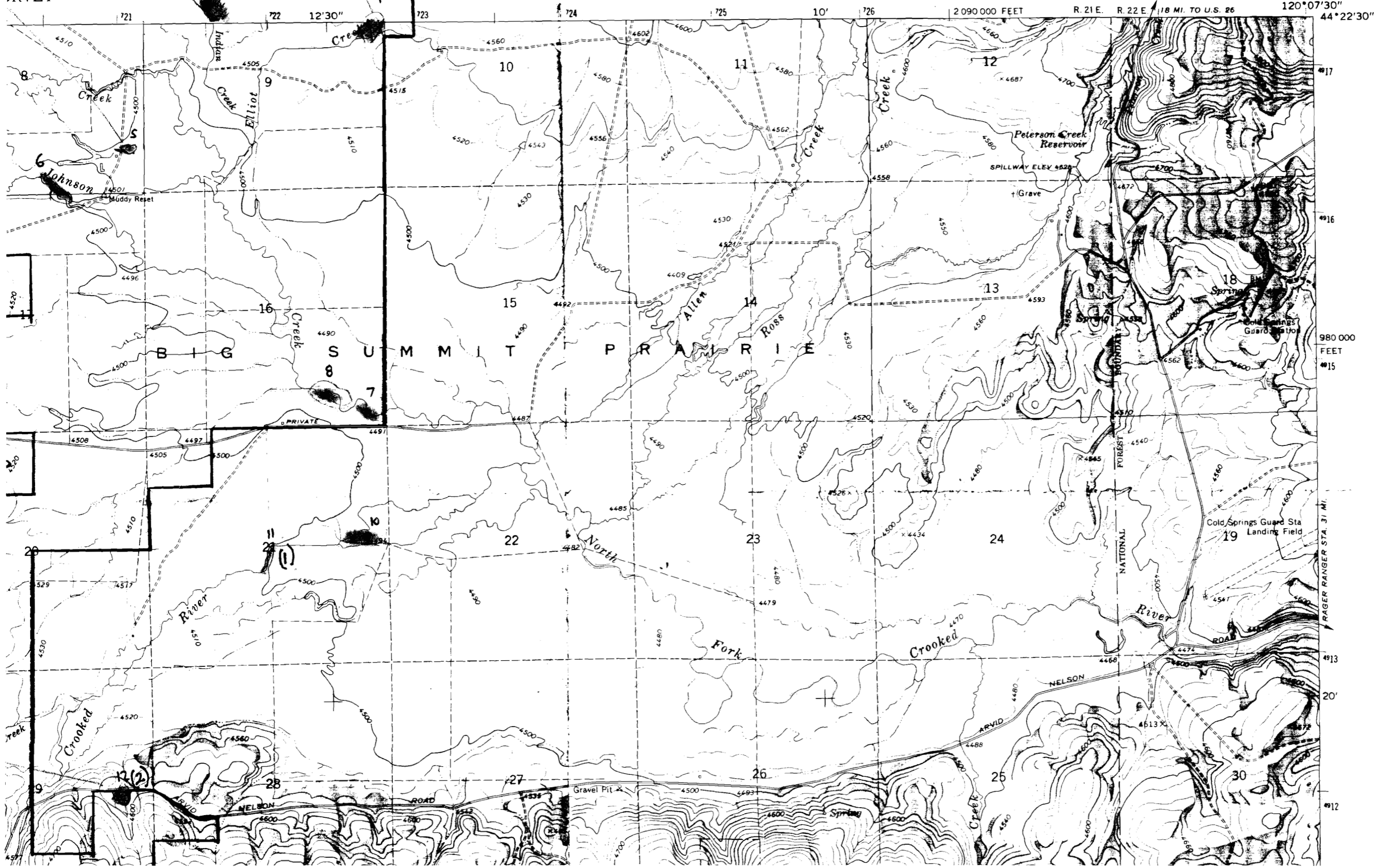


12-30-02

WILLIAMS PRAIRIE QUADRANGLE  
OREGON-CROOK CO.  
7.5 MINUTE SERIES (TOPOGRAPHIC)

WESTERN INTERIOR SURVEY

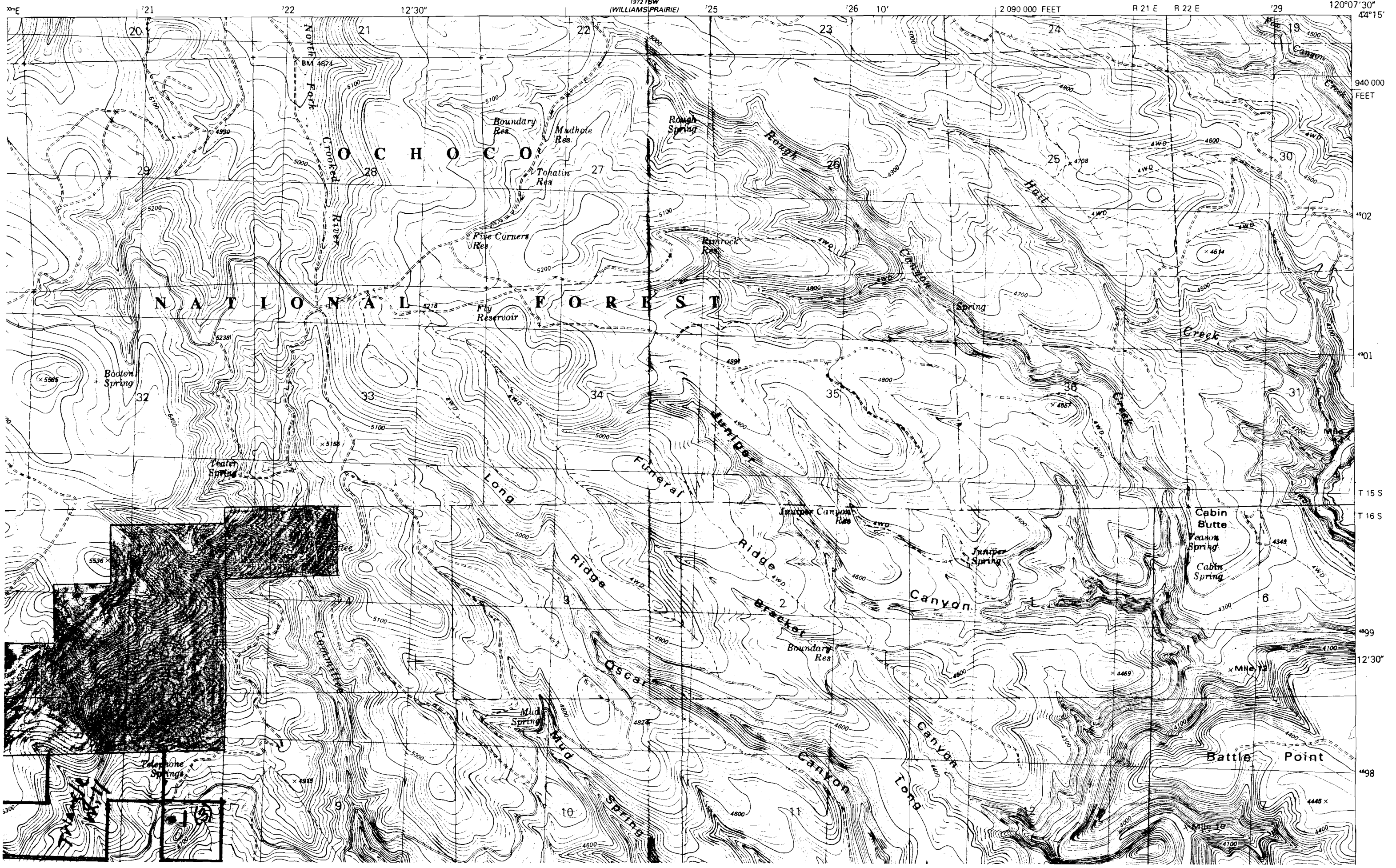


980 000  
FEET

RANGER RANGER STA. 31 MI.

R-80902

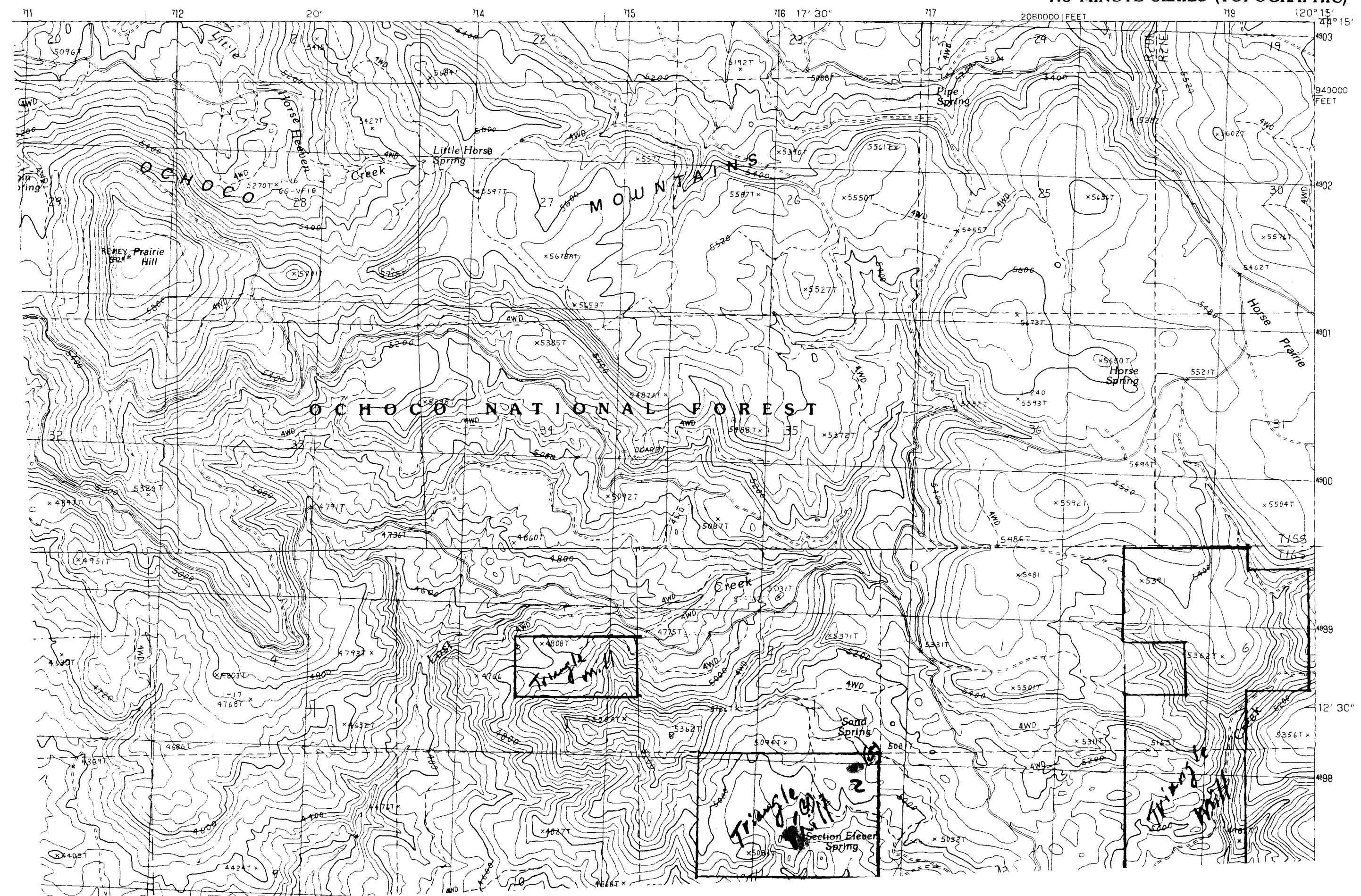
1972 SE  
(KEYS GREEN)



R-70902

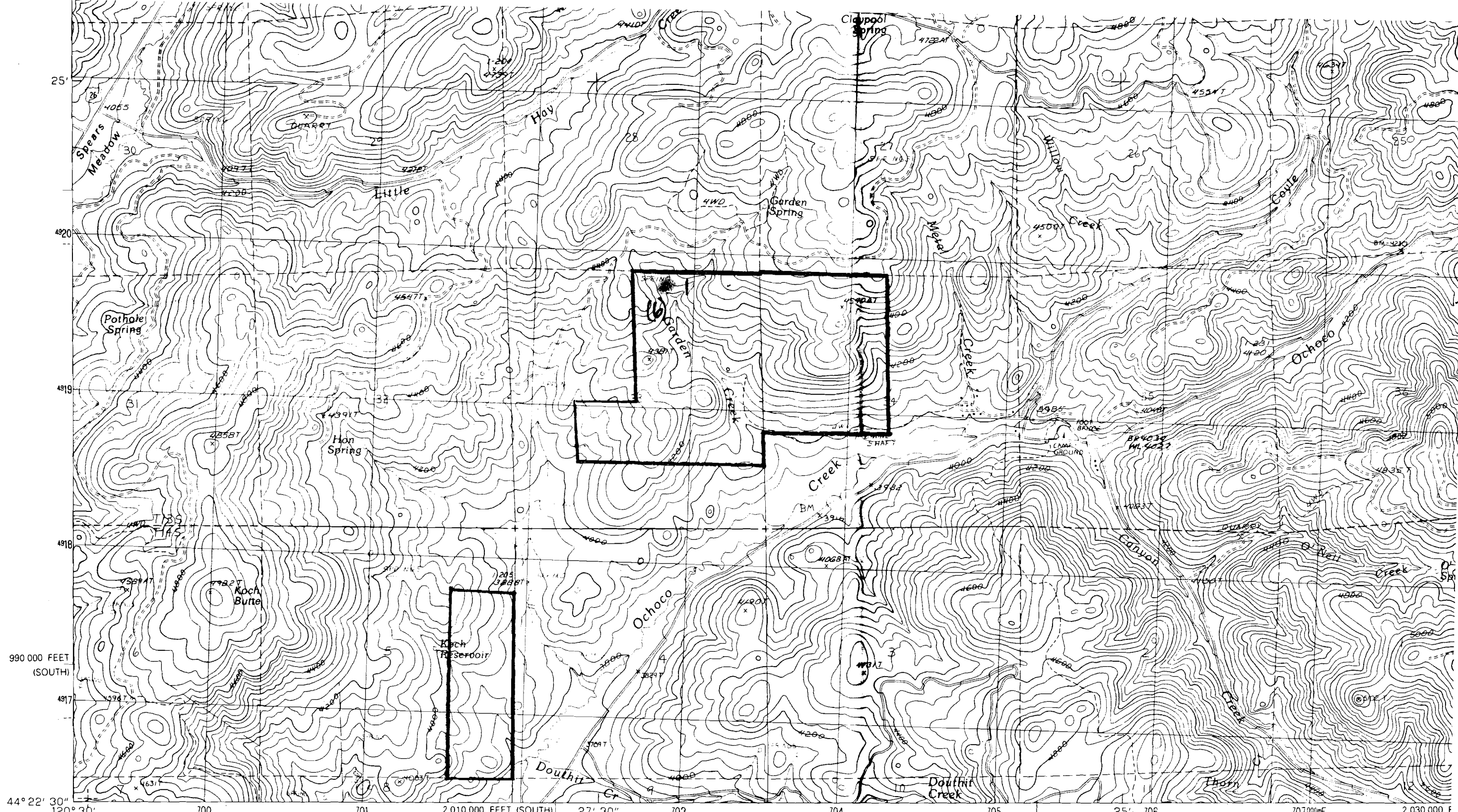
PRAIRIE HILL QUADRANGLE  
OREGON-CROOK CO.  
7.5 MINUTE SERIES (TOPOGRAPHIC)

R10R



2-80992

Wash. County

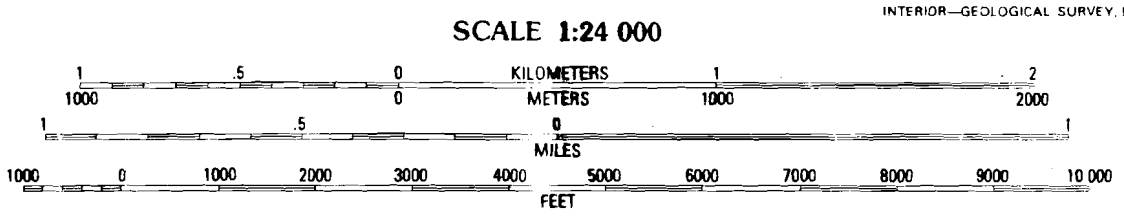


PRODUCED BY THE UNITED STATES GEOLOGICAL SURVEY CONTROL BY USGS AND NOS/NOAA COMPILED FROM AERIAL PHOTOGRAPHS TAKEN 1984 FIELD CHECKED 1986. MAP EDITED 1990 PROJECTION LAMBERT CONFORMAL CONIC GRID: 1000-METER UNIVERSAL TRANSVERSE MERCATOR ZONE 10 10,000-FOOT STATE GRID TICKS OREGON, SOUTH AND NORTH ZONES

UTM GRID DECLINATION 1°48' EAST  
1990 MAGNETIC NORTH DECLINATION 18°00' EAST  
VERTICAL DATUM NATIONAL GEODETIC VERTICAL DATUM OF 1929  
HORIZONTAL DATUM 1927 NORTH AMERICAN DATUM

To place on the predicted North American Datum of 1983, move the projection lines as shown by dashed corner ticks (20 meters north and 89 meters east)  
There may be private inholdings within the boundaries of any Federal or State reservations shown on this map

**PROVISIONAL MAP**  
Produced from original manuscript drawings. Information shown as of date of field check.



SCALE 1:24 000

CONTOUR INTERVAL 40 FEET

To convert meters to feet multiply by 3.2808  
To convert feet to meters multiply by .3048

THIS MAP COMPLIES WITH NATIONAL MAP ACCURACY STANDARDS FOR SALE BY U. S. GEOLOGICAL SURVEY DENVER, COLORADO 80225, OR RESTON, VIRGINIA 22092



1	2	3	1 Opal Mountain
			2 Stephenson Mtn.
			3 Lawson Mountain
4		5	4 Steins Pillar
			5 Ochoco Butte
			6 Cadle Butte
6	7	8	7 Gerow Butte
			8 Lookout Mountain

ADJOINING 7.5 QUADRANGLE NAMES

Improved R<sub>c</sub> Unimproved Trail

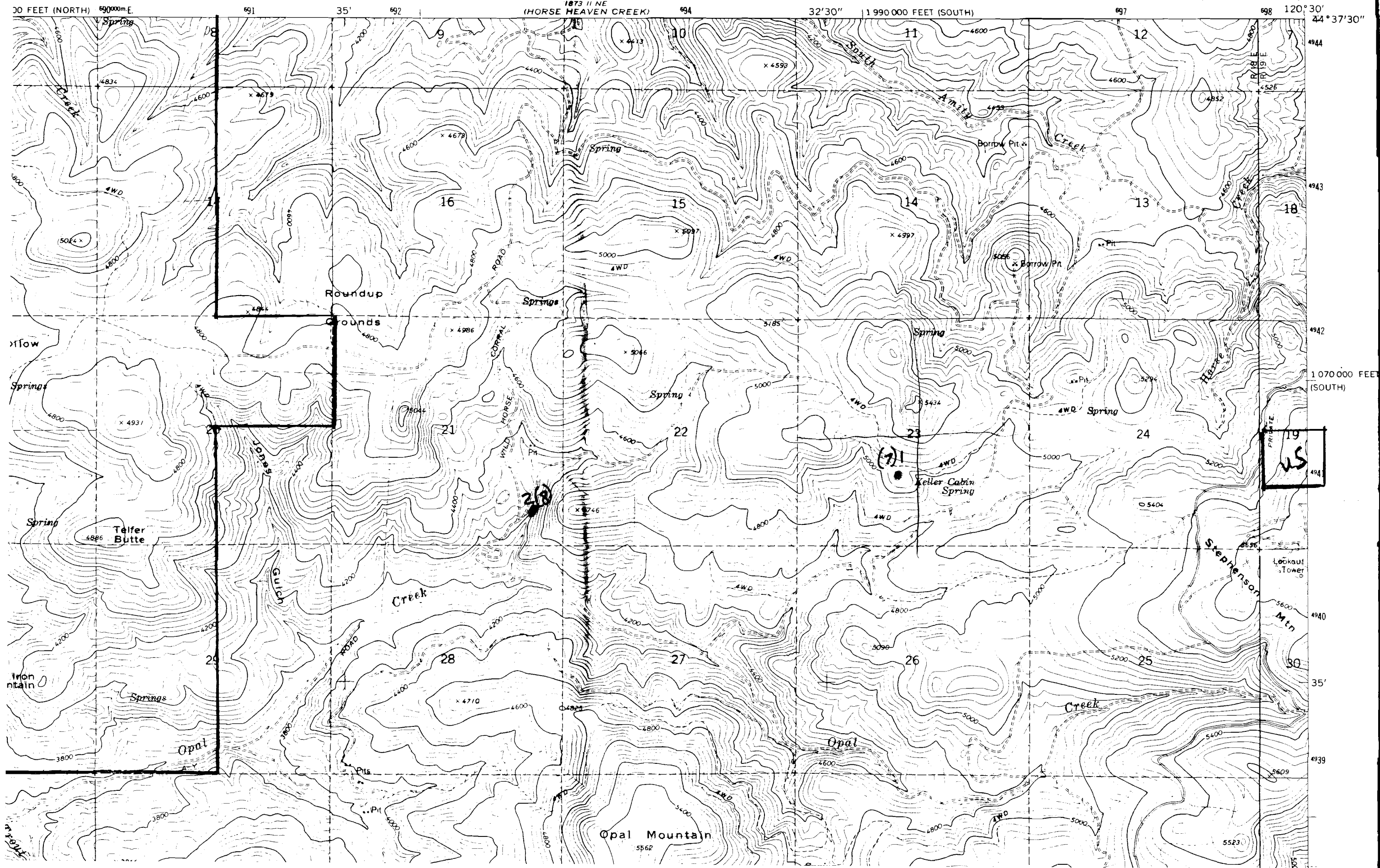
Interst<sub>i</sub>

R-80902

OPAL MOUNTAIN QUADRANGLE  
OREGON  
7.5 MINUTE SERIES (TOPOGRAPHIC)

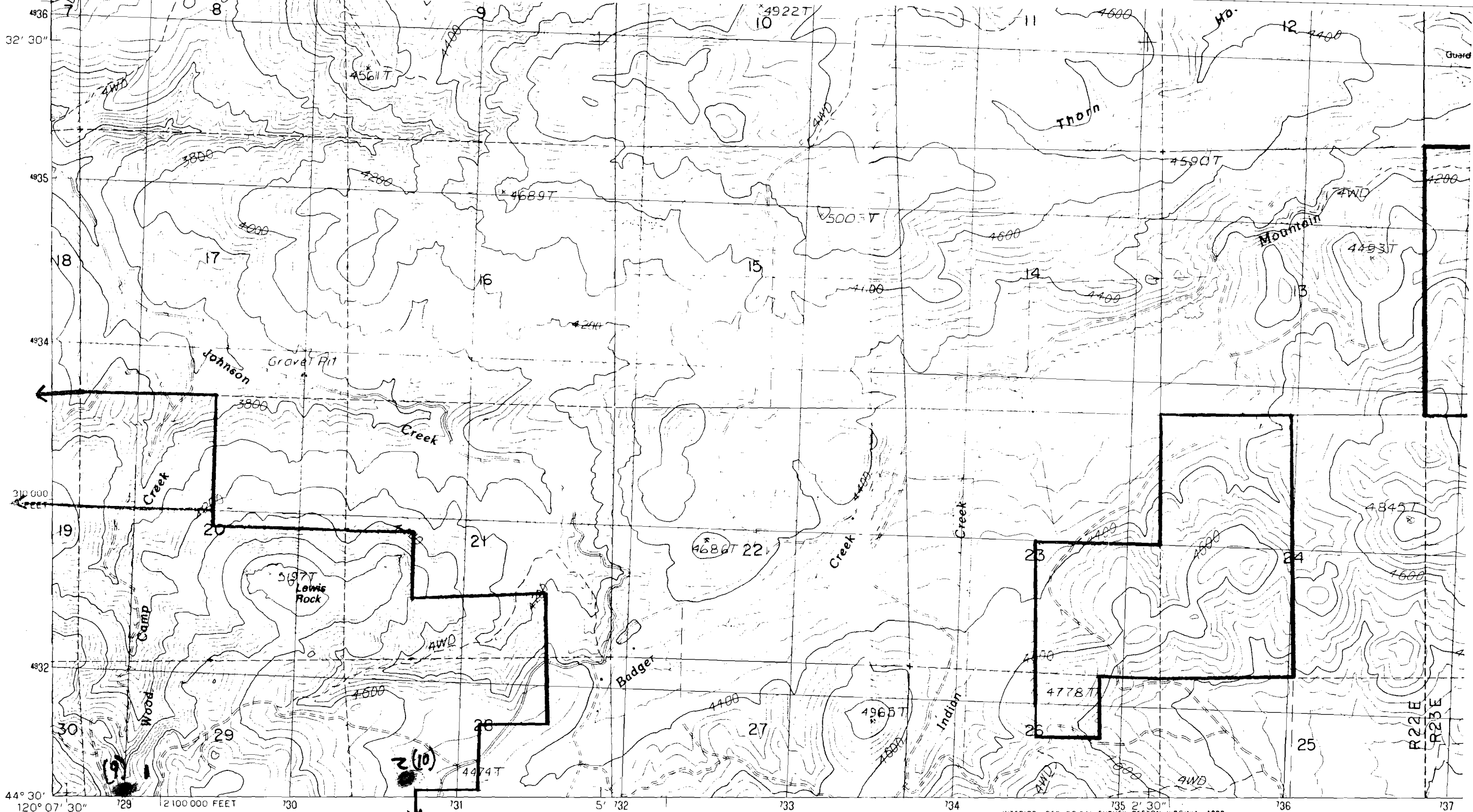
1973 III NW  
(SANDROCK MTN.)

STATES  
THE INTERIOR  
SURVEY



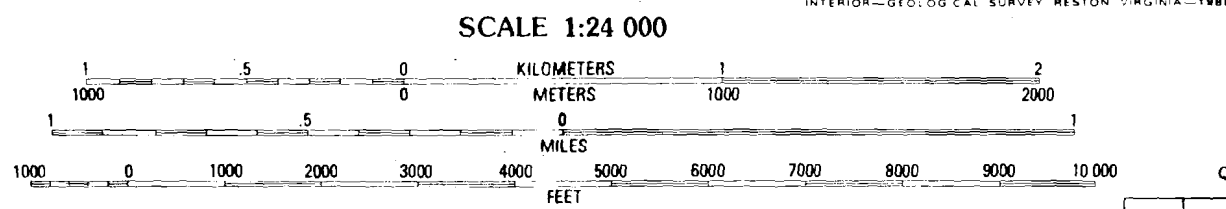
R-80902

Kearney Mts. Dist.



PRODUCED BY THE UNITED STATES GEOLOGICAL SURVEY  
 CONTROL BY USGS, NOS/NOAA, STATE OF OREGON  
 COMPILED FROM AERIAL PHOTOGRAPHS TAKEN 1963  
 FIELD CHECKED 1966  
 LIMITED REVISION FROM AERIAL PHOTOGRAPHS TAKEN 1985  
 FIELD CHECKED 1986. MAP EDITED 1988  
 PROJECTION LAMBERT CONFORMAL CONIC  
 GRID: 1000-METER UNIVERSAL TRANSVERSE MERCATOR ZONE 10  
 10,000-FOOT STATE GRID TICKS OREGON NORTH ZONE  
 UTM GRID DECLINATION 204 EAST  
 1980 MAGNETIC NORTH DECLINATION 19°00 EAST  
 VERTICAL DATUM NATIONAL GEODETIC VERTICAL DATUM OF 1929  
 HORIZONTAL DATUM 1927 NORTH AMERICAN DATUM  
 To place on the predicted North American Datum of 1983,  
 move the projection lines as shown by dashed corner ticks  
 (19 meters north and 88 meters east)  
 There may be private inholdings within the boundaries of  
 any Federal and State Reservation shown on this map  
 Public Land Survey System is shown as published in 1966  
 and verified or supplemented in 1986  
 No distinction made between houses, barns, and other buildings

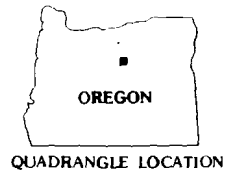
**PROVISIONAL MAP**  
 Produced from original  
 manuscript drawings. Infor-  
 mation shown as of date of  
 field check. T



SCALE 1:24 000  
 CONTOUR INTERVAL 40 FEET  
 SUPPLEMENTARY CONTOUR INTERVAL 20 FEET

To convert meters to feet multiply by 3.2808  
 To convert feet to meters multiply by 0.3048

THIS MAP COMPLIES WITH NATIONAL MAP ACCURACY STANDARDS  
 FOR SALE BY U. S. GEOLOGICAL SURVEY, DENVER, COLORADO 80225, OR RESTON, VIRGINIA 22092



QUADRANGLE LOCATION

1	2	3	1 Sutton Mtn.
			2 Toney Butte
			3 Richmond
4		5	4 Mitchell
			5 Frog Hollow
			6 Mt. Pisgah
			7 Peterson Point
6	7	8	8 Derr Meadows

- Improved Road
- Unimproved Road
- Trail
- Interstate

ADJOINING 7.5' QUADRANGLE NAMES