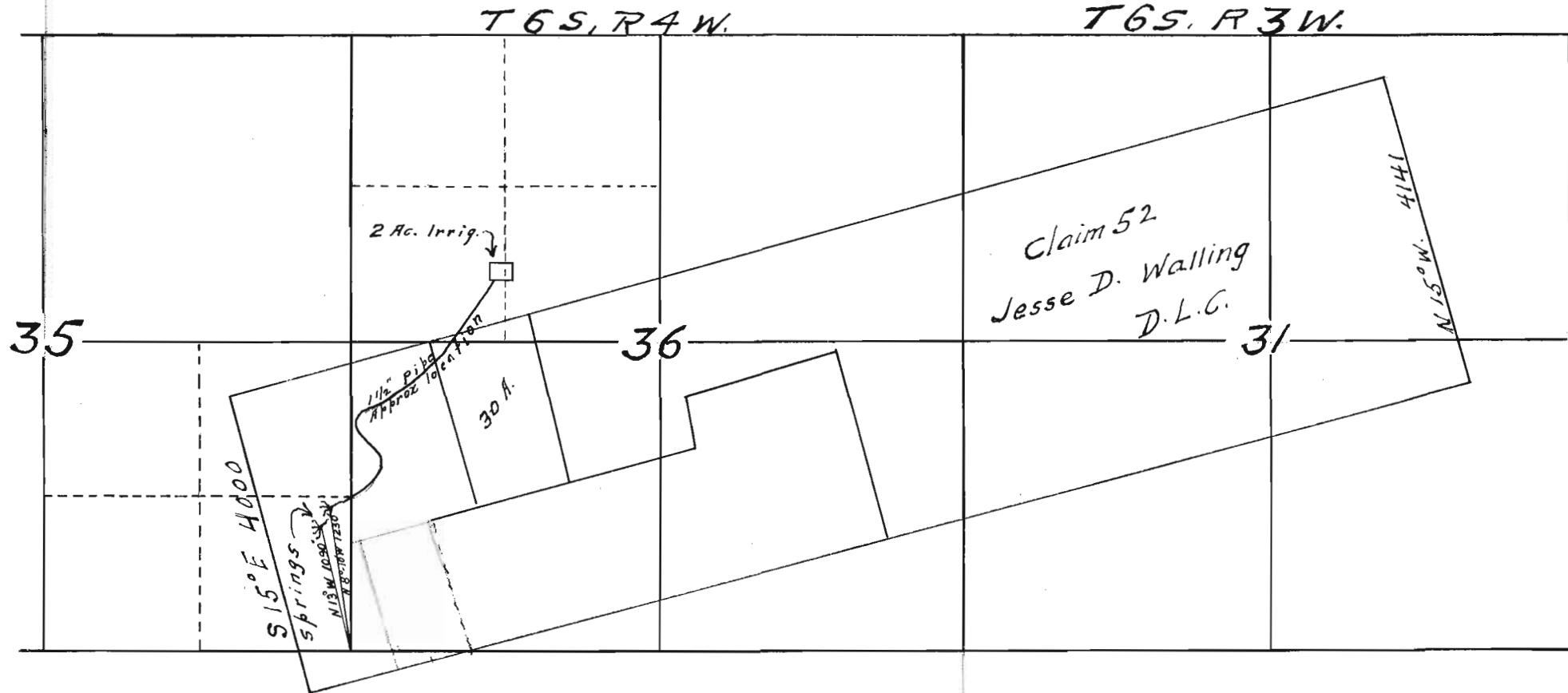


MAP TO ACCOMPANY APPLICATION BY
 W.F. CRAWFORD, SALEM, ORE.
 FOR PERMIT TO APPROPRIATE WATER

RHEA LUPER-STATE ENGINEER.



I, R.D. Cooper, of Salem, Oregon, do hereby certify that this map was made from notes taken during an actual survey made by me on January 13, 1926, and that it correctly represents the works described in the accompanying application.

R.D. Cooper
 Reg. Eng'r - 1140 - Oregon.

STATE ENGINEER
 RECEIVED
 JAN 14 1925
 SALEM, OREGON

Application No. 10562
 Permit No. 7130