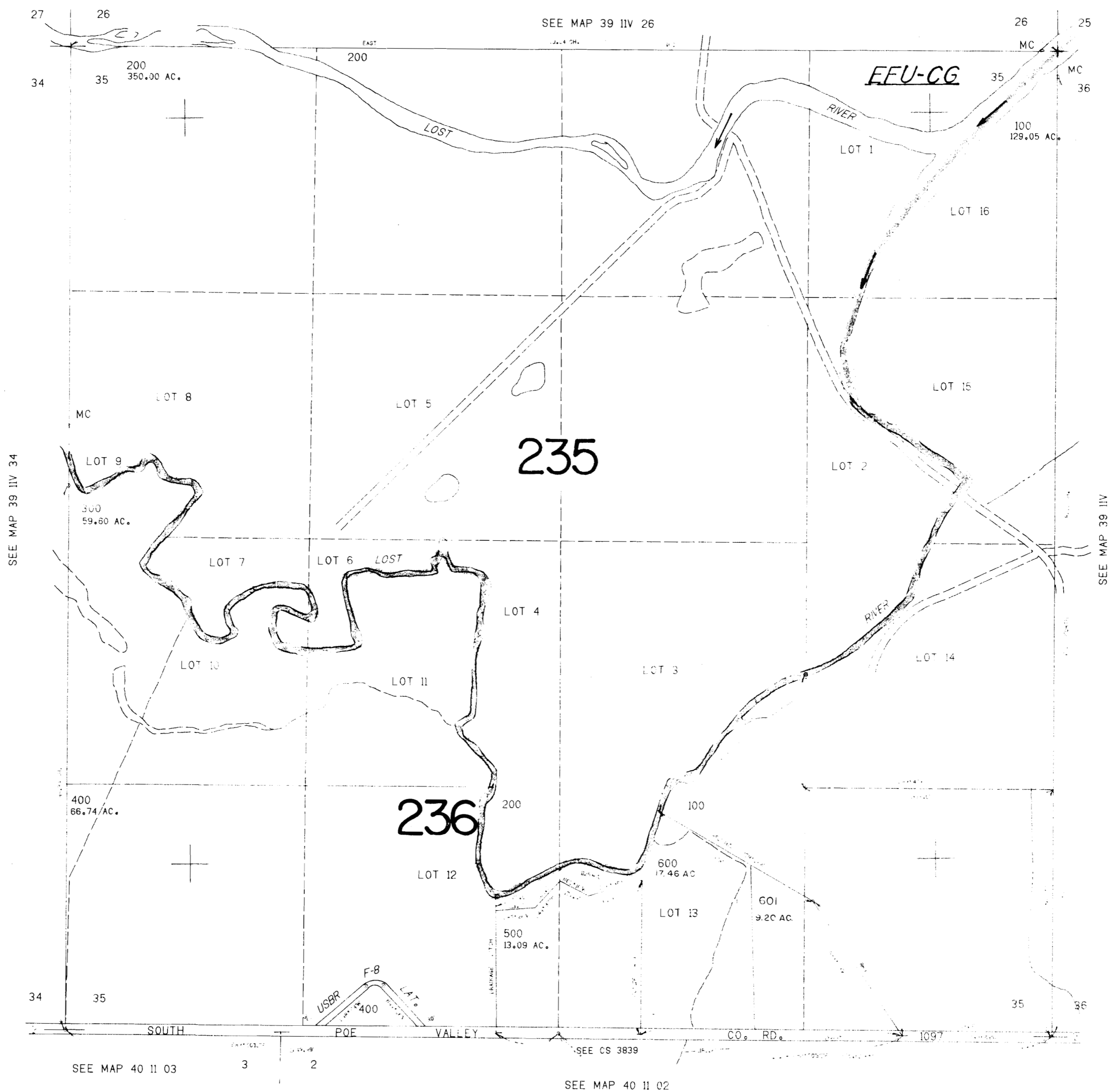


SECTION 35 T.39S. R.11 1/2E. W.M.
KLAMATH COUNTY

THIS MAP WAS PREPARED FOR
ASSESSMENT PURPOSE ONLY.

1"=400'

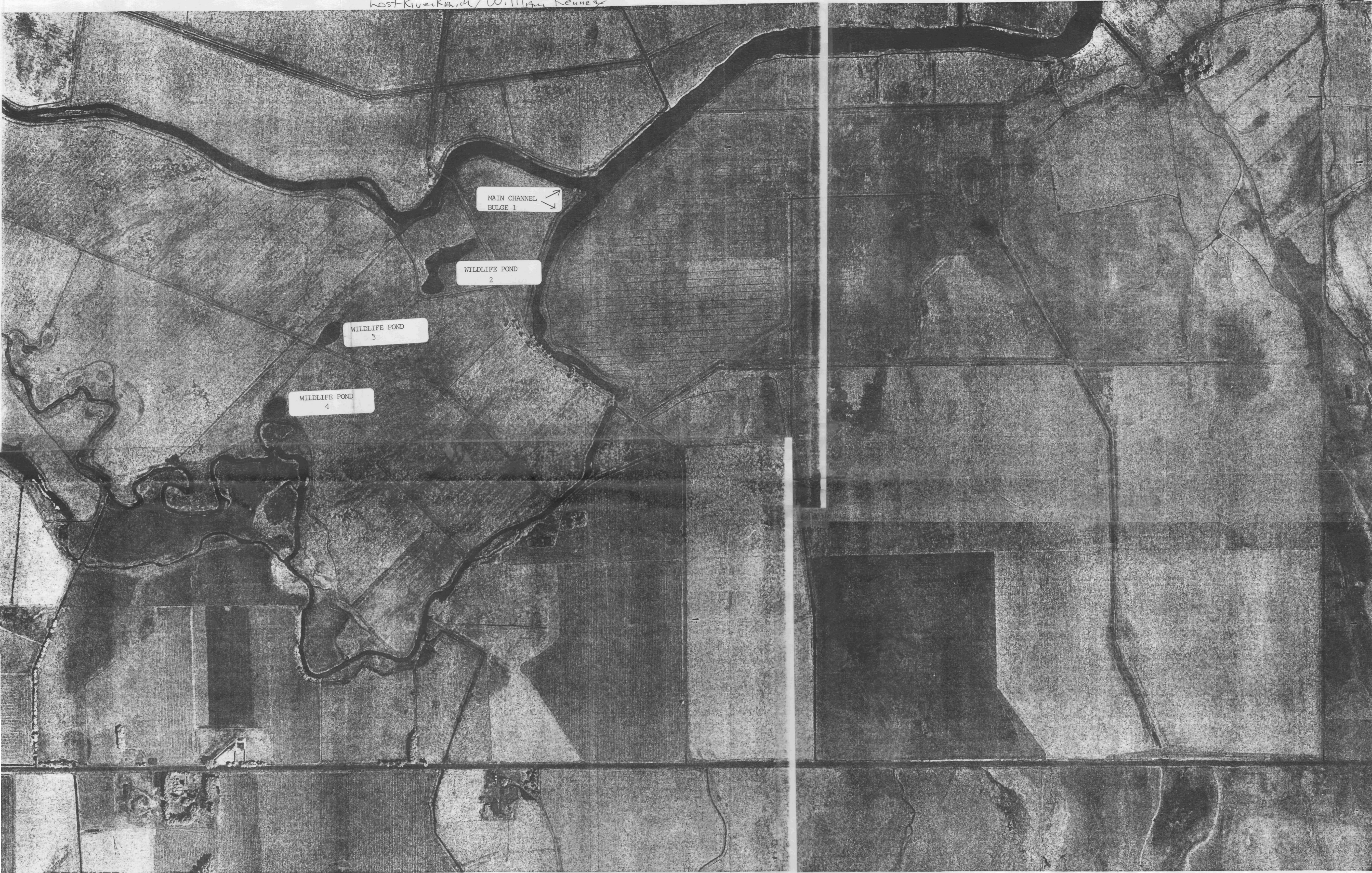


Application No. R-81231
Permit No.

RECEIVED
JUL 25 1996
WATER RESOURCES DEPT.
SALEM, OREGON

1728.000

host Kiveika.ch/William Kenney



MAIN CHANNEL
BULGE 1

WILDLIFE POND
2

WILDLIFE POND
3

WILDLIFE POND
4

RECEIVED

JUL 25 1996

WATER RESOURCES DEPT.
SALEM, OREGON

DATE OF PHOTOGRAPHY: 7-13-82

APPROX. SCALE: 1"=400'



KLAMATH IRRIGATION DISTRICT

KLAMATH FALLS, OREGON

SHEET NO. 36

SEC.	SEC.
35	36

T300 BULGE