

DE CASE 9/1/76

SCALE 1" = 600'



RECEIVED

JUL 25 1996

WATER RESOURCES DEPT.  
SALEM, OREGON

Application No. R-81340  
Permit No. 24-92W

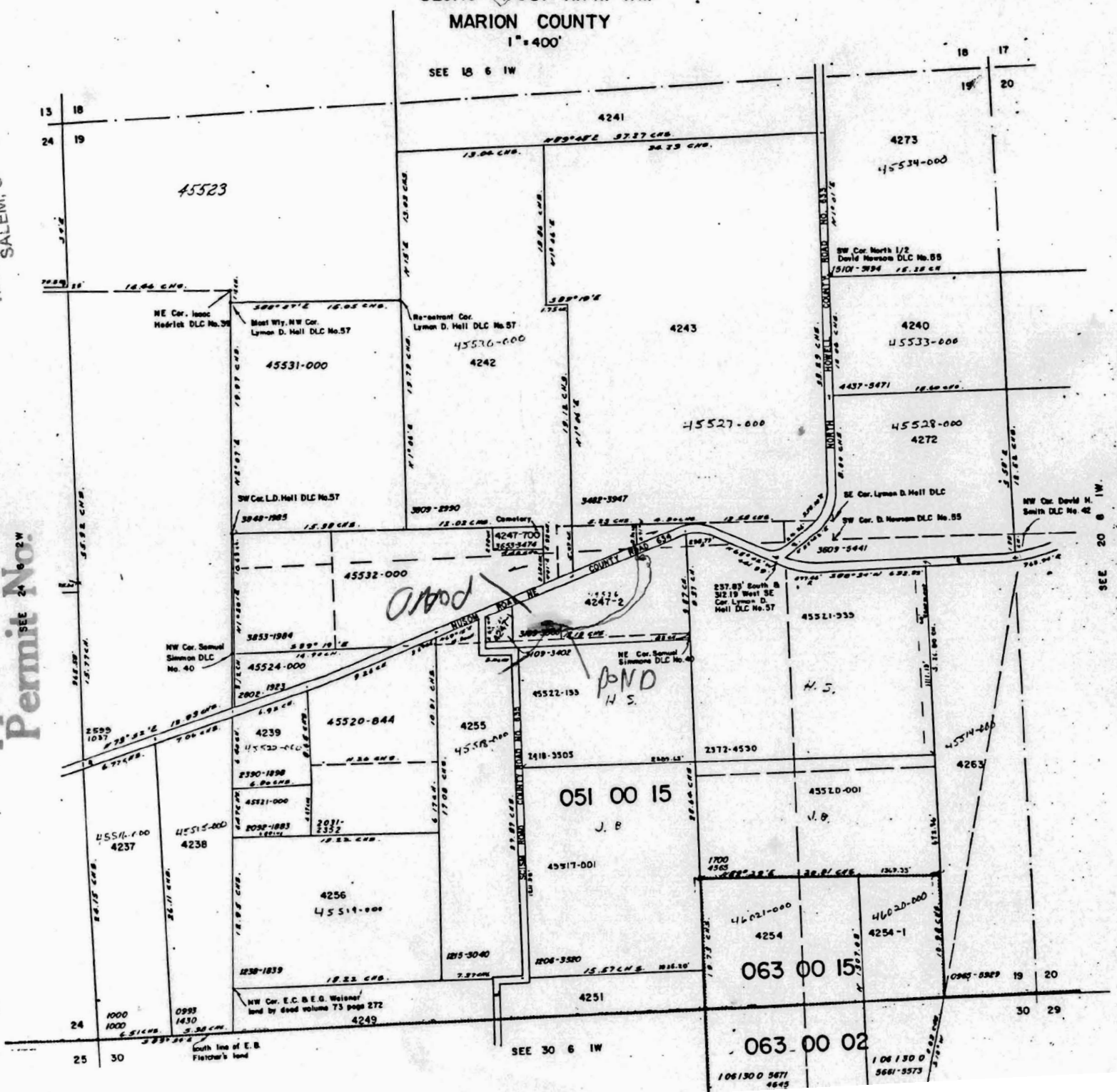
RECEIVED

DEC 30 1994

WATER RESOURCES DEPT.  
SALEM, OREGON

SEC. 19 T. 6S. R. 1W. WM  
MARION COUNTY  
1" = 400'

SEE 18 6 IW



SEE 30 6 IW

SEE 20 6 IW

Application No. R-81340  
Permit No.

RECEIVED

DEC 30 1994

WATER RESOURCES DEPT.  
SALEM, OREGON

RECEIVED

JUL 25 1996

WATER RESOURCES DEPT.  
SALEM, OREGON

