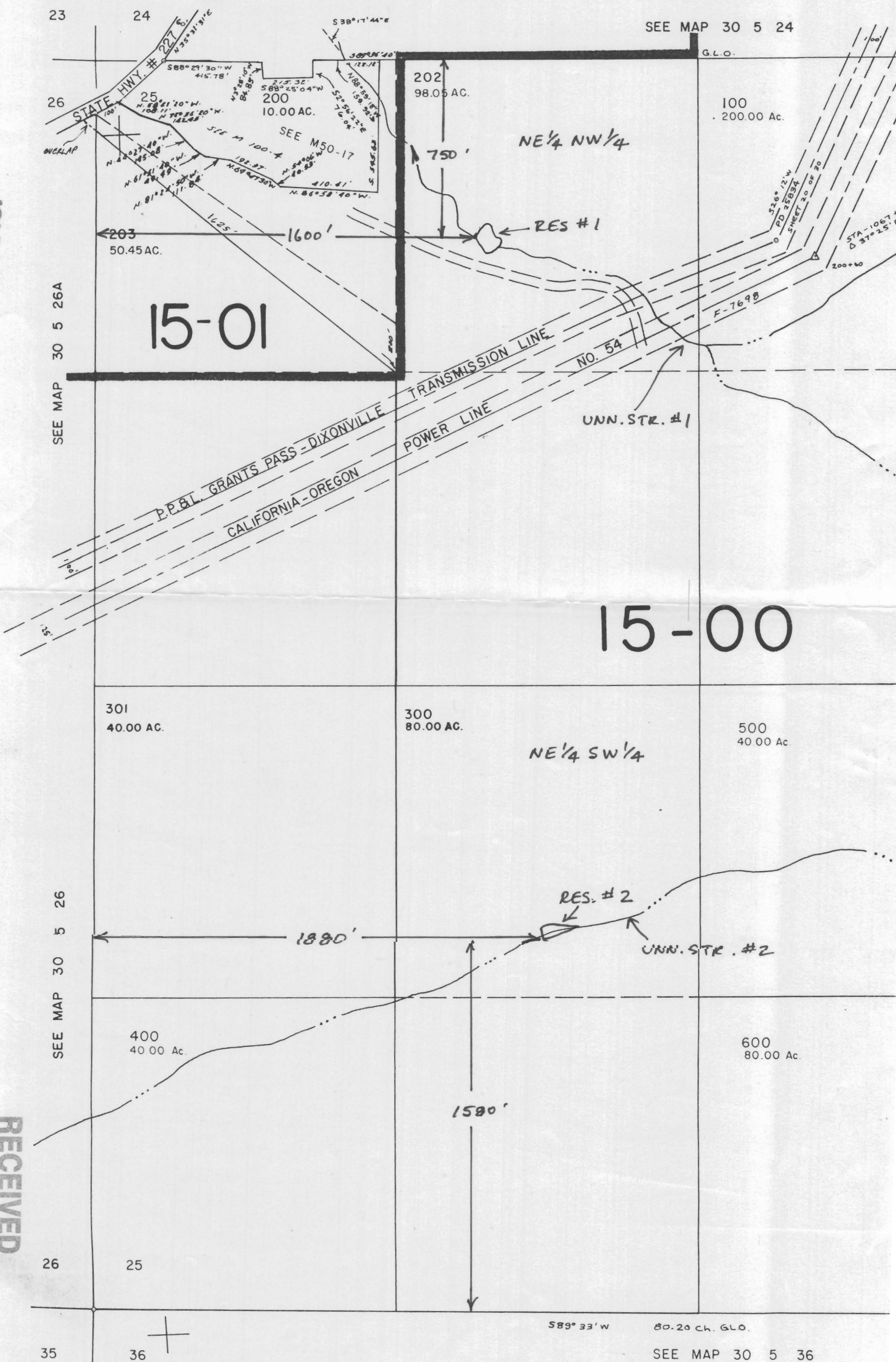


SECTION 25 T.30S. R.5W. W.M.
DOUGLAS COUNTY

1" = 400'

This map was prepared for
assessment purpose only

Application No. R-81352
Permit No.



23

24

SEE MAP 30 5 24

26

SEE MAP 30 5 26A

15-01

NE 1/4 NW 1/4

301
40.00 AC.

300
80.00 AC.

NE 1/4 SW 1/4

500
40.00 Ac.

SEE MAP 30 5 26

1880'

RES. #2

UNN. STR. #2

400
40.00 Ac.

1580'

600
80.00 Ac.

26

25

589° 33' W

80.20 CH. G.L.O.

35

36

SEE MAP 30 5 36

WATER RESOURCES DEPT.
SALEM, OREGON

RECEIVED

JUL 23 1996