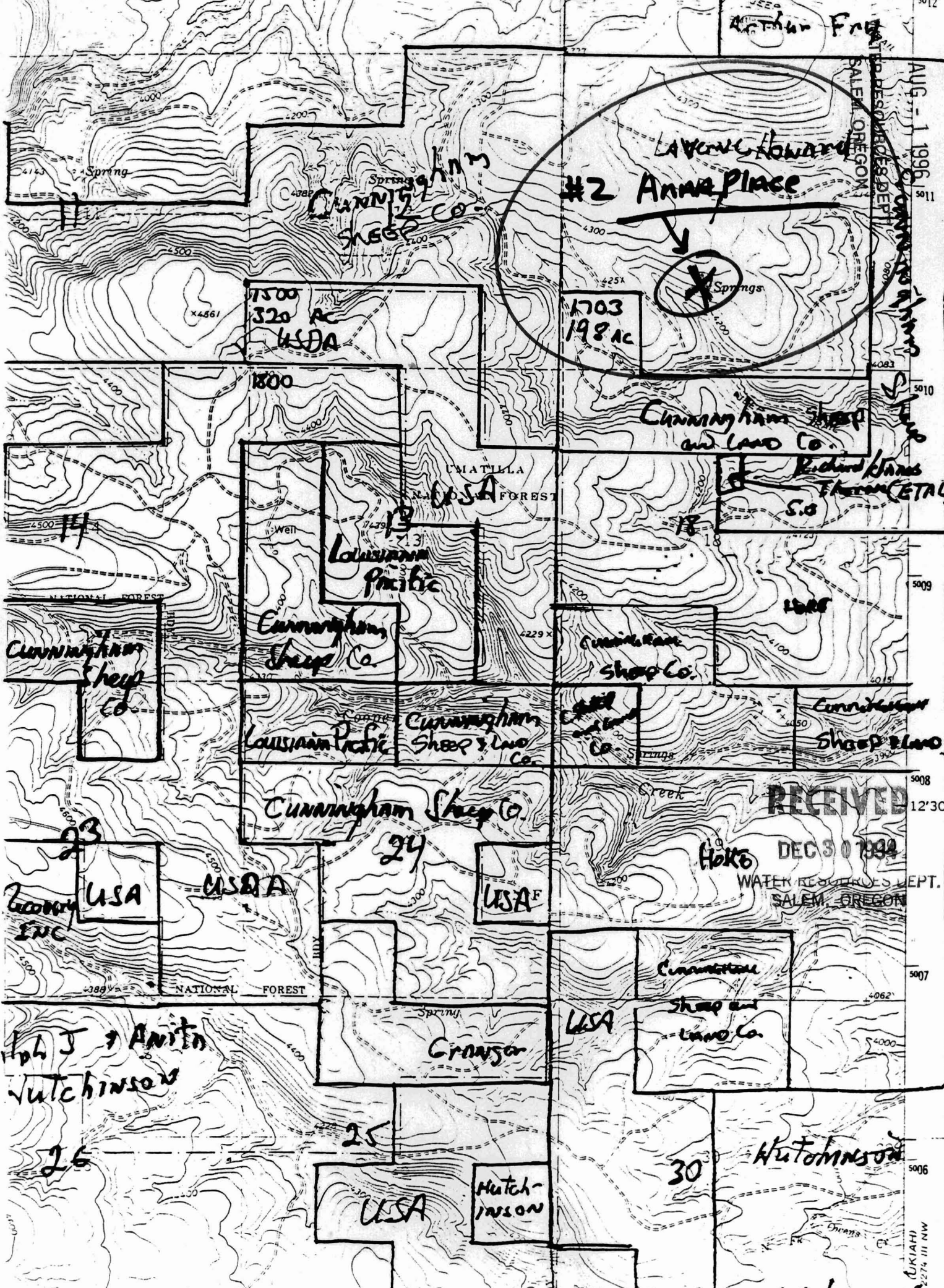


RECEIVED

AUG - 1 1996

Arthur Fry

SALEM OREGON
WATER RESOURCES DEPT.



CUNNINGHAM
SHEEP CO.

LAVERNE HOWARD
#2 Anna Place
Springs

1500
320 AC
USDA

1703
198 AC

Cunningham Sheep
and Land Co.

Richard James
Elliott ETAL
S.O.

1800
LOUISIANA
PACIFIC

Cunningham
Sheep Co.

Cunningham
Sheep Co.

Cunningham
Sheep Co.

Louisiana Pacific
Cunningham
Sheep & Land Co.

Sheep
and Land Co.

Cunningham
Sheep & Land

Cunningham Sheep Co.

RECEIVED

23
USA
ENC

USA

24
USA

USA

12'30"
DEC 30 1994
WATER RESOURCES DEPT.
SALEM, OREGON

John & Anita
Hutchinson

Granger

Cunningham
Sheep and
Land Co.

26
USA

25
USA

Hutchinson

30
Hutchinson

5012
5010
5009
5008
12'30"
5007
5006

RECEIVED

AUG - 1 1996

WATER RESOURCES DEP
SALEM, OREGON

RECEIVED

DEC 30 1994

WATER RESOURCES DEP
SALEM, OREGON

2174 1 SE
(GURDANE)

2

339

2'30"

340

R 30 E

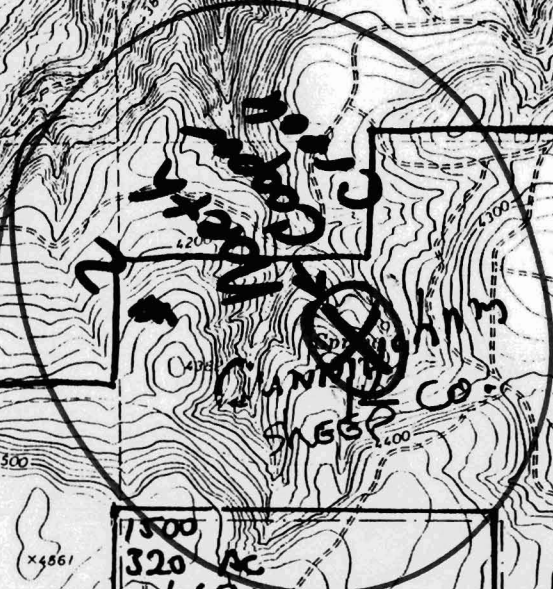
341

2 380 000 FEET R 31 E

342

Joe P Doherty
Ranch Inc

Cunningham
Sheep and
Land Co.



USA
Bullet USA
Spring
Fork

17500
320 AC
USDA

1703
198 AC

Louisiana Pacific

1800

Cunningham
and Land

Cunningham
Sheep Co.

Cunningham
Sheep
Co.

Louisiana
Pacific
Cunningham
Sheep Co.

Cunningham
Sheep Co.

USA
22

23

Louisiana Pacific
Cunningham
Sheep and
Land Co.

Cunningham
and Land
Co.

Cunningham Sheep Co.

24

Creek

Hoke

2174 1 SE (GURDANE)

2' 30" 340 R. 30 E. 341 2 38000 FEET R 31 E 32

RECEIVED
DEC 30 1984
WATER IN JURISDICTION OF
SALEM, OREGON

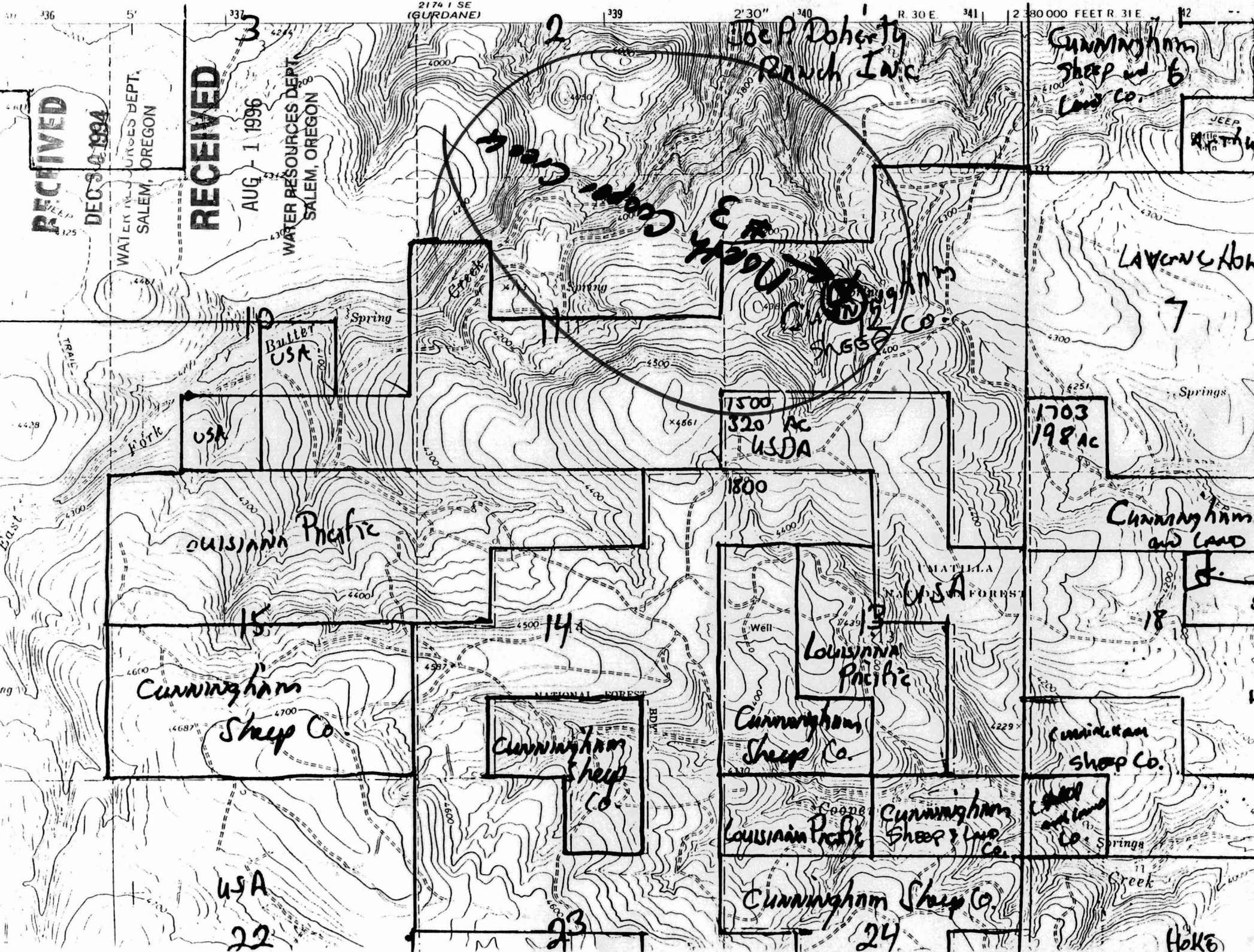
RECEIVED
AUG - 1 1996
WATER RESOURCES DEPT
SALEM, OREGON

Joe P. Doherty
Ranch Inc

Cunningham
Sheep and
Land Co.

Map of
Cunningham
Sheep Co.

LAYERS & HOW



USA

Bullet
USA

17500
320 AC
USDA

1703
198 AC

Louisiana Pacific

Cunningham
and Land

Cunningham
Sheep Co.

Cunningham
Sheep Co.

Cunningham
Sheep Co.

Cunningham
Sheep Co.

USA

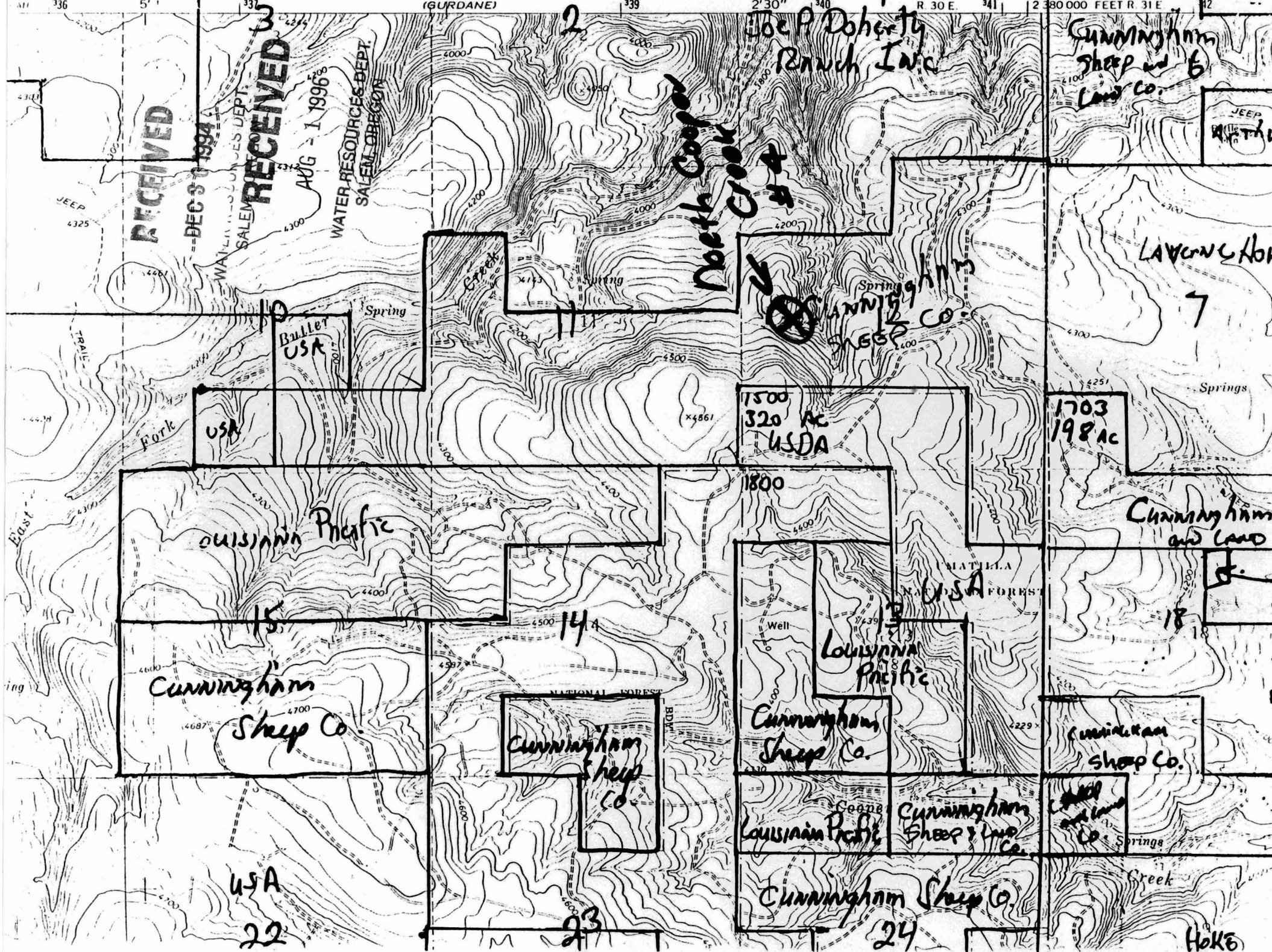
Louisiana Pacific

Cunningham
Sheep & Land Co.

Cunningham
and Land Co.

Cunningham Sheep Co.

Hoke



RECEIVED

DEC 30 1994

RECEIVED

AUG - 1 1996

SALEM RESOURCES DEPT.

WATER RESOURCES DEPT.
SALEM, OREGON

Joe P. Doherty
Ranch, Inc.

Cunningham
Sheep and
Lamb Co.

North Creek

LAVON C. AOK

Bullet
USA

Cunningham
Sheep Co.

USA

1500
320 AC
USDA

1703
198 AC

Louisiana Pacific

Cunningham
and Lamb

Cunningham
Sheep Co.

Cunningham
Sheep
Co.

Louisiana
Pacific

Cunningham
Sheep Co.

Cunningham
Sheep Co.

USA

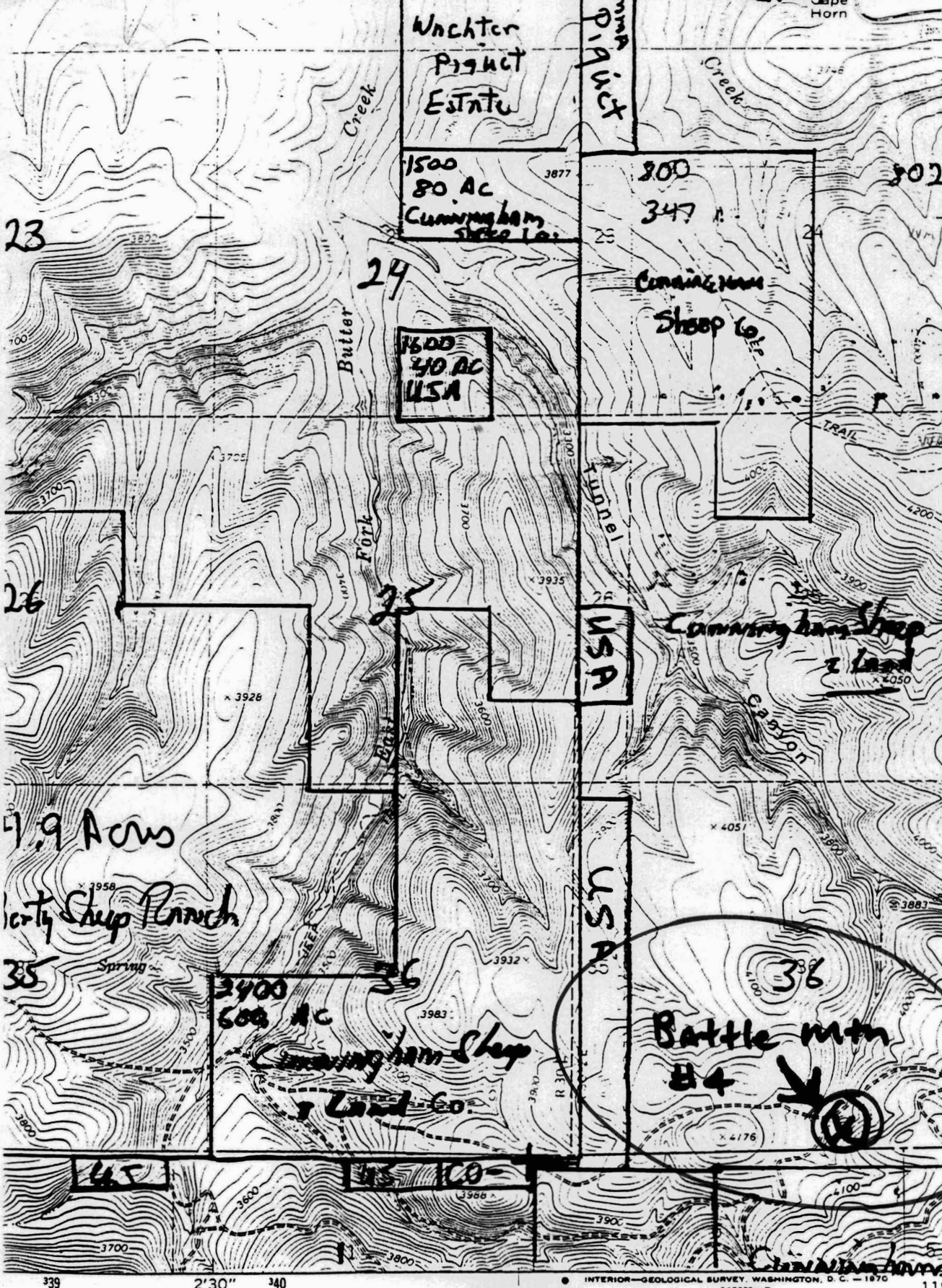
Louisiana Pacific

Cunningham
Sheep & Lamb
Co.

Cunningham
Sheep & Lamb
Co.

Cunningham Sheep Co.

HOKE



RECEIVED

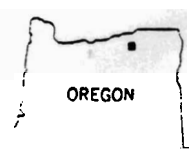
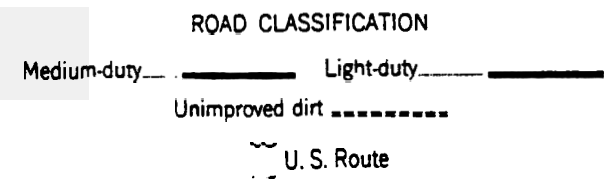
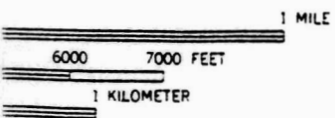
DEC 30 1994

17'30" 5017 SALEM, OREGON

RECEIVED

AUG - 1 1996

WATER RESOURCES DEPT. SALEM, OREGON

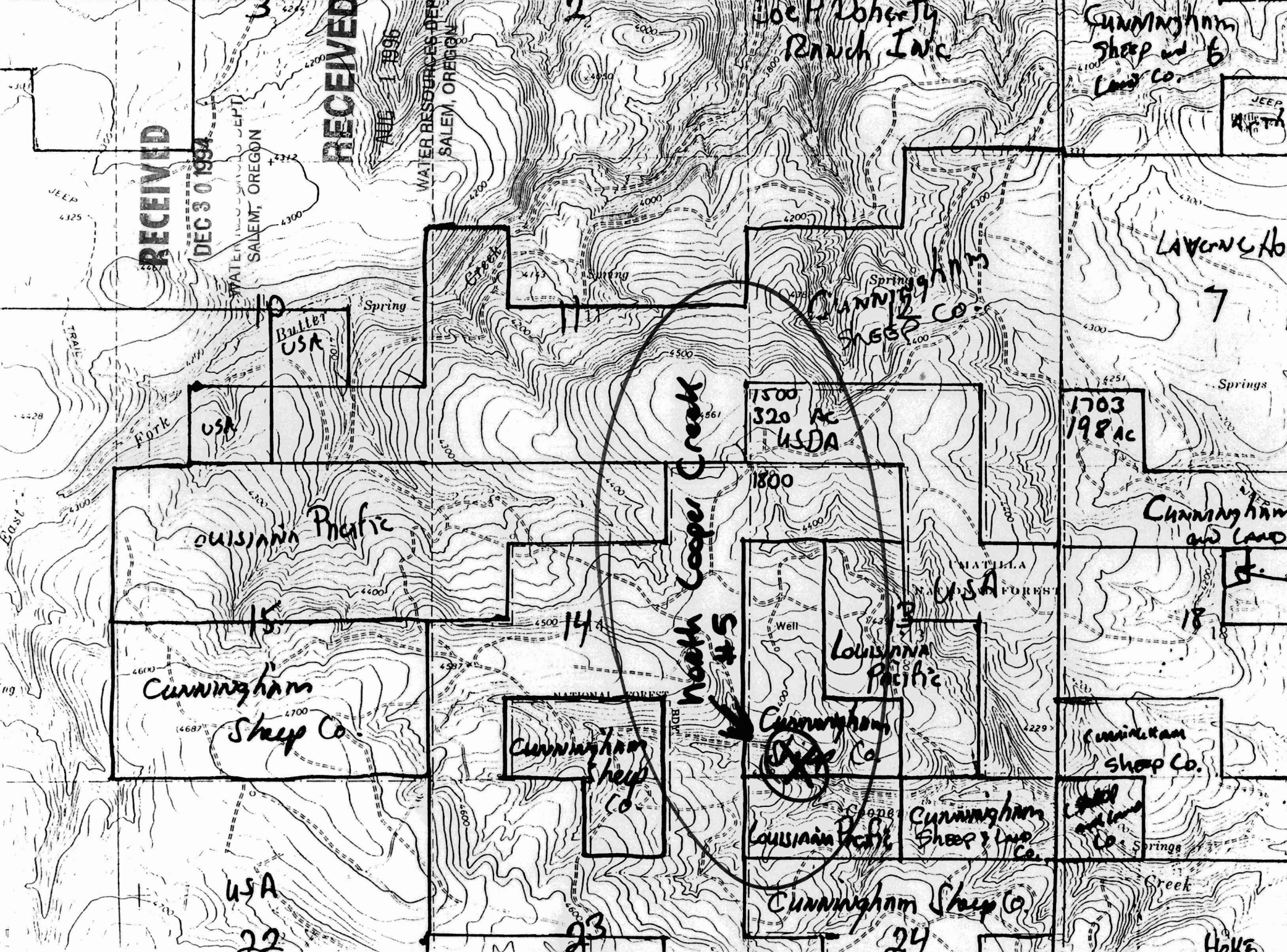


SUKIARD 222 11 NW

INTERIOR—GEOLOGICAL SURVEY, WASHINGTON, D. C. — 1970

R. 30 E. R. 31 E. 342000m E. 45115' 119°00'

336 5' 337 2174 1 SE (GURDANE) 339 2' 30" 340 R 30 E 341 2 380 000 FEET R 31 E 342



RECEIVED

DEC 30 1994

WATER RESOURCES DEPT. SALEM, OREGON

RECEIVED

AUG 1 1995

WATER RESOURCES DEPT. SALEM, OREGON

Joe P. Doherty Ranch, Inc

Cunningham Sheep and Land Co.

JEEP WITH

LAVON C. HOW

7

Bullet USA

USA

1500 320 AC USDA

1703 198 AC

Louisiana Pacific

North Cooper Creek

#15

1800

Cunningham and Land

NATIONAL FOREST

USA FOREST

Louisiana Pacific

Cunningham Sheep Co.

Cunningham Sheep Co.

Cunningham Sheep Co.

Cunningham Sheep Co.

USA

Louisiana Pacific

Cunningham Sheep & Land Co.

Cunningham Sheep & Land Co.

Cunningham Sheep Co.

22

23

24

HOKE