

UNITED STATES  
DEPARTMENT OF THE INTERIOR  
GEOLOGICAL SURVEY

RECEIVED

DEC 30 1994

PENDLETON 40 MI. BATTLE MOUNTAIN SUMMIT 1.6 MI. 346 57'30"

Cunningham Shear Island  
119° 00'

USA

Arthur Fry  
(EPL)

RECEIVED

AUG - 1 1996

WATER RESOURCES DEPT.

SALEM, OREGON

ET AL

Cunningham Shear Island Co.

Louise Howard

Arthur Fry

Cunningham Shear Island

John Rehberg

Cunningham Shear Island Co.

Cunningham Shear Island

BEAN CAMP #1

Aoke

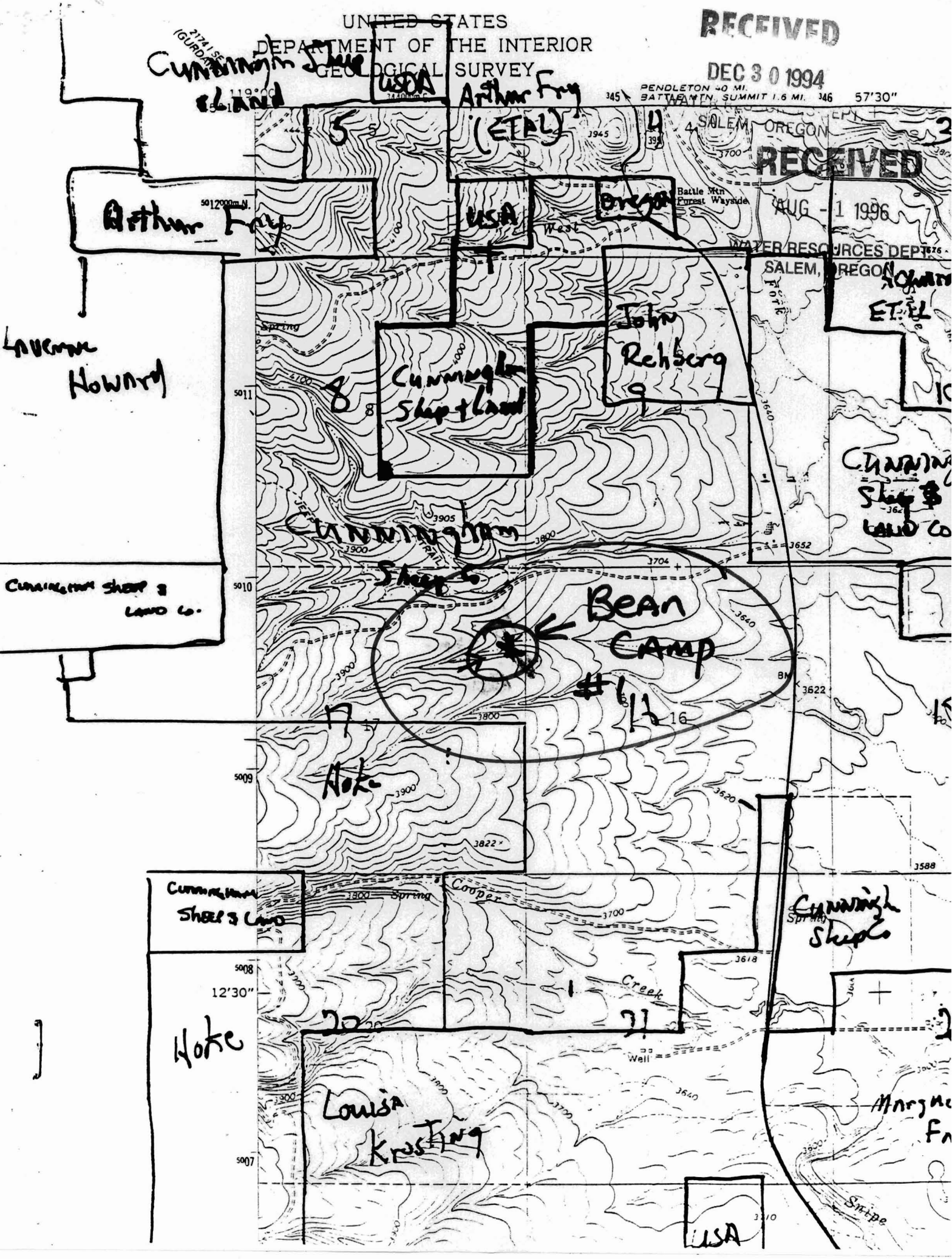
Cunningham Shear Island

Cunningham Shear Island

Hoke

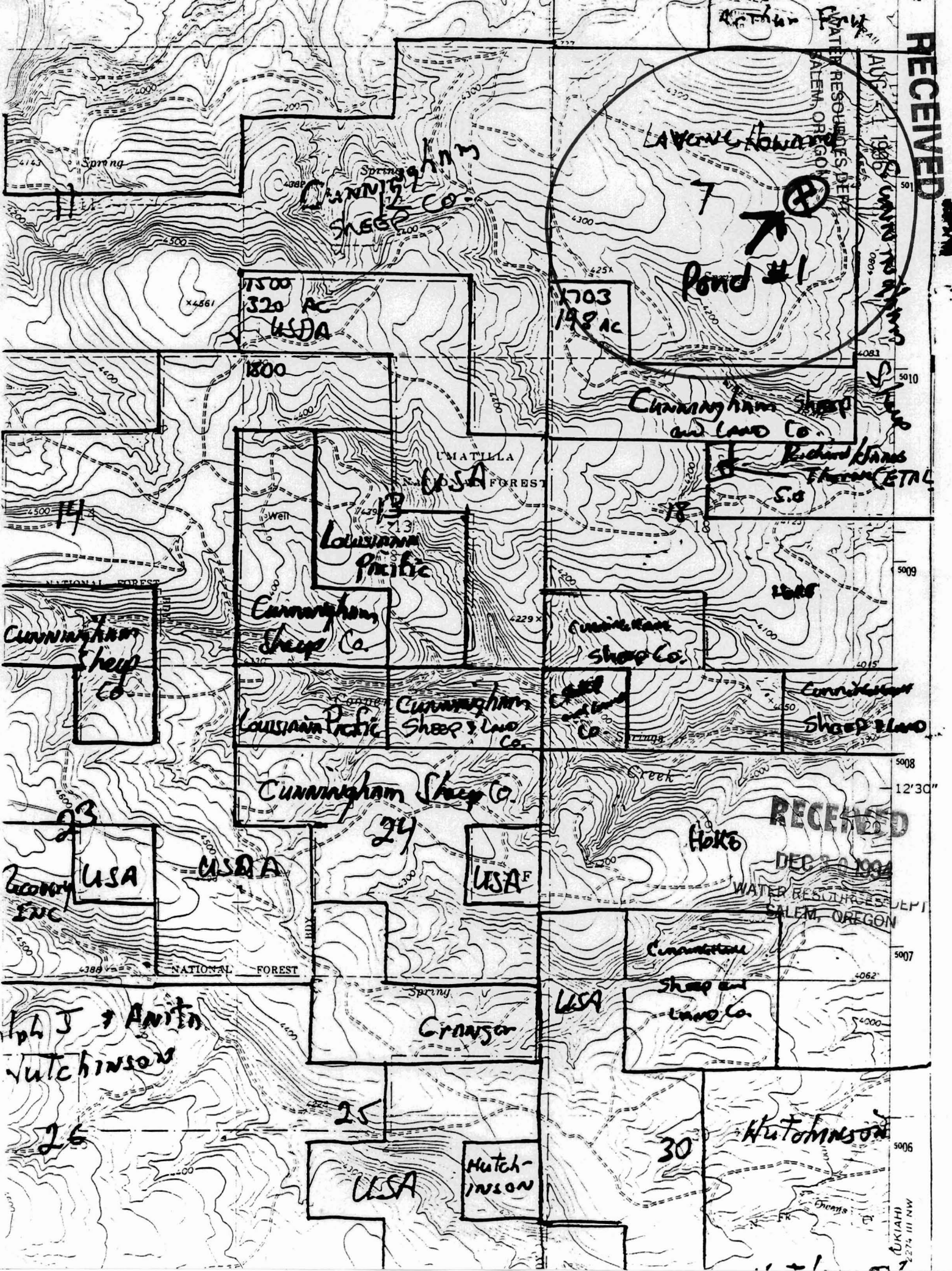
Louise Kresting

USA



RECEIVED

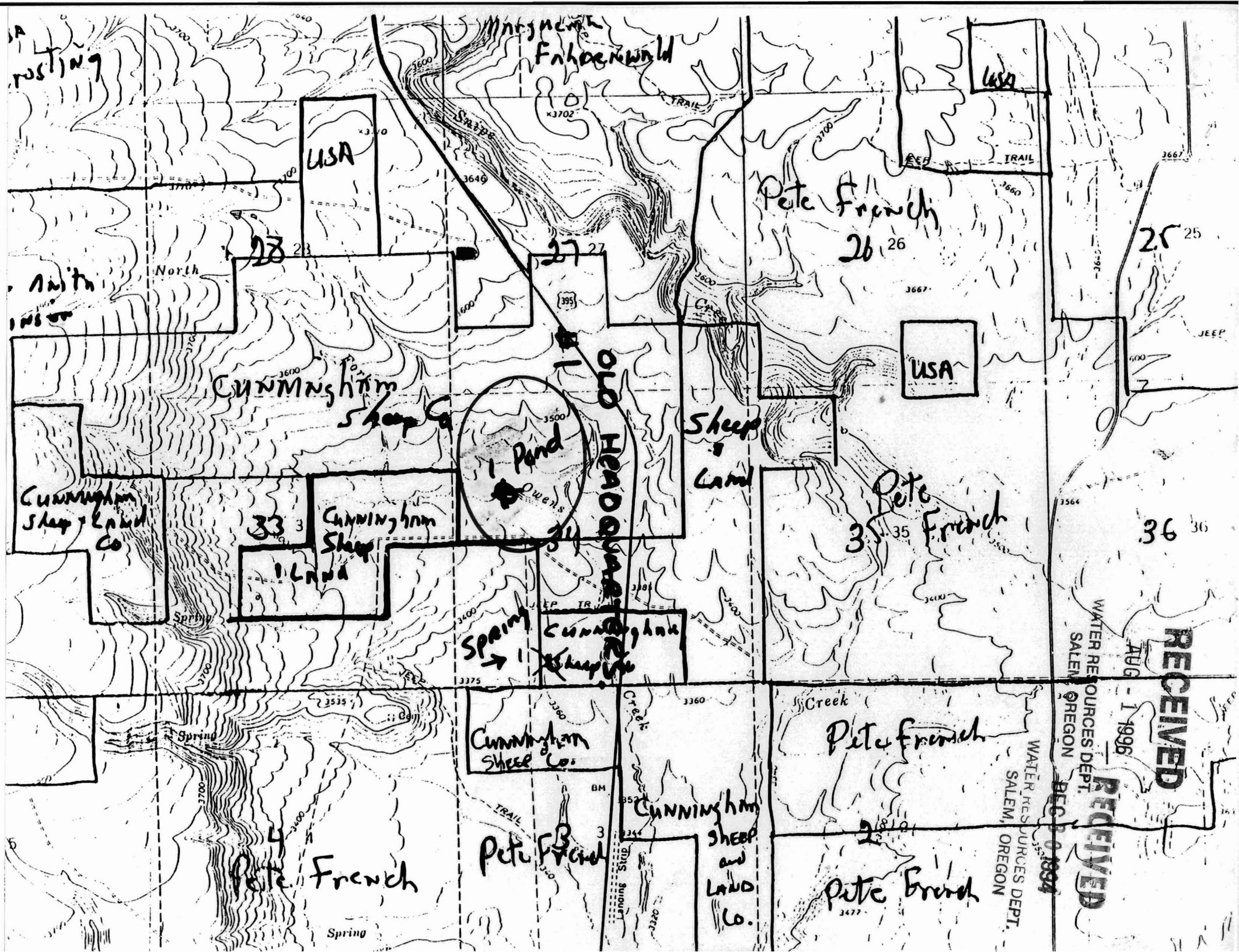
WATER RESOURCES DEPT SALEM, OREGON



RECEIVED

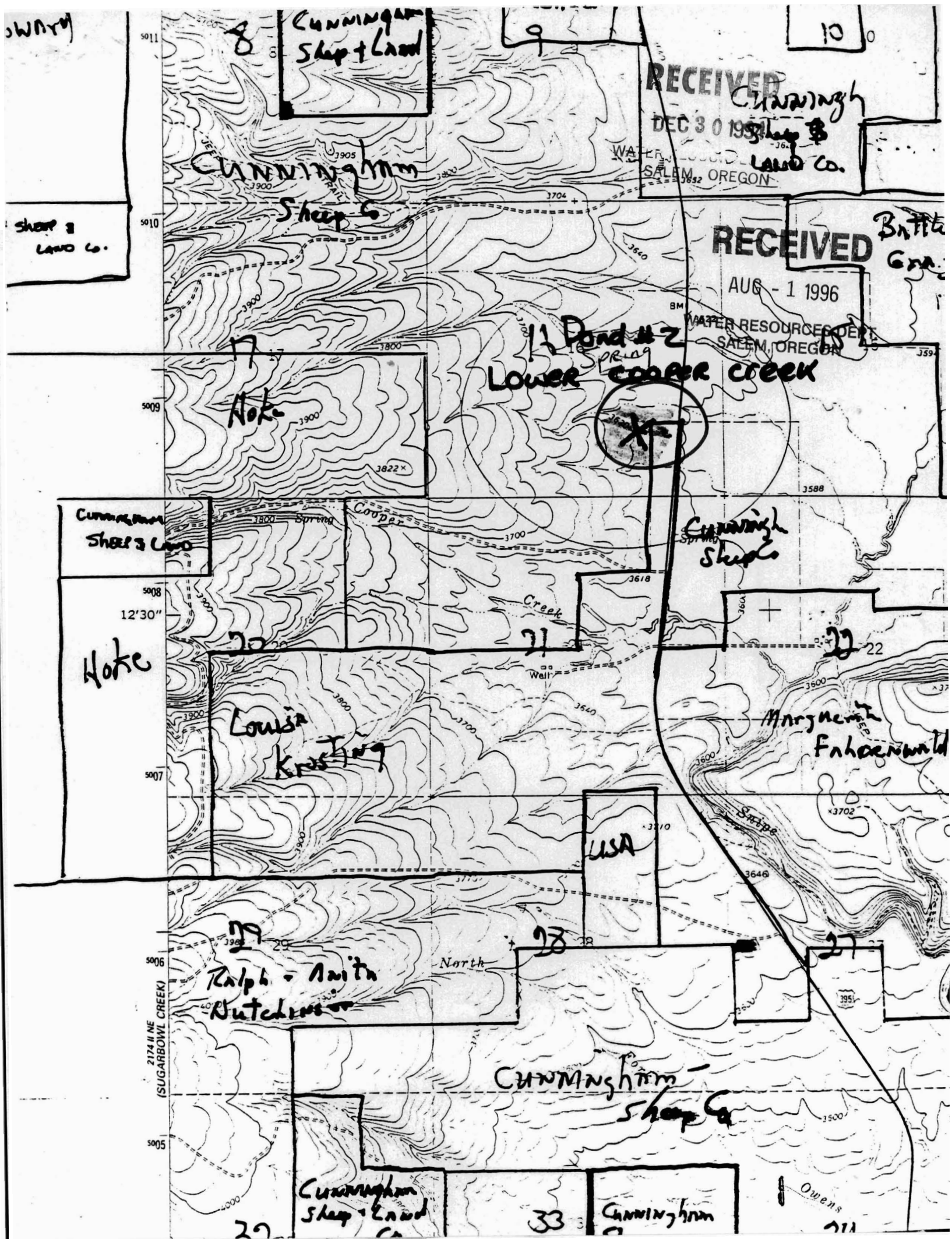
DEC 20 1994

WATER RESOURCES DEPT SALEM, OREGON



RECEIVED  
AUG - 1 1996  
WATER RESOURCES DEPT.  
SALEM, OREGON

RECEIVED  
DEC 10 1994  
WATER RESOURCES DEPT.  
SALEM, OREGON



SW 1/4

5011  
5010  
5009  
5008  
5007  
5006  
5005

2174 II NE (SUGARBOWL CREEK)

8  
Cunningham  
Sheep & Land

9

10

RECEIVED  
Cunningham  
DEC 30 1993  
SALEM, OREGON

Sheep &  
Land Co.

CUNNINGHAM  
Sheep Co.

RECEIVED  
AUG - 1 1996  
WATER RESOURCES DEPT  
SALEM, OREGON

Battle  
Creek

11 Pond # 2  
Lower Cooper Creek

X

17  
Hoke

Cunningham  
Sheep & Land

Cunningham  
Sheep Co.

12'30"  
Hoke

Louisa  
Kroshing

Margaret  
Fahrenwald

USA

19  
Ralph - Anita  
Nutchens

28

27

CUNNINGHAM  
Sheep Co.

Cunningham  
Sheep & Land

CUNNINGHAM

Owens

29

33

31

RECEIVED

RECEIVED

UNITED STATES  
DEPARTMENT OF THE INTERIOR  
GEOLOGICAL SURVEY

AUG - 1 1996

WATER RESOURCES DEPT DEC 30 1994

2741 SE  
169th Ave  
Cunningham  
Island

USA

Arthur Fry  
(ETAL)

SALEM, OREGON  
36° 54' 30" N 123° 05' 30" W  
1.6 MI. 346 57' 30"

Arthur Fry

USA

Oregon

SALEM, OREGON

Battle Mtn  
Forest Wayside

LAURENCE  
HOWARD

Cunningham  
Sheep Land

John  
Rehberg

HOWARD  
ETAL

Bean #2  
Camp

CHARLES  
SHEEP &  
LAND CO.

Cunningham Sheep &  
Land Co.

CUNNINGHAM  
SHEEP &  
LAND CO.

Hoke

Cunningham  
Sheep & Land

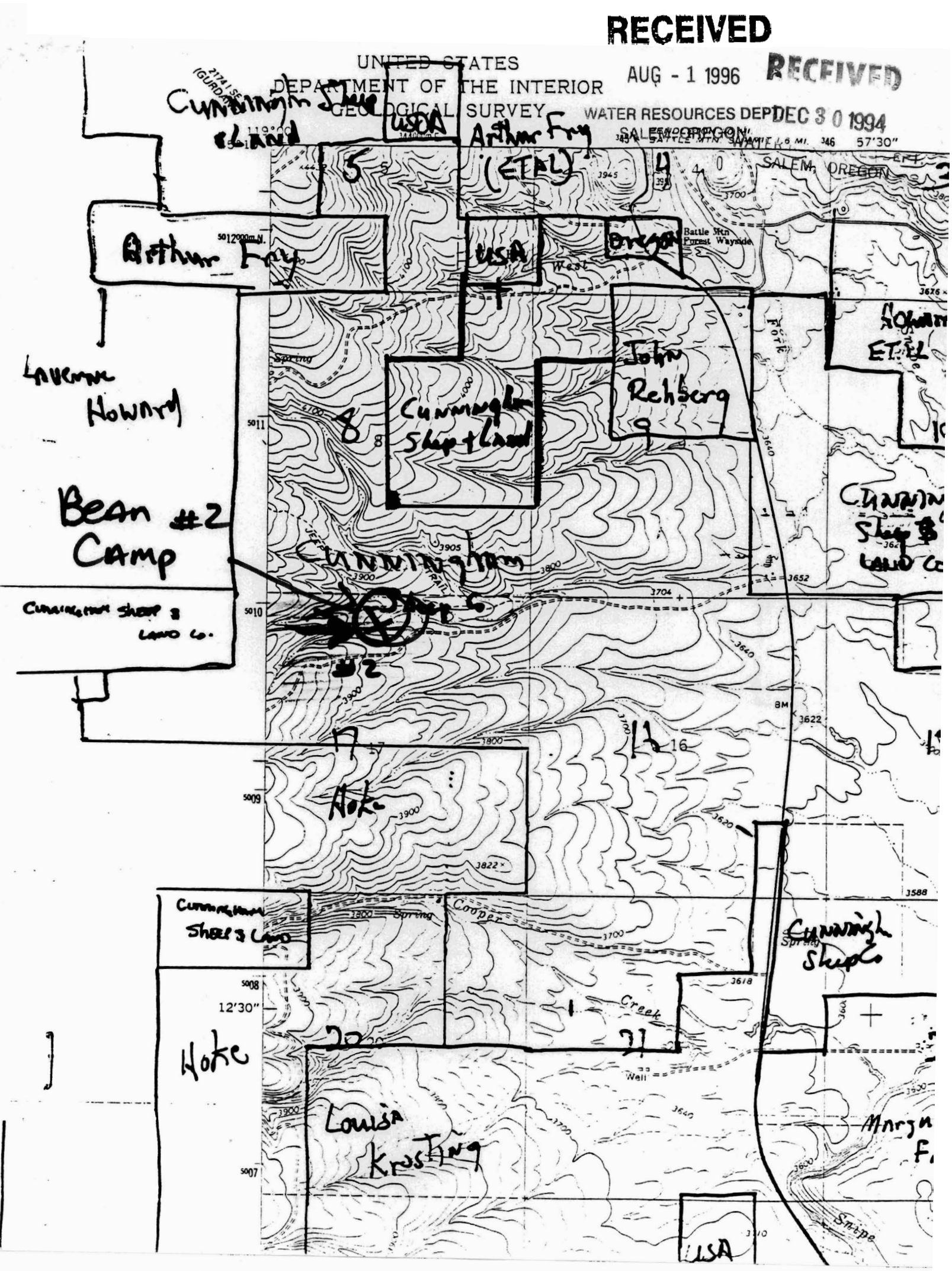
Cunningham  
Sheep &  
Land

Hoke

Louisa  
Krusting

Morgan  
F.

USA



RECEIVED

RECEIVED

UNITED STATES

AUG - 1 1996

DEPARTMENT OF THE INTERIOR

GEOLOGICAL SURVEY WATER RESOURCES DEPT.

DEC 30 1994

CUNNINGHAM  
island

USA

Arthur Fry

REGISTRATION

SALEM, OREGON 346 57'30"

SALEM, OREGON

Battle Mtn Forest Wayside

Arthur Fry

USA

Ore

LAVENNE HOWARD

BEAN CAMP

Cunningham  
Sheep Land

John  
Rehberg

SCHWAB  
ET AL

CUNNINGHAM  
Sheep &  
LAND CO

CUNNINGHAM SHEEP &  
LAND CO.

CUNNINGHAM  
Sheep Co.

Hoke

Cunningham  
Sheep & Land

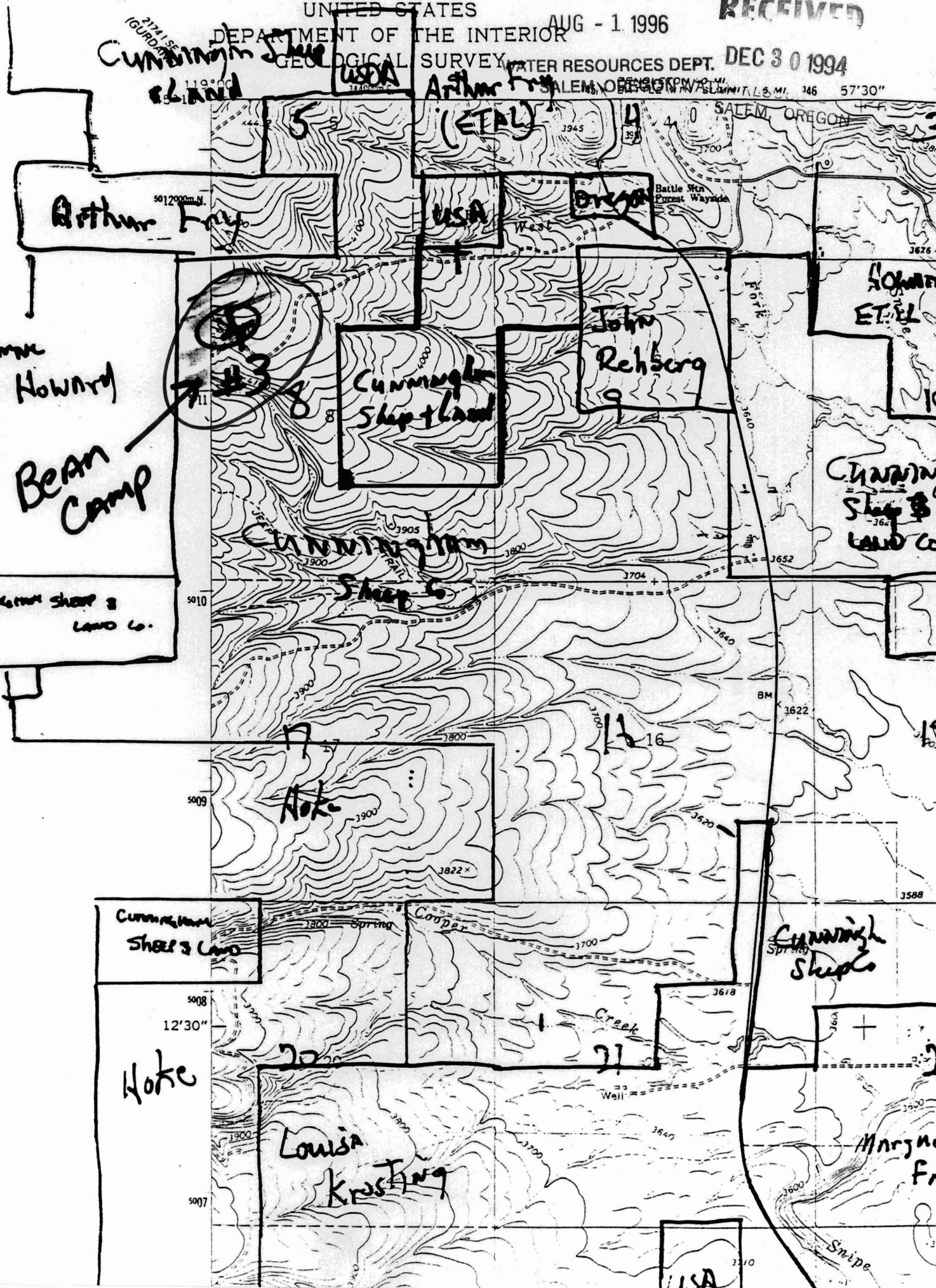
Cunningham  
Sheep Co

Hoke

Louisa  
Krusting

Margne  
F

USA



RECEIVED

UNITED STATES

AUG - 1 1996

DEPARTMENT OF THE INTERIOR

GEOLOGICAL SURVEY WATER RESOURCES DEPT.

RECEIVED

2741 SE  
16900 N  
Cunningham  
Sheep  
Land

USA

Arthur Fry  
(ETAL)

SALEM, OREGON  
BATTLE MTN. SURVEY  
45° 57' 30"

REC 30 1994

Arthur Fry

USA

John  
Rehberg

Howard  
ETAL

Avenue  
Howard  
Bean  
Camp

Cunningham  
Sheep Land

Cunningham  
Sheep  
Land Co.

Cunningham Sheep  
Land Co.

Cunningham  
Sheep Co.

Hoke

Cunningham  
Sheep's Land

Cunningham  
Sheep's

Hoke

Louisa  
Krusting

Margaret  
F.

USA

