

3 3

1/4 SE  
CABBAGE HILL

UNITED STATES  
DEPARTMENT OF THE INTERIOR  
GEOLOGICAL SURVEY

RECEIVED

118°30' 383000m.E R. 34 E. R. 35 E.  
45°30'

AUG - 1 1998

WATER RESOURCES DEPT  
SALEM, OREGON

5039000m.N.

PILOT ROCK 1/4 MI

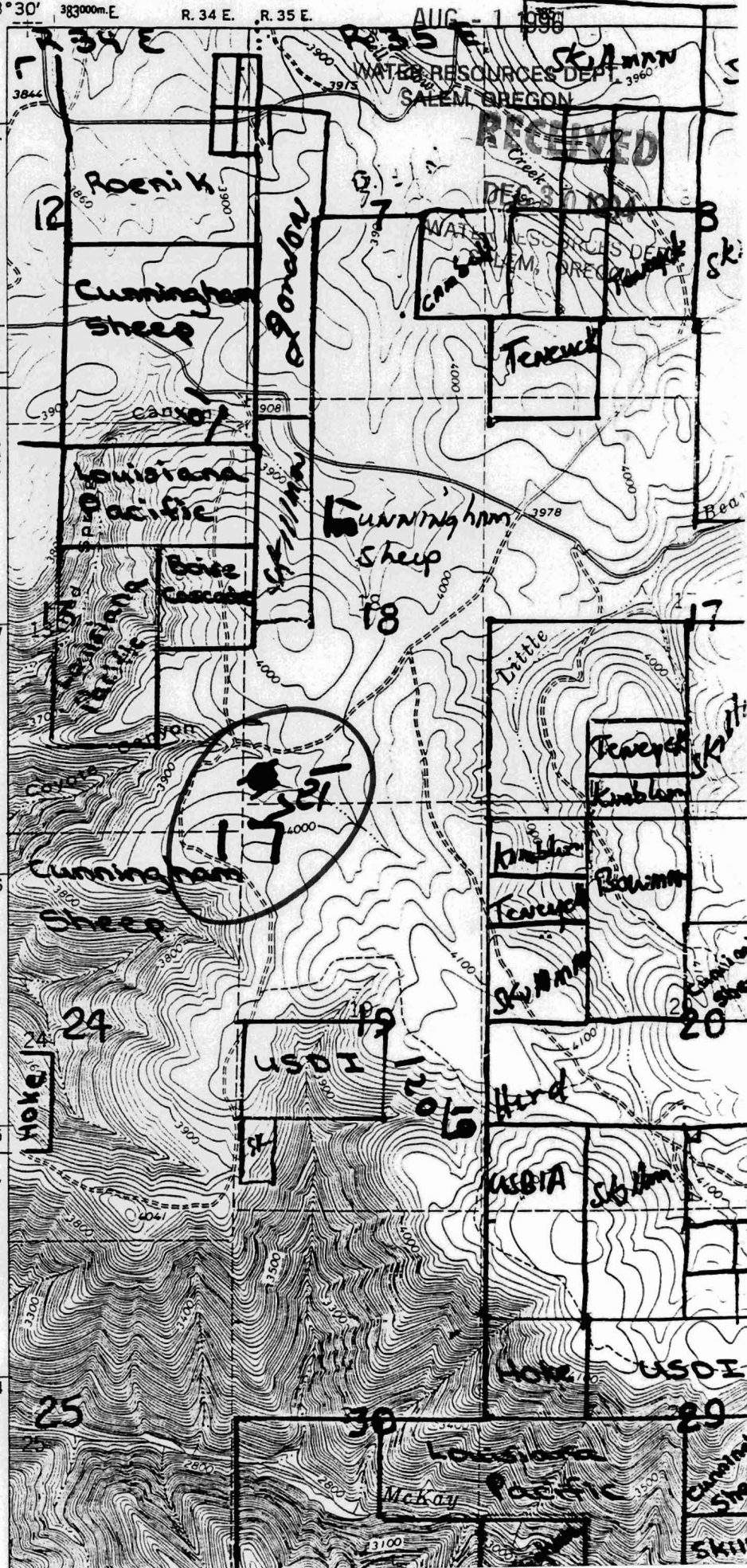
5037

5036

5035

27'30"

5034

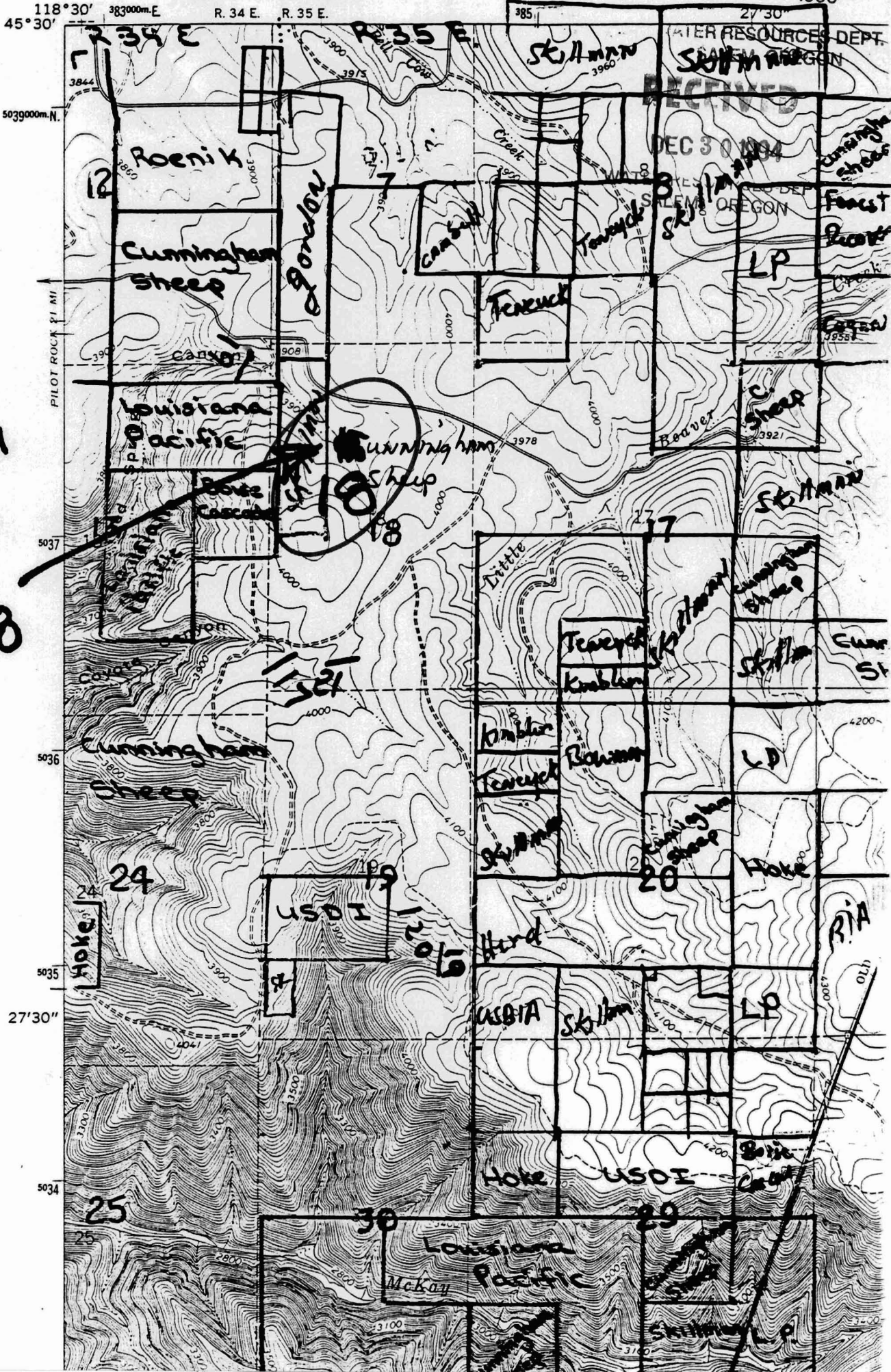


Meachem  
LAKE  
# 17

3

UNITED STATES  
DEPARTMENT OF THE INTERIOR  
GEOLOGICAL SURVEY

RECEIVED  
AUG - 1 1996



MEACHEM  
LAKE  
#18

FOREST SERVICE DEPT. OF AGRICULTURE  
RECEIVED  
DEC 30 1994

Cunningham Sheep  
Forest Service  
CANYON

Cunningham Sheep #18

Hoke  
24

USDA  
19

Hoke  
18

USDA  
20

25

30

29

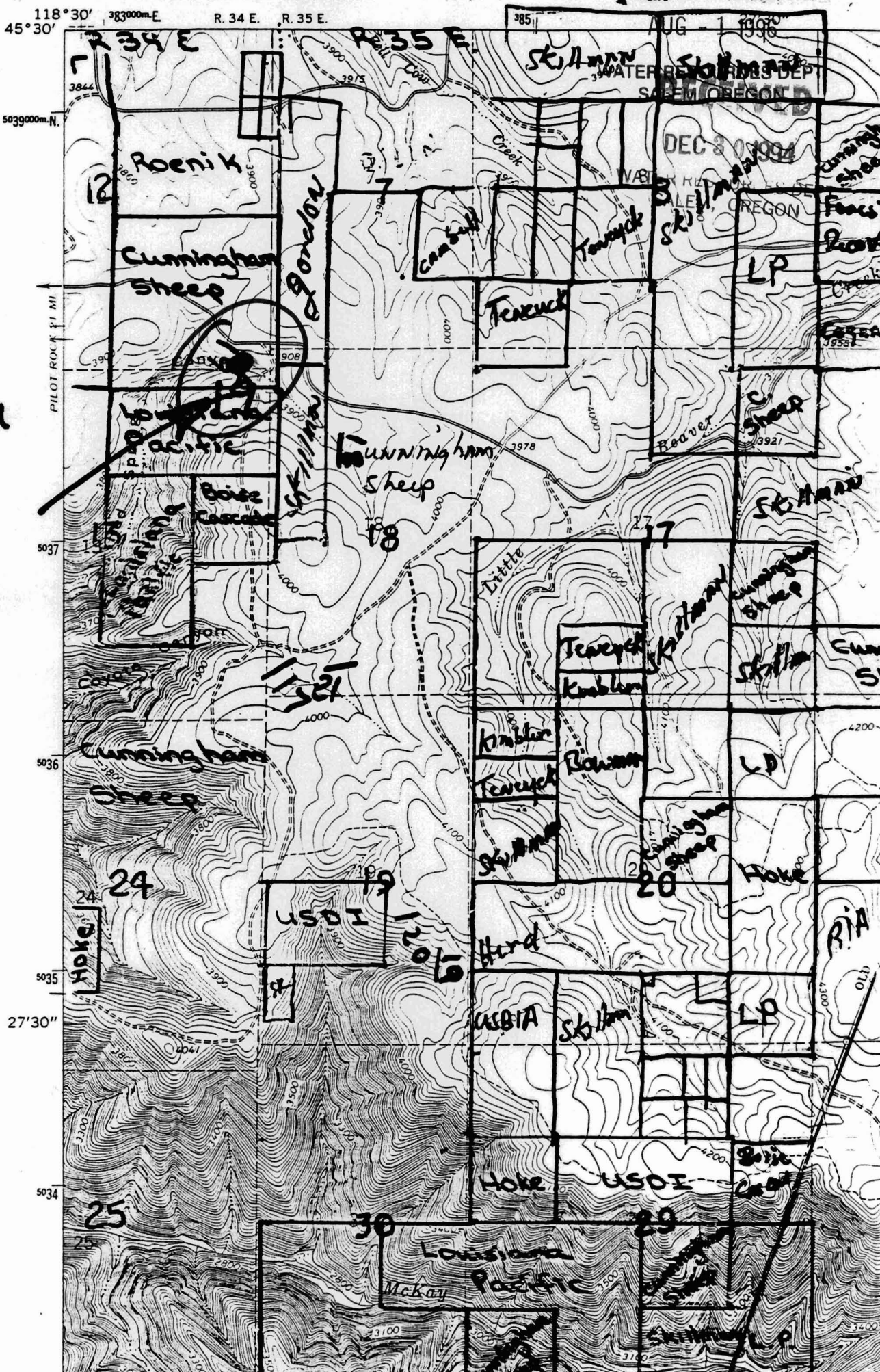
Louisiana Pacific  
McKay

SKIMM L.P.

DEPARTMENT OF THE INTERIOR  
GEOLOGICAL SURVEY

RECEIVED

3



MENCHER  
LAKE  
#19