

RECEIVED

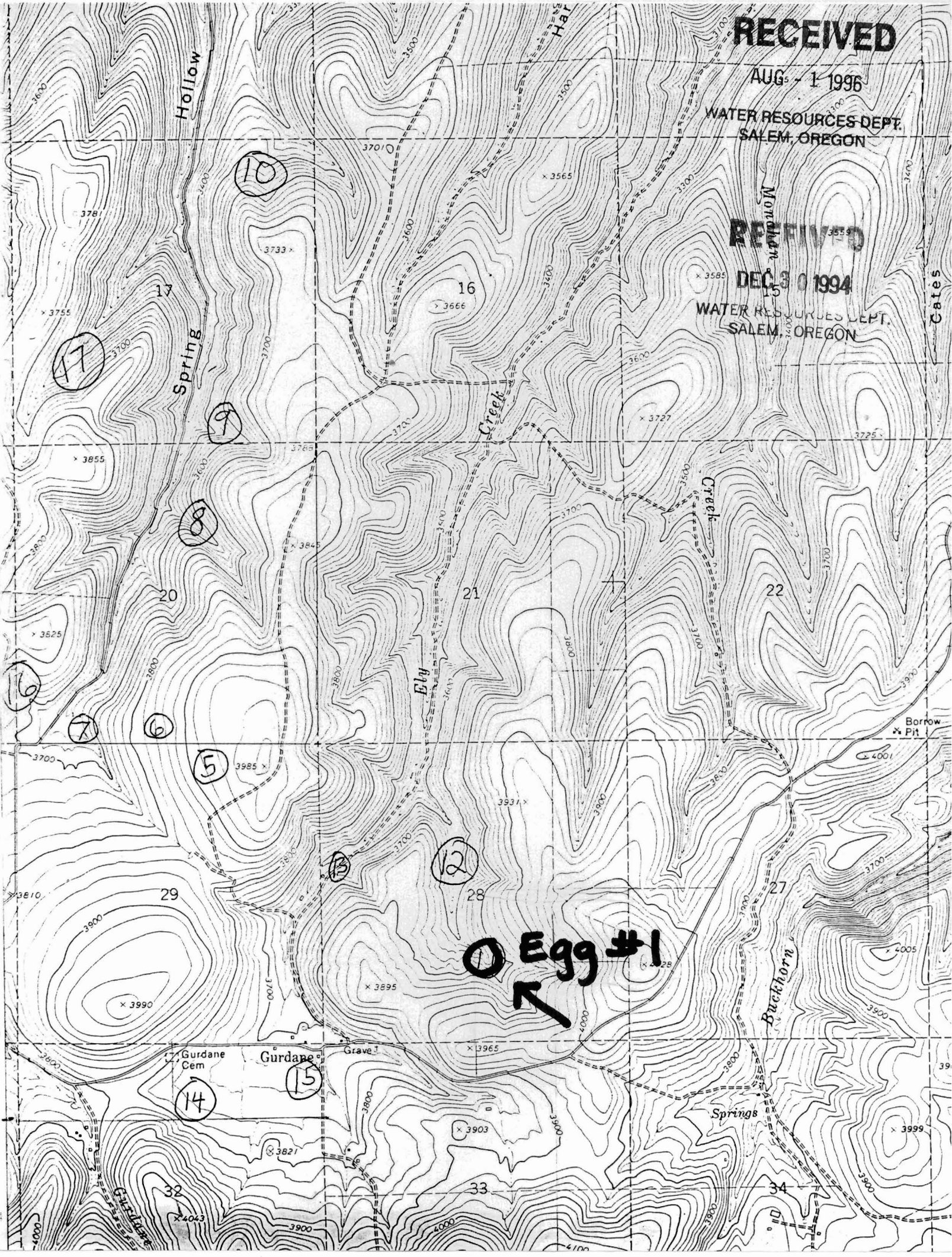
AUG 5 - 1 1996

WATER RESOURCES DEPT.  
SALEM, OREGON

RECEIVED

DEC 30 1994

WATER RESOURCES DEPT.  
SALEM, OREGON



17

10

16

9

8

20

21

22

6

7

6

5

12

28

29

27

14

15

32

33

34

**Egg #1**  
↑

Hollow  
Spring

Ely  
Creek

Buckhorn  
Creek

Buckhorn

Gurdane  
Cem

Gurdane

Grave 1

Springs

Cates

Borrow  
Pit

Childane

Har

34

35

36

37

38

39

40

41

42

43

44

45

46

47

48

3600

3700

3781

3755

3855

3825

3700

3610

3700

3810

3900

3990

3800

4000

4000

3600

3700

3733

3700

3700

3800

3800

3700

3700

3800

3900

3990

3800

3900

3900

3600

3700

3733

3700

3700

3800

3800

3700

3700

3800

3900

3990

3800

3900

3900

3600

3700

3733

3700

3700

3800

3800

3700

3700

3800

3900

3990

3800

3900

3900

3600

3700

3733

3700

3700

3800

3800

3700

3700

3800

3900

3990

3800

3900

3900

3600

3700

3733

3700

3700

3800

3800

3700

3700

3800

3900

3990

3800

3900

3900

3600

3700

3733

3700

3700

3800

3800

3700

3700

3800

3900

3990

3800

3900

3900

3600

3700

3733

3700

3700

3800

3800

3700

3700

3800

3900

3990

3800

3900

3900

3600

3700

3733

3700

3700

3800

3800

3700

3700

3800

3900

3990

3800

3900

3900

3600

3700

3733

3700

3700

3800

3800

3700

3700

3800

3900

3990

3800

3900

3900

3600

3700

3733

3700

3700

3800

3800

3700

3700

3800

3900

3990

3800

3900

3900

3600

3700

3733

3700

3700

3800

3800

3700

3700

3800

3900

3990

3800

3900

3900

3600

3700

3733

3700

3700

3800

3800

3700

3700

3800

3900

3990

3800

3900

3900

3600

3700

3733

3700

3700

3800

3800

3700

3700

3800

3900

3990

3800

3900

3900



RECEIVED

AUG - 1 1996

WATER RESOURCES DEPT.  
SALEM, OREGON

Hollow

Spring

Creek

Creek

Monahan

Cates

Ely

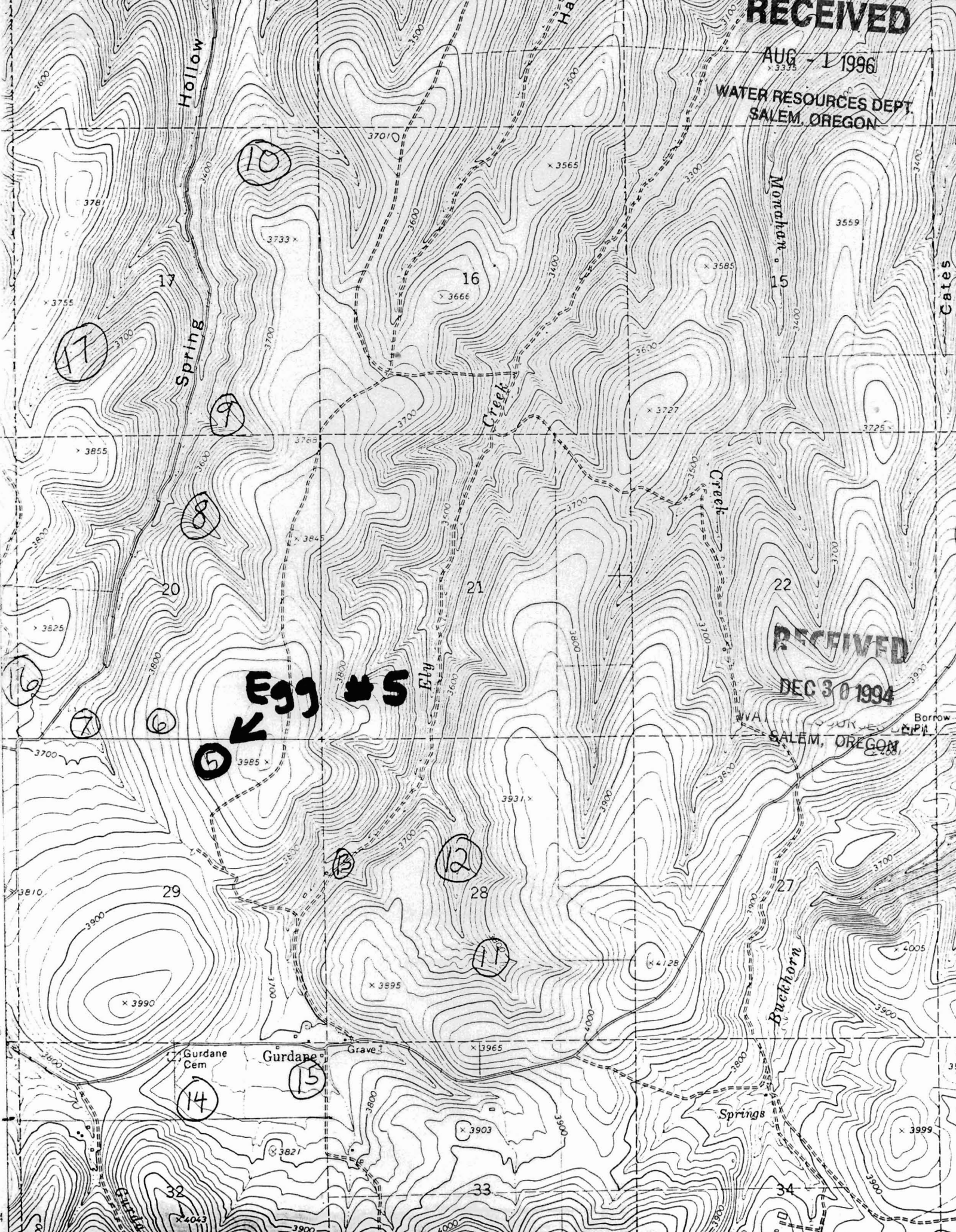
RECEIVED

DEC 30 1994

SALEM, OREGON

**Egg #5**

**5** ←



17

10

16

9

8

20

21

22

16

7

6

5

13

12

28

11

29

27

14

15

32

33

34

Gurdane Cem

Gurdane

Grave 1

Springs

Buckhorn

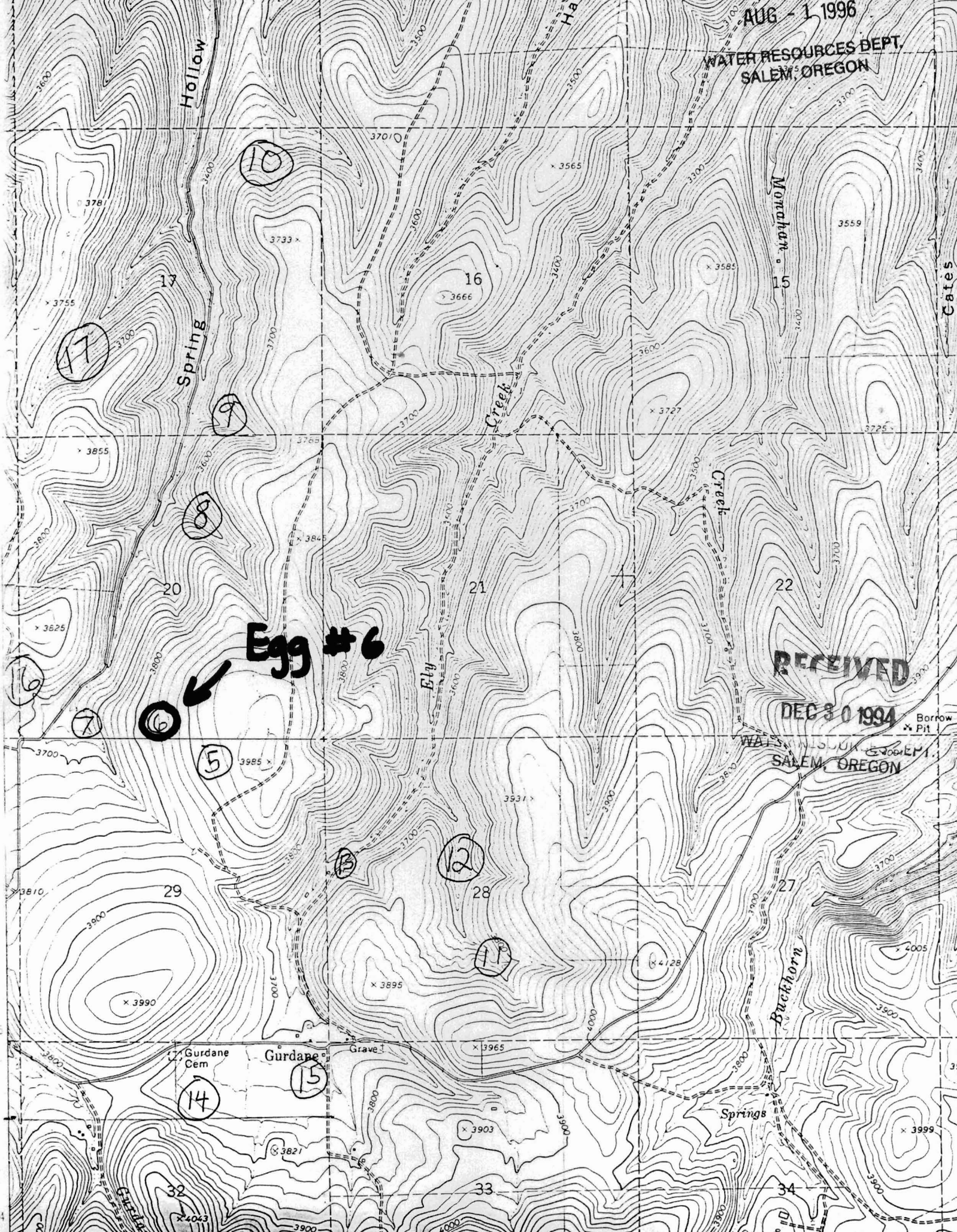
Gurdane

Borrow



AUG - 1 1996

WATER RESOURCES DEPT.  
SALEM, OREGON



RECEIVED

DEC 30 1994

WATER RESOURCES DEPT.  
SALEM, OREGON

Borrow  
x Pit



RECEIVED

AUG - 1 1996

WATER RESOURCES DEPT.  
SALEM, OREGON

RECEIVED

DEC 30 1994

WATER RESOURCES DEPT.  
SALEM, OREGON

Hollow

Spring

Creek

Ely

Creek

Buckhorn

Springs

10

16

15

17

17

9

8

20

21

Egg #7

7

6

5

12

28

27

29

13

11

14

15

32

33

34

Gurdane Cem

Gurdane

Grave 1

Gurdane

Springs

Borrow

x P11

x 4005

x 3999

x 3965

x 3931

x 3895

x 3845

x 3727

x 3700

x 3666

x 3565

x 3333

378

3733

3755

3700

3765

3625

3800

3810

3990

3895

3965

3903

3821

4063

3905

4100

3559

3725

3700

3920

4001

3700

3500

3900

Cares

396



RECEIVED

AUG - 1 1996

WATER RESOURCES DEPT.  
SALEM, OREGON

RECEIVED

DEC 30 1994

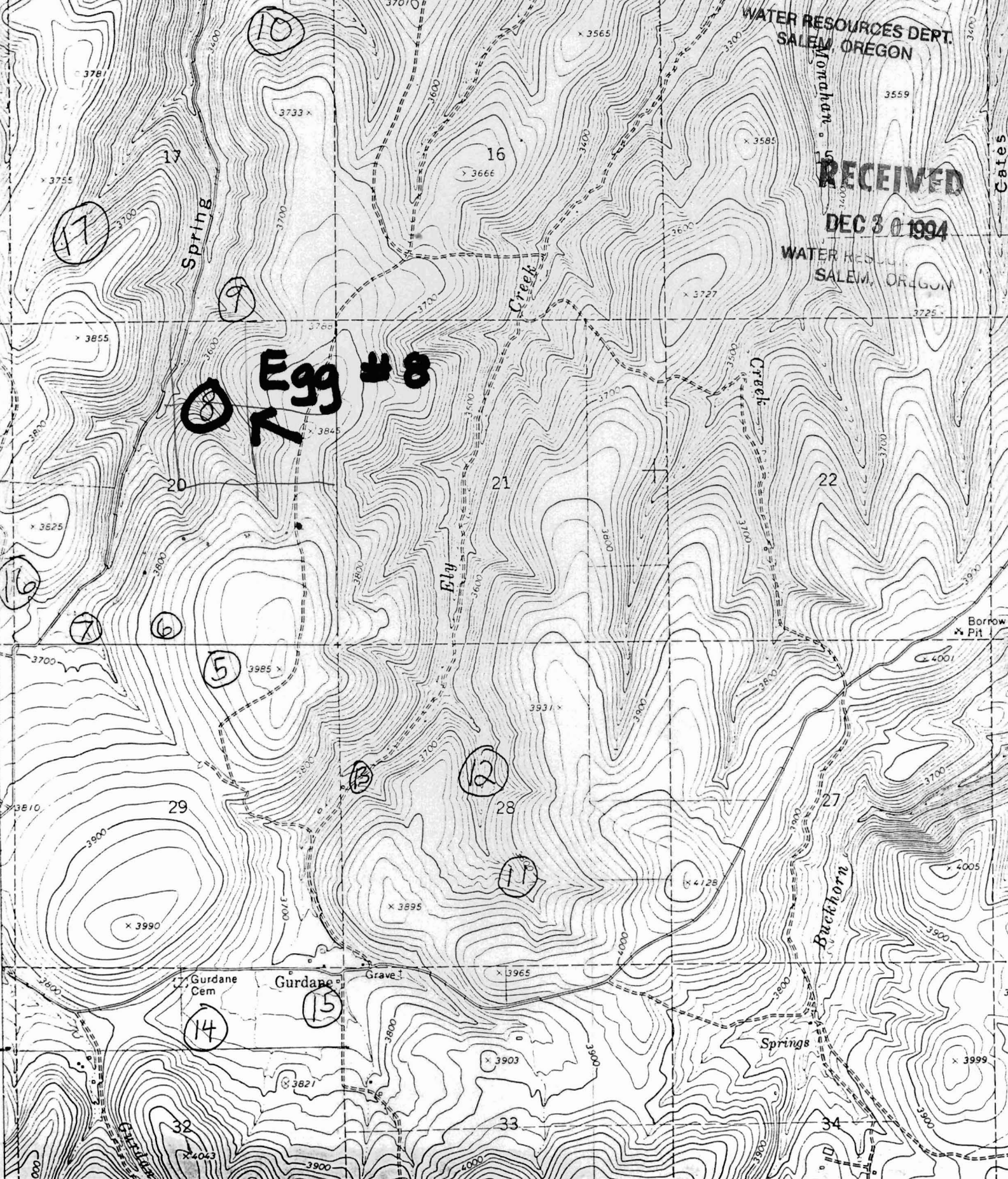
WATER RESOURCES DEPT.  
SALEM, OREGON

Hollow  
Spring

Har

Cates

Egg # 8  
7





RECEIVED

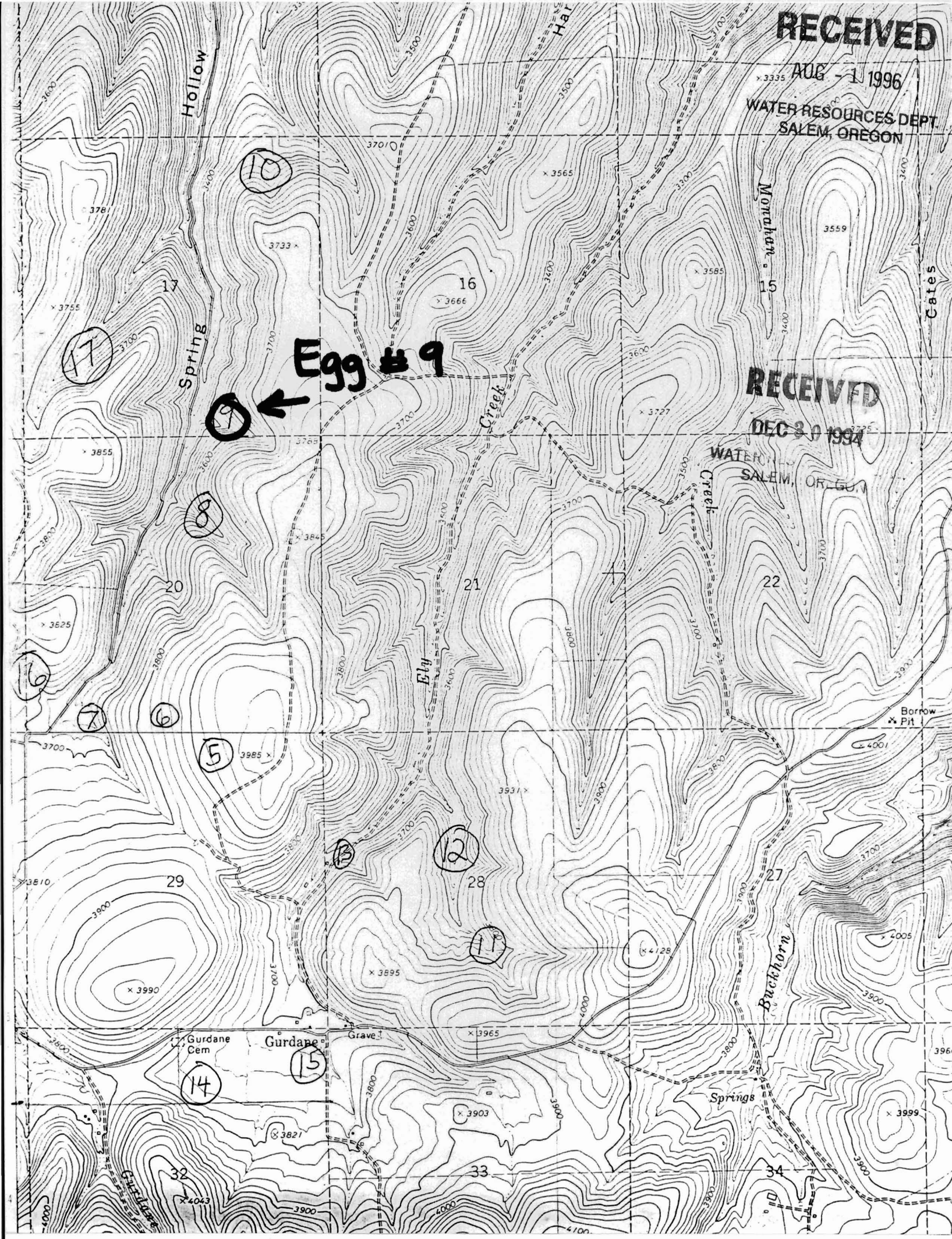
AUG - 1 1996

WATER RESOURCES DEPT.  
SALEM, OREGON

RECEIVED

DEC 30 1994

WATER RESOURCES DEPT.  
SALEM, OREGON





RECEIVED

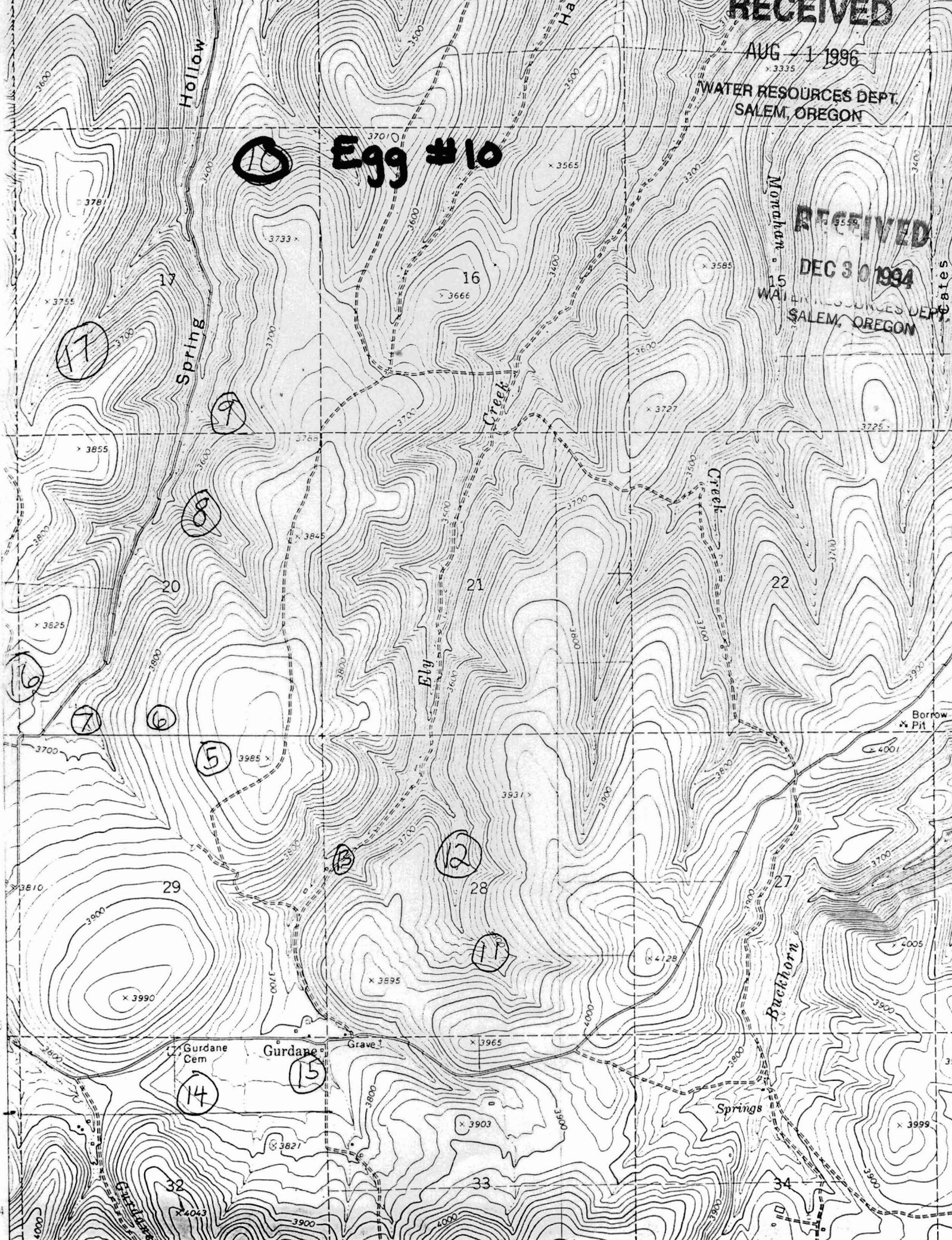
AUG 1 1996

WATER RESOURCES DEPT.  
SALEM, OREGON

RECEIVED

DEC 30 1994

WATER RESOURCES DEPT.  
SALEM, OREGON





RECEIVED

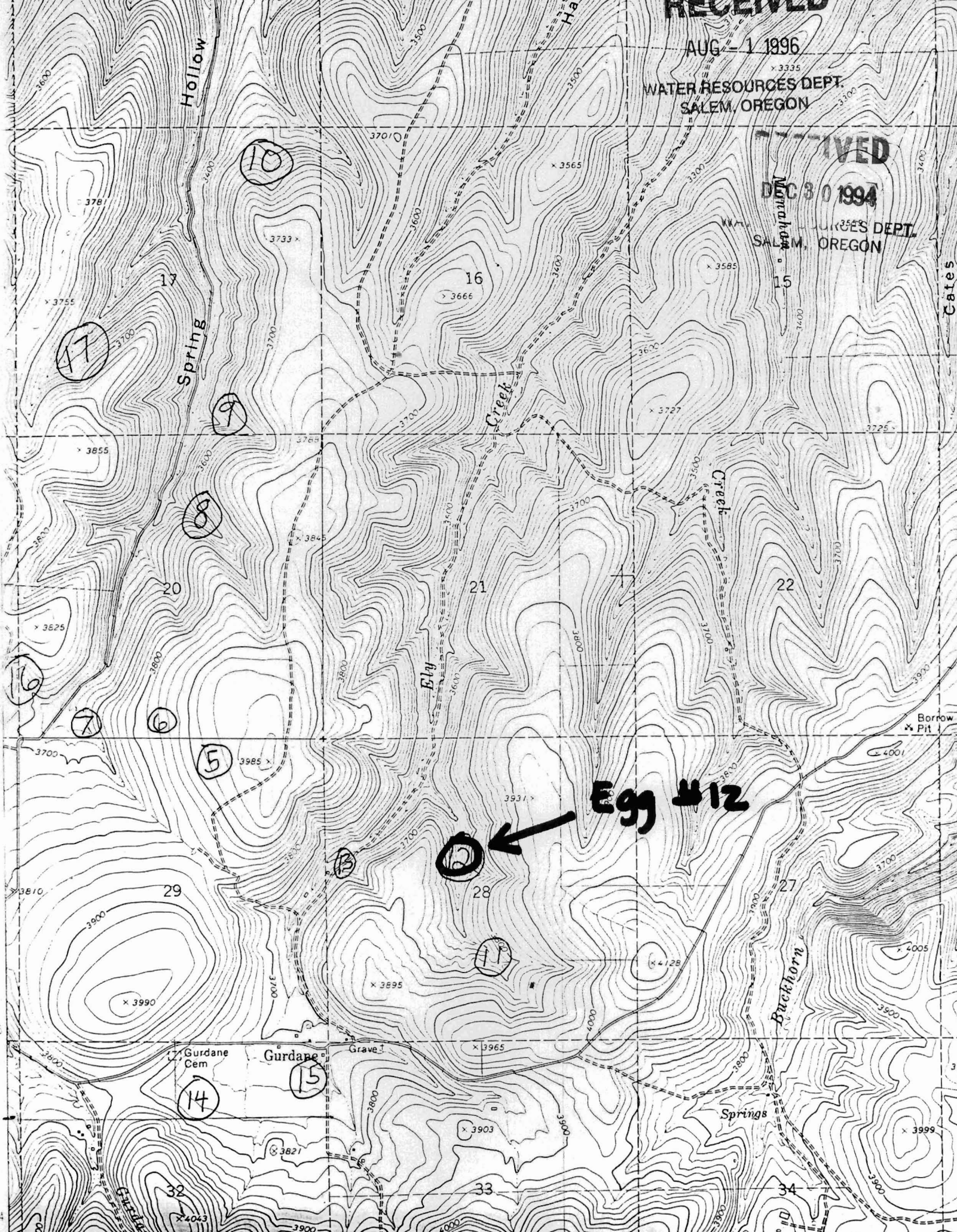
AUG - 1 1996

WATER RESOURCES DEPT.  
SALEM, OREGON

RECEIVED

DEC 30 1994

WATER RESOURCES DEPT.  
SALEM, OREGON



**Egg #12**

12



Hollow

Spring

Elay

Creek

Buckhorn

Gurdane Cem

Gurdane

Grave

Springs

Cates

Borrow Pit



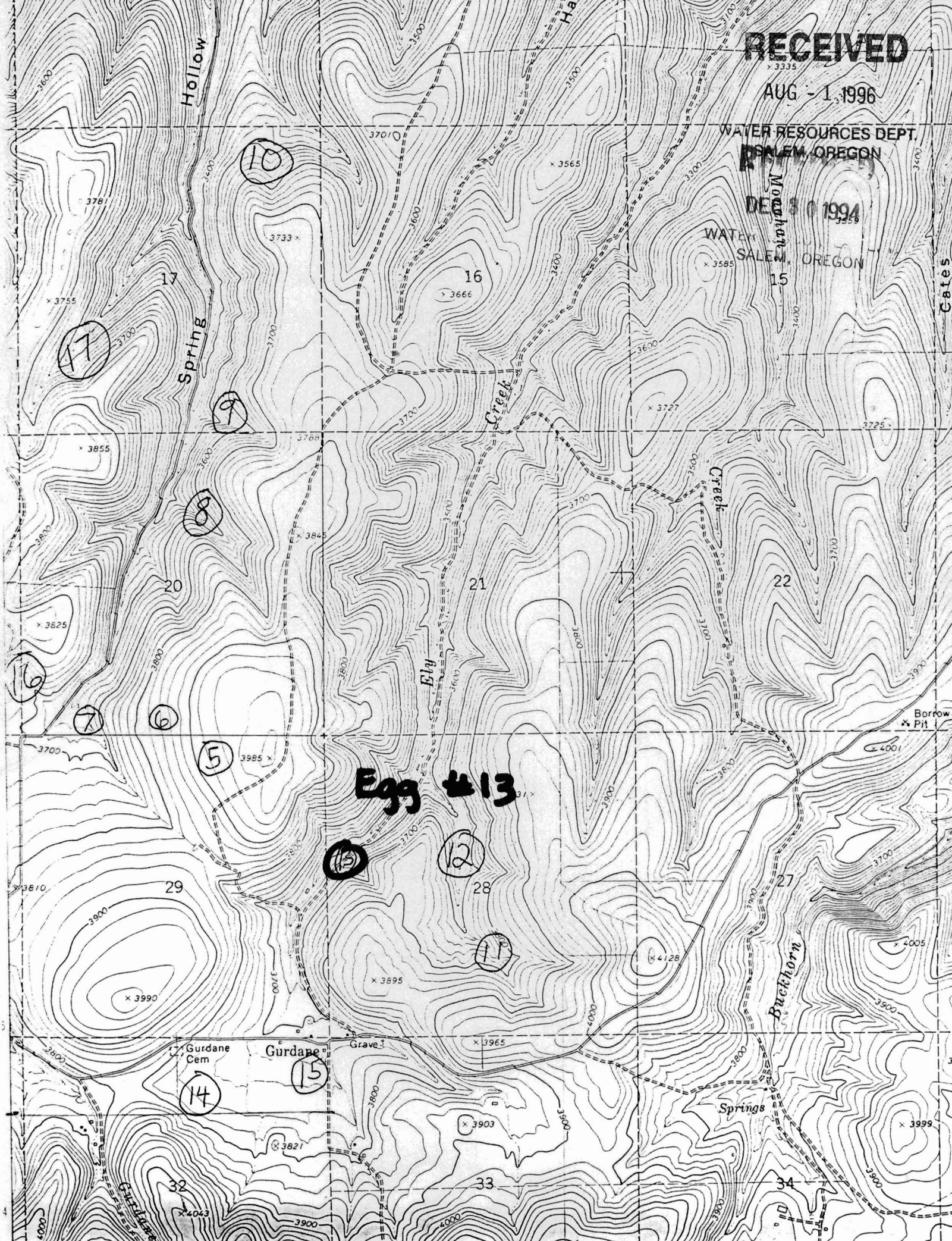
RECEIVED

AUG - 1, 1996

WATER RESOURCES DEPT.  
SALEM, OREGON

DEC 8 1994

WATER RESOURCES DEPT.  
SALEM, OREGON





RECEIVED

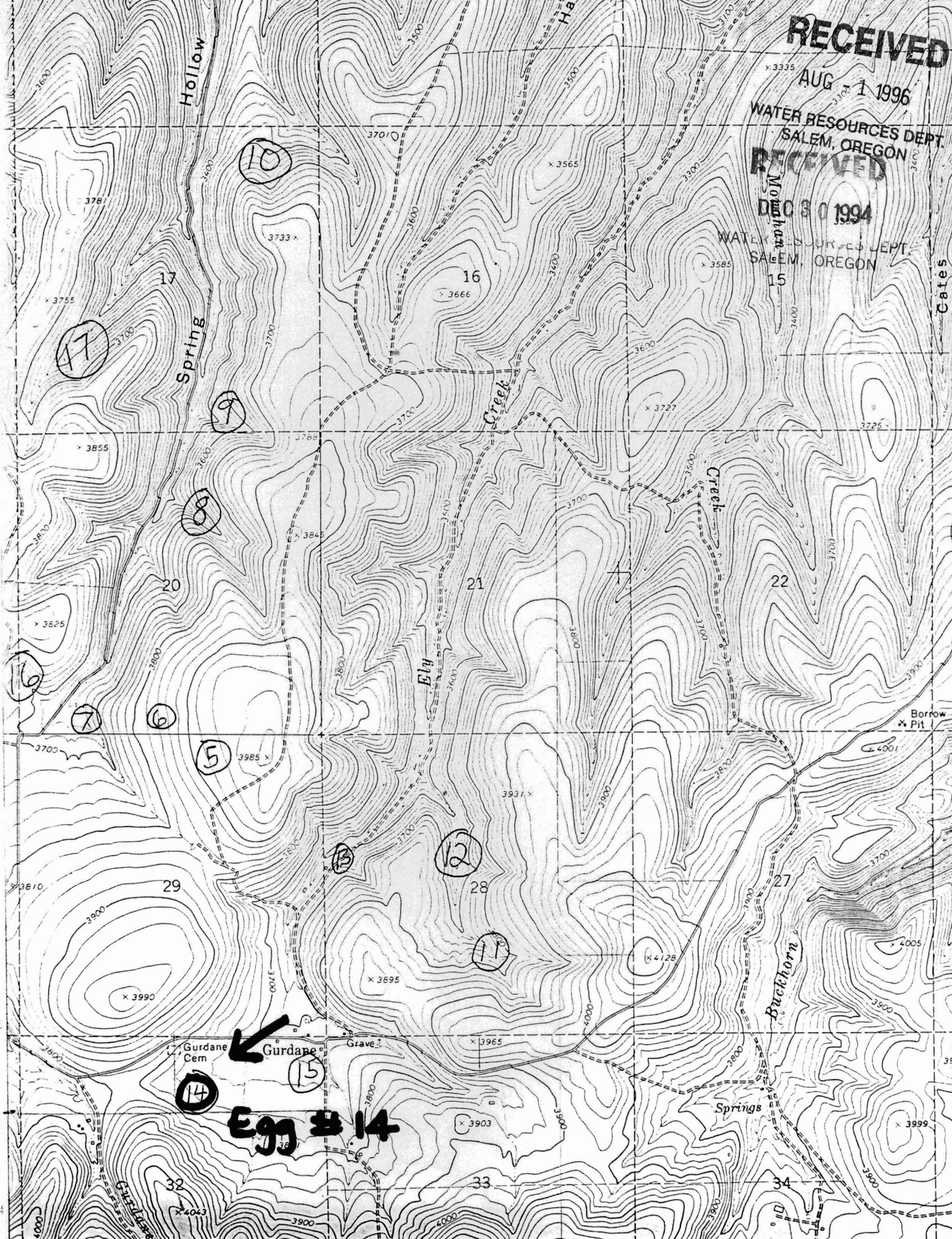
AUG 1 1996

WATER RESOURCES DEPT.  
SALEM, OREGON

RECEIVED

DEC 30 1994

WATER RESOURCES DEPT.  
SALEM, OREGON



17

10

16

19

20

21

22

6

7

8

5

12

28

11

14

15

Gurdane Cem

Gurdane

Grave

Egg # 14

Springs

Buckhorn

Ely

Creek

Creek

Hollow

Har

Cates

Borrow  
x PH

