

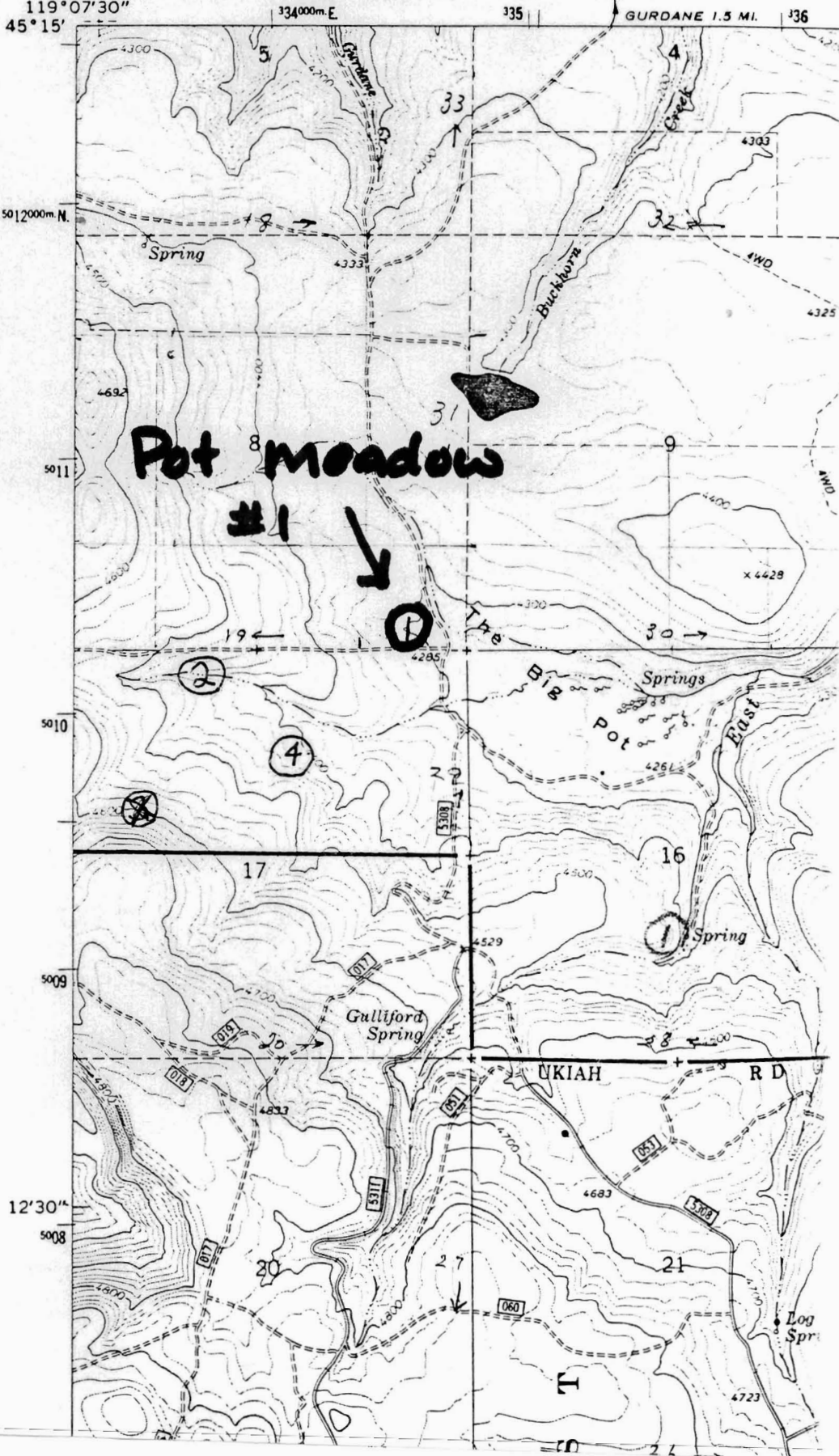
HOODLUM CANYON
SW

UNITED STATES
DEPARTMENT OF THE INTERIOR
GEOLOGICAL SURVEY
MODIFIED FOR USDA FOREST SERVICE USE

RECEIVED

DEC 30 1994

WATER RESOURCES DEPT.
SALEM, OREGON



RECEIVED

AUG - 1 1996

WATER RESOURCES DEPT.
SALEM OREGON

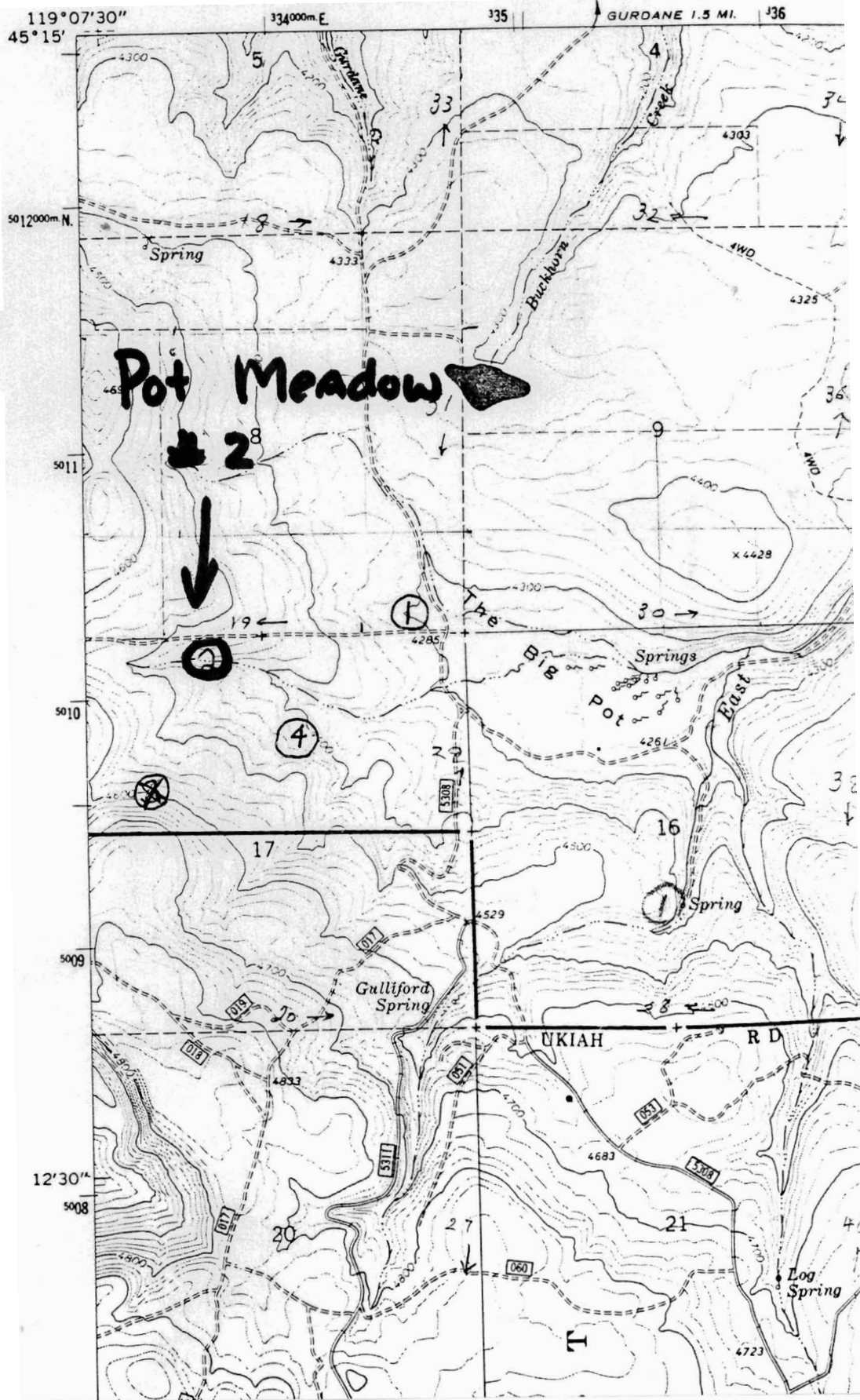
RECEIVED

DEC 30 1994

UNITED STATES
DEPARTMENT OF THE INTERIOR
GEOLOGICAL SURVEY
MODIFIED FOR USDA FOREST SERVICE USE

WATER RESOURCES DEPT.
SALEM, OREGON

MODIFIED BY
2/7/91 SW
(MOORE CANYON)



RECEIVED

AUG - 1 1996

WATER RESOURCES DEPT.
SALEM, OREGON

MATLOCK PRAIRIE QUADRANGLE
OREGON
7.5 MINUTE SERIES (TOPOGRAPHIC)

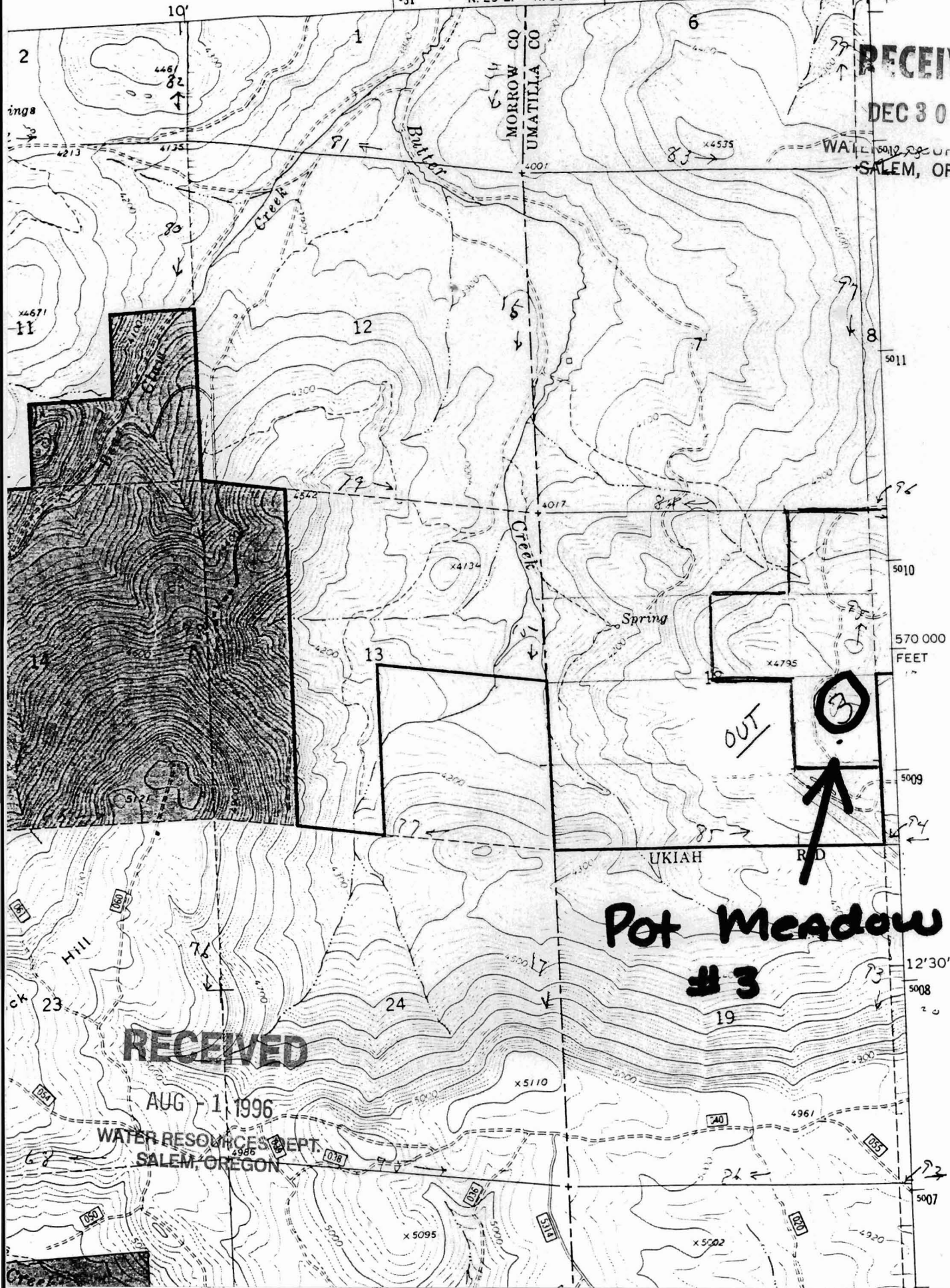
2174 1 SE
(GURDANE)

331 R. 29 E. R. 30 E. 2 350 000 FEET 333 119°07'30" 45°15'

RECEIVED

DEC 30 1994

WATER RESOURCES DEPT.
SALEM, OREGON



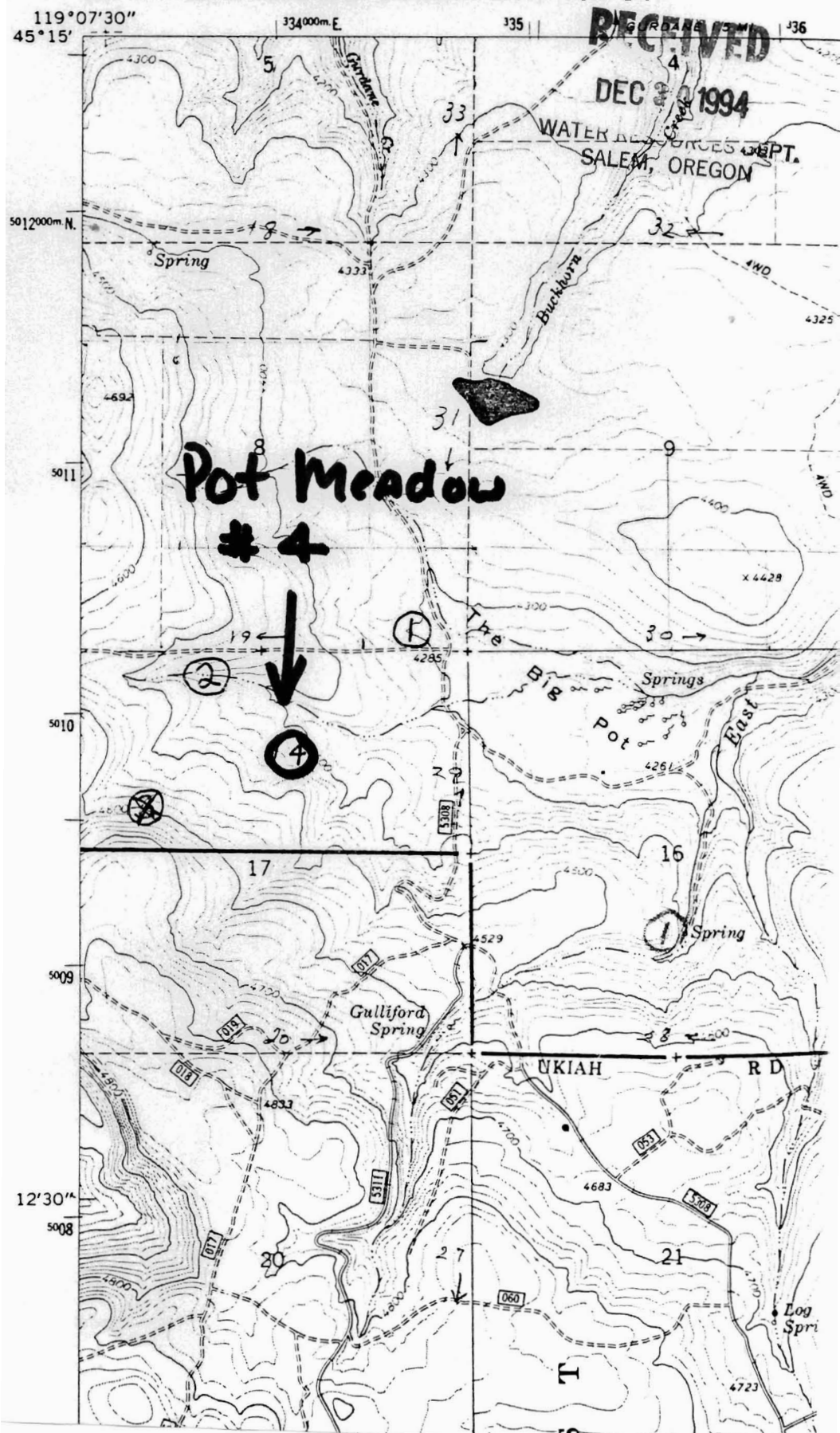
RECEIVED

AUG 1 1996

WATER RESOURCES DEPT.
SALEM, OREGON

MODULUM CANYON
21° 15' N
119° 07' 30" W

UNITED STATES
DEPARTMENT OF THE INTERIOR
GEOLOGICAL SURVEY
MODIFIED FOR USDA FOREST SERVICE USE



RECEIVED

DEC 30 1994

WATER RESOURCES DEPT.
SALEM, OREGON

Pot Meadow
#4



RECEIVED

AUG - 1 1996

WATER RESOURCES DEPT.
SALEM, OREGON

RECEIVED

HOODLUM CANYON QUADRANGLE 1934

OREGON

7.5 MINUTE SERIES (TOPOGRAPHIC)

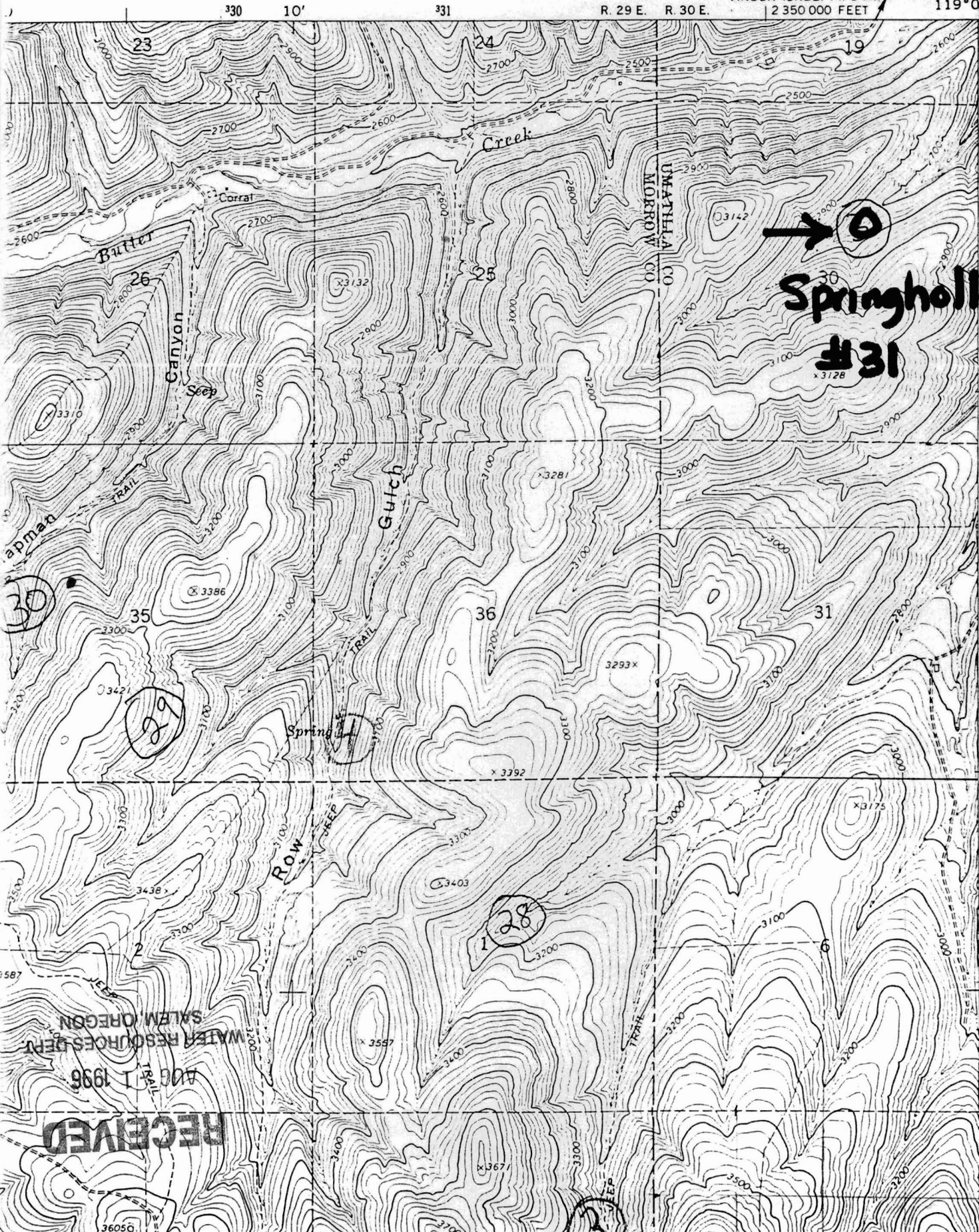
VINSON (OREG. 74) 8 MI.

R. 29 E. R. 30 E.

2 350 000 FEET

119°07'30"

45°22'30"



→ 30
Springhollow
#31

WATER RESOURCES DEPT.
 SALEM, OREGON
 AUG 11 1996

RECEIVED

5026

5025

620 000 FEET

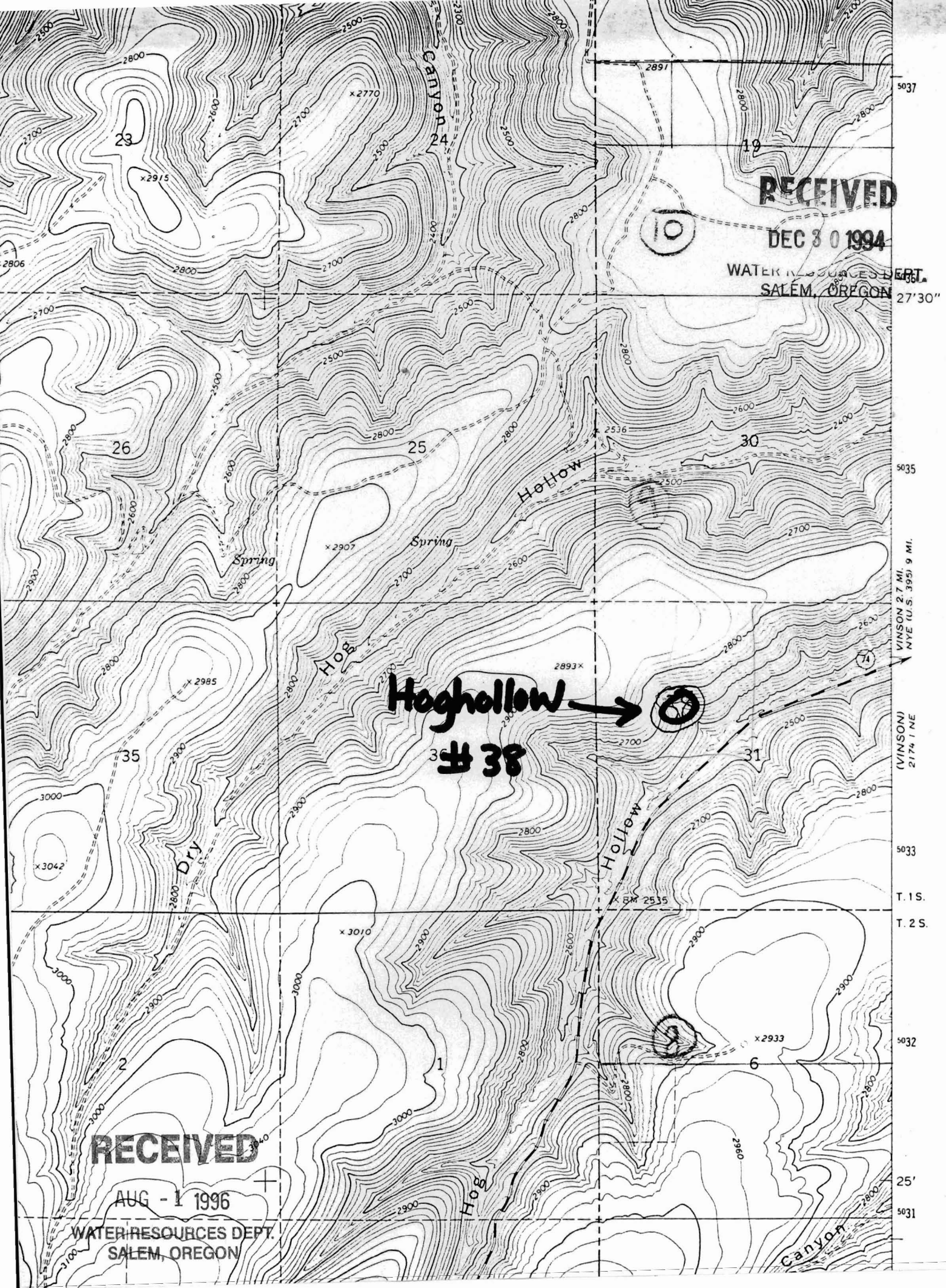
5024

T. 2 S.

T. 3 S.

5022
20'

5021



RECEIVED

DEC 30 1994

WATER RESOURCES DEPT.
SALEM, OREGON

Hog Hollow →
38

RECEIVED

AUG - 1 1996

WATER RESOURCES DEPT.
SALEM, OREGON

5037
5035
5033
5032
5031

(VINSON)
2174 1 NE

T. 1 S.
T. 2 S.

25'

RECEIVED

DEC 30 1994

WATER RESOURCES DEPT.
SALEM, OREGON

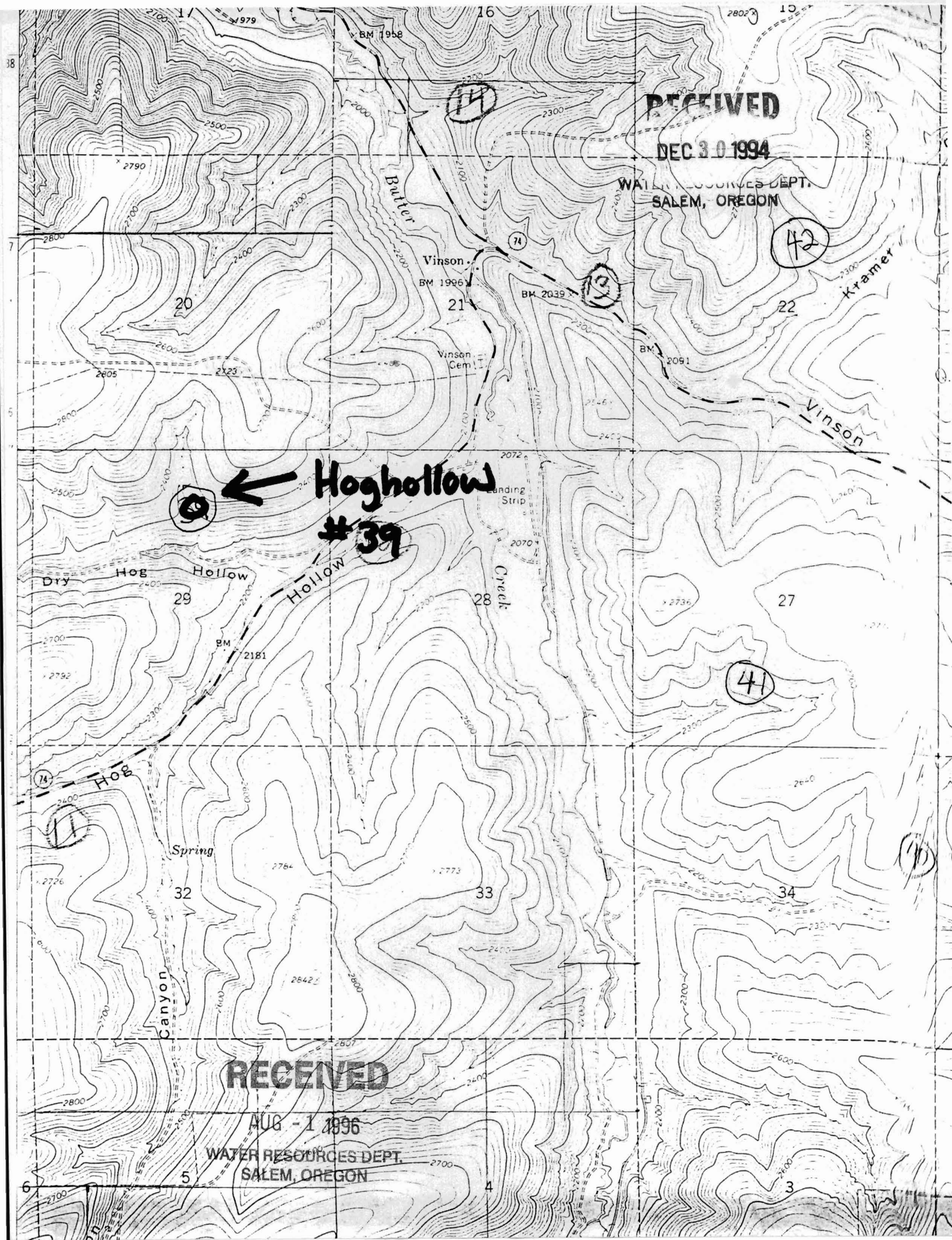
Hog Hollow #39



RECEIVED

AUG - 1 1996

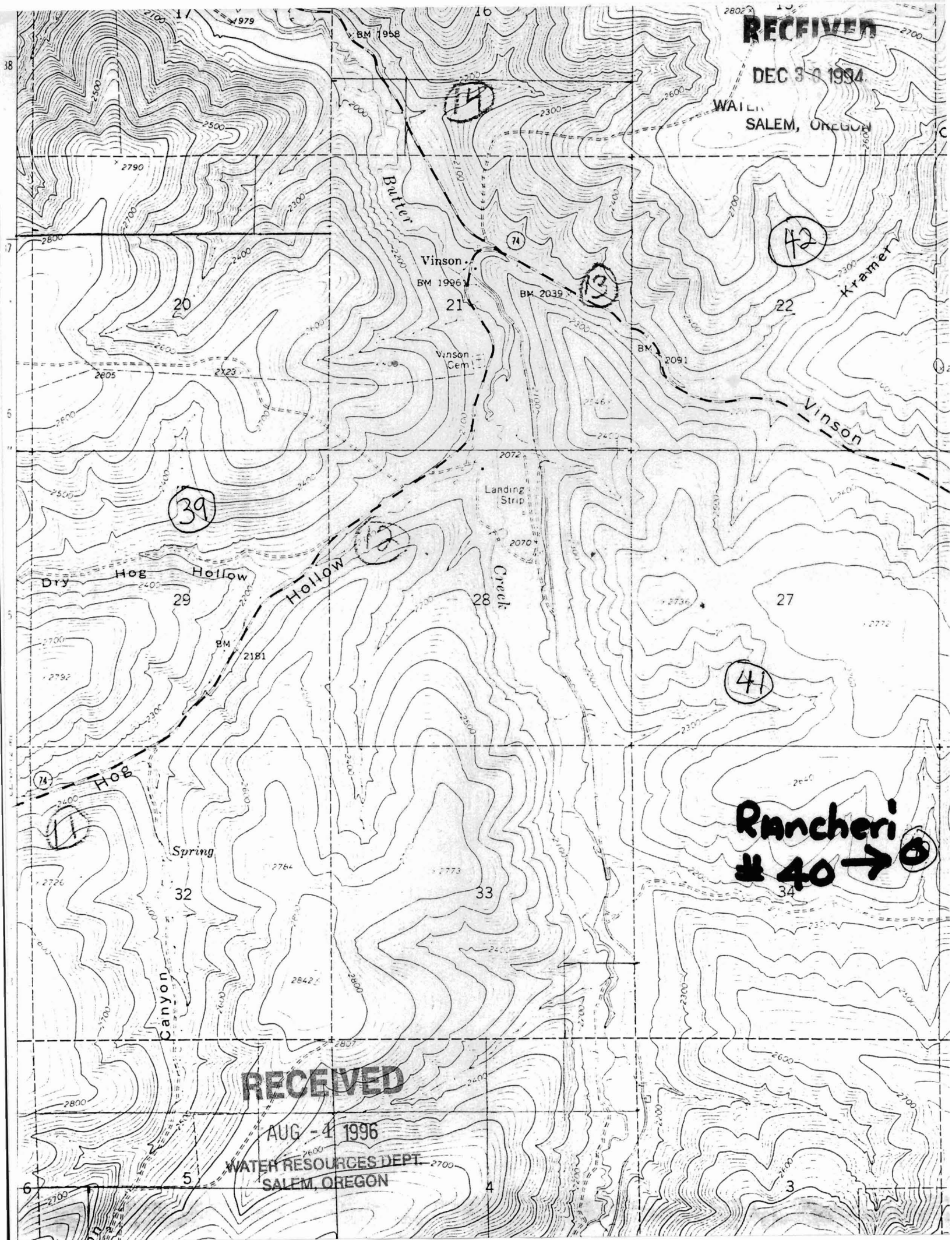
WATER RESOURCES DEPT.
SALEM, OREGON



RECEIVED

DEC 30 1994

WATER RESOURCES DEPT.
SALEM, OREGON



RECEIVED

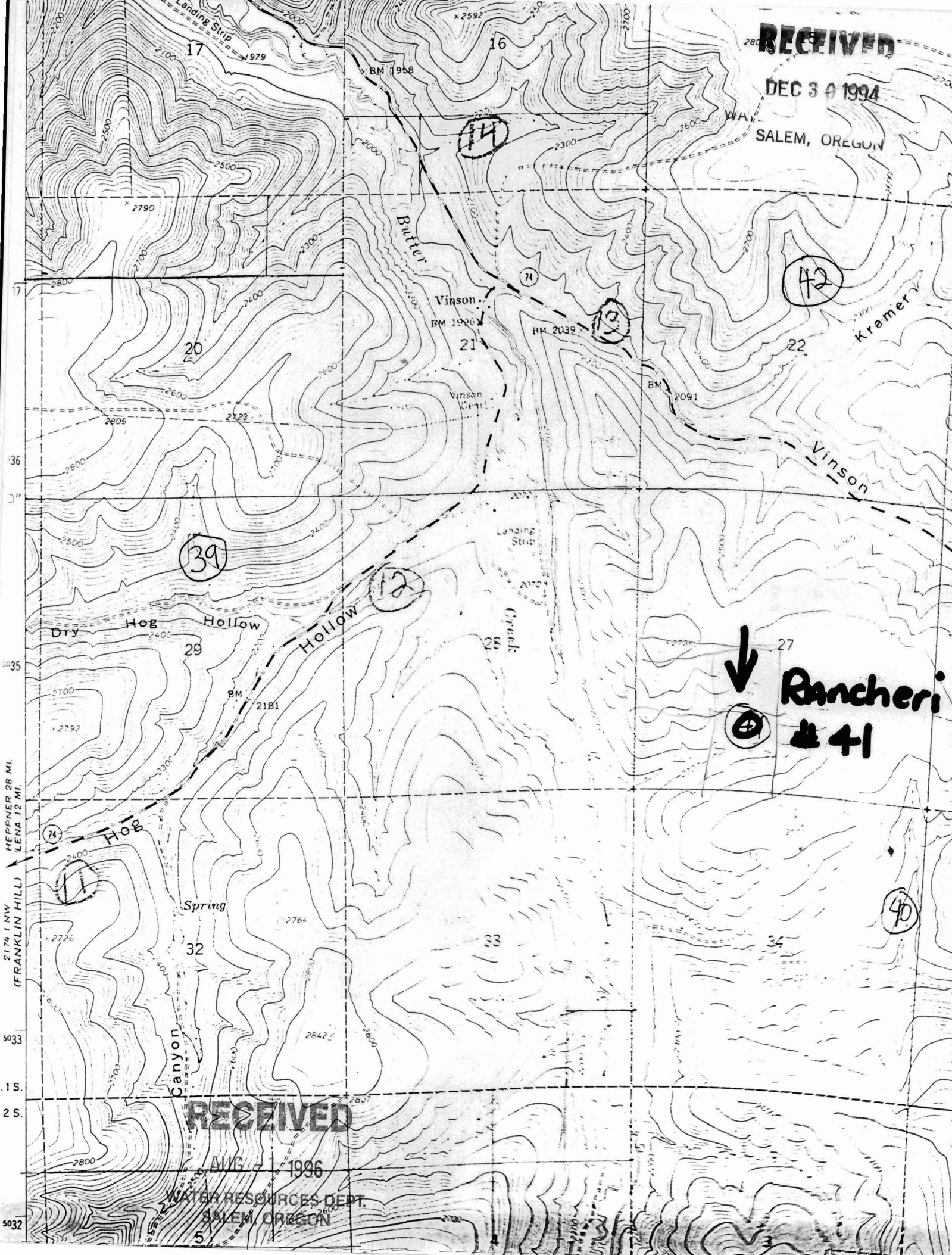
AUG - 4 1996

WATER RESOURCES DEPT.
SALEM, OREGON

RECEIVED

DEC 30 1994

SALEM, OREGON



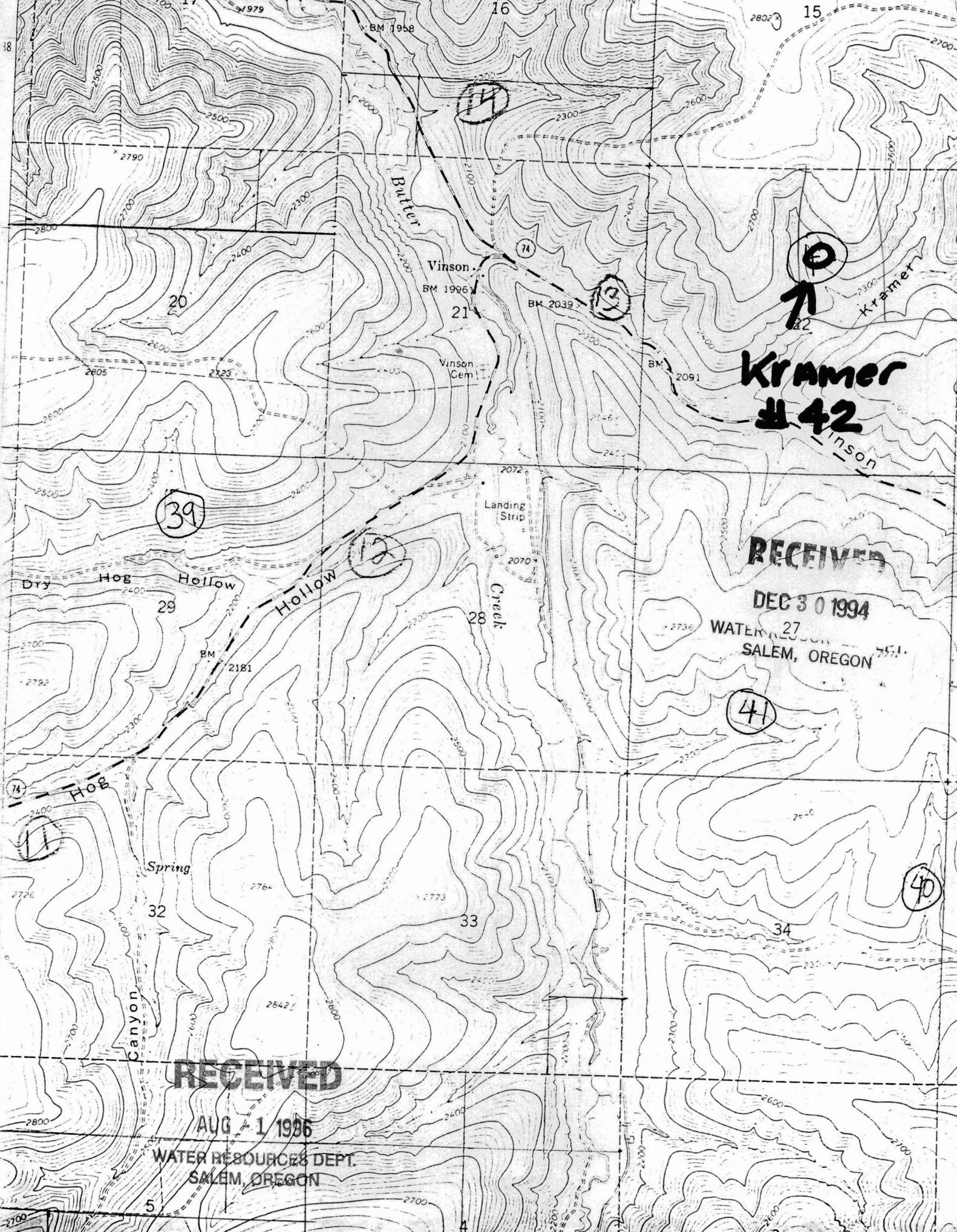
HEPPNER 28 MI.
LENA 12 MI.
21 7/4 1 NW
(FRANKLIN HILL)

T. 15 S.
T. 2 S.
5033
5032

RECEIVED

AUG 7 1996

WATER RESOURCES DEPT.
SALEM, OREGON



Kramer
#42

RECEIVED

DEC 30 1994

WATER RESOURCES DEPT.
SALEM, OREGON

RECEIVED

AUG 1 1996

WATER RESOURCES DEPT.
SALEM, OREGON