

Sheepcamp  
127

⊗ ← ⊙ 25

⊙ 26

⊙ 24

⊙ 19

⊙ 18

⊙ 22

⊙ 24

⊙ 23

⊙ 21

⊙ 20

⊙ 25

⊙ 36

⊙ 31

RECEIVED  
DEC 30 1994  
WATER RESOURCES DEPT.  
SALEM, OREGON

RECEIVED

AUG - 1 1996

WATER RESOURCES DEPT.  
SALEM, OREGON

MORROW CO  
UNATILLA CO

(GURDANE)  
2174 1 SE

5019

5018

17'30"

5017

5016

5015

5014

GURDANE 1 MI.

Butter Canyon

Gurdane

Butter Deep Trail

Creek 30

Butter  
3948

3863

3904

3925

3667

3707

3922

3668

3655

3700

3838

3764

3764

3800

3812

3700

3700

3600

3700

35

3904

3900

3900

3905

3900

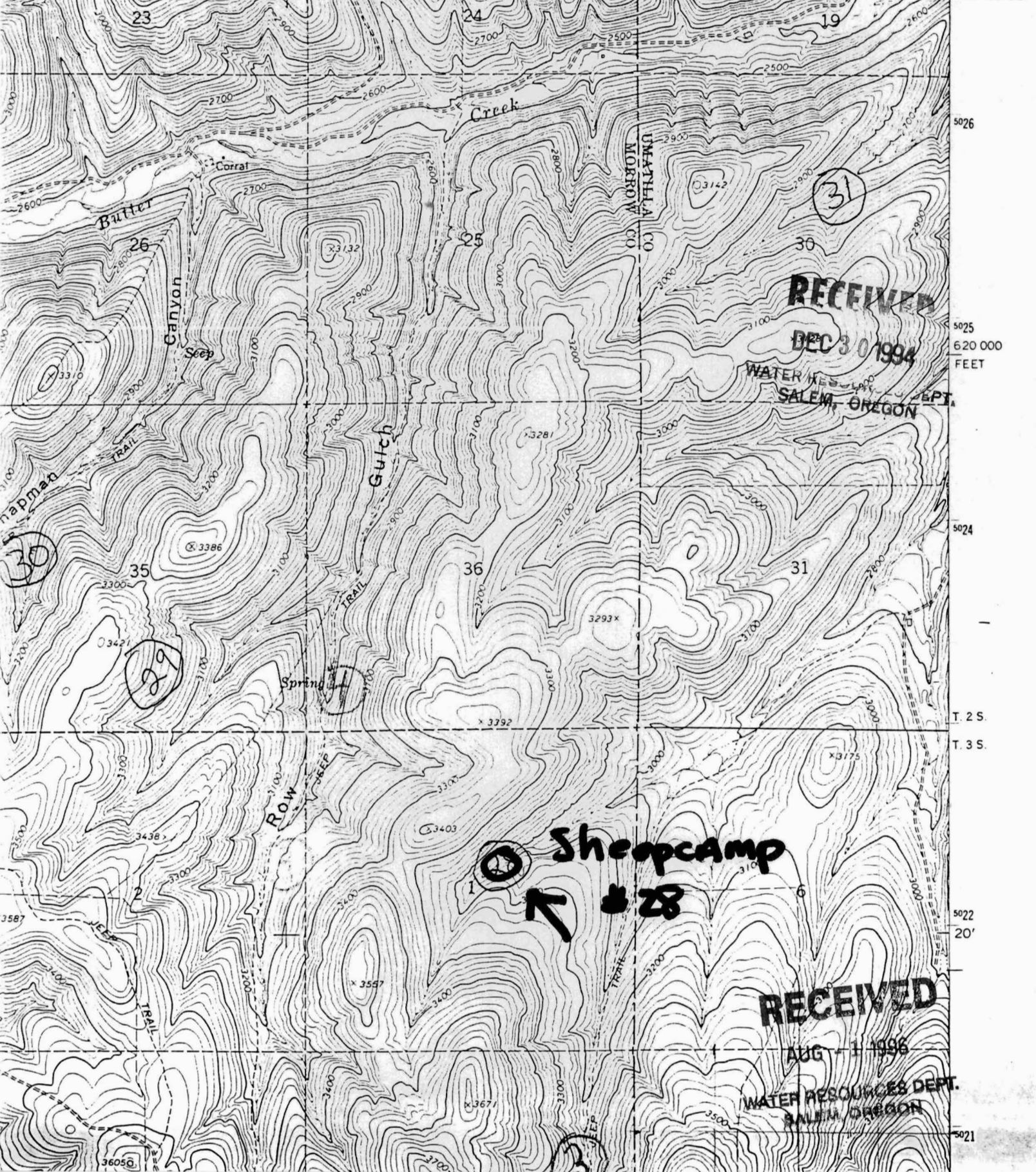
3900

4200

HOODLUM CANYON QUADRANGLE  
OREGON  
7.5 MINUTE SERIES (TOPOGRAPHIC)

2 1/4" INE  
(VINSON)

LJ 330 10' 331 R. 29 E. R. 30 E. VINSON (OREG. 74) 8 MI. 2 350 000 FEET 119°07'30" 45°22'30"



HOODLUM CANYON QUADRANGLE  
OREGON

7.5 MINUTE SERIES (TOPOGRAPHIC)

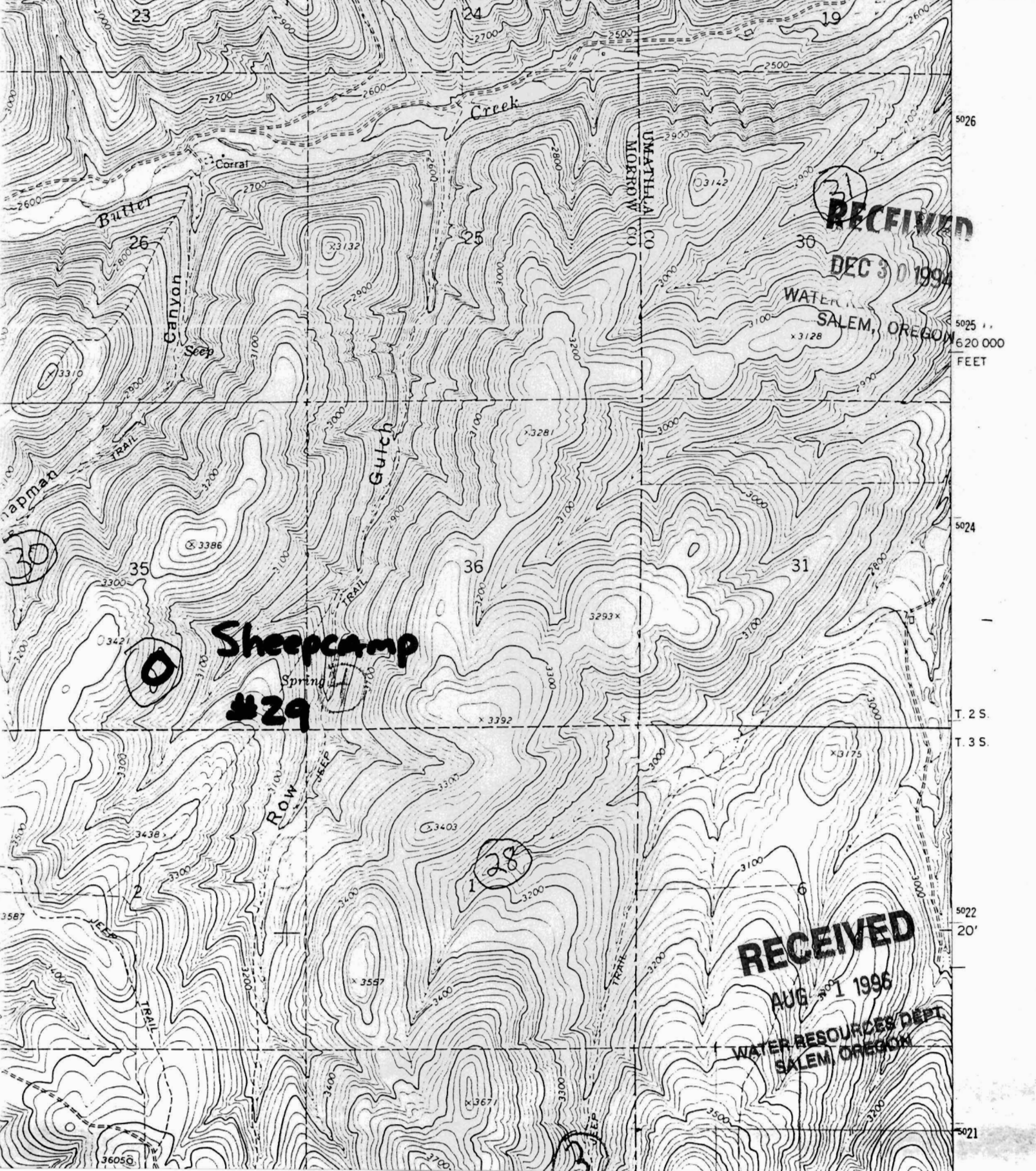
VINSON (OREG. 74) 8 MI.

2 350 000 FEET

119°07'30"

2174 1 NE  
(VINSON)

LJ 330 10' 331 R. 29 E. R. 30 E. 45°22'30"



RECEIVED  
DEC 30 1994

WATER RESOURCES DEPT.  
SALEM, OREGON  
6 20 000 FEET

Sheepcamp  
Spring  
#29

RECEIVED  
AUG 30 1996  
WATER RESOURCES DEPT.  
SALEM, OREGON

5026

5025  
6 20 000 FEET

5024

T. 2 S.

T. 3 S.

5022  
20'

5021

HOODLUM CANYON QUADRANGLE  
OREGON

7.5 MINUTE SERIES (TOPOGRAPHIC)

VINSON (OREG. 7 1/2' X 7 1/2' MI.)

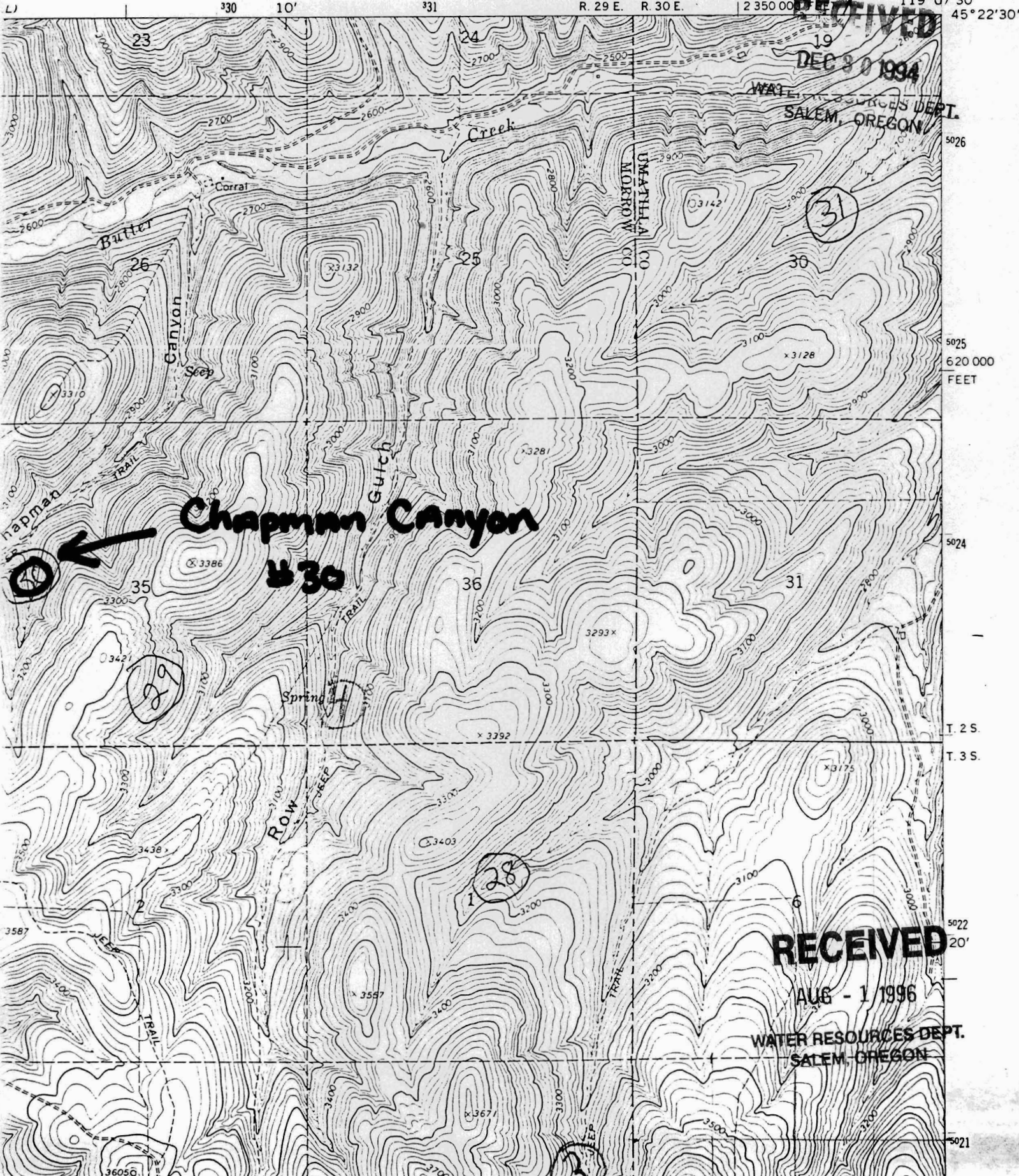
R. 29 E. R. 30 E.

2 350 000

119°07'30"

45°22'30"

2174 1 NE  
(VINSON)



**RECEIVED**  
DEC 30 1994

WATER RESOURCES DEPT.  
SALEM, OREGON

5026

5025  
6 20 000  
FEET

5024

T. 2 S.

T. 3 S.

5022  
20'

5021

**RECEIVED**

AUG - 1 1996

WATER RESOURCES DEPT.  
SALEM, OREGON

**Chapman Canyon**

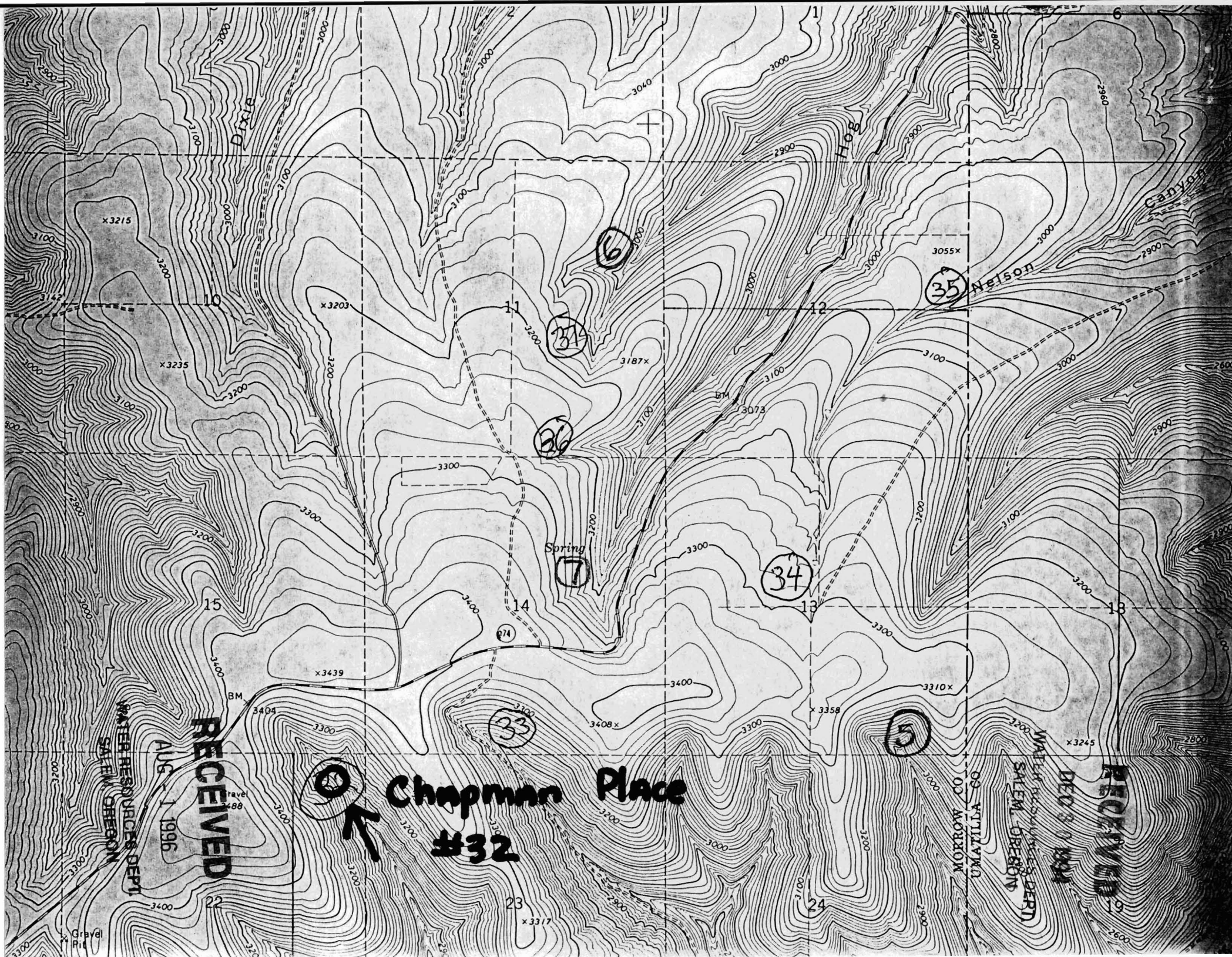
**30**

**30**

**29**

**28**

**2**



RECEIVED  
AUG 1 1996

RECEIVED  
DEC 3 0 1994

Chapman Place  
#32



35

34

36

17

34

33

35

Dixie

Hog

Nelson

Canyon

Spring

WATER RESOURCES DEPT  
SALEM OREGON

WATER RESOURCES DEPT  
SALEM OREGON

WATER RESOURCES DEPT  
SALEM OREGON

Gravel Pit

Gravel Pit

x3215

x3235

x3203

3187x

3055x

x3439

BM 3404

3408x

x3358

3310x

x3245

x3317

3400

23

24

22

11

12

15

14

13

18

10

3040

3000

2900

2960

2900

2900

2900

2800

2600

3100

3100

3100

3100

3100

3100

3100

3000

3000

3000

3000

3000

3000

3000

3000

3000

3000

3000

3000

3000

3000

3000

3000

3000

3000

3000

3000

3000

3000

3000

3000

3000

3000

3000

3000

3000

3000

3000

3000

3000

3000

3000

3000

3000

3000

3000

3000

3000

3000

3000

3000

3000

3000

3000

3000

3000

3000

3000

3000

3000

3000

3000

3000

3000

3000

3000

3000

3000

3000

3000

3000

3000

3000

3000

3000

3000

3000

3000

3000

3000

3000

3000

3000

3000

3000

3000

3000

3000

RECEIVED

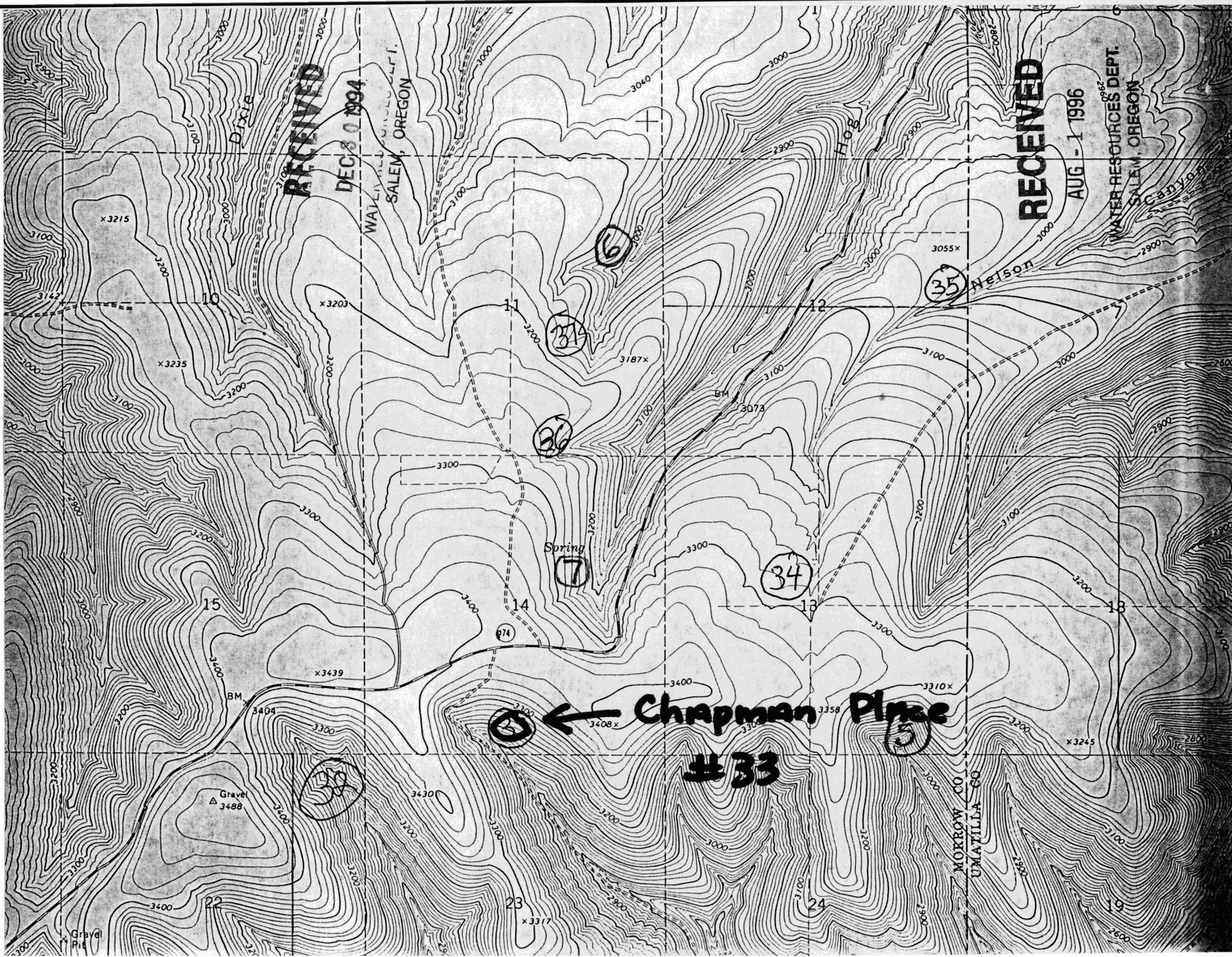
DEC 8 1994

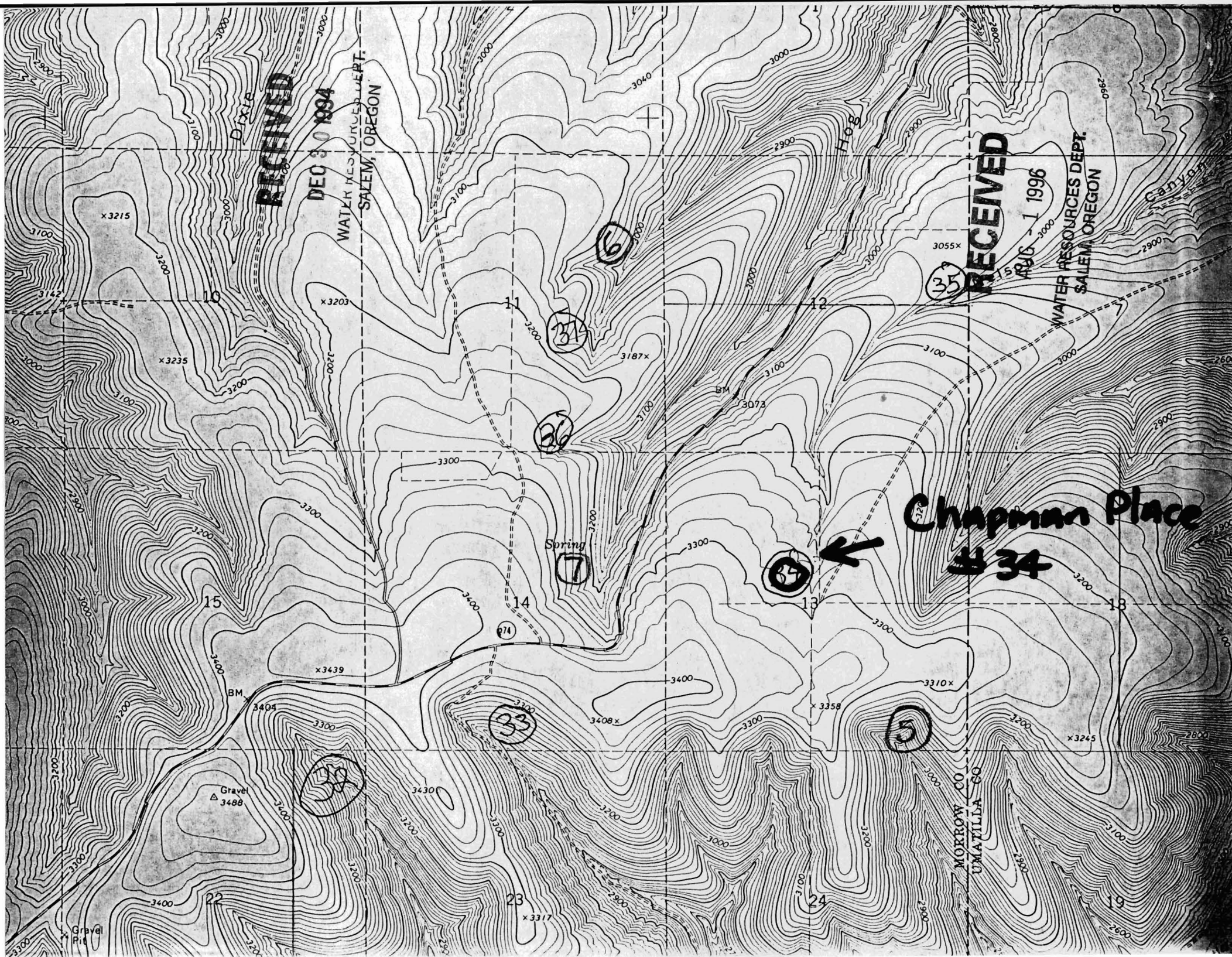
WATER RESOURCES DEPT.  
SALEM, OREGON

RECEIVED

AUG - 1 1996

WATER RESOURCES DEPT.  
SALEM, OREGON





RECEIVED

DEC 30 1994

WATER RESOURCES DEPT.  
SALEM, OREGON

RECEIVED

AUG 1 1996

WATER RESOURCES DEPT.  
SALEM, OREGON

Chapman Place



34

Dixie

Hog

Canyon

Gravel  
Pit

Spring

MORROW CO  
UMATILLA CO

3215

3203

3235

3187x

3055x

3439

3404

3408x

3400

3310x

3245

3488

3317

3100

2600

15

14

13

18

22

23

24

19

11

12

17

35

5

26

34

35

6

3000

3040

3000

2900

2960

3000

3000

2900

2900

2900

3100

3100

3000

2000

2000

3000

2900

3100

3200

3200

3100

3100

3100

3000

2900

3200

3300

3300

3100

3073

3100

3000

2900

3100

3200

3200

3100

3100

3100

3000

2900

3200

3300

3300

3100

3073

3100

3000

2900

3200

3300

3300

3100

3100

3100

3000

2900

3200

3300

3300

3100

3100

3100

3000

2900

3200

3300

3300

3100

3100

3100

3000

2900

3200

3300

3300

3100

3100

3100

3000

2900

3200

3300

3300

3100

3100

3100

3000

2900

3200

3300

3300

3100

3100

3100

3000

2900

3200

3300

3300

3100

3100

3100

3000

2900

3200

3300

3300

3100

3100

3100

3000

2900

3200

3300

3300

3100

3100

3100

3000

2900

3200

3300

3300

3100

3100

3100

3000

2900

RECEIVED

DEC 30 1994

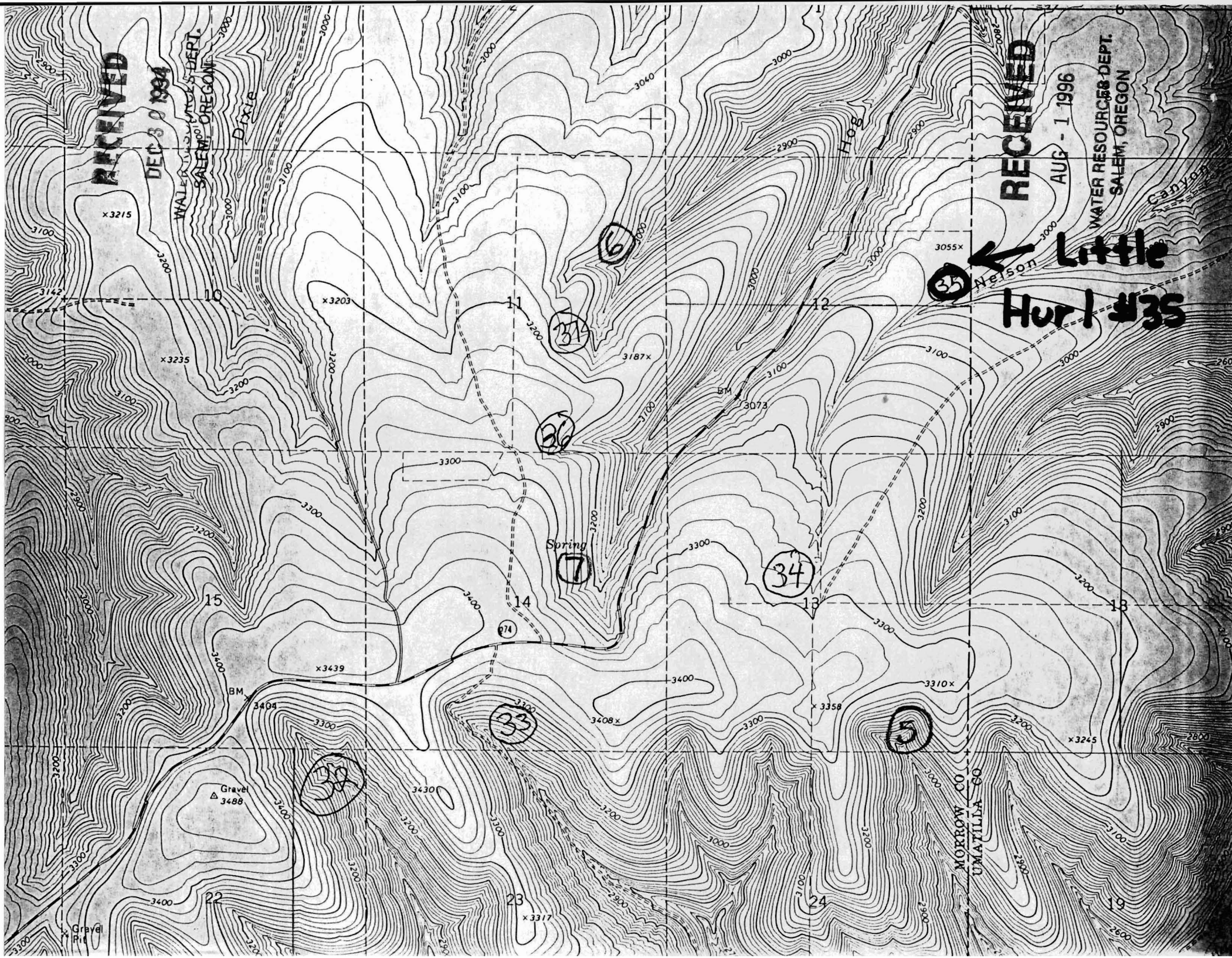
WATER RESOURCES DEPT.  
SALEM, OREGON

RECEIVED

AUG - 1 1996

WATER RESOURCES DEPT.  
SALEM, OREGON

← Nelson  
**Little  
Hur #35**



x 3215

x 3235

x 3203

x 3439

15

14

22

23

36

34

36

37

33

38

34

35

35

+

Hog

Spring

Gravel  
3488

Gravel  
Pit

MORROW CO  
UMATILLA CO

19

2600

CANYON

3055x

3187x

BM

3073

3310x

x 3358

x 3245

24

x 3317

3300

3300

3400

3408x

3430

3000

3100

3200

3000

3200

3200

3000

3000

3100

3000

12

13

11

10

3100

3200

3000

3300

3200

3400

3100

3400

3200

3000

3000

3000

3000

3040

3000

2900

2800

3000

3000

2600

2900

3000

3100

3200

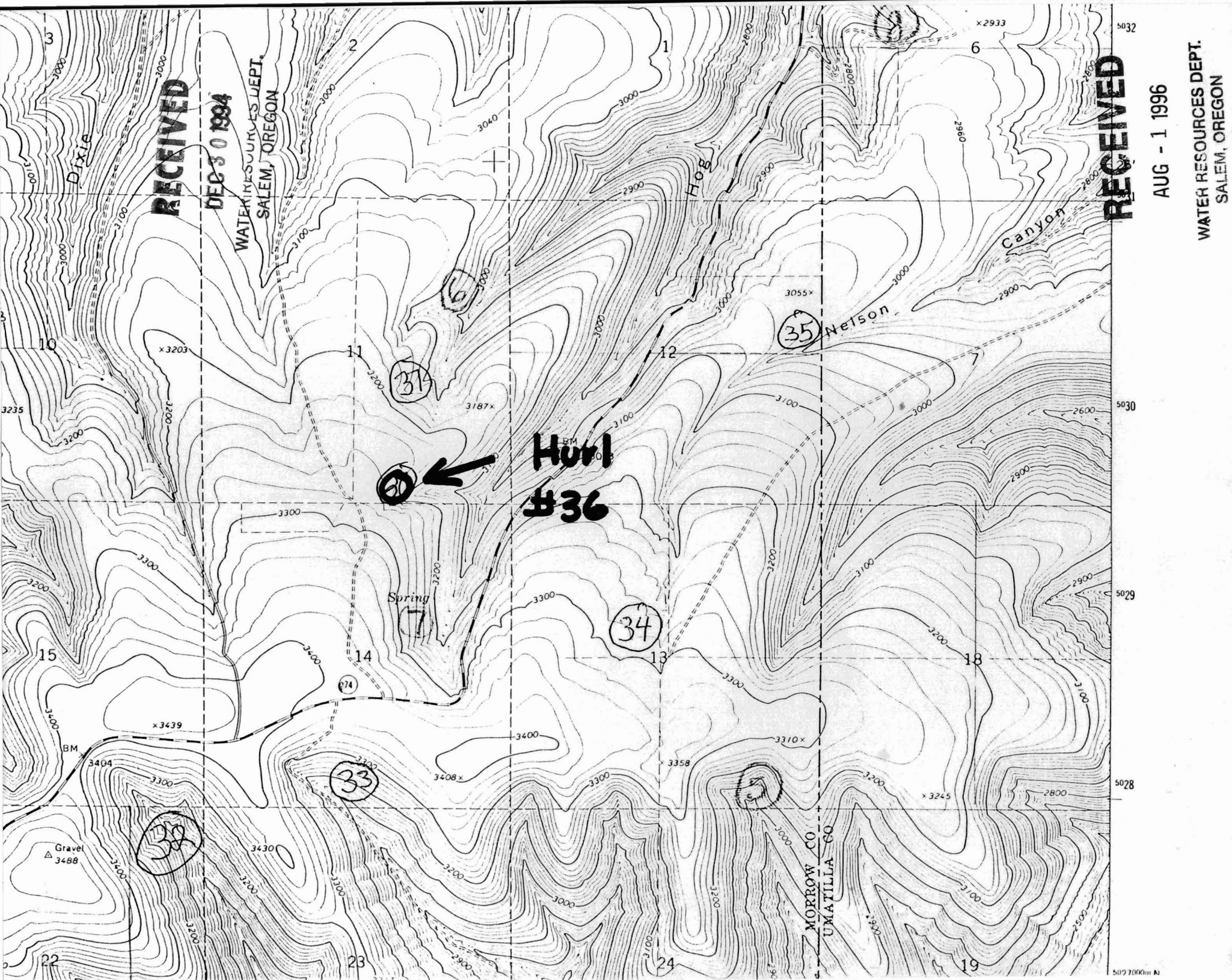
3100

2800

Dixie

Nelson





RECEIVED

DEC 30 1994

WATER RESOURCES DEPT.  
SALEM, OREGON

RECEIVED

AUG - 1 1996

WATER RESOURCES DEPT.  
SALEM, OREGON

Hurl  
#36



30

31

34

35

32

33

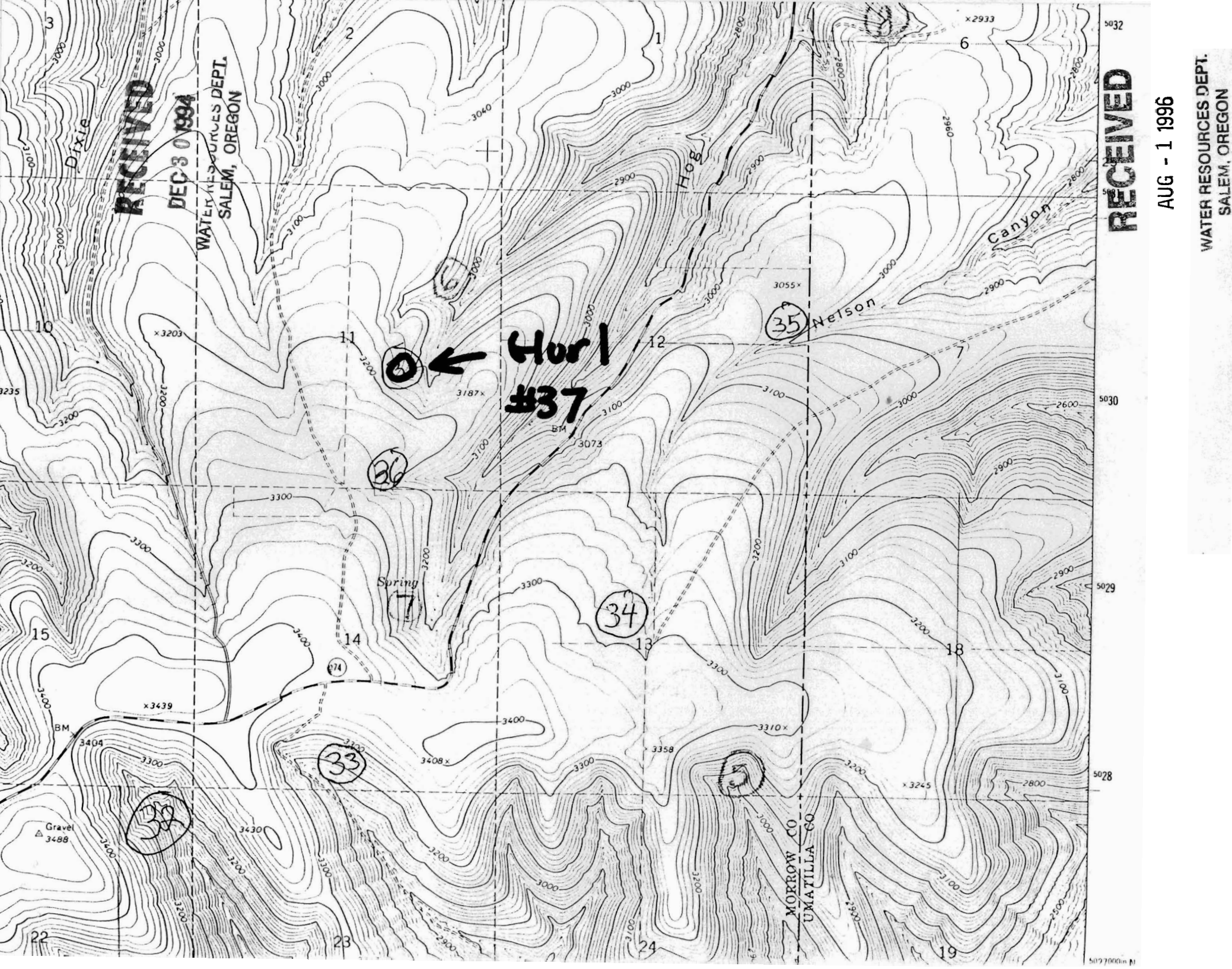
38

22

23

24

19



RECEIVED

DEC 30 1994

WATER RESOURCES DEPT.  
SALEM, OREGON

Hurl  
#37

RECEIVED

AUG - 1 1996

WATER RESOURCES DEPT.  
SALEM, OREGON

5032  
5030  
5029  
5028  
5077000 in N

Dixie

Hog

Canyon

Nelson

MORROW CO  
UMATILLA CO

Spring

Gravel  
3488

38

33

34

35

36

37

10

15

22

23

24

12

13

19

11

14

19

x2933

x3203

x3439

3187x

3073

3055x

3272

3408x

3358

3310x

x3245

5032  
5030  
5029  
5028  
5077000 in N