

**RECEIVED**

DEC 30 1994

WATER RESOURCES DEPT.  
SALEM, OREGON

**RECEIVED**

AUG - 1 1996

WATER RESOURCES DEPT.  
SALEM, OREGON

Hollow

Spring

Creek

Ely

Creek

Buckhorn

**Egg Barns #15**

Gurdane Cem

Gurdane

Grave

Springs

14

15

12

11

5

6

8

9

17

10

16

20

21

22

29

28

27

32

33

Borrow Pit

Cares

396

399

378

3755

3855

3625

3810

3990

3821

4043

3700

3733

3666

3845

3985

3895

3965

3903

3565

3585

3727

3931

4128

3335

3559

3725

4001

4005

3999

3690

3700

3710

3720

3730

3740

3750

3760

3770

3780

3790

3800

3810

3820

3830

3840

3850

3860

3870

3880

3890

3900

3910

3920

3930

3940

3950

3960

3970

3980

3990

4000

4010

4020

4030

4040

4050

4060

4070

4080

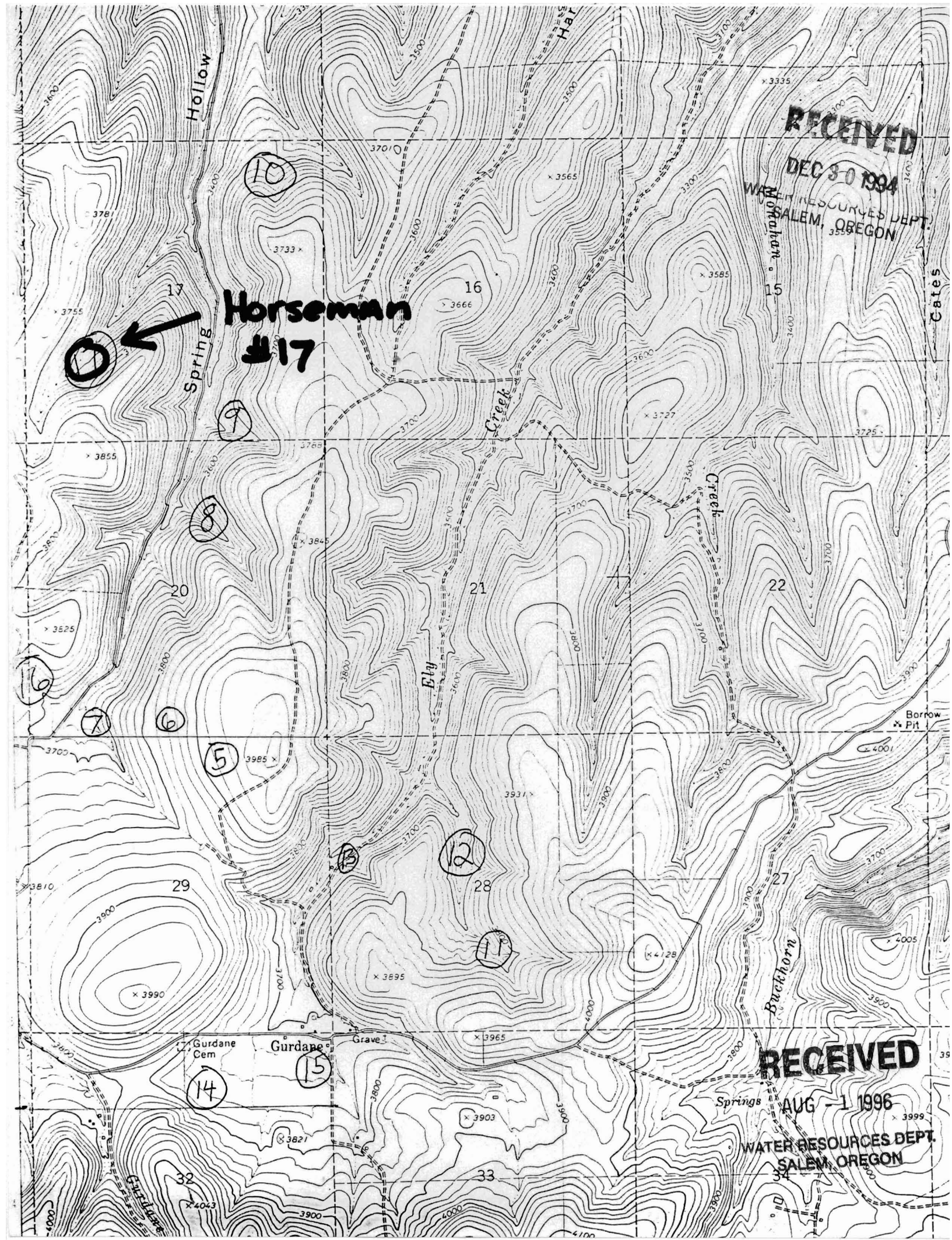
4090

4100









RECEIVED

DEC 30 1994

WATER RESOURCES DEPT.  
SALEM, OREGON

Horseman  
17

0

10  
17  
18  
19  
20  
21  
22  
23  
24  
25  
26  
27  
28  
29  
30  
31  
32  
33

Hollow  
Spring

Ely  
Creek

Creek

Buckhorn

Gurdane  
Cem

Gurdane

Grave 1

Springs

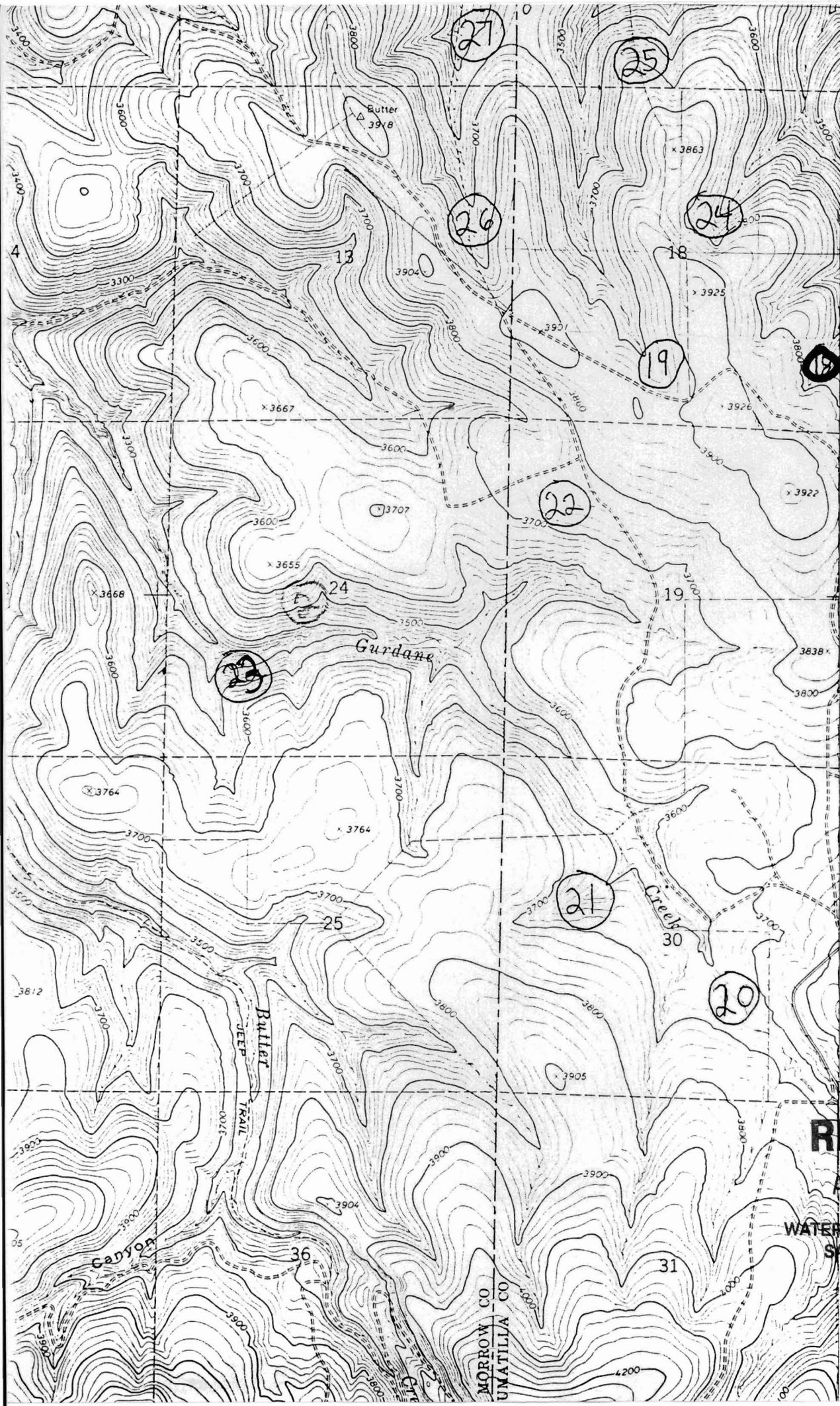
RECEIVED

AUG -1 1996

WATER RESOURCES DEPT.  
SALEM, OREGON

Cates

Borrow  
Pit



5020  
(GURDANE) 2174 I SE  
5019  
5018  
17'30"  
5017  
5016  
5015  
5014

**RECEIVED**

DEC 30 1994

WATER RESOURCES DEPT.  
SALEM, OREGON



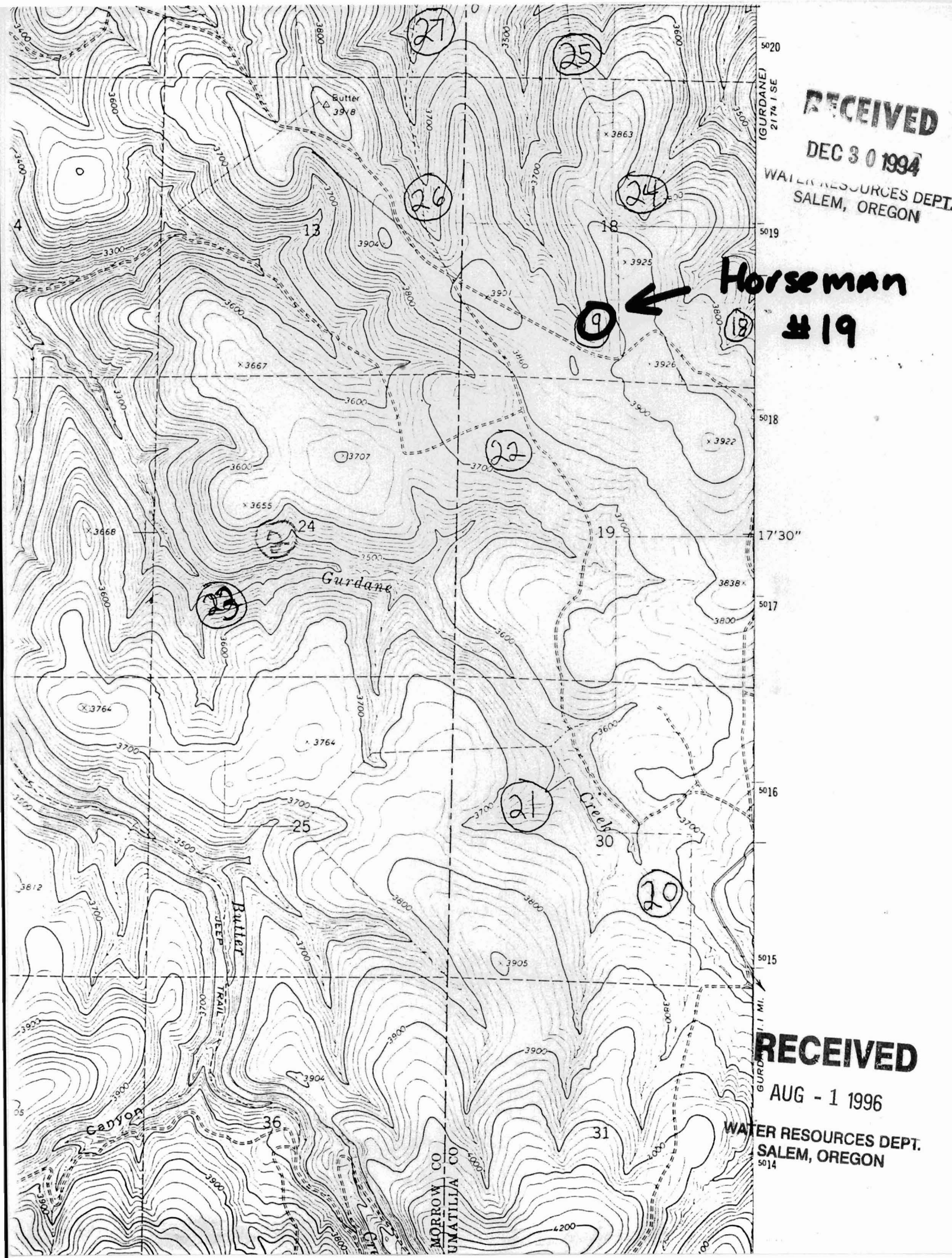
**Horseman  
# 18**

**RECEIVED**

AUG - 1 1996

WATER RESOURCES DEPT.  
SALEM, OREGON





RECEIVED

DEC 30 1994

WATER RESOURCES DEPT.  
SALEM, OREGON

**Horseman  
#19**

5020  
5019  
5018  
5017  
5016  
5015  
5014

RECEIVED

AUG - 1 1996

WATER RESOURCES DEPT.  
SALEM, OREGON

27

25

26

24

9

18

22

24

23

19

21

20

25

36

31

Gurdane

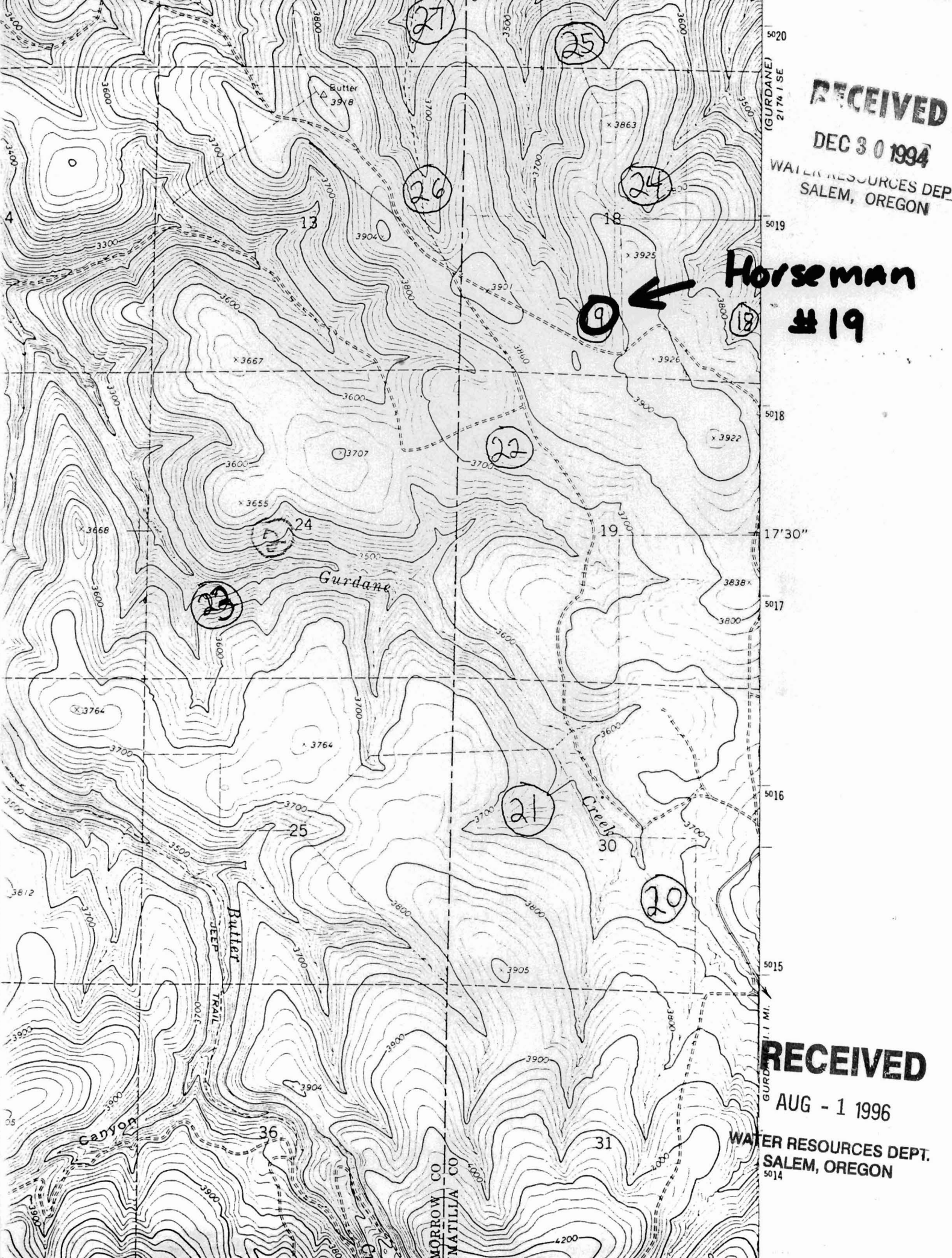
Creek

Butler  
DEEP  
TRAIL

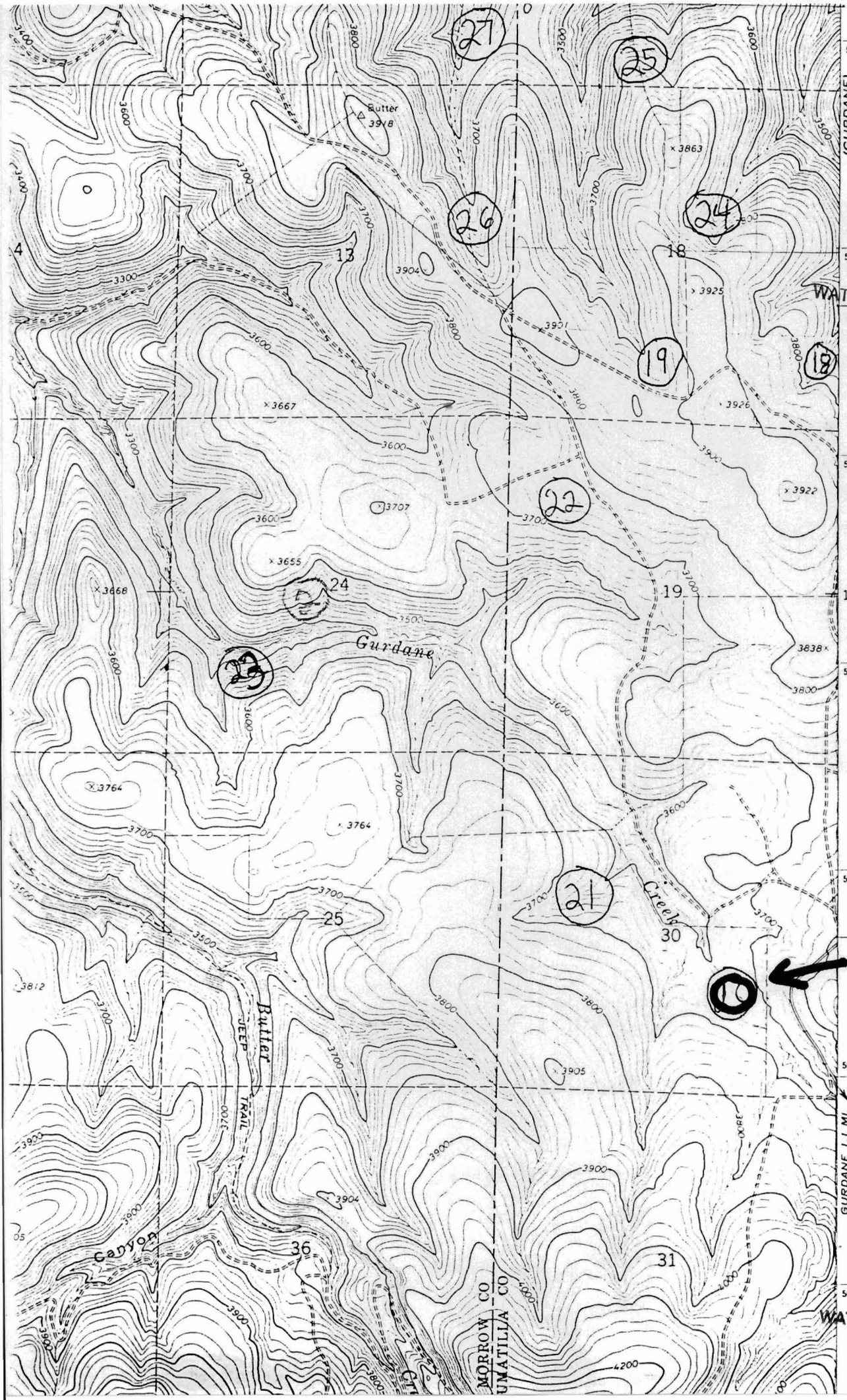
Canyon

MORROW CO  
UMATILLA CO

1.1 MI.







5020  
2174 1 SE  
5018  
17'30"  
5017  
5016  
5015  
5014  
GURDANE 1.1 MI.

**RECEIVED**

**DEC 30 1994**

WATER RESOURCES DEPT.  
SALEM, OREGON

**RECEIVED**

**AUG - 1 1996**

WATER RESOURCES DEPT.  
SALEM, OREGON

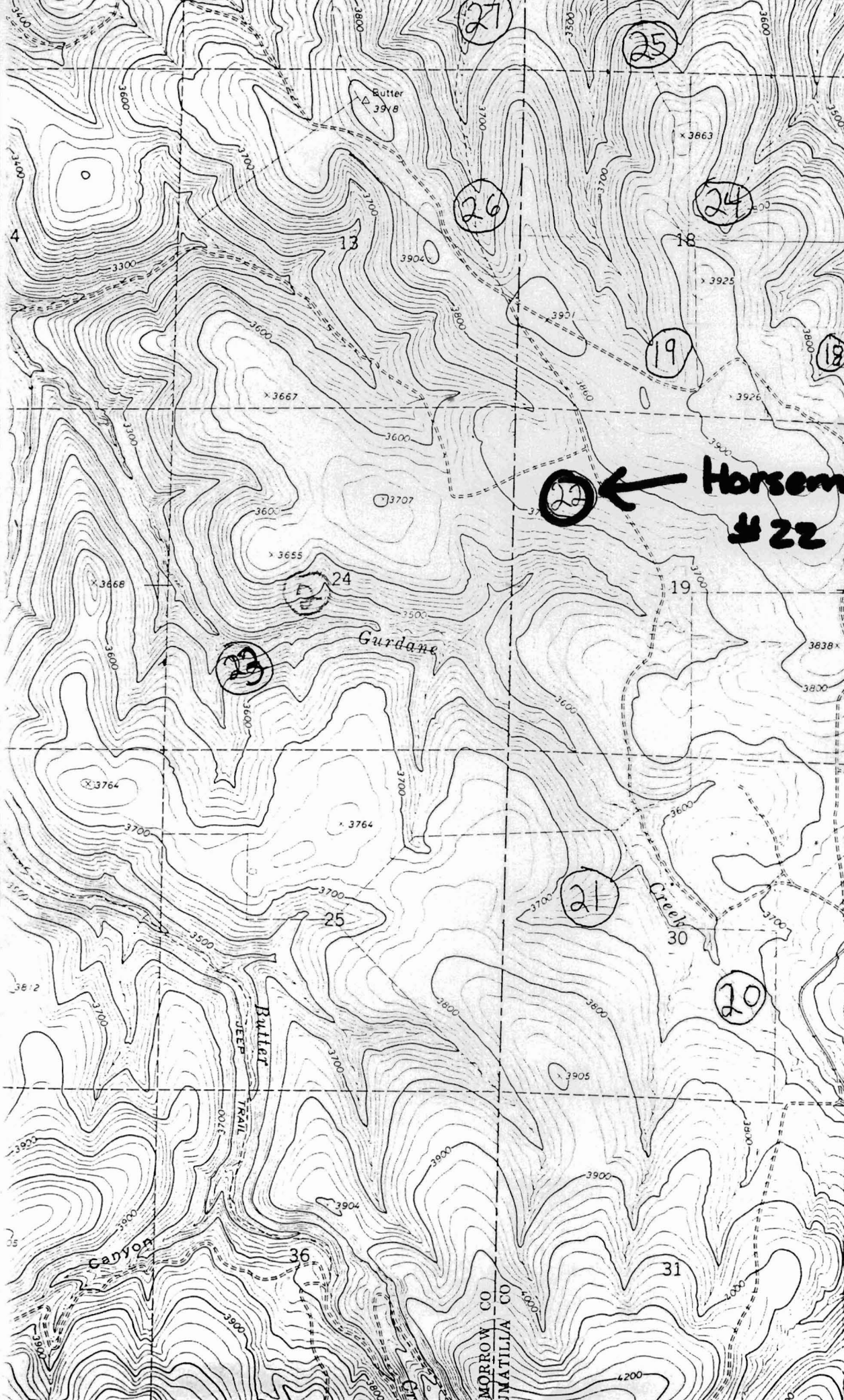
**Horseman #20**











**RECEIVED**

DEC 30 1994

WATER RESOURCES DEPT.  
SALEM, OREGON

**Horseman  
#22**

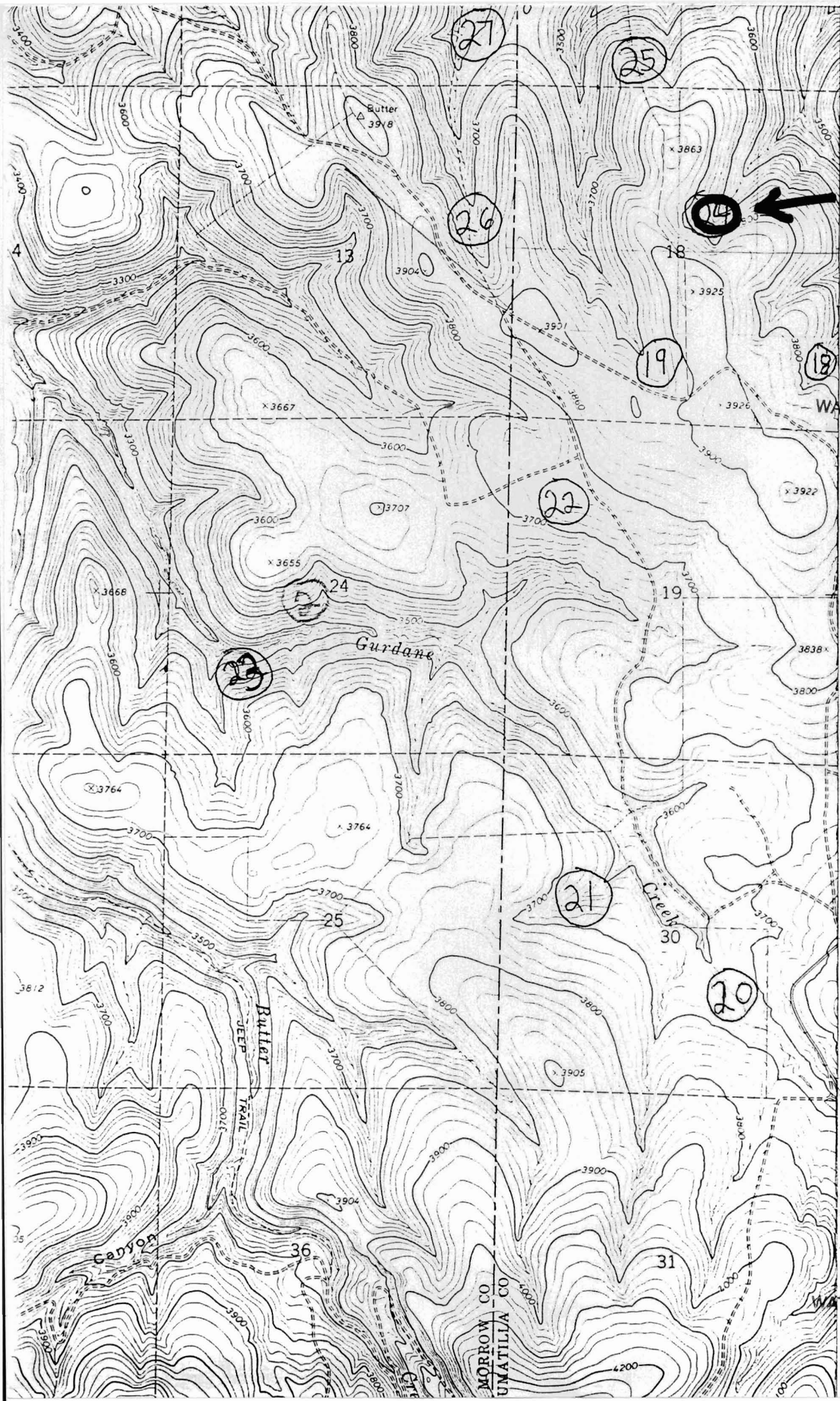
**RECEIVED**

AUG - 1 1996

WATER RESOURCES DEPT.  
SALEM, OREGON

5020  
5019  
5018  
17'30"  
5017  
5016  
5015  
5014  
GURDANE 1.1 MI.

MORROW CO  
UMATILLA CO



5020  
(GURDANE) 2174 I SE  
5019  
5018  
17'30"  
5017  
5016  
5015  
GURDANE 1.1 MI.

**Sheepcamp  
#24**

**RECEIVED**

**DEC 30 1994**

WATER RESOURCES DEPT.  
**SALEM, OREGON**

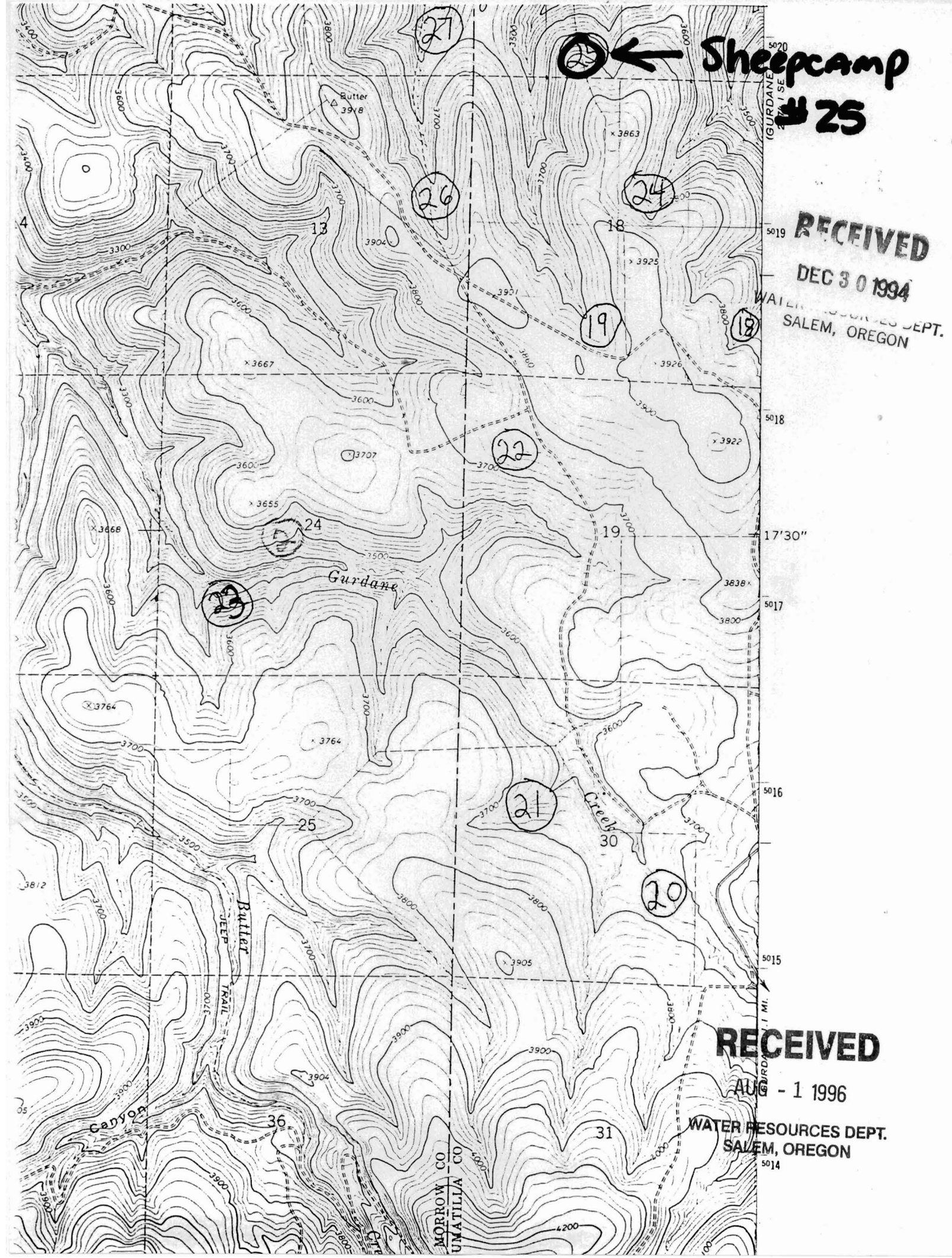
**RECEIVED**

**AUG - 1 1996**

WATER RESOURCES DEPT.  
**SALEM, OREGON**

MORROW CO  
UMATILLA CO





Sheepcamp  
#25

RECEIVED

DEC 30 1994

WATER RESOURCES DEPT.  
SALEM, OREGON

RECEIVED

AUG - 1 1996

WATER RESOURCES DEPT.  
SALEM, OREGON

27

26

24

19

18

22

24

19

21

20

25

30

36

31

Butter  
3948

Gurdane

Butter  
JEEP  
TRAIL

Creek

Canyon

MORROW CO  
UMATILLA CO

GURDANE  
4 1/2 SE

5019

5018

5017

5016

5015

5014

5013

5012

5011

5010

5009

5008

5007

5006

5005

5004

5003

4

38/2

05

5020

5019

5018

5017

5016

5015

5014

5013

5012

5011

5010

5009

5008

5007

5006

5005

5004

5003

5021

5020

5019

5018

5017

5016

5015

5014

5013

5012

5011

5010

5009

5008

5007

5006

5005

5004

5003

5002

5001

5000

4999

4998

4997

4996

4995

4994

4993

4992

4991

4990

4989

4988

4987

4986

4985

4984

4983

4982

4981

4980

4979

4978

4977

4976

4975

4974

4973

4972

4971

4970

4969

4968

4967

4966

4965

4964

4963

4962

4961

4960

4959

4958

4957

4956

4955

4954

4953

4952

4951

4950

4949

4948

4947

4946

4945

4944

4943

4942

4941

4940

4939

4938

4937

4936

4935

4934

4933

4932

4931

4930

4929

4928

4927

4926

4925

4924

4923

4922

4921

4920

4919

4918

4917

4916

4915

4914

4913

4912

4911

4910

4909

4908

4907

4906

4905

4904

4903

4902

4901

4900

4899

4898

4897

4896

4895

4894

4893

4892

4891

4890

4889

4888

4887

4886

4885

4884

4883

4882

4881

4880

4879

4878

4877

4876

4875

4874

4873

4872

4871

4870

4869

4868

4867

4866

4865

4864

4863

4862

4861

4860

4859

4858

4857

4856

4855

4854

4853

4852

4851

4850

4849

4848

4847

4846

4845

4844

4843

4842

4841

4840

4839

4838

4837

4836

4835

4834

4833

4832

4831

4830

4829

4828

4827

4826

4825

4824

4823

4822

4821

4820

4819

4818

4817

4816

4815

4814

4813

4812

4811

4810

4809

4808

4807

4806

4805

4804

4803

4802

4801

4800

4799

4798

4797

4796

4795

4794

4793

4792

4791

4790

4789

4788

4787

4786

4785

4784

4783

4782

4781

4780</