

POND LISTING

#	STORAGE-AF	AREA	DEPTH	#	STORAGE-AF	AREA	DEPTH
#1	.03	.01	3	#7	.0045	.0045	1
#2	.014	.007	2	#8	.0045	.0045	1
#3	.06	.02	3	#9	.021	.007	3
#4	.04	.01	4	#10	.027	.009	3
#5	.0045	.0045	1	#11	.021	.007	3
#6	.0045	.0045	1	#12	.014	.007	2

REGISTERED PROFESSIONAL ENGINEER 4149
 BUILT MAY 18, 1982
 CHARLES R. TOPPING

CHARLES TOPPING ENGINEERING
 10245 NE CLEMENS DR
 475-3775
 MADRAS, OR 97741

POND MAP

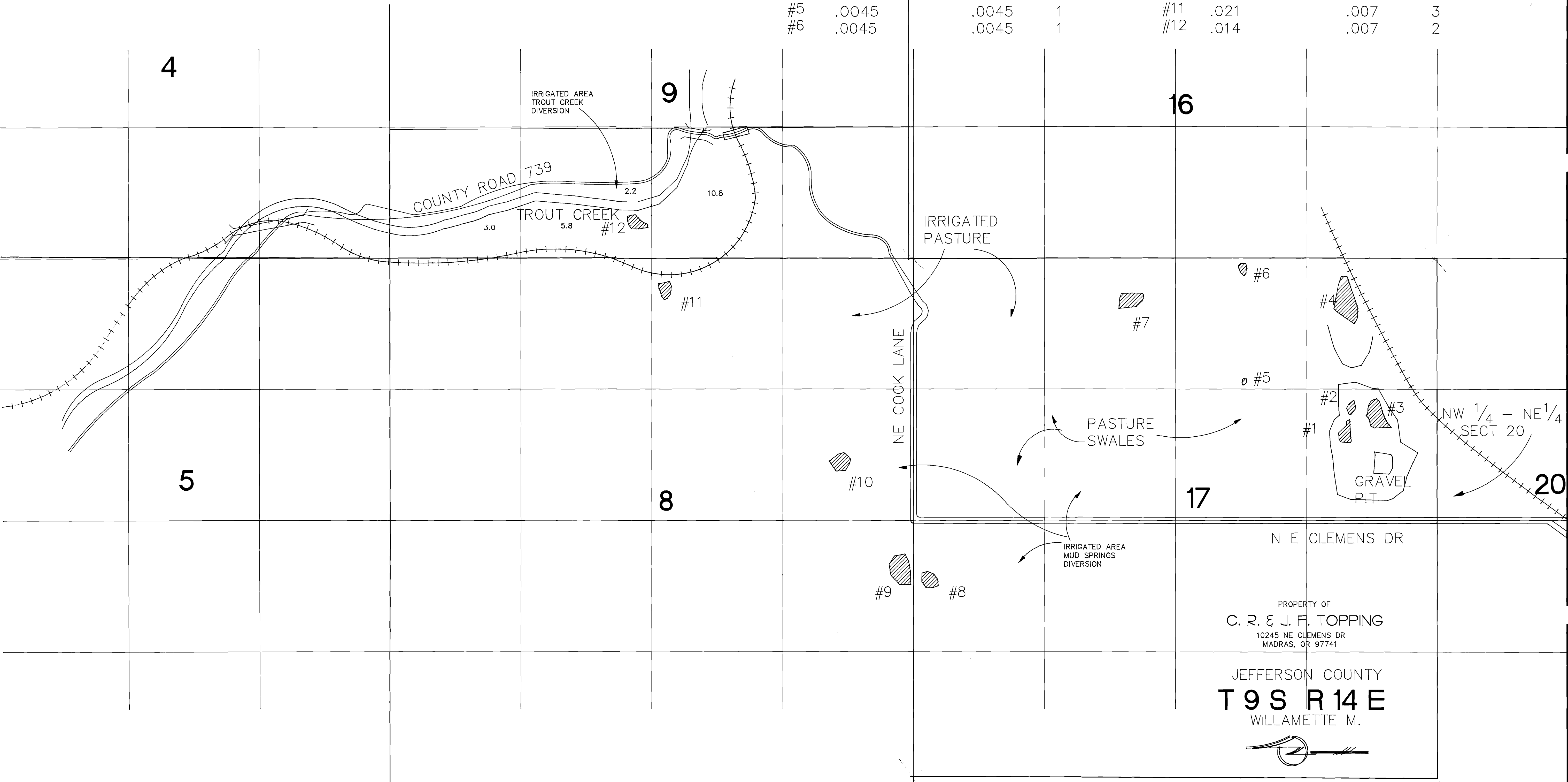
TOPPING FARM

MADRAS, OR 97741

POND SCHEMATIC

MS-POND-1 24-DECEMBER 2004
 DO NOT SCALE-CALL ENGINEER

SHEET 1 OF ONE



APPROXIMATE DRAWING SCALE
 1" = 500'
 DRAWING TO BE CONSIDERED
 AS A SCHEMATIC

RECEIVED
 JUL 9 0 1996
 WATER RESOURCES DEPT.
 SALEM OREGON

No Final Proof Map available

No Permit Map available