

RECEIVED

AUG 14 1996

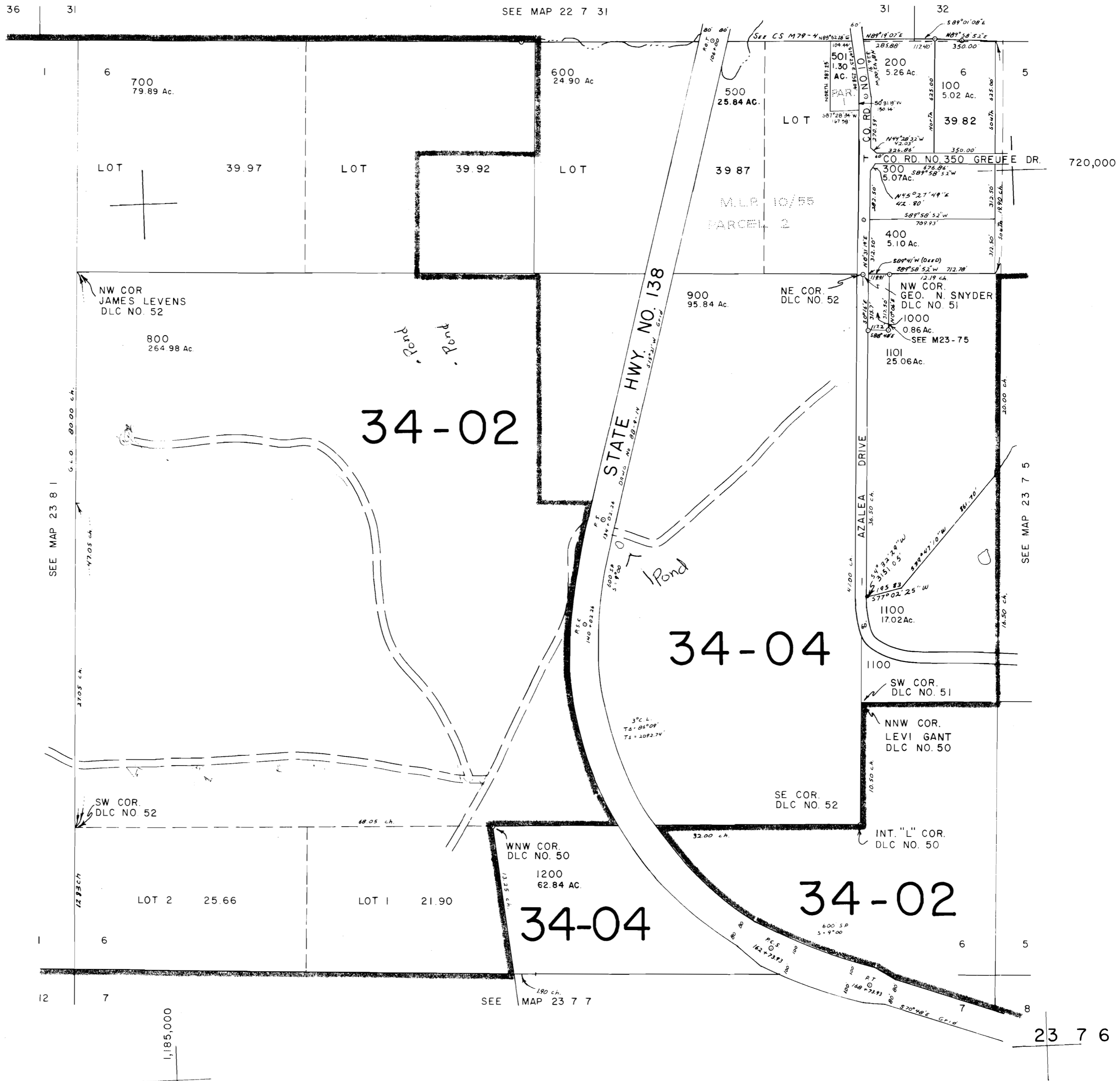
WATER RESOURCES DEPT.
SALEM, OREGON

THIS MAP WAS PREPARED FOR
ASSESSMENT PURPOSE ONLY.

SECTION 6 T.23S. R.7W. W.M.
DOUGLAS COUNTY

23 7 6

1" = 400'



23 7 6

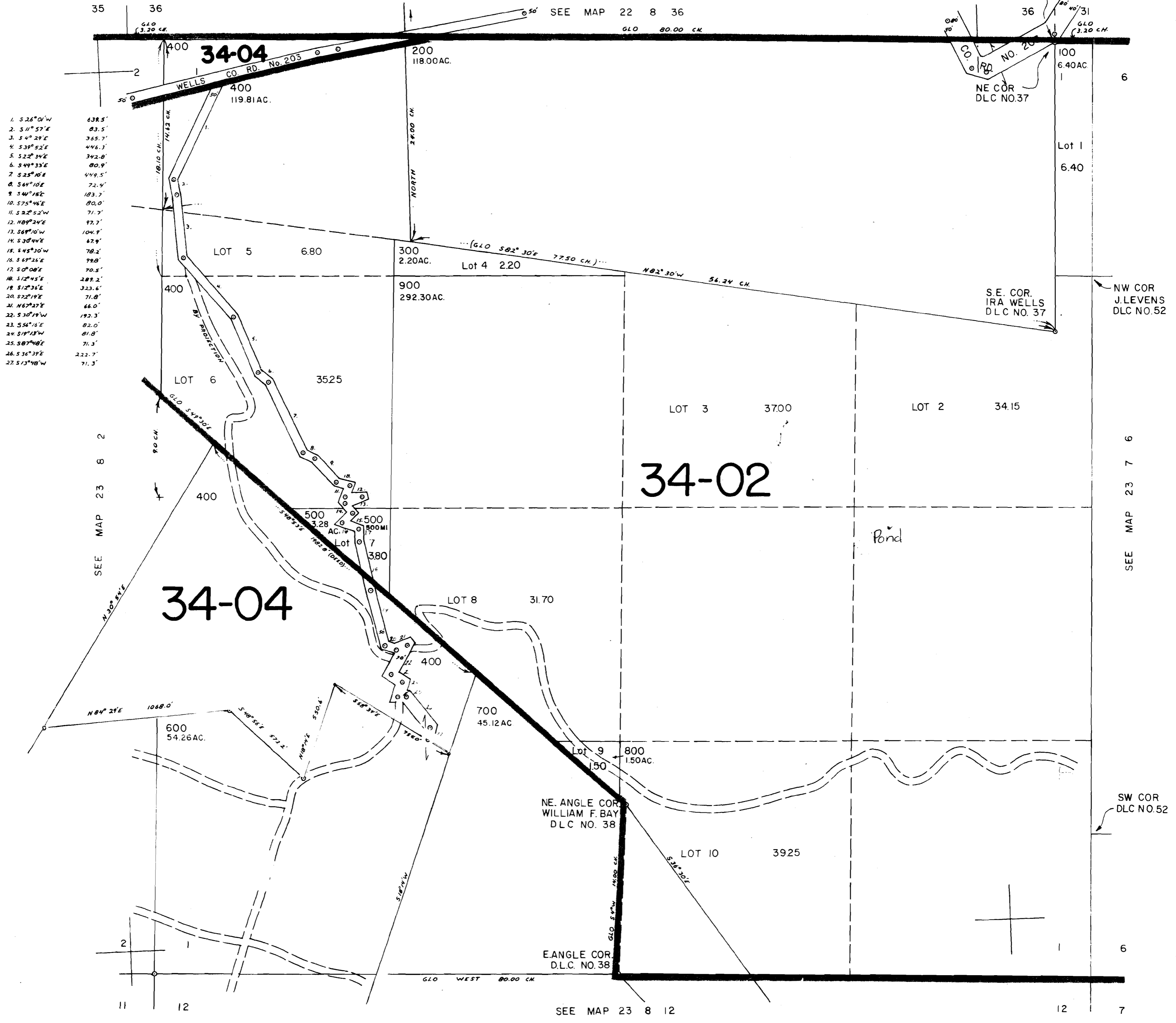
AUG 14 1996

WATER RESOURCES DEPT.
SALEM, OREGON

THIS MAP WAS PREPARED FOR
ASSESSMENT PURPOSE ONLY.

SECTION 1 T.23 S. R. 8 W. W.M.
DOUGLAS COUNTY

1"=400'



- 1. S 26° 01' W 638.5'
- 2. S 11° 57' E 83.5'
- 3. S 4° 29' E 365.7'
- 4. S 39° 52' E 446.3'
- 5. S 22° 34' E 342.8'
- 6. S 49° 33' E 80.9'
- 7. S 25° 10' E 449.5'
- 8. S 64° 10' E 72.4'
- 9. S 40° 15' E 183.7'
- 10. S 75° 46' E 80.0'
- 11. S 22° 52' W 71.7'
- 12. N 89° 24' E 97.7'
- 13. S 69° 10' W 104.8'
- 14. S 38° 44' E 67.9'
- 15. S 45° 10' W 78.2'
- 16. S 69° 26' E 98.8'
- 17. S 0° 08' E 78.5'
- 18. S 12° 45' E 289.2'
- 19. S 12° 36' E 323.6'
- 20. S 22° 19' E 71.8'
- 21. N 67° 27' E 66.0'
- 22. S 30° 19' W 192.3'
- 23. S 54° 16' E 82.0'
- 24. S 19° 18' W 81.8'
- 25. S 87° 48' E 71.3'
- 26. S 36° 39' E 222.7'
- 27. S 13° 48' W 71.3'

183,000

No Final Proof Map available

No Permit Map available